

KANSAS CORPORATION COMMISSION
OIL & GAS CONSERVATION DIVISION

TEMPORARY ABANDONMENT WELL APPLICATION

All blanks must be complete

OPERATOR: License# _____
Name: _____
Address 1: _____
Address 2: _____
City: _____ State: _____ Zip: _____ + _____
Contact Person: _____
Phone:(_____) _____
Contact Person Email: _____
Field Contact Person: _____
Field Contact Person Phone: (_____) _____

API No. 15- _____
Spot Description: _____
____ - ____ - ____ - ____ Sec. _____ Twp. _____ S. R. _____ E W
_____ feet from N / S Line of Section
_____ feet from E / W Line of Section
GPS Location: Lat: _____, Long: _____
(e.g. xx.xxxxx) (e.g. -xxx.xxxxx)
Datum: NAD27 NAD83 WGS84
County: _____ Elevation: _____ GL KB
Lease Name: _____ Well #: _____
Well Type: (check one) Oil Gas OG WSW Other: _____
 SWD Permit #: _____ ENHR Permit #: _____
 Gas Storage Permit #: _____
Spud Date: _____ Date Shut-In: _____

	Conductor	Surface	Production	Intermediate	Liner	Tubing
Size						
Setting Depth						
Amount of Cement						
Top of Cement						
Bottom of Cement						

Casing Fluid Level from Surface: _____ How Determined? _____ Date: _____
Casing Squeeze(s): _____ to _____ w / _____ sacks of cement, _____ to _____ w / _____ sacks of cement. Date: _____
(top) (bottom) (top) (bottom)
Do you have a valid Oil & Gas Lease? Yes No
Depth and Type: Junk in Hole at _____ (depth) Tools in Hole at _____ (depth) Casing Leaks: Yes No Depth of casing leak(s): _____
Type Completion: ALT. I ALT. II Depth of: DV Tool: _____ w / _____ sacks of cement Port Collar: _____ w / _____ sack of cement
(depth) (depth)
Packer Type: _____ Size: _____ Inch Set at: _____ Feet
Total Depth: _____ Plug Back Depth: _____ Plug Back Method: _____

Geological Data:

Formation Name	Formation Top	Formation Base	Completion Information
1. _____	At: _____	to _____ Feet	Perforation Interval _____ to _____ Feet or Open Hole Interval _____ to _____ Feet
2. _____	At: _____	to _____ Feet	Perforation Interval _____ to _____ Feet or Open Hole Interval _____ to _____ Feet

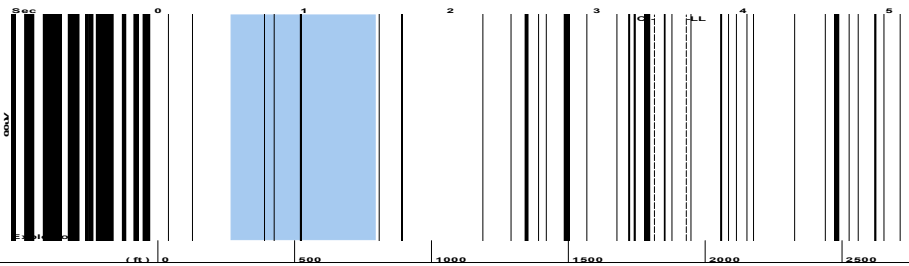
UNDER PENALTY OF PERJURY I HEREBY ATTEST THAT THE INFORMATION CONTAINED HEREIN IS TRUE AND CORRECT TO THE BEST OF MY KNOWLEDGE

Submitted Electronically

Do NOT Write in This Space - KCC USE ONLY	Date Tested: _____	Results: _____	Date Plugged: _____	Date Repaired: _____	Date Put Back in Service: _____
	Review Completed by: _____ Comments: _____				
TA Approved: <input type="checkbox"/> Yes <input type="checkbox"/> Denied Date: _____					

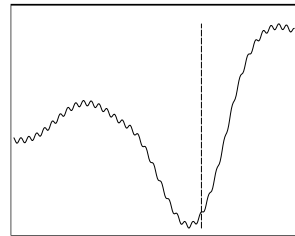
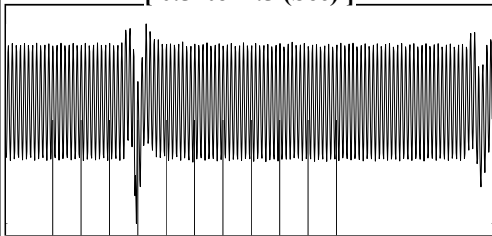
Mail to the Appropriate KCC Conservation Office:

	KCC District Office #1 - 210 E. Frontview, Suite A, Dodge City, KS 67801	Phone 620.682.7933
	KCC District Office #2 - 3450 N. Rock Road, Building 600, Suite 601, Wichita, KS 67226	Phone 316.337.7400
	KCC District Office #3 - 137 E. 21st St., Chanute, KS 66720	Phone 620.902.6450
	KCC District Office #4 - 2301 E. 13th Street, Hays, KS 67601-2651	Phone 785.261.6250



Filter Type High Pass Automatic Collar Count Yes Time 3.614 sec
 Manual Acoustic Veloc 1087.48 ft/s Manual JTS/sec 17.1527 Joints 60.9101 Jts
 Depth 1930.85 ft

[0.5 to 1.5 (Sec)]

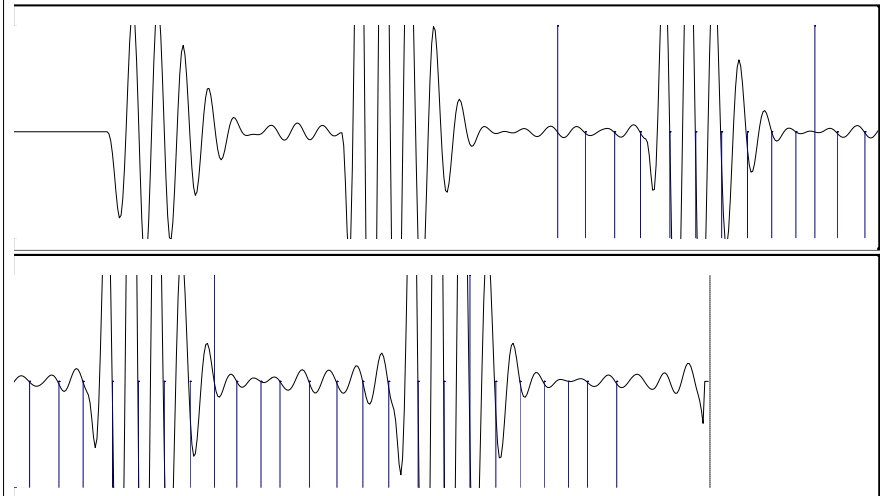


Analysis Method: Automatic

NO PRESSURE DATA AVAILABLE

Change in Pressure 0.01 psi PT12098
 Range 0 - ? psi
 Change in Time 1.75 min

Production	Potential	Casing Pressure	Producing
Current			
Oil - * -	- * - BBL/D	-7.2 psi (g)	
Water - * -	- * - BBL/D	Casing Pressure Buildup	
Gas - * -	- * - Mscf/D	0.006 psi	
		1.75 min	
IPR Method	Vogel	Gas/Liquid Interface Pressure	Annular Gas Flow
PBHP/SBHP	- * -	- * - psi (g)	- * - Mscf/D
Production Efficiency	0.0		% Liquid
			100 %
Oil 40 deg.API		Liquid Level Depth	
Water 1.05 Sp.Gr.H2O		1930.85 ft	
Gas 0.91 Sp.Gr.AIR		Pump Intake Depth	
		- * - ft	
Acoustic Velocity 1068.54 ft/s		Formation Depth	
		3272.00 ft	
Formation Submergence			
Total Gaseous Liquid Column HT (TVD)	- * - ft	Pump Intake	
Equivalent Gas Free Liquid HT (TVD)	- * - ft	- * - psi (g)	
Acoustic Test		Producing BHP	
		- * - psi (g)	
		Static BHP	
		- * - psi (g)	



Acoustic Velocity	1068.54 ft/s	Joints counted	36
Joints Per Second	16.8539 jts/sec	Joints to liquid level	60.9101
Depth to liquid level	1930.85 ft	Filter Width	15.1527 19.1527
Automatic Collar Count	Yes	Time to 1st Collar	1.26 3.396

Conservation Division
District Office No. 4
2301 E. 13th Street
Hays, KS 67601-2651



Phone: 785-261-6250
<http://kcc.ks.gov/>

Andrew J. French, Chairperson
Dwight D. Keen, Commissioner
Annie Kuether, Commissioner

Laura Kelly, Governor

05/09/2024

Octavio Morales
American Warrior, Inc.
PO BOX 399
GARDEN CITY, KS 67846-0399

Re: Temporary Abandonment
API 15-167-21002-00-00
FIRST NAT L BANK OF TOPEKA 2
SW/4 Sec.19-13S-14W
Russell County, Kansas

Dear Octavio Morales:

"Your temporary abandonment (TA) application for the well listed above has been approved. In accordance with K.A.R. 82-3-111 the TA status of this well will expire 05/09/2025.

- * If you return this well to service or plug it, please notify the District Office.
- * If you sell this well you are required to file a Transfer of Operator form, T-1.
- * If the well will remain temporarily abandoned, you must submit a new TA application, CP-111, before 05/09/2025.

You may contact me at the number above if you have questions.

Very truly yours,

RICHARD WILLIAMS"