

KANSAS CORPORATION COMMISSION
OIL & GAS CONSERVATION DIVISION

TEMPORARY ABANDONMENT WELL APPLICATION

OPERATOR: License# \_\_\_\_\_
Name: \_\_\_\_\_
Address 1: \_\_\_\_\_
Address 2: \_\_\_\_\_
City: \_\_\_\_\_ State: \_\_\_\_\_ Zip: \_\_\_\_\_ + \_\_\_\_\_
Contact Person: \_\_\_\_\_
Phone:( \_\_\_\_\_ ) \_\_\_\_\_
Contact Person Email: \_\_\_\_\_
Field Contact Person: \_\_\_\_\_
Field Contact Person Phone: ( \_\_\_\_\_ ) \_\_\_\_\_

API No. 15- \_\_\_\_\_
Spot Description: \_\_\_\_\_
Sec. \_\_\_\_\_ Twp. \_\_\_\_\_ S. R. \_\_\_\_\_ E \_\_\_\_\_ W \_\_\_\_\_
feet from \_\_\_\_\_ N / \_\_\_\_\_ S Line of Section
feet from \_\_\_\_\_ E / \_\_\_\_\_ W Line of Section
GPS Location: Lat: \_\_\_\_\_, Long: \_\_\_\_\_
Datum: \_\_\_\_\_ NAD27 \_\_\_\_\_ NAD83 \_\_\_\_\_ WGS84
County: \_\_\_\_\_ Elevation: \_\_\_\_\_ GL \_\_\_\_\_ KB
Lease Name: \_\_\_\_\_ Well #: \_\_\_\_\_
Well Type: (check one) \_\_\_\_\_ Oil \_\_\_\_\_ Gas \_\_\_\_\_ OG \_\_\_\_\_ WSW \_\_\_\_\_ Other: \_\_\_\_\_
\_\_\_\_\_ SWD Permit #: \_\_\_\_\_ ENHR Permit #: \_\_\_\_\_
\_\_\_\_\_ Gas Storage Permit #: \_\_\_\_\_
Spud Date: \_\_\_\_\_ Date Shut-In: \_\_\_\_\_

Table with 7 columns: Conductor, Surface, Production, Intermediate, Liner, Tubing. Rows include Size, Setting Depth, Amount of Cement, Top of Cement, Bottom of Cement.

Casing Fluid Level from Surface: \_\_\_\_\_ How Determined? \_\_\_\_\_ Date: \_\_\_\_\_

Casing Squeeze(s): \_\_\_\_\_ to \_\_\_\_\_ w / \_\_\_\_\_ sacks of cement, \_\_\_\_\_ to \_\_\_\_\_ w / \_\_\_\_\_ sacks of cement. Date: \_\_\_\_\_

Do you have a valid Oil & Gas Lease? \_\_\_\_\_ Yes \_\_\_\_\_ No

Depth and Type: \_\_\_\_\_ Junk in Hole at \_\_\_\_\_ Tools in Hole at \_\_\_\_\_ Casing Leaks: \_\_\_\_\_ Yes \_\_\_\_\_ No Depth of casing leak(s): \_\_\_\_\_

Type Completion: \_\_\_\_\_ ALT. I \_\_\_\_\_ ALT. II Depth of: \_\_\_\_\_ DV Tool: \_\_\_\_\_ w / \_\_\_\_\_ sacks of cement \_\_\_\_\_ Port Collar: \_\_\_\_\_ w / \_\_\_\_\_ sack of cement

Packer Type: \_\_\_\_\_ Size: \_\_\_\_\_ Inch Set at: \_\_\_\_\_ Feet

Total Depth: \_\_\_\_\_ Plug Back Depth: \_\_\_\_\_ Plug Back Method: \_\_\_\_\_

Geological Date:

Table with 4 columns: Formation Name, Formation Top, Formation Base, Completion Information. Rows 1 and 2.

UNDER PENALTY OF PERJURY I HEREBY ATTEST THAT THE INFORMATION CONTAINED HEREIN IS TRUE AND CORRECT TO THE BEST OF MY KNOWLEDGE

Submitted Electronically

Form with fields: Do NOT Write in This Space - KCC USE ONLY, Date Tested, Results, Date Plugged, Date Repaired, Date Put Back in Service, Review Completed by, Comments, TA Approved, Date.

Mail to the Appropriate KCC Conservation Office:

Table with 2 columns: Office Address, Phone. Rows for District Offices #1, #2, #3, and #4.

**Liquid Level**

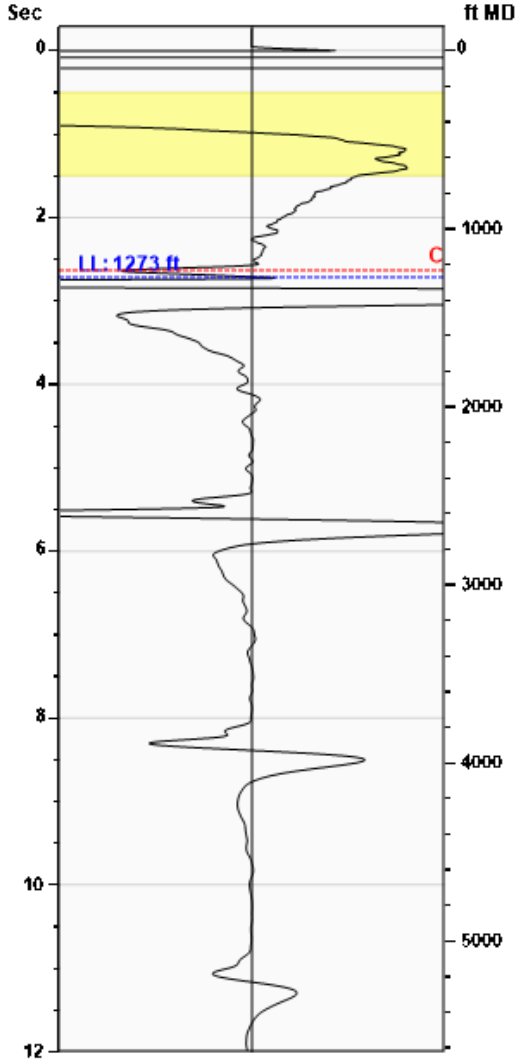
**1273 ft MD**

**Fluid Above Pump**

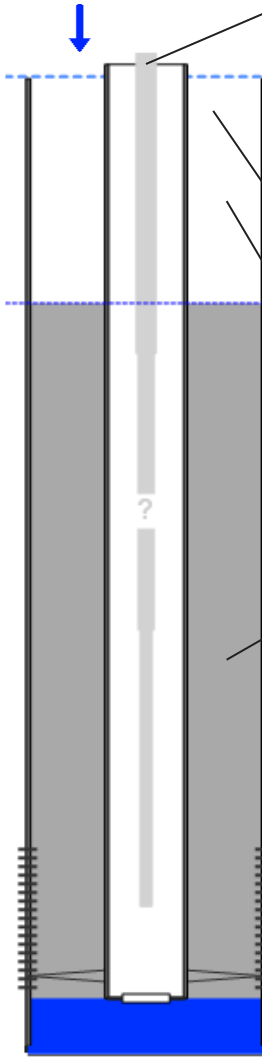
**3904 ft TVD**

**Equivalent Gas Free Above Pump**

**3904 ft TVD**



Gun - WRFG753



**Production**

|                      |          |           |        |
|----------------------|----------|-----------|--------|
| Date Entered         | 05/07/24 |           |        |
|                      | Current  | Potential |        |
| Oil                  | **       | **        | BBL/D  |
| Water                | **       | **        | BBL/D  |
| Gas                  | **       | **        | Mscf/D |
| IPR Method           | Vogel    |           |        |
| PBHP/SBHP            | -0.00    |           |        |
| Producing Efficiency | 0.00%    |           |        |

**Casing Pressure**

|          |             |
|----------|-------------|
| Pressure | 2.7 psi (g) |
|----------|-------------|

**Annular Gas Flow**

|          |            |
|----------|------------|
| Gas Flow | 0.3 Mscf/D |
|----------|------------|

**Fluid Properties**

|                     |         |
|---------------------|---------|
| % Liquid Above Pump | 100.00% |
| % Liquid Below Pump | **      |

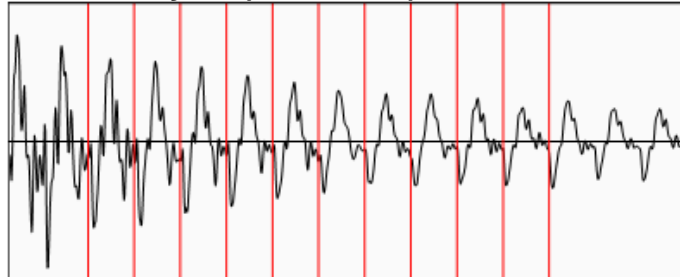
**Depths**

|                   |         |
|-------------------|---------|
| Pump Intake Depth | 5177 ft |
| Formation Depth   | 5138 ft |

**Wellbore Pressures**

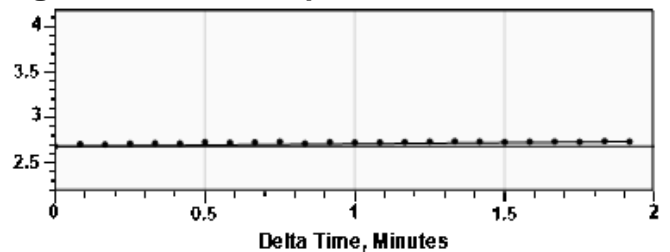
|                   |                |
|-------------------|----------------|
| PIP               | 1256.0 psi (g) |
| PBHP              | 1244.6 psi (g) |
| SBHP              | **             |
| Gas/Liq Interface | 3.5 psi (g)    |

**Collar Analysis (Automatic)**



|                           |               |
|---------------------------|---------------|
| Average Acoustic Velocity | 937 ft/s      |
| Average Joints Per Sec.   | 14.78 Jts/sec |
| Joints To Liquid          | 40.14 Jts     |

**Casing Pressure Buildup**



|  |                |
|--|----------------|
| Casing Pressure                              | 2.7 psi (g)    |
| Buildup                                      | 0.1 psi (g)    |
| Buildup Time                                 | 1 min 55 sec   |
| Gas Gravity from Collar Analysis (Automatic) | 1.0237 Air = 1 |

**Comments and Recommendations**

Echometer Company  
 5001 Ditto Lane  
 Wichita Falls, TX 76302  
 (940) 767-4334  
 info@echometer.com

Conservation Division  
District Office No. 1  
210 E. Frontview, Suite A  
Dodge City, KS 67801



Phone: 620-682-7933  
<http://kcc.ks.gov/>

Andrew J. French, Chairperson  
Dwight D. Keen, Commissioner  
Annie Kuether, Commissioner

Laura Kelly, Governor

05/14/2024

Katherine McClurkan  
Merit Energy Company, LLC  
13727 Noel Road, Suite 1200  
Dallas, TX 75240

Re: Temporary Abandonment  
API 15-081-21428-00-02  
FREY G 2  
NE/4 Sec.19-27S-33W  
Haskell County, Kansas

Dear Katherine McClurkan:

"Your temporary abandonment (TA) application for the well listed above has been approved. In accordance with K.A.R. 82-3-111 the TA status of this well will expire 05/14/2025.

- \* If you return this well to service or plug it, please notify the District Office.
- \* If you sell this well you are required to file a Transfer of Operator form, T-1.
- \* If the well will remain temporarily abandoned, you must submit a new TA application, CP-111, before 05/14/2025.

You may contact me at the number above if you have questions.

Very truly yours,

Michael Maier"