

KANSAS CORPORATION COMMISSION  
OIL & GAS CONSERVATION DIVISION

TEMPORARY ABANDONMENT WELL APPLICATION

All blanks must be complete

OPERATOR: License# \_\_\_\_\_  
 Name: \_\_\_\_\_  
 Address 1: \_\_\_\_\_  
 Address 2: \_\_\_\_\_  
 City: \_\_\_\_\_ State: \_\_\_\_\_ Zip: \_\_\_\_\_ + \_\_\_\_\_  
 Contact Person: \_\_\_\_\_  
 Phone: ( \_\_\_\_\_ ) \_\_\_\_\_  
 Contact Person Email: \_\_\_\_\_  
 Field Contact Person: \_\_\_\_\_  
 Field Contact Person Phone: ( \_\_\_\_\_ ) \_\_\_\_\_

API No. 15- \_\_\_\_\_  
 Spot Description: \_\_\_\_\_  
 \_\_\_\_\_ - \_\_\_\_\_ - \_\_\_\_\_ - \_\_\_\_\_ Sec. \_\_\_\_\_ Twp. \_\_\_\_\_ S. R. \_\_\_\_\_  E  W  
 \_\_\_\_\_ feet from  N /  S Line of Section  
 \_\_\_\_\_ feet from  E /  W Line of Section  
 GPS Location: Lat: \_\_\_\_\_, Long: \_\_\_\_\_  
(e.g. xx.xxxxx) (e.g. -xxx.xxxxx)  
 Datum:  NAD27  NAD83  WGS84  
 County: \_\_\_\_\_ Elevation: \_\_\_\_\_  GL  KB  
 Lease Name: \_\_\_\_\_ Well #: \_\_\_\_\_  
 Well Type: (check one)  Oil  Gas  OG  WSW  Other: \_\_\_\_\_  
 SWD Permit #: \_\_\_\_\_  ENHR Permit #: \_\_\_\_\_  
 Gas Storage Permit #: \_\_\_\_\_  
 Spud Date: \_\_\_\_\_ Date Shut-In: \_\_\_\_\_

	Conductor	Surface	Production	Intermediate	Liner	Tubing
Size						
Setting Depth						
Amount of Cement						
Top of Cement						
Bottom of Cement						

Casing Fluid Level from Surface: \_\_\_\_\_ How Determined? \_\_\_\_\_ Date: \_\_\_\_\_  
 Casing Squeeze(s): \_\_\_\_\_ to \_\_\_\_\_ w / \_\_\_\_\_ sacks of cement, \_\_\_\_\_ to \_\_\_\_\_ w / \_\_\_\_\_ sacks of cement. Date: \_\_\_\_\_  
(top) (bottom) (top) (bottom)  
 Do you have a valid Oil & Gas Lease?  Yes  No  
 Depth and Type:  Junk in Hole at \_\_\_\_\_  Tools in Hole at \_\_\_\_\_ Casing Leaks:  Yes  No Depth of casing leak(s): \_\_\_\_\_  
(depth) (depth)  
 Type Completion:  ALT. I  ALT. II Depth of:  DV Tool: \_\_\_\_\_ w / \_\_\_\_\_ sacks of cement  Port Collar: \_\_\_\_\_ w / \_\_\_\_\_ sack of cement  
(depth) (depth)  
 Packer Type: \_\_\_\_\_ Size: \_\_\_\_\_ Inch Set at: \_\_\_\_\_ Feet  
 Total Depth: \_\_\_\_\_ Plug Back Depth: \_\_\_\_\_ Plug Back Method: \_\_\_\_\_

**Geological Data:**

Formation Name	Formation Top	Formation Base	Completion Information
1. _____	At: _____	to _____ Feet	Perforation Interval _____ to _____ Feet or Open Hole Interval _____ to _____ Feet
2. _____	At: _____	to _____ Feet	Perforation Interval _____ to _____ Feet or Open Hole Interval _____ to _____ Feet

UNDER PENALTY OF PERJURY I HEREBY ATTEST THAT THE INFORMATION CONTAINED HEREIN IS TRUE AND CORRECT TO THE BEST OF MY KNOWLEDGE

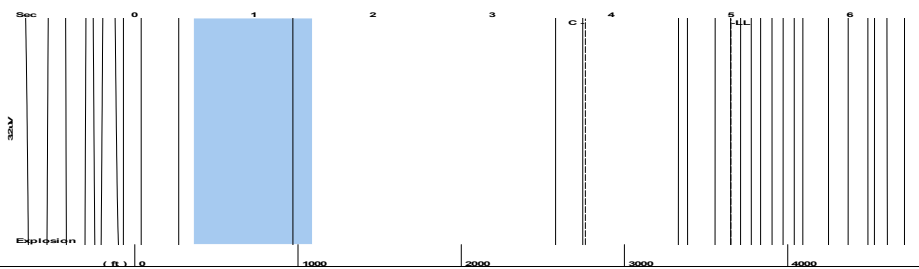
Submitted Electronically

<b>Do NOT Write in This Space - KCC USE ONLY</b>	Date Tested: _____	Results: _____	Date Plugged: _____	Date Repaired: _____	Date Put Back in Service: _____
	Review Completed by: _____ Comments: _____				
TA Approved: <input type="checkbox"/> Yes <input type="checkbox"/> Denied Date: _____					

Mail to the Appropriate KCC Conservation Office:

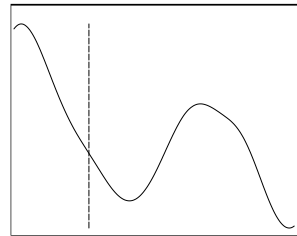
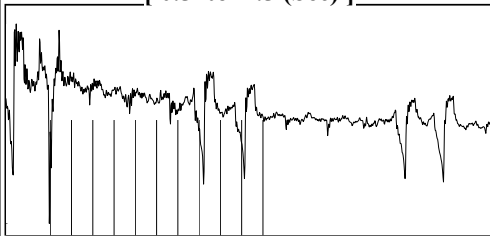
	KCC District Office #1 - 210 E. Frontview, Suite A, Dodge City, KS 67801	Phone 620.682.7933
	KCC District Office #2 - 3450 N. Rock Road, Building 600, Suite 601, Wichita, KS 67226	Phone 316.337.7400
	KCC District Office #3 - 137 E. 21st St., Chanute, KS 66720	Phone 620.902.6450
	KCC District Office #4 - 2301 E. 13th Street, Hays, KS 67601-2651	Phone 785.261.6250

Group: MyWells Well: GLENN MCCULLEY # 1 (acquired on: 04/25/24 12:55:53)



Filter Type High Pass Automatic Collar Count Yes Time 5.001 sec  
 Manual Acoustic Velocity 1450.8 ft/s Manual JTS/sec 22.8833 Joints 115.182 Jts  
 Depth 3651.27 ft

[ 0.5 to 1.5 (Sec) ]



**Analysis Method: Automatic**

Group: MyWells Well: GLENN MCCULLEY # 1 (acquired on: 04/25/24 12:55:53)

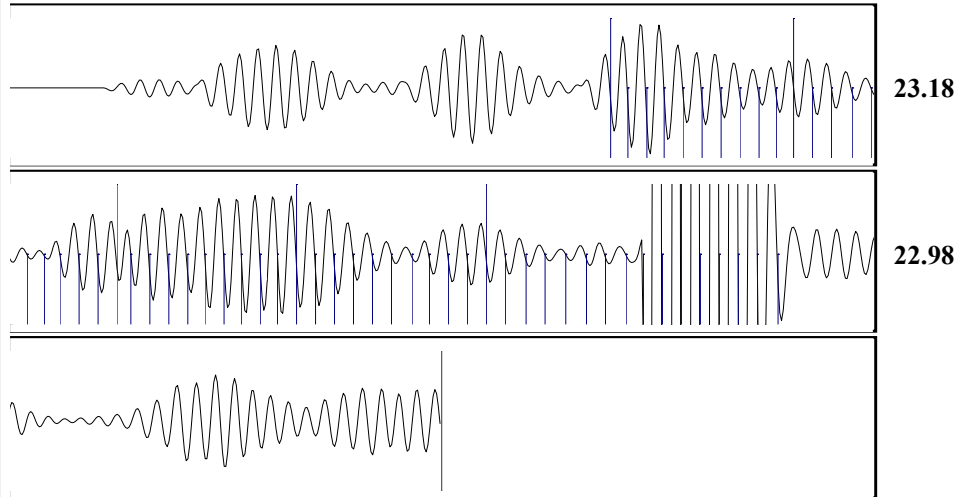


Change in Pressure 0.01 psi PT13682  
 Range 0 - ? psi  
 Change in Time 0.25 min

Group: MyWells Well: GLENN MCCULLEY # 1 (acquired on: 04/25/24 12:55:53)

<b>Production</b>		<b>Potential</b>		<b>Casing Pressure</b>		<b>Producing</b>	
Oil	- * -	- * -	BBL/D	-14.7	psi (g)	Annular	
Water	- * -	- * -	BBL/D	Casing Pressure Buildup		Gas Flow	- * - Mscf/D
Gas	- * -	- * -	Mscf/D	0.005	psi	% Liquid	100 %
				0.25	min		
IPR Method	Vogel	Gas/Liquid Interface Pressure		- * -	psi (g)		
PBHP/SBHP	- * -	Liquid Level Depth					
Production Efficiency	0.0	3651.27	ft				
Oil	40 deg.API	Pump Intake Depth					
Water	1.05 Sp.Gr.H2O	- * -	ft				
Gas	0.70 Sp.Gr.AIR	Formation Depth					
Acoustic Velocity	1460.22 ft/s	6350.00	ft				
Formation Submergence							
Total Gaseous Liquid Column HT (TVD)		- * -	ft				
Equivalent Gas Free Liquid HT (TVD)		- * -	ft				
Acoustic Test							

Group: MyWells Well: GLENN MCCULLEY # 1 (acquired on: 04/25/24 12:55:53)



Acoustic Velocity	1460.22	ft/s	Joints counted	55
Joints Per Second	23.0318	jts/sec	Joints to liquid level	115.182
Depth to liquid level	3651.27	ft	Filter Width	20.8833 24.8833
Automatic Collar Count	Yes		Time to 1st Collar	1.392 3.78

Conservation Division  
District Office No. 1  
210 E. Frontview, Suite A  
Dodge City, KS 67801



Phone: 620-682-7933  
<http://kcc.ks.gov/>

Andrew J. French, Chairperson  
Dwight D. Keen, Commissioner  
Annie Kuether, Commissioner

Laura Kelly, Governor

05/15/2024

Octavio Morales  
American Warrior, Inc.  
PO BOX 399  
GARDEN CITY, KS 67846-0399

Re: Temporary Abandonment  
API 15-189-20924-00-00  
MCCULLEY GLENN 1  
NE/4 Sec.15-32S-35W  
Stevens County, Kansas

Dear Octavio Morales:

Your application for Temporary Abandonment (TA) for the above-listed well is denied for the following reasons(s):

**Shut-in Over 10 years**

Pursuant to K.A.R. 82-3-111, the well must be plugged, or returned to service, or obtain temporary abandonment status by 06/14/2024.

**This deadline does NOT override any compliance deadline given to you in any Commission Order.**

You may contact me if you have any questions.

Sincerely,  
Michael Maier  
KCC DISTRICT 1