

KANSAS CORPORATION COMMISSION
OIL & GAS CONSERVATION DIVISION

TEMPORARY ABANDONMENT WELL APPLICATION

OPERATOR: License#
Name:
Address 1:
Address 2:
City: State: Zip:
Contact Person:
Phone:
Contact Person Email:
Field Contact Person:
Field Contact Person Phone:

API No. 15-
Spot Description:
Sec. Twp. S. R.
GPS Location: Lat: Long:
Datum: NAD27 NAD83 WGS84
County: Elevation:
Lease Name: Well #:
Well Type: Oil Gas OG WSW Other:
SWD Permit #: ENHR Permit #:
Gas Storage Permit #:
Spud Date: Date Shut-In:

Table with 7 columns: Conductor, Surface, Production, Intermediate, Liner, Tubing. Rows include Size, Setting Depth, Amount of Cement, Top of Cement, Bottom of Cement.

Casing Fluid Level from Surface: How Determined? Date:
Casing Squeeze(s): to w / sacks of cement, to w / sacks of cement. Date:
Do you have a valid Oil & Gas Lease? Yes No
Depth and Type: Junk in Hole at Tools in Hole at Casing Leaks: Yes No Depth of casing leak(s):
Type Completion: ALT. I ALT. II Depth of: DV Tool: w / sacks of cement Port Collar: w / sack of cement
Packer Type: Size: Inch Set at: Feet
Total Depth: Plug Back Depth: Plug Back Method:

Geological Data:

Table with 4 columns: Formation Name, Formation Top, Formation Base, Completion Information. Rows 1 and 2.

UNDER PENALTY OF PERJURY I HEREBY ATTEST THAT THE INFORMATION CONTAINED HEREIN IS TRUE AND CORRECT TO THE BEST OF MY KNOWLEDGE

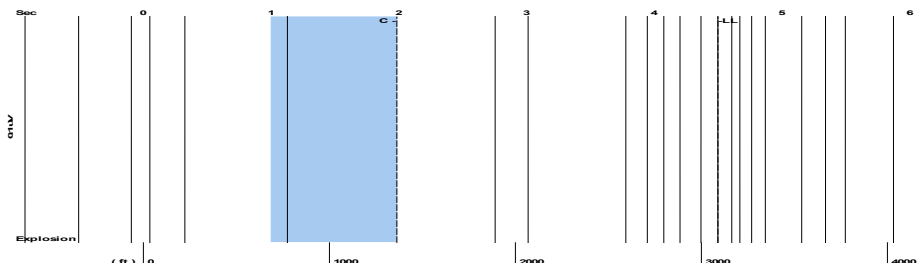
Submitted Electronically

Form with fields: Do NOT Write in This Space - KCC USE ONLY, Date Tested, Results, Date Plugged, Date Repaired, Date Put Back in Service, Review Completed by, Comments, TA Approved: Yes Denied, Date.

Mail to the Appropriate KCC Conservation Office:

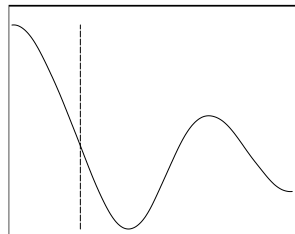
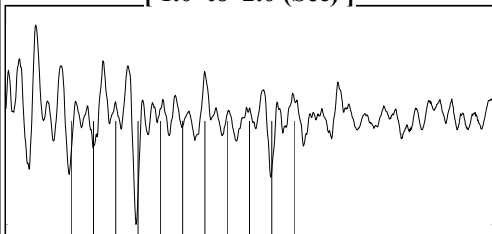
Table with 2 columns: Office Address, Phone. Rows for District Office #1, #2, #3, #4.

Group: MyWells Well: DAVIS A # 1 (acquired on: 04/25/24 13:21:02)



Filter Type High Pass Automatic Collar Count Yes Time 4.498 sec
 Manual Acoustic Veloc 1384.28 ft/s Manual JTS/sec 21.8341 Joints 97.4391 Jts
 Depth 3088.82 ft

[1.0 to 2.0 (Sec)]



Analysis Method: Automatic

Group: MyWells Well: DAVIS A # 1 (acquired on: 04/25/24 13:21:02)

NO PRESSURE DATA AVAILABLE

Change in Pressure 0.00 psi PT13682
 Range 0 - ? psi
 Change in Time 0.00 min

Group: MyWells Well: DAVIS A # 1 (acquired on: 04/25/24 13:21:02)

Production Current Potential
 Oil - * - BBL/D
 Water - * - BBL/D
 Gas - * - Mscf/D
 IPR Method Vogel
 PBHP/SBHP - * -
 Production Efficiency 0.0

Casing Pressure -14.7 psi (g)
 Casing Pressure Buildup - * - psi
 Gas/Liquid Interface Pressure - * - psi (g)

Liquid Level Depth 3088.82 ft

Pump Intake Depth - * - ft

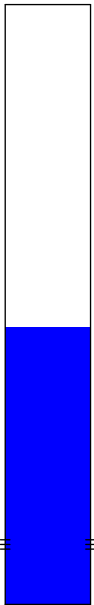
Formation Depth 5640.00 ft

Oil 40 deg.API
 Water 1.05 Sp.Gr.H2O
 Gas 0.70 Sp.Gr.AIR

Acoustic Velocity 1373.42 ft/s

Formation Submergence
 Total Gaseous Liquid Column HT (TVD) - * - ft
 Equivalent Gas Free Liquid HT (TVD) - * - ft

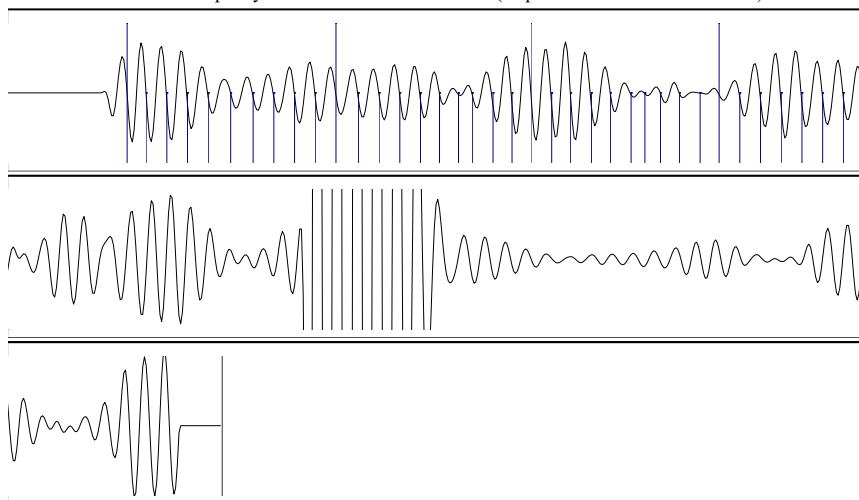
Acoustic Test



Producing
 Annular Gas Flow - * - Mscf/D
 % Liquid 100 %

Pump Intake - * - psi (g)
 Producing BHP - * - psi (g)
 Static BHP - * - psi (g)

Group: MyWells Well: DAVIS A # 1 (acquired on: 04/25/24 13:21:02)



21.66

Acoustic Velocity 1373.42 ft/s Joints counted 37
 Joints Per Second 21.6628 jts/sec Joints to liquid level 97.4391
 Depth to liquid level 3088.82 ft Filter Width 19.8341 23.8341
 Automatic Collar Count Yes Time to 1st Collar 0.276 1.984

Conservation Division
District Office No. 1
210 E. Frontview, Suite A
Dodge City, KS 67801



Phone: 620-682-7933
<http://kcc.ks.gov/>

Andrew J. French, Chairperson
Dwight D. Keen, Commissioner
Annie Kuether, Commissioner

Laura Kelly, Governor

05/15/2024

Octavio Morales
American Warrior, Inc.
PO BOX 399
GARDEN CITY, KS 67846-0399

Re: Temporary Abandonment
API 15-189-21790-00-00
DAVIS A 1
NE/4 Sec.12-32S-35W
Stevens County, Kansas

Dear Octavio Morales:

"Your temporary abandonment (TA) application for the well listed above has been approved. In accordance with K.A.R. 82-3-111 the TA status of this well will expire 05/15/2025.

- * If you return this well to service or plug it, please notify the District Office.
- * If you sell this well you are required to file a Transfer of Operator form, T-1.
- * If the well will remain temporarily abandoned, you must submit a new TA application, CP-111, before 05/15/2025.

You may contact me at the number above if you have questions.

Very truly yours,

Michael Maier"