

KANSAS CORPORATION COMMISSION  
OIL & GAS CONSERVATION DIVISION

TEMPORARY ABANDONMENT WELL APPLICATION

OPERATOR: License# \_\_\_\_\_  
 Name: \_\_\_\_\_  
 Address 1: \_\_\_\_\_  
 Address 2: \_\_\_\_\_  
 City: \_\_\_\_\_ State: \_\_\_\_\_ Zip: \_\_\_\_\_ + \_\_\_\_\_  
 Contact Person: \_\_\_\_\_  
 Phone: ( \_\_\_\_\_ ) \_\_\_\_\_  
 Contact Person Email: \_\_\_\_\_  
 Field Contact Person: \_\_\_\_\_  
 Field Contact Person Phone: ( \_\_\_\_\_ ) \_\_\_\_\_

API No. 15- \_\_\_\_\_  
 Spot Description: \_\_\_\_\_  
 \_\_\_\_\_ - \_\_\_\_\_ - \_\_\_\_\_ - \_\_\_\_\_ Sec. \_\_\_\_\_ Twp. \_\_\_\_\_ S. R. \_\_\_\_\_  E  W  
 \_\_\_\_\_ feet from  N /  S Line of Section  
 \_\_\_\_\_ feet from  E /  W Line of Section  
 GPS Location: Lat: \_\_\_\_\_, Long: \_\_\_\_\_  
(e.g. xx.xxxxx) (e.g. -xxx.xxxxx)  
 Datum:  NAD27  NAD83  WGS84  
 County: \_\_\_\_\_ Elevation: \_\_\_\_\_  GL  KB  
 Lease Name: \_\_\_\_\_ Well #: \_\_\_\_\_  
 Well Type: (check one)  Oil  Gas  OG  WSW  Other: \_\_\_\_\_  
 SWD Permit #: \_\_\_\_\_  ENHR Permit #: \_\_\_\_\_  
 Gas Storage Permit #: \_\_\_\_\_  
 Spud Date: \_\_\_\_\_ Date Shut-In: \_\_\_\_\_

	Conductor	Surface	Production	Intermediate	Liner	Tubing
Size						
Setting Depth						
Amount of Cement						
Top of Cement						
Bottom of Cement						

Casing Fluid Level from Surface: \_\_\_\_\_ How Determined? \_\_\_\_\_ Date: \_\_\_\_\_  
 Casing Squeeze(s): \_\_\_\_\_ to \_\_\_\_\_ w / \_\_\_\_\_ sacks of cement, \_\_\_\_\_ to \_\_\_\_\_ w / \_\_\_\_\_ sacks of cement. Date: \_\_\_\_\_  
(top) (bottom) (top) (bottom)  
 Do you have a valid Oil & Gas Lease?  Yes  No  
 Depth and Type:  Junk in Hole at \_\_\_\_\_  Tools in Hole at \_\_\_\_\_ Casing Leaks:  Yes  No Depth of casing leak(s): \_\_\_\_\_  
(depth) (depth)  
 Type Completion:  ALT. I  ALT. II Depth of:  DV Tool: \_\_\_\_\_ w / \_\_\_\_\_ sacks of cement  Port Collar: \_\_\_\_\_ w / \_\_\_\_\_ sack of cement  
(depth) (depth)  
 Packer Type: \_\_\_\_\_ Size: \_\_\_\_\_ Inch Set at: \_\_\_\_\_ Feet  
 Total Depth: \_\_\_\_\_ Plug Back Depth: \_\_\_\_\_ Plug Back Method: \_\_\_\_\_

**Geological Data:**

Formation Name	Formation Top	Formation Base	Completion Information
1. _____	At: _____	to _____ Feet	Perforation Interval _____ to _____ Feet or Open Hole Interval _____ to _____ Feet
2. _____	At: _____	to _____ Feet	Perforation Interval _____ to _____ Feet or Open Hole Interval _____ to _____ Feet

UNDER PENALTY OF PERJURY I HEREBY ATTEST THAT THE INFORMATION CONTAINED HEREIN IS TRUE AND CORRECT TO THE BEST OF MY KNOWLEDGE

Submitted Electronically

<b>Do NOT Write in This Space - KCC USE ONLY</b>	Date Tested: _____	Results: _____	Date Plugged: _____	Date Repaired: _____	Date Put Back in Service: _____
	Review Completed by: _____ Comments: _____				
TA Approved: <input type="checkbox"/> Yes <input type="checkbox"/> Denied Date: _____					

Mail to the Appropriate KCC Conservation Office:

	KCC District Office #1 - 210 E. Frontview, Suite A, Dodge City, KS 67801	Phone 620.682.7933
	KCC District Office #2 - 3450 N. Rock Road, Building 600, Suite 601, Wichita, KS 67226	Phone 316.337.7400
	KCC District Office #3 - 137 E. 21st St., Chanute, KS 66720	Phone 620.902.6450
	KCC District Office #4 - 2301 E. 13th Street, Hays, KS 67601-2651	Phone 785.261.6250

# KANSAS CORPORATION COMMISSION

## ONE POINT STABILIZED OPEN FLOW OR DELIVERABILITY TEST

Type Test:

- Open Flow  
 Deliverability

(See Instructions on Reverse Side)

Test Date:  
10-9-12

API No. 15  
15-191-22234 -- ∞ -- ∞

Company <b>Bear Petroleum LLC</b>		Lease <b>Metzinger</b>		Well Number <b>3X</b>	
County <b>Sumner</b>	Location <b>W/2 NE NW SW</b>	Section <b>35</b>	TWP <b>34</b>	RNG (E/W) <b>2E</b>	Acres Attributed
Field <b>Padgett</b>		Reservoir <b>Cleveland</b>		Gas Gathering Connection <b>Endeavor Energy Resources LP</b>	
Completion Date <b>2-14-94</b>		Plug Back Total Depth <b>3150</b>		Packer Set at <b>NA</b>	
Casing Size <b>5 1/2"</b>	Weight	Internal Diameter <b>5"</b>	Set at <b>3626</b>	Perforations <b>3118</b>	To <b>3128</b>
Tubing Size <b>2 3/8"</b>	Weight <b>4.8</b>	Internal Diameter <b>2"</b>	Set at <b>3130</b>	Perforations	To
Type Completion (Describe) <b>Alt 1</b>		Type Fluid Production <b>Saltwater</b>		Pump Unit or Traveling Plunger? Yes / No <b>Pumping Unit</b>	
Producing Thru (Annulus / Tubing) <b>Annulus</b>		% Carbon Dioxide		% Nitrogen	
Vertical Depth(H)		Pressure Taps		(Meter Run) (Prover) Size <b>2"</b>	
Pressure Buildup: Shut in <b>10-8</b> at <b>9:00</b> <b>(AM)</b> (PM) Taken <b>10-9</b> at <b>9:00</b> <b>(AM)</b> (PM)					
Well on Line: Started _____ at _____ (AM) (PM) Taken _____ at _____ (AM) (PM)					

RECEIVED  
OCT 31 2012  
KCG WICHITA

### OBSERVED SURFACE DATA

Static / Dynamic Property	Orifice Size (inches)	Circle one: Meter or Prover Pressure (psig (Pm))	Pressure Differential in Inches H <sub>2</sub> O	Flowing Temperature t	Well Head Temperature t	Casing Wellhead Pressure (P <sub>w</sub> ) or (P <sub>1</sub> ) or (P <sub>c</sub> )		Tubing Wellhead Pressure (P <sub>w</sub> ) or (P <sub>1</sub> ) or (P <sub>c</sub> )		Duration (Hours)	Liquid Produced (Barrels)
						psig	psia	psig	psia		
Shut-In						40					
Flow											

### FLOW STREAM ATTRIBUTES

Plate Coefficient (F <sub>s</sub> ) (F <sub>p</sub> ) Mcfd	Circle one: Meter or Prover Pressure psia	Press Extension $\sqrt{P_m \times h}$	Gravity Factor F <sub>g</sub>	Flowing Temperature Factor F <sub>t</sub>	Deviation Factor F <sub>pv</sub>	Metered Flow R (Mcfd)	GOR (Cubic Feet/ Barrel)	Flowing Fluid Gravity G <sub>m</sub>

### (OPEN FLOW) (DELIVERABILITY) CALCULATIONS

(P<sub>c</sub>)<sup>2</sup> = \_\_\_\_\_ : (P<sub>w</sub>)<sup>2</sup> = \_\_\_\_\_ : P<sub>a</sub> = \_\_\_\_\_ % (P<sub>c</sub> - 14.4) + 14.4 = \_\_\_\_\_ : (P<sub>1</sub>)<sup>2</sup> = 0.207  
(P<sub>d</sub>)<sup>2</sup> = \_\_\_\_\_

(P <sub>o</sub> ) <sup>2</sup> - (P <sub>s</sub> ) <sup>2</sup> or (P <sub>o</sub> ) <sup>2</sup> - (P <sub>p</sub> ) <sup>2</sup>	(P <sub>c</sub> ) <sup>2</sup> - (P <sub>w</sub> ) <sup>2</sup>	Choose formula 1 or 2: 1. P <sub>c</sub> <sup>2</sup> - P <sub>a</sub> <sup>2</sup> 2. P <sub>o</sub> <sup>2</sup> - P <sub>d</sub> <sup>2</sup> divided by: P <sub>c</sub> <sup>2</sup> - P <sub>w</sub> <sup>2</sup>	LOG of formula 1, or 2, and divide by: $\frac{P_c^2 - P_w^2}{P_c^2 - P_w^2}$	Backpressure Curve Slope = "n" Assigned Standard Slope	n x LOG [ ]	Antilog	Open Flow Deliverability Equals R x Antilog (Mcfd)

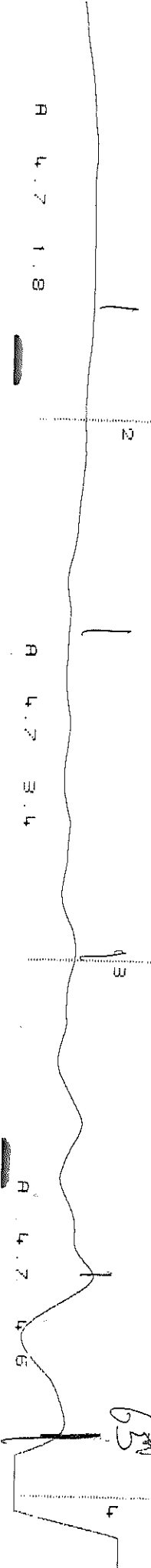
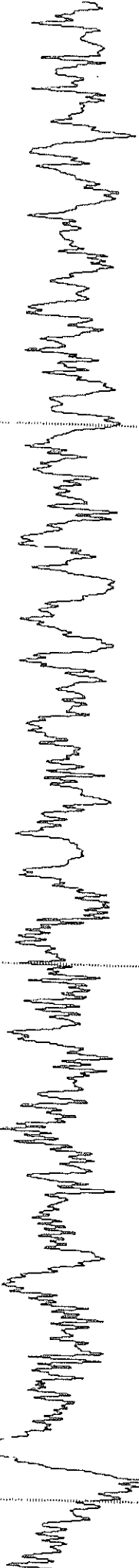
Open Flow Mcfd @ 14.65 psia      Deliverability      Mcfd @ 14.65 psia

The undersigned authority, on behalf of the Company, states that he is duly authorized to make the above report and that he has knowledge of the facts stated therein, and that said report is true and correct. Executed this the 30th day of October, 20 12.

\_\_\_\_\_  
Witness (if any)  
\_\_\_\_\_  
For Commission

**Bear Petroleum LLC**  
\_\_\_\_\_  
Don Jenkins Jr. For Company  
\_\_\_\_\_  
Checked by

ECHOMETER COMPANY PHONE-940-767-4334 7.3



MEI ZINGER 3X

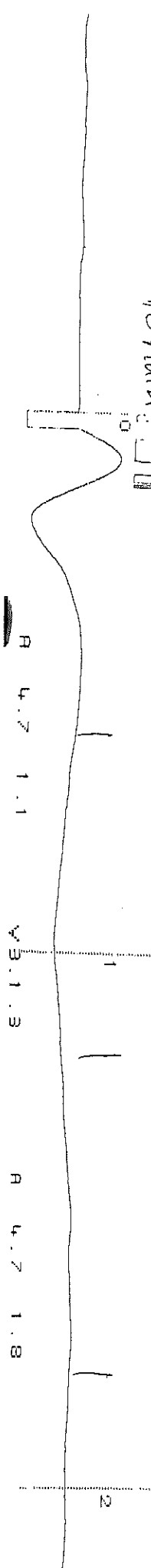
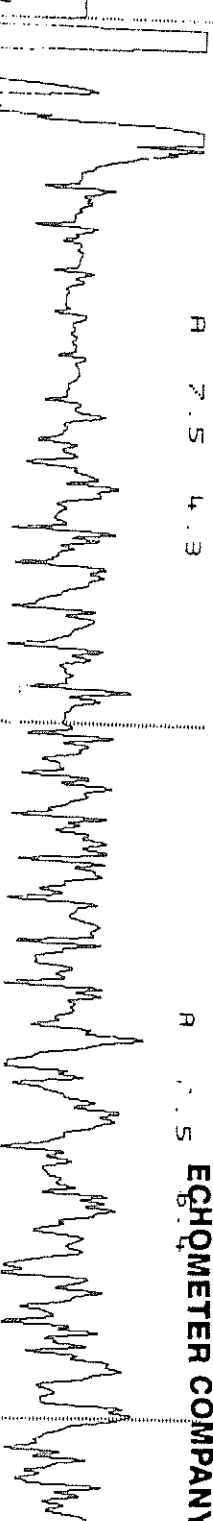
5/15/24

65 JTFX32/5t = 2080'

to fluid

7.5 4.3

ECHOMETER COMPANY



Conservation Division  
District Office No. 2  
3450 N. Rock Road  
Building 600, Suite 601  
Wichita, KS 67226



Phone: 316-337-7400  
<http://kcc.ks.gov/>

Andrew J. French, Chairperson  
Dwight D. Keen, Commissioner  
Annie Kuether, Commissioner

Laura Kelly, Governor

05/16/2024

Darren Broyles  
Drake Exploration, LLC  
15894 294TH CIR #19  
ARKANSAS CITY, KS 67005-6126

Re: Temporary Abandonment  
API 15-191-22234-00-00  
METZINGER 3X  
SW/4 Sec.35-34S-02E  
Sumner County, Kansas

Dear Darren Broyles:

"Your temporary abandonment (TA) application for the well listed above has been approved. In accordance with K.A.R. 82-3-111 the TA status of this well will expire 05/16/2025.

- \* If you return this well to service or plug it, please notify the District Office.
- \* If you sell this well you are required to file a Transfer of Operator form, T-1.
- \* If the well will remain temporarily abandoned, you must submit a new TA application, CP-111, before 05/16/2025.

You may contact me at the number above if you have questions.

Very truly yours,

Dan Fox"