

KANSAS CORPORATION COMMISSION
OIL & GAS CONSERVATION DIVISION

TEMPORARY ABANDONMENT WELL APPLICATION

OPERATOR: License# _____
 Name: _____
 Address 1: _____
 Address 2: _____
 City: _____ State: _____ Zip: _____ + _____
 Contact Person: _____
 Phone: (_____) _____
 Contact Person Email: _____
 Field Contact Person: _____
 Field Contact Person Phone: (_____) _____

API No. 15- _____
 Spot Description: _____
 _____ - _____ - _____ - _____ Sec. _____ Twp. _____ S. R. _____ E W
 _____ feet from N / S Line of Section
 _____ feet from E / W Line of Section
 GPS Location: Lat: _____, Long: _____
(e.g. xx.xxxxx) (e.g. -xxx.xxxxx)
 Datum: NAD27 NAD83 WGS84
 County: _____ Elevation: _____ GL KB
 Lease Name: _____ Well #: _____
 Well Type: (check one) Oil Gas OG WSW Other: _____
 SWD Permit #: _____ ENHR Permit #: _____
 Gas Storage Permit #: _____
 Spud Date: _____ Date Shut-In: _____

	Conductor	Surface	Production	Intermediate	Liner	Tubing
Size						
Setting Depth						
Amount of Cement						
Top of Cement						
Bottom of Cement						

Casing Fluid Level from Surface: _____ How Determined? _____ Date: _____
 Casing Squeeze(s): _____ to _____ w / _____ sacks of cement, _____ to _____ w / _____ sacks of cement. Date: _____
(top) (bottom) (top) (bottom)
 Do you have a valid Oil & Gas Lease? Yes No
 Depth and Type: Junk in Hole at _____ Tools in Hole at _____ Casing Leaks: Yes No Depth of casing leak(s): _____
(depth) (depth)
 Type Completion: ALT. I ALT. II Depth of: DV Tool: _____ w / _____ sacks of cement Port Collar: _____ w / _____ sack of cement
(depth) (depth)
 Packer Type: _____ Size: _____ Inch Set at: _____ Feet
 Total Depth: _____ Plug Back Depth: _____ Plug Back Method: _____

Geological Data:

Formation Name	Formation Top	Formation Base	Completion Information
1. _____	At: _____	to _____ Feet	Perforation Interval _____ to _____ Feet or Open Hole Interval _____ to _____ Feet
2. _____	At: _____	to _____ Feet	Perforation Interval _____ to _____ Feet or Open Hole Interval _____ to _____ Feet

UNDER PENALTY OF PERJURY I HEREBY ATTEST THAT THE INFORMATION CONTAINED HEREIN IS TRUE AND CORRECT TO THE BEST OF MY KNOWLEDGE

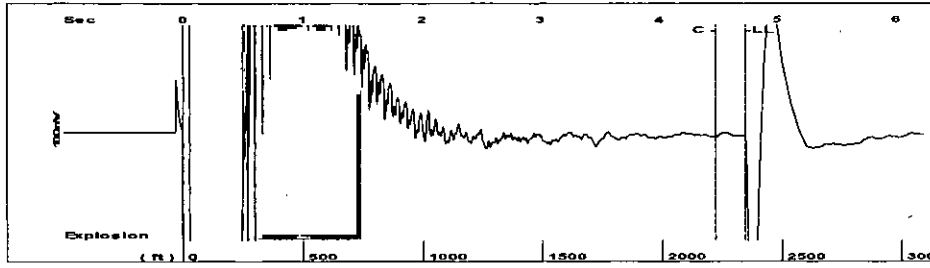
Submitted Electronically

Do NOT Write in This Space - KCC USE ONLY	Date Tested: _____	Results: _____	Date Plugged: _____	Date Repaired: _____	Date Put Back in Service: _____
	Review Completed by: _____ Comments: _____				
TA Approved: <input type="checkbox"/> Yes <input type="checkbox"/> Denied Date: _____					

Mail to the Appropriate KCC Conservation Office:

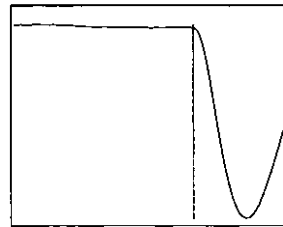
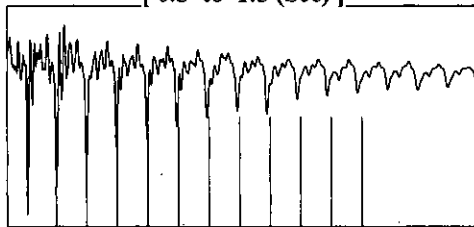
	KCC District Office #1 - 210 E. Frontview, Suite A, Dodge City, KS 67801	Phone 620.682.7933
	KCC District Office #2 - 3450 N. Rock Road, Building 600, Suite 601, Wichita, KS 67226	Phone 316.337.7400
	KCC District Office #3 - 137 E. 21st St., Chanute, KS 66720	Phone 620.902.6450
	KCC District Office #4 - 2301 E. 13th Street, Hays, KS 67601-2651	Phone 785.261.6250

Group: MyWells Well: PALMQUIST 3-32 (acquired on: 05/15/24 13:53:15)



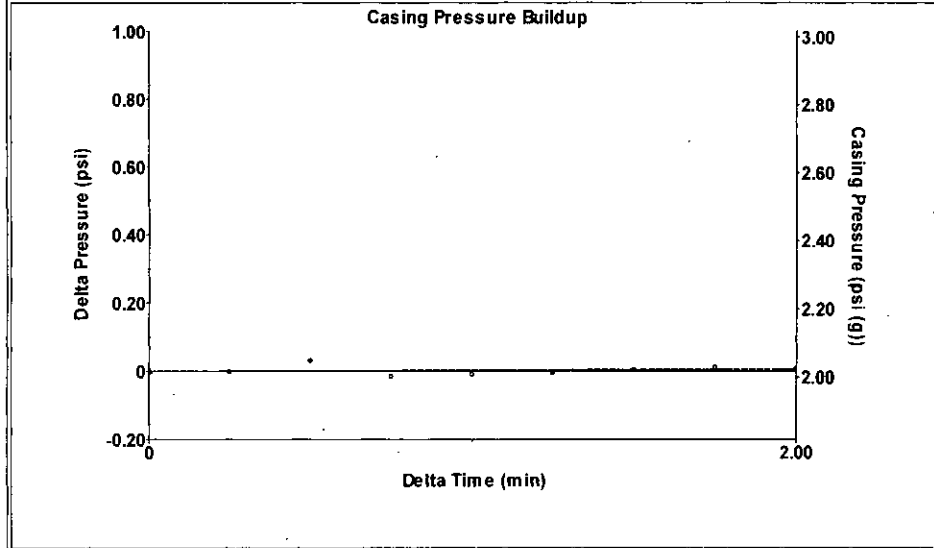
Filter Type High Pass Automatic Collar Count Yes Time 4.732 sec
 Manual Acoustic Veloc 975.385 ft/s Manual JTS/sec 15.3846 Joints 74.0076 Jts
 Depth 2346.04 ft

[0.5 to 1.5 (Sec)]



Analysis Method: Automatic

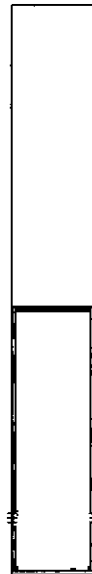
Group: MyWells Well: PALMQUIST 3-32 (acquired on: 05/15/24 13:53:15)



Change in Pressure 0.01 psi PT15565
 Range 0 - 7 psi
 Change in Time 2.00 min

Group: MyWells Well: PALMQUIST 3-32 (acquired on: 05/15/24 13:53:15)

Production	Potential	Casing Pressure
Oil -*- BBL/D	-*- BBL/D	2.0 psi (g)
Water -*- BBL/D	-*- BBL/D	Casing Pressure Buildup
Gas -*- Mscf/D	-*- Mscf/D	0.0 psi
		2.00 min
IPR Method Vogel	Gas/Liquid Interface Pressure	-*- psi (g)
PBHP/SBHP -*-		
Production Efficiency 0.0		
	Liquid Level Depth	
Oil 40 deg API	2346.04 ft	
Water 1.05 Sp.Gr.H2O	Pump Intake Depth	
Gas 0.98 Sp.Gr.AIR	-*- ft	
Acoustic Velocity 991.564 ft/s	Formation Depth	
	4414.00 ft	



Producing

Annular Gas Flow -*- Mscf/D

% Liquid 100 %

Pump Intake -*- psi (g)

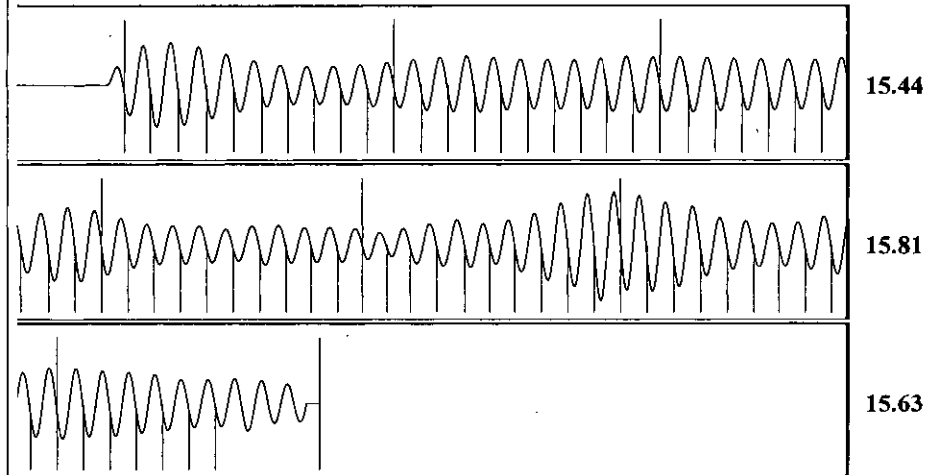
Producing BHP -*- psi (g)

Static BHP -*- psi (g)

Formation Submergence -*- ft
 Total Gaseous Liquid Column HT (TVD) -*- ft
 Equivalent Gas Free Liquid HT (TVD) -*- ft

Palmquist 3

Group: MyWells Well: PALMQUIST 3-32 (acquired on: 05/15/24 13:53:15)



Acoustic Velocity	991.564 ft/s	Joints counted	66
Joints Per Second	15.6398 jts/sec	Joints to liquid level	74.0076
Depth to liquid level	2346.04 ft	Filter Width	13.3846
Automatic Collar Count	Yes	Time to 1st Collar	0.26
			17.3846
			4.48

05/22/2024

Anthony Farrar
Indian Oil Co., Inc.
308 S. Main St.
PO BOX 209
MEDICINE LODGE, KS 67104-0209

Re: Temporary Abandonment
API 15-151-21937-00-02
PALMQUIST OWWO 3-32
SE/4 Sec.32-29S-13W
Pratt County, Kansas

Dear Anthony Farrar:

"Your temporary abandonment (TA) application for the well listed above has been approved. In accordance with K.A.R. 82-3-111 the TA status of this well will expire 05/22/2025.

- * If you return this well to service or plug it, please notify the District Office.
- * If you sell this well you are required to file a Transfer of Operator form, T-1.
- * If the well will remain temporarily abandoned, you must submit a new TA application, CP-111, before 05/22/2025.

You may contact me at the number above if you have questions.

Very truly yours,

Michael Maier"