

KANSAS CORPORATION COMMISSION
OIL & GAS CONSERVATION DIVISION

Form must be Typed
Form must be signed

TEMPORARY ABANDONMENT WELL APPLICATION

All blanks must be complete

OPERATOR: License#
Name:
Address 1:
Address 2:
City: State: Zip:
Contact Person:
Phone:
Contact Person Email:
Field Contact Person:
Field Contact Person Phone:

API No. 15-
Spot Description:
Sec. Twp. S. R.
feet from N / S Line of Section
feet from E / W Line of Section
GPS Location: Lat: , Long:
Datum: NAD27 NAD83 WGS84
County: Elevation: GL KB
Lease Name: Well #:
Well Type: (check one) Oil Gas OG WSW Other:
SWD Permit #: ENHR Permit #:
Gas Storage Permit #:
Spud Date: Date Shut-In:

Table with 7 columns: Conductor, Surface, Production, Intermediate, Liner, Tubing. Rows include Size, Setting Depth, Amount of Cement, Top of Cement, Bottom of Cement.

Casing Fluid Level from Surface: How Determined? Date:
Casing Squeeze(s): to w / sacks of cement, to w / sacks of cement. Date:
Do you have a valid Oil & Gas Lease? Yes No
Depth and Type: Junk in Hole at Tools in Hole at Casing Leaks: Yes No Depth of casing leak(s):
Type Completion: ALT. I ALT. II Depth of: DV Tool: w / sacks of cement Port Collar: w / sack of cement
Packer Type: Size: Inch Set at: Feet
Total Depth: Plug Back Depth: Plug Back Method:

Geological Data:

Table with 4 columns: Formation Name, Formation Top, Formation Base, Completion Information. Rows 1 and 2.

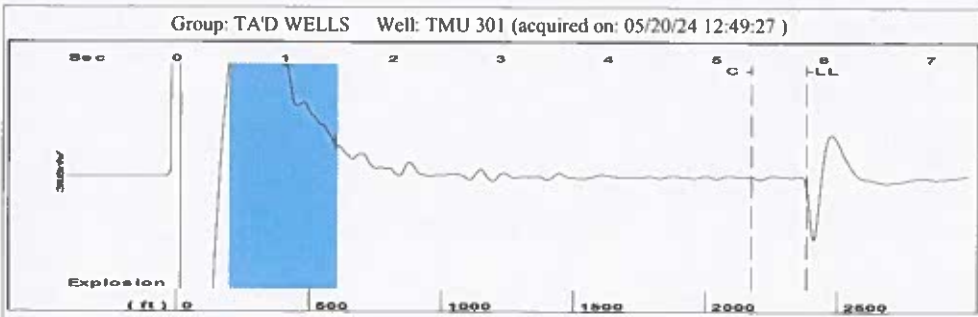
UNDER PENALTY OF PERJURY I HEREBY ATTEST THAT THE INFORMATION CONTAINED HEREIN IS TRUE AND CORRECT TO THE BEST OF MY KNOWLEDGE

Submitted Electronically

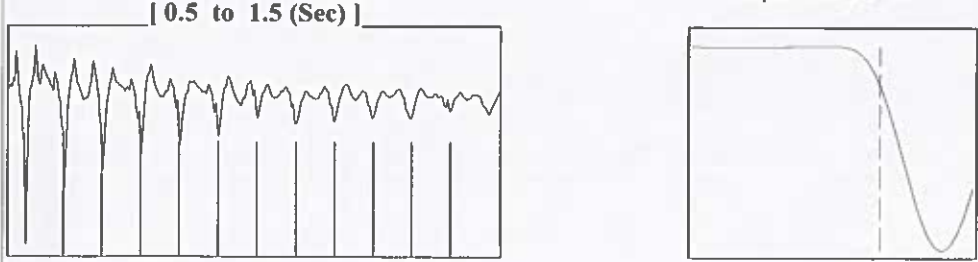
Do NOT Write in This Space - KCC USE ONLY
Date Tested: Results: Date Plugged: Date Repaired: Date Put Back in Service:
Review Completed by: Comments:
TA Approved: Yes Denied Date:

Mail to the Appropriate KCC Conservation Office:

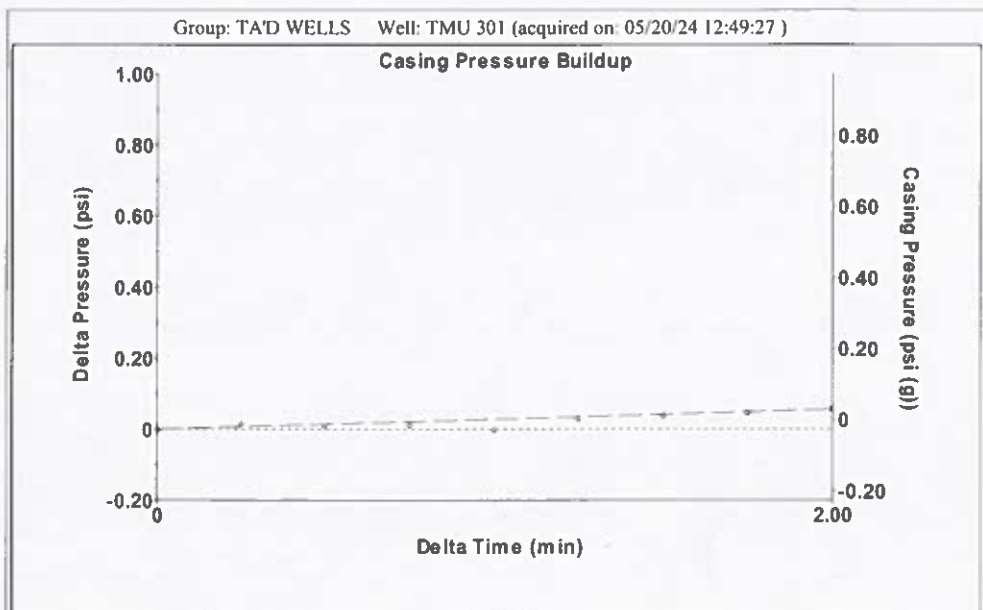
Table with 2 columns: Office Address, Phone. Rows for District Office #1, #2, #3, #4.



Filter Type High Pass Automatic Collar Count Yes Time 5.847 sec
 Manual Acoustic Veloc 804.32 ft/s Manual JTS/sec 12.7065 Joints 75.2882 Jts
 Depth 2382.87 ft



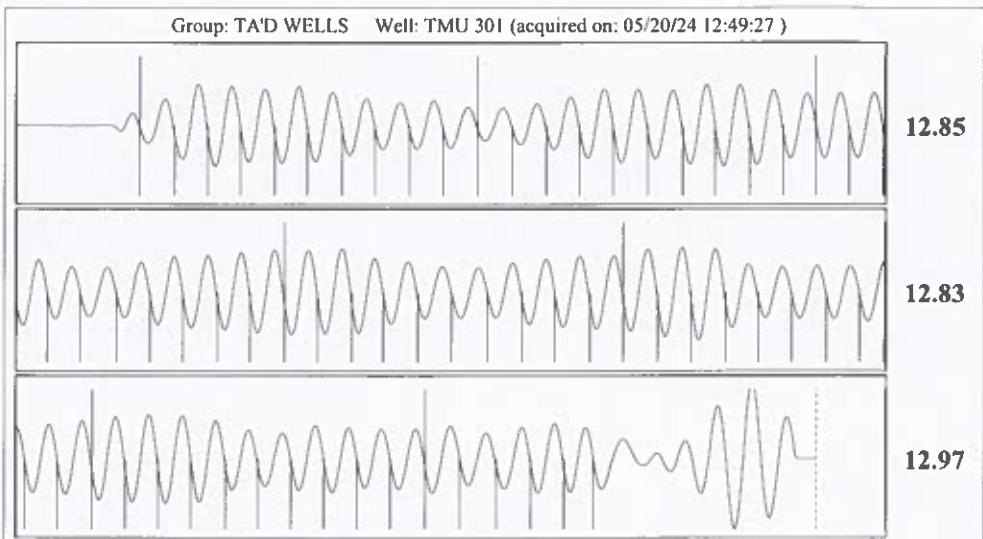
Analysis Method: Automatic



Change in Pressure 0.06 psi PT10411
 Range 0 - ? psi
 Change in Time 2.00 min

Group: TA'D WELLS Well: TMU 301 (acquired on: 05/20/24 12:49:27)

Production Current	Potential	Casing Pressure		Producing
Oil - * -	- * - BBL/D	-0.0 psi (g)		Annular Gas Flow
Water - * -	- * - BBL/D	Casing Pressure Buildup		1 Mscf/D
Gas - * -	- * - Mscf/D	0.1 psi		% Liquid
IPR Method	Vogel	2.00 min		99 %
PBHP/SBHP	- * -	Gas/Liquid Interface Pressure		
Production Efficiency	0.0	1.4 psi (g)		
Oil 40 deg.API		Liquid Level Depth		
Water 1.05 Sp.Gr.H2O		2382.87 ft		
Gas 1.15 Sp.Gr.AIR		Pump Intake Depth		
Acoustic Velocity	815.075 ft/s	4759.00 ft		
		Formation Depth		
		5025.00 ft		
Formation Submergence			Pump Intake	
Total Gaseous Liquid Column HT (TVD)	2376 ft		781.2 psi (g)	
Equivalent Gas Free Liquid HT (TVD)	2359 ft		Producing BHP	
			901.5 psi (g)	
Acoustic Test			Static BHP	
			- * - psi (g)	



Acoustic Velocity 815.075 ft/s Joints counted 65
 Joints Per Second 12.8764 jts/sec Joints to liquid level 75.2882
 Depth to liquid level 2382.87 ft Filter Width 10.7065 14.7065
 Automatic Collar Count Yes Time to 1st Collar 0.284 5.332

05/22/2024

Katherine McClurkan
Merit Energy Company, LLC
13727 Noel Road, Suite 1200
Dallas, TX 75240-7362

Re: Temporary Abandonment
API 15-129-20832-00-00
Turmorrow Morrow Unit (Galloway A) 301 (1)
SW/4 Sec.08-33S-43W
Morton County, Kansas

Dear Katherine McClurkan:

"Your temporary abandonment (TA) application for the well listed above has been approved. In accordance with K.A.R. 82-3-111 the TA status of this well will expire 05/22/2025.

- * If you return this well to service or plug it, please notify the District Office.
- * If you sell this well you are required to file a Transfer of Operator form, T-1.
- * If the well will remain temporarily abandoned, you must submit a new TA application, CP-111, before 05/22/2025.

You may contact me at the number above if you have questions.

Very truly yours,

Michael Maier"