

KANSAS CORPORATION COMMISSION
OIL & GAS CONSERVATION DIVISION

TEMPORARY ABANDONMENT WELL APPLICATION

OPERATOR: License#
Name:
Address 1:
Address 2:
City: State: Zip:
Contact Person:
Phone:
Contact Person Email:
Field Contact Person:
Field Contact Person Phone:

API No. 15-
Spot Description:
Sec. Twp. S. R.
feet from N / S Line of Section
feet from E / W Line of Section
GPS Location: Lat: , Long:
Datum: NAD27 NAD83 WGS84
County: Elevation: GL KB
Lease Name: Well #:
Well Type: Oil Gas OG WSW Other:
SWD Permit #: ENHR Permit #:
Gas Storage Permit #:
Spud Date: Date Shut-In:

Table with 7 columns: Conductor, Surface, Production, Intermediate, Liner, Tubing. Rows include Size, Setting Depth, Amount of Cement, Top of Cement, Bottom of Cement.

Casing Fluid Level from Surface: How Determined? Date:
Casing Squeeze(s): to w / sacks of cement, to w / sacks of cement. Date:
Do you have a valid Oil & Gas Lease? Yes No
Depth and Type: Junk in Hole at Tools in Hole at Casing Leaks: Yes No Depth of casing leak(s):
Type Completion: ALT. I ALT. II Depth of: DV Tool: w / sacks of cement Port Collar: w / sack of cement
Packer Type: Size: Inch Set at: Feet
Total Depth: Plug Back Depth: Plug Back Method:

Geological Date:

Table with 4 columns: Formation Name, Formation Top, Formation Base, Completion Information. Rows 1 and 2.

UNDER PENALTY OF PERJURY I HEREBY ATTEST THAT THE INFORMATION CONTAINED HEREIN IS TRUE AND CORRECT TO THE BEST OF MY KNOWLEDGE

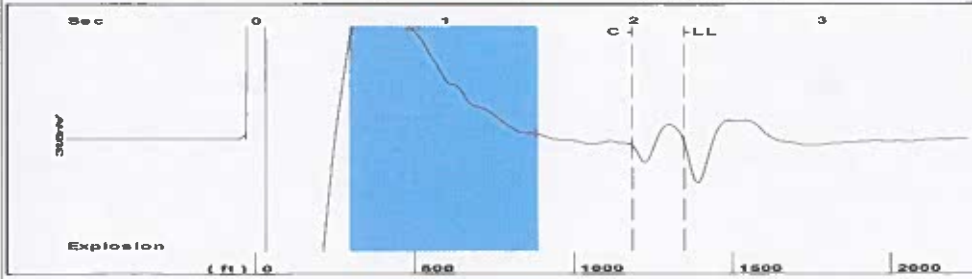
Submitted Electronically

Do NOT Write in This Space - KCC USE ONLY
Date Tested: Results: Date Plugged: Date Repaired: Date Put Back in Service:
Review Completed by: Comments:
TA Approved: Yes Denied Date:

Mail to the Appropriate KCC Conservation Office:

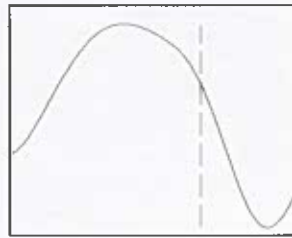
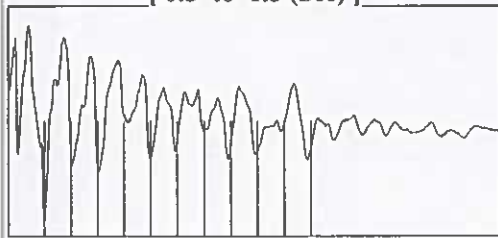
Table with 3 columns: District Office, Address, Phone. Rows for District Office #1, #2, #3, #4.

Group: TA'D WELLS Well: ROWLAND A-1 (acquired on: 05/17/24 12:41:19)



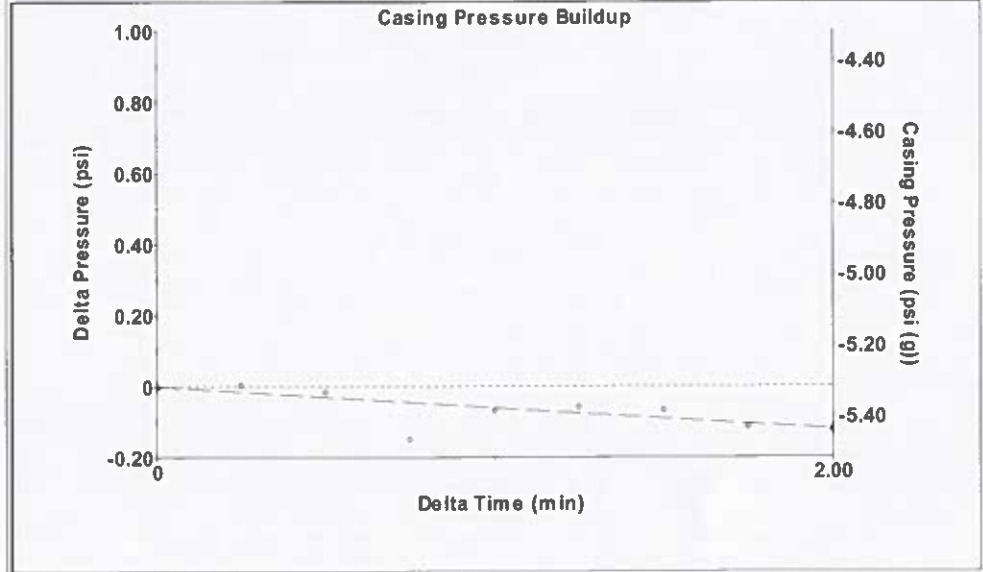
Filter Type High Pass Automatic Collar Count Yes Time 2.271 sec  
 Manual Acoustic Velo 1174.07 ft/s Manual JTS/sec 18.5185 Joints 42.548 Jts  
 Depth 1348.77 ft

[ 0.5 to 1.5 (Sec) ]



Analysis Method: Automatic

Group: TA'D WELLS Well: ROWLAND A-1 (acquired on: 05/17/24 12:41:19)



Change in Pressure -0.12 psi PT10411  
 Change in Time 2.00 min Range 0 - ? psi

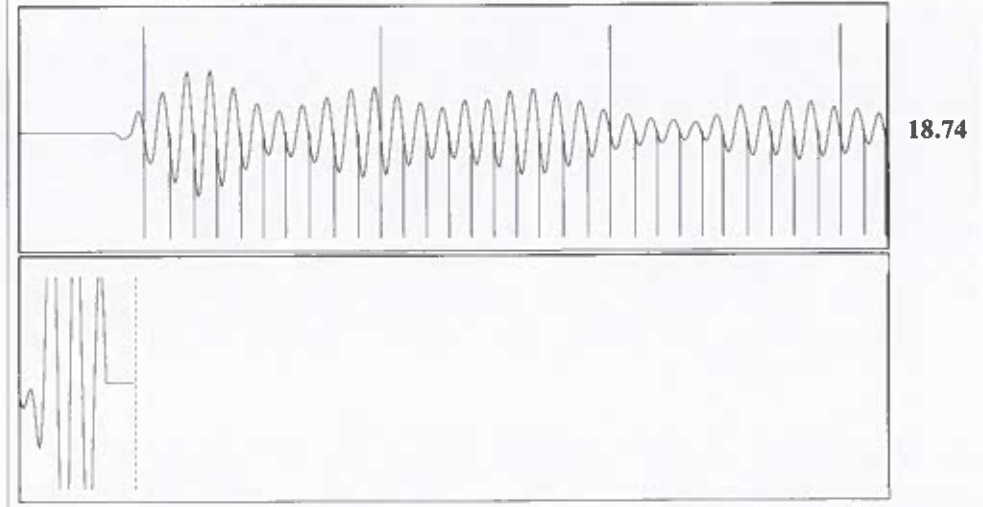
Group: TA'D WELLS Well: ROWLAND A-1 (acquired on: 05/17/24 12:41:19)

<b>Production</b>	<b>Potential</b>	<b>Casing Pressure</b>	<b>Producing</b>
Current		-5.3 psi (g)	
Oil -*- BBL/D		Casing Pressure Buildup	Annular Gas Flow
Water -*- BBL/D		-0.1 psi	0 Mscf/D
Gas -*- Mscf/D		2.00 min	% Liquid
		Gas/Liquid Interface Pressure	100 %
		-5.0 psi (g)	
IPR Method Vogel		Liquid Level Depth	
PBHP/SBHP -*-		1348.77 ft	
Production Efficiency 0.0		Pump Intake Depth	
		2520.00 ft	
Oil 40 deg.API		Formation Depth	
Water 1.05 Sp.Gr.H2O		2559.00 ft	
Gas 0.80 Sp.Gr.AIR			
Acoustic Velocity 1187.82 ft/s			



Formation Submergence  
 Total Gaseous Liquid Column HT (TVD) 1171 ft  
 Equivalent Gas Free Liquid HT (TVD) 1171 ft  
 Acoustic Test  
 Pump Intake 391.7 psi (g)  
 Producing BHP 409.4 psi (g)  
 Static BHP - \* - psi (g)

Group: TA'D WELLS Well: ROWLAND A-1 (acquired on: 05/17/24 12:41:19)



Acoustic Velocity 1187.82 ft/s Joints counted 32  
 Joints Per Second 18.7354 jts/sec Joints to liquid level 42.548  
 Depth to liquid level 1348.77 ft Filter Width 16.5185 20.5185  
 Automatic Collar Count Yes Time to 1st Collar 0.288 1.996

Conservation Division  
District Office No. 1  
210 E. Frontview, Suite A  
Dodge City, KS 67801



Phone: 620-682-7933  
<http://kcc.ks.gov/>

Andrew J. French, Chairperson  
Dwight D. Keen, Commissioner  
Annie Kuether, Commissioner

Laura Kelly, Governor

05/22/2024

Katherine McClurkan  
Merit Energy Company, LLC  
13727 Noel Road, Suite 1200  
DALLAS, TX 75240-7362

Re: Temporary Abandonment  
API 15-129-00468-00-00  
Rowland A 1  
SE/4 Sec.01-35S-41W  
Morton County, Kansas

Dear Katherine McClurkan:

"Your temporary abandonment (TA) application for the well listed above has been approved. In accordance with K.A.R. 82-3-111 the TA status of this well will expire 05/22/2025.

- \* If you return this well to service or plug it, please notify the District Office.
- \* If you sell this well you are required to file a Transfer of Operator form, T-1.
- \* If the well will remain temporarily abandoned, you must submit a new TA application, CP-111, before 05/22/2025.

You may contact me at the number above if you have questions.

Very truly yours,

Michael Maier"