

KANSAS CORPORATION COMMISSION
OIL & GAS CONSERVATION DIVISION

TEMPORARY ABANDONMENT WELL APPLICATION

OPERATOR: License#
Name:
Address 1:
Address 2:
City: State: Zip:
Contact Person:
Phone:
Contact Person Email:
Field Contact Person:
Field Contact Person Phone:

API No. 15-
Spot Description:
Sec. Twp. S. R.
GPS Location: Lat: Long:
Datum: NAD27 NAD83 WGS84
County: Elevation:
Lease Name: Well #:
Well Type: Oil Gas OG WSW Other:
SWD Permit #: ENHR Permit #:
Gas Storage Permit #:
Spud Date: Date Shut-In:

Table with 7 columns: Conductor, Surface, Production, Intermediate, Liner, Tubing. Rows include Size, Setting Depth, Amount of Cement, Top of Cement, Bottom of Cement.

Casing Fluid Level from Surface: How Determined? Date:
Casing Squeeze(s): to w / sacks of cement, to w / sacks of cement. Date:
Do you have a valid Oil & Gas Lease? Yes No
Depth and Type: Junk in Hole at Tools in Hole at Casing Leaks: Yes No Depth of casing leak(s):
Type Completion: ALT. I ALT. II Depth of: DV Tool: w / sacks of cement Port Collar: w / sack of cement
Packer Type: Size: Inch Set at: Feet
Total Depth: Plug Back Depth: Plug Back Method:

Geological Data:

Table with 4 columns: Formation Name, Formation Top, Formation Base, Completion Information. Rows 1 and 2.

UNDER PENALTY OF PERJURY I HEREBY ATTEST THAT THE INFORMATION CONTAINED HEREIN IS TRUE AND CORRECT TO THE BEST OF MY KNOWLEDGE

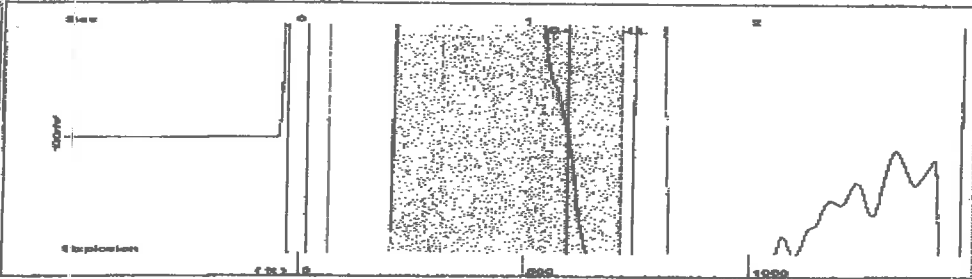
Submitted Electronically

Form with fields: Do NOT Write in This Space - KCC USE ONLY, Date Tested, Results, Date Plugged, Date Repaired, Date Put Back in Service, Review Completed by, Comments, TA Approved: Yes Denied, Date.

Mail to the Appropriate KCC Conservation Office:

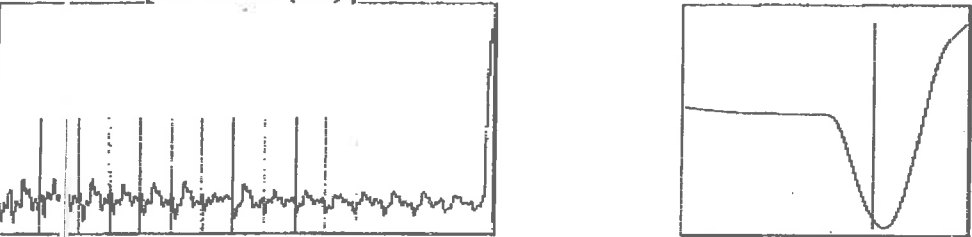
Table with 2 columns: Office Address, Phone. Rows for KCC District Office #1, #2, #3, #4.

Group: Radium Well: GBF #1-12 (acquired on: 05/10/24 16:40:30)



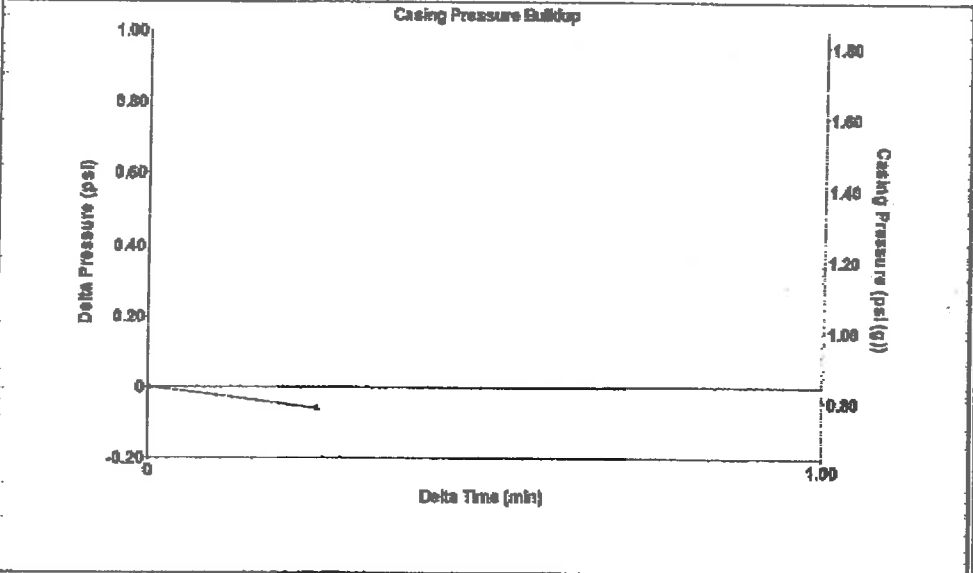
Filter Type High Pass Automatic Collar Count Yes Time 1.418 sec
 Manual Acoustic Velocity 986.984 ft/s Manual JTS/sec 15.873 Joints 23.0195 Jts
 Depth 715.68 ft

[0.4 to 1.4 (Sec)]



Analysis Method: Automatic

Group: Radium Well: GBF #1-12 (acquired on: 05/10/24 16:40:30)

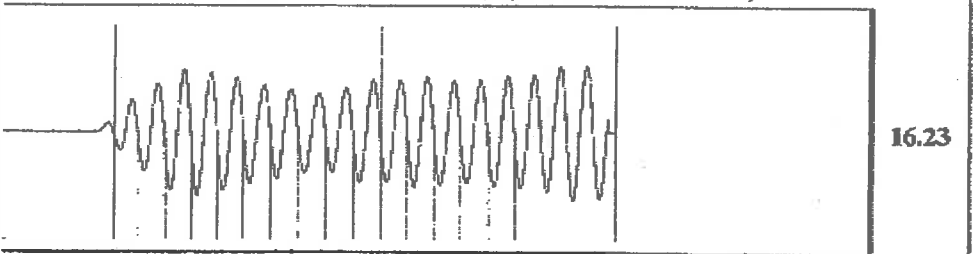


Change in Pressure -0.06 psi PT13440
 Change in Time 0.25 min Range 0 - 2 psi

Group: Radium Well: GBF #1-12 (acquired on: 05/10/24 16:40:30)

Production Current	Potential	Casing Pressure	Producing
Oil -*- BBL/D	-*- BBL/D	0.8 psi (g)	Annular Gas Flow 0 Mscf/D
Water -*- BBL/D	-*- BBL/D	Casing Pressure Buildup -0.1 psi	% Liquid 100 %
Gas -*- Mscf/D	-*- Mscf/D	0.25 min	
IPR Method Vogel		Gas/Liquid Interface Pressure 1.2 psi (g)	
FBHP/PSBHP -*-		Liquid Level Depth 715.68 ft	
Production Efficiency 0.0		Pump Intake Depth 3431.00 ft	
Oil 40 deg.API		Formation Depth 3377.00 ft	
Water 1.05 Sp.Gr.H2O			
Gas 0.95 Sp.Gr.AIR			
Acoustic Velocity 1009.42 ft/s			
Formation Submergence		Pump Intake 897.7 psi (g)	
Total Gaseous Liquid Column HT (TVD) 2715 ft		Producing BHP 881.0 psi (g)	
Equivalent Gas Free Liquid HT (TVD) 2715 ft		Static BHP -*- psi (g)	
Acoustic Test			

Group: Radium Well: GBF #1-12 (acquired on: 05/10/24 16:40:30)



16.23

Acoustic Velocity 1009.42 ft/s Joints counted 15
 Joints Per Second 16.2338 Jts/sec Joints to liquid level 23.0195
 Depth to liquid level 715.676 ft Filter Width 13.873 17.873
 Automatic Collar Count Yes Time to 1st Collar 0.256 1.18

05/22/2024

Loveness Mpanje
F. G. Holl Company L.L.C.
9431 E CENTRAL STE 100
WICHITA, KS 67206-2563

Re: Temporary Abandonment
API 15-009-26096-00-01
G.B.F. 1-12
NW/4 Sec.12-19S-14W
Barton County, Kansas

Dear Loveness Mpanje:

Your application for Temporary Abandonment (TA) for the above-listed well is denied for the following reasons(s):

**High Fluid Level
Lack of Lease**

Pursuant to K.A.R. 82-3-111, the well must be plugged, or returned to service, or obtain temporary abandonment status by 06/21/2024.

This deadline does NOT override any compliance deadline given to you in any Commission Order.

You may contact me if you have any questions.

Sincerely,
RICHARD WILLIAMS
KCC DISTRICT 4