

KANSAS CORPORATION COMMISSION
OIL & GAS CONSERVATION DIVISION

TEMPORARY ABANDONMENT WELL APPLICATION

OPERATOR: License#
Name:
Address 1:
Address 2:
City: State: Zip:
Contact Person:
Phone:
Contact Person Email:
Field Contact Person:
Field Contact Person Phone:

API No. 15-
Spot Description:
Sec. Twp. S. R.
GPS Location: Lat, Long
Datum: NAD27, NAD83, WGS84
County: Elevation:
Lease Name: Well #:
Well Type: Oil, Gas, OG, WSW, Other
SWD Permit #: ENHR Permit #:
Gas Storage Permit #:
Spud Date: Date Shut-In:

Table with 7 columns: Conductor, Surface, Production, Intermediate, Liner, Tubing. Rows include Size, Setting Depth, Amount of Cement, Top of Cement, Bottom of Cement.

Casing Fluid Level from Surface: How Determined? Date:
Casing Squeeze(s): to w / sacks of cement, to w / sacks of cement. Date:
Do you have a valid Oil & Gas Lease? Yes No
Depth and Type: Junk in Hole at Tools in Hole at Casing Leaks: Yes No Depth of casing leak(s):
Type Completion: ALT. I ALT. II Depth of: DV Tool: w / sacks of cement Port Collar: w / sack of cement
Packer Type: Size: Inch Set at: Feet
Total Depth: Plug Back Depth: Plug Back Method:

Geological Date:

Table with 4 columns: Formation Name, Formation Top, Formation Base, Completion Information. Rows 1 and 2.

UNDER PENALTY OF PERJURY I HEREBY ATTEST THAT THE INFORMATION CONTAINED HEREIN IS TRUE AND CORRECT TO THE BEST OF MY KNOWLEDGE

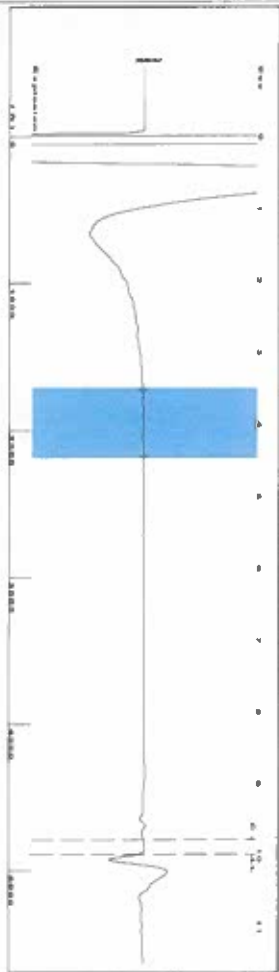
Submitted Electronically

Do NOT Write in This Space - KCC USE ONLY
Date Tested: Results: Date Plugged: Date Repaired: Date Put Back in Service:
Review Completed by: Comments:
TA Approved: Yes Denied Date:

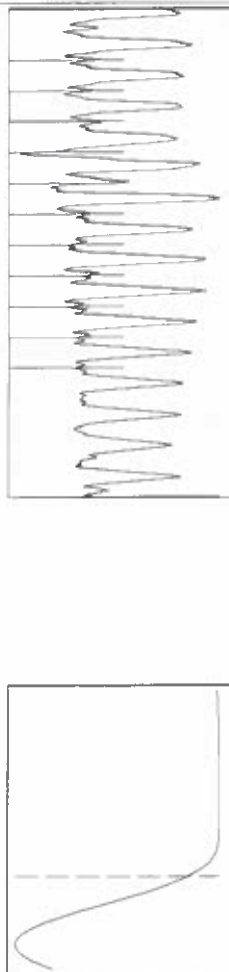
Mail to the Appropriate KCC Conservation Office:

Table with 3 columns: District Office #, Address, Phone. Rows 1-4.

Group: SUBLETTE Well: Williams I-1 (acquired on: 05/22/24 11:07:31)



Filter Type: High Pass
 Manual Acoustic Vel: 1003.16 ft/s
 Automatic Collar Count: Yes
 Manual JTS/sec: 15.8228
 Time: 9.996 sec
 Joints: 154.22 Jts
 Depth: 4888.79 ft

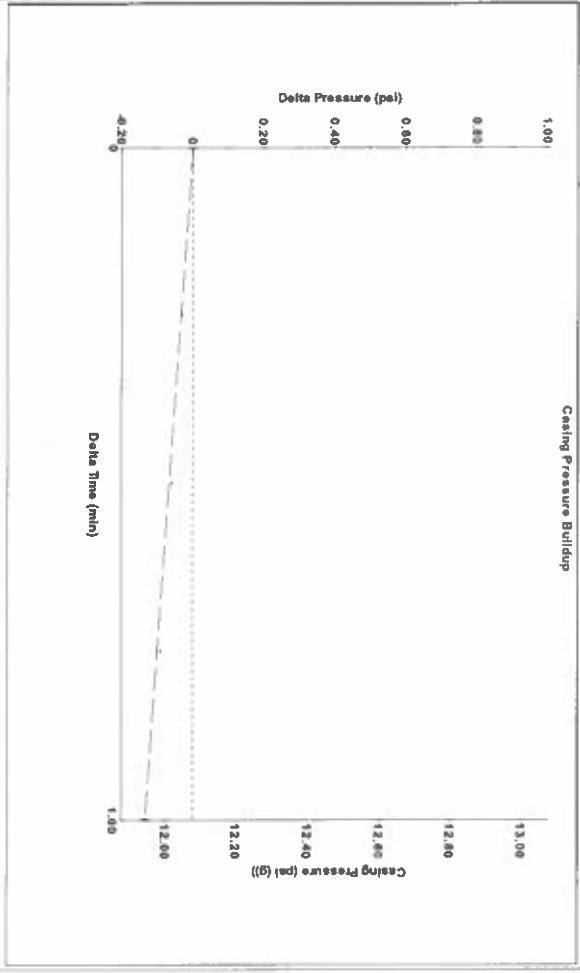


Analysis Method: Automatic

Group: SUBLETTE Well: Williams I-1 (acquired on: 05/22/24 11:07:31)

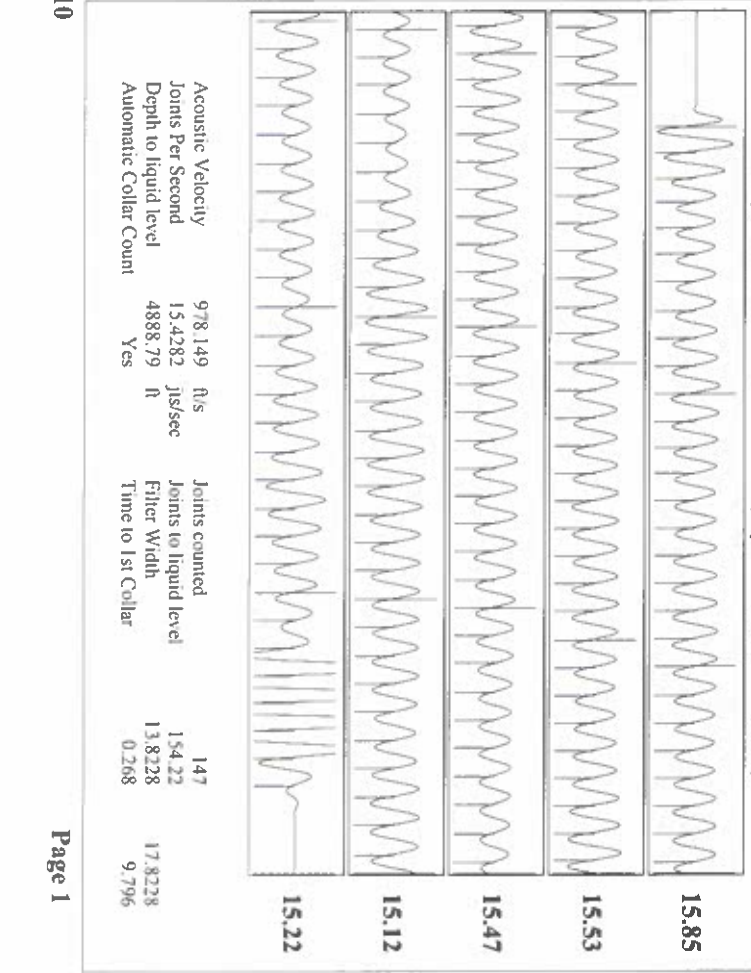
Production	Potential	Casing Pressure	Producing
Current	BB/LD	12.1 psi (g)	Annular
Oil	BB/LD	Casing Pressure Buildup	Gas Flow
Water	BB/LD	-0.133 psi	% Liquid
Gas	Misc/D	1.00 min	100 %
IPR Method	Vogel	Gas/Liquid Interface Pressure	
PBHP/SBHP	0.0	16.8 psi (g)	
Production Efficiency		Liquid Level Depth	
		4888.79 ft	
Oil	deg. API	Pump Intake Depth	
Water	Sp. Gr. H ₂ O	5391.00 ft	
Gas	Sp. Gr. AIR	Formation Depth	
		4796.00 ft	
Acoustic Velocity	978.149 ft/s		
Formation Submergence			
Total Gaseous Liquid Column HT (TVD)	502 ft		
Equivalent Gas Free Liquid HT (TVD)	502 ft		
5/22/24			

Group: SUBLETTE Well: Williams I-1 (acquired on: 05/22/24 11:07:31)



Change in Pressure: -0.133 psi
 Change in Time: 1.00 min
 PT 14679
 Range: 0 - 2 psi

Group: SUBLETTE Well: Williams I-1 (acquired on: 05/22/24 11:07:31)



Acoustic Velocity: 978.149 ft/s
 Joints Per Second: 15.4282 Jts/Sec
 Depth to liquid level: 4888.79 ft
 Automatic Collar Count: Yes

Joints counted: 147
 Joints to liquid level: 154.22
 Filter Width: 13.8228
 Time to 1st Collar: 9.796

Conservation Division
District Office No. 1
210 E. Frontview, Suite A
Dodge City, KS 67801



Phone: 620-682-7933
<http://kcc.ks.gov/>

Andrew J. French, Chairperson
Dwight D. Keen, Commissioner
Annie Kuether, Commissioner

Laura Kelly, Governor

05/23/2024

Katherine McClurkan
Merit Energy Company, LLC
13727 NOEL ROAD, SUITE 1200
DALLAS, TX 75240-7362

Re: Temporary Abandonment
API 15-081-21933-00-01
Williams I-1
SW/4 Sec.07-30S-33W
Haskell County, Kansas

Dear Katherine McClurkan:

"Your temporary abandonment (TA) application for the well listed above has been approved. In accordance with K.A.R. 82-3-111 the TA status of this well will expire 05/23/2025.

- * If you return this well to service or plug it, please notify the District Office.
- * If you sell this well you are required to file a Transfer of Operator form, T-1.
- * If the well will remain temporarily abandoned, you must submit a new TA application, CP-111, before 05/23/2025.

You may contact me at the number above if you have questions.

Very truly yours,

Michael Maier"