

KANSAS CORPORATION COMMISSION
OIL & GAS CONSERVATION DIVISION

TEMPORARY ABANDONMENT WELL APPLICATION

OPERATOR: License#
Name:
Address 1:
Address 2:
City: State: Zip:
Contact Person:
Phone:
Contact Person Email:
Field Contact Person:
Field Contact Person Phone:

API No. 15-
Spot Description:
Sec. Twp. S. R.
GPS Location: Lat: Long:
Datum: NAD27 NAD83 WGS84
County: Elevation:
Lease Name: Well #:
Well Type: Oil Gas OG WSW Other:
SWD Permit #: ENHR Permit #:
Gas Storage Permit #:
Spud Date: Date Shut-In:

Table with 7 columns: Conductor, Surface, Production, Intermediate, Liner, Tubing. Rows include Size, Setting Depth, Amount of Cement, Top of Cement, Bottom of Cement.

Casing Fluid Level from Surface: How Determined? Date:
Casing Squeeze(s): to w / sacks of cement, to w / sacks of cement. Date:
Do you have a valid Oil & Gas Lease? Yes No
Depth and Type: Junk in Hole at Tools in Hole at Casing Leaks: Yes No Depth of casing leak(s):
Type Completion: ALT. I ALT. II Depth of: DV Tool: w / sacks of cement Port Collar: w / sack of cement
Packer Type: Size: Inch Set at: Feet
Total Depth: Plug Back Depth: Plug Back Method:

Geological Data:

Table with 4 columns: Formation Name, Formation Top, Formation Base, Completion Information. Rows 1 and 2.

UNDER PENALTY OF PERJURY I HEREBY ATTEST THAT THE INFORMATION CONTAINED HEREIN IS TRUE AND CORRECT TO THE BEST OF MY KNOWLEDGE

Submitted Electronically

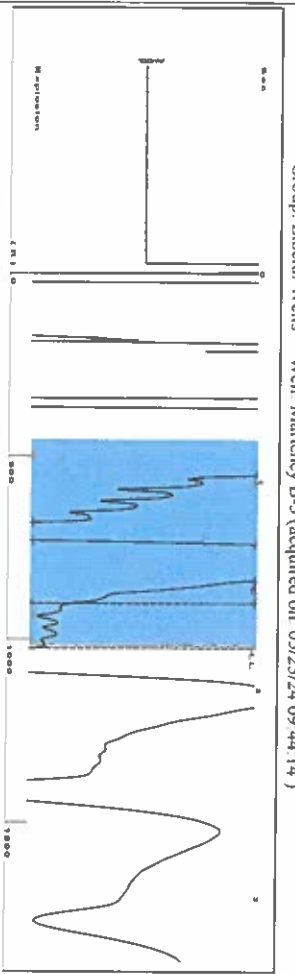
Do NOT Write in This Space - KCC USE ONLY
Date Tested: Results: Date Plugged: Date Repaired: Date Put Back in Service:
Review Completed by: Comments:
TA Approved: Yes Denied Date:

Mail to the Appropriate KCC Conservation Office:

Table with 2 columns: Office Address, Phone. Rows for KCC District Office #1, #2, #3, #4.

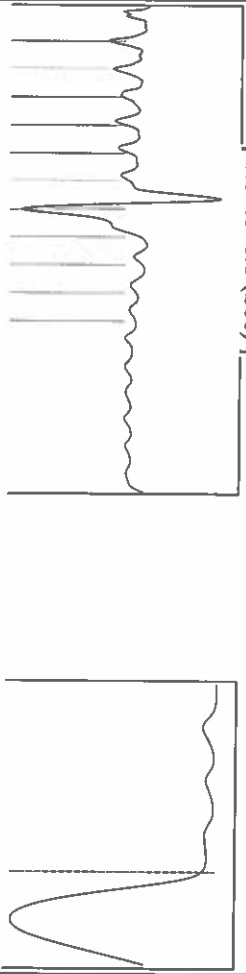


Group: Liberal Wells Well: Marteneq B-3 (acquired on 05/23/24 09:44:14)



Filter Type: High Pass  
 Manual Acoustic Veloc: 1098.79 ft/s  
 Automatic Collar Count: 17.331  
 Manual JTS/sec: 17.331  
 Time: 1803 sec  
 Joints: 32.2925 Jts  
 Depth: 1023.67 ft

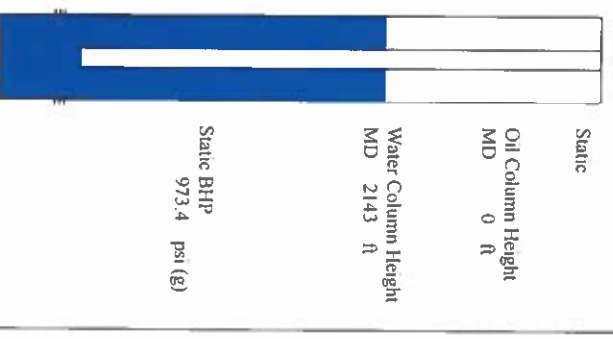
0.8 to 1.8 (Sec)



Analysis Method: Automatic

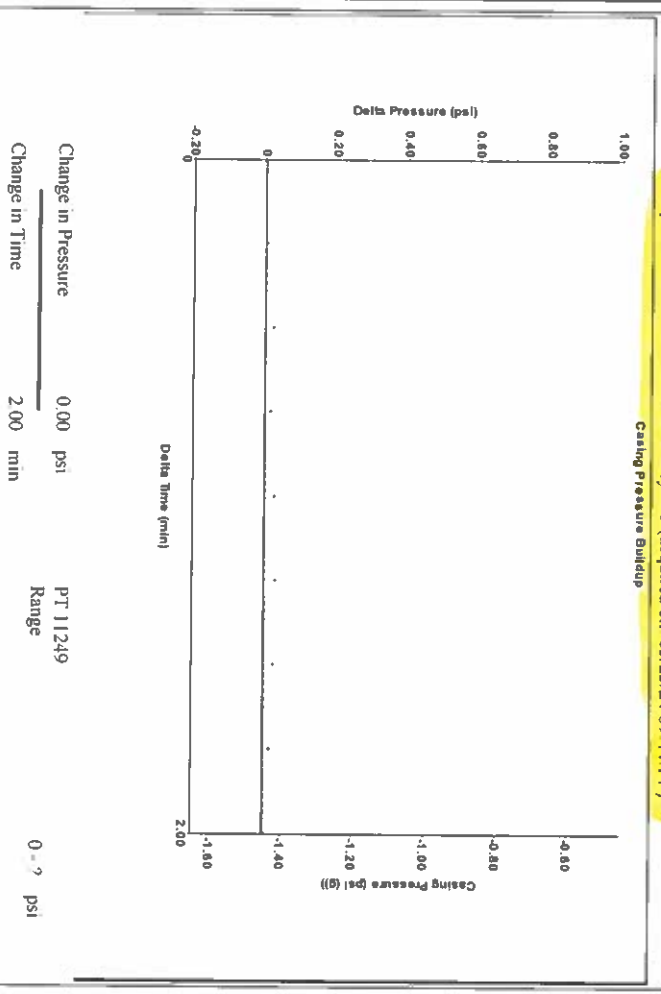
Group: Liberal Wells Well: Marteneq B-3 (acquired on 05/23/24 09:44:14)

Production Current	Potential	Casing Pressure	Static
Oil -*- BBL/D	-*- BBL/D	-1.5 psi (g)	Oil Column Height
Water -*- BBL/D	-*- BBL/D	Casing Pressure Buildup	MD 0 ft
Gas -*- Mscf/D	-*- Mscf/D	0.003 psi	
		2.00 min	
IPR Method	Vogel	Gas/Liquid Interface Pressure	
PBHP/SBHP	-*-	-1.1 psi (g)	
Production Efficiency	0.0		
Oil 40 deg API		Liquid Level Depth	Water Column Height
Water 1.05 Sp.Gr H2O		1023.67 ft	MD 2143 ft
Gas 0.84 Sp.Gr AIR		Pump Intake Depth	
		3030.00 ft	
Acoustic Velocity	1135.52 ft/s	Formation Depth	
		3167.00 ft	



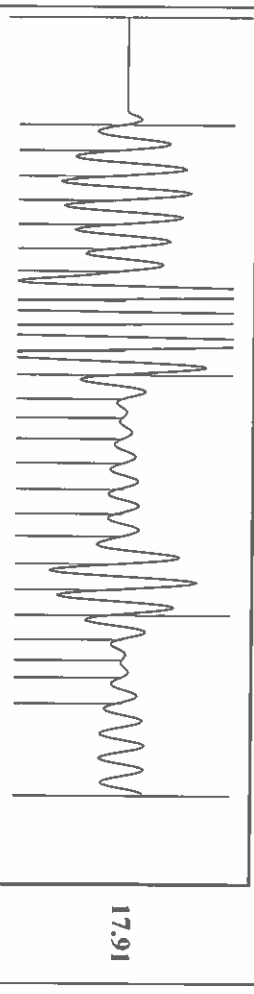
Shot @ 400# JTK

Group: Liberal Wells Well: Marteneq B-3 (acquired on 05/23/24 09:44:14)



Change in Pressure: 0.00 psi  
 Change in Time: 2.00 min  
 PT 11249  
 Range  
 0 - ? psi

Group: Liberal Wells Well: Marteneq B-3 (acquired on 05/23/24 09:44:14)



17.91

Acoustic Velocity	1135.52 ft/s	Joints counted	24
Joints Per Second	17.9104 Jts/sec	Joints to liquid level	32.2925
Depth to liquid level	1023.67 ft	Filter Width	15.331
Automatic Collar Count	Yes	Time to 1st Collar	0.248
			19.331
			1.588

Conservation Division  
District Office No. 1  
210 E. Frontview, Suite A  
Dodge City, KS 67801



Phone: 620-682-7933  
<http://kcc.ks.gov/>

Andrew J. French, Chairperson  
Dwight D. Keen, Commissioner  
Annie Kuether, Commissioner

Laura Kelly, Governor

05/24/2024

Katherine McClurkan  
Merit Energy Company, LLC  
13727 NOEL ROAD, SUITE 1200  
DALLAS, TX 75240-7362

Re: Temporary Abandonment  
API 15-175-22025-00-00  
MARTENEY B 3  
NW/4 Sec.19-32S-34W  
Seward County, Kansas

Dear Katherine McClurkan:

"Your temporary abandonment (TA) application for the well listed above has been approved. In accordance with K.A.R. 82-3-111 the TA status of this well will expire 05/24/2025.

- \* If you return this well to service or plug it, please notify the District Office.
- \* If you sell this well you are required to file a Transfer of Operator form, T-1.
- \* If the well will remain temporarily abandoned, you must submit a new TA application, CP-111, before 05/24/2025.

You may contact me at the number above if you have questions.

Very truly yours,

Michael Maier"