

KANSAS CORPORATION COMMISSION
OIL & GAS CONSERVATION DIVISION

TEMPORARY ABANDONMENT WELL APPLICATION

OPERATOR: License#
Name:
Address 1:
Address 2:
City: State: Zip:
Contact Person:
Phone:
Contact Person Email:
Field Contact Person:
Field Contact Person Phone:

API No. 15-
Spot Description:
Sec. Twp. S. R.
GPS Location: Lat: Long:
Datum: NAD27 NAD83 WGS84
County: Elevation:
Lease Name: Well #:
Well Type: Oil Gas OG WSW Other:
SWD Permit #: ENHR Permit #:
Gas Storage Permit #:
Spud Date: Date Shut-In:

Table with 7 columns: Conductor, Surface, Production, Intermediate, Liner, Tubing. Rows include Size, Setting Depth, Amount of Cement, Top of Cement, Bottom of Cement.

Casing Fluid Level from Surface: How Determined? Date:
Casing Squeeze(s): to w / sacks of cement, to w / sacks of cement. Date:
Do you have a valid Oil & Gas Lease? Yes No
Depth and Type: Junk in Hole at Tools in Hole at Casing Leaks: Yes No Depth of casing leak(s):
Type Completion: ALT. I ALT. II Depth of: DV Tool: w / sacks of cement Port Collar: w / sack of cement
Packer Type: Size: Inch Set at: Feet
Total Depth: Plug Back Depth: Plug Back Method:

Geological Data:

Table with 4 columns: Formation Name, Formation Top, Formation Base, Completion Information. Rows 1 and 2.

UNDER PENALTY OF PERJURY I HEREBY ATTEST THAT THE INFORMATION CONTAINED HEREIN IS TRUE AND CORRECT TO THE BEST OF MY KNOWLEDGE

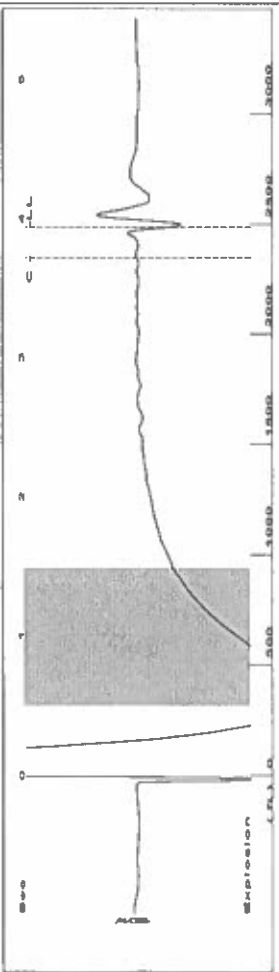
Submitted Electronically

Do NOT Write in This Space - KCC USE ONLY
Date Tested: Results: Date Plugged: Date Repaired: Date Put Back in Service:
Review Completed by: Comments:
TA Approved: Yes Denied Date:

Mail to the Appropriate KCC Conservation Office:

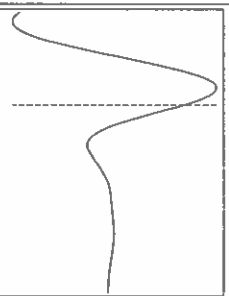
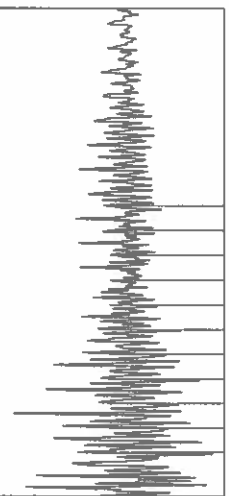
Table with 3 columns: District Office, Address, Phone. Rows for District Office #1, #2, #3, #4.

Group: TAD Well: parker a-2 (acquired on: 05/21/24 11:16:46)



Filter Type High Pass Automatic Collar Count Yes
 Manual Acoustic Veloc 252.96 ft/s Manual JTS/sec 19.7628
 Time 3.939 sec
 Joints 78.3711 Jts
 Depth 2484.36 ft

[0.5 to 1.5 (Sec)]



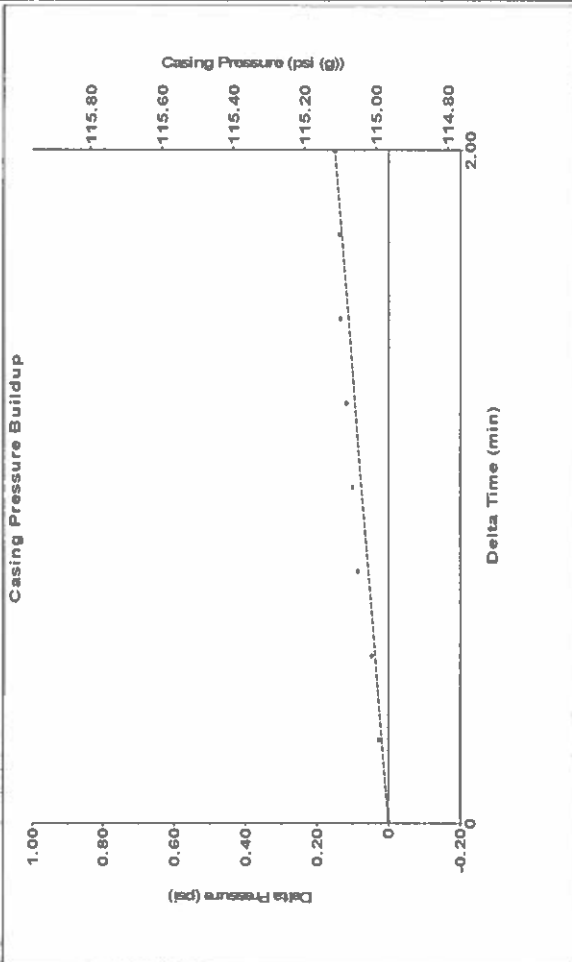
Analysis Method: Automatic

Group: TAD Well: parker a-2 (acquired on: 05/21/24 11:16:46)

Production	Potential	Casing Pressure	115.0 psi (g)
Current	Oil - * - BBL/D	Casing Pressure Buildup	0.150 psi
Water - * - BBL/D	Gas - * - Mscf/D	Gas/Liquid Interface Pressure	123.2 psi (g)
Gas - * - Mscf/D	IPR Method	Liquid Level Depth	2484.36 ft
	PBHP/SBHP	Pump Intake Depth	2636.00 ft
	Production Efficiency	Formation Depth	2482.00 ft
	Oil 40 deg API		
	Water 1.05 Sp Gr H2O		
	Gas 0.73 Sp Gr AIR		
Acoustic Velocity	1261.42 ft/s		
Formation Submergence	152 ft		
Total Gaseous Liquid Column HT (TVD)	152 ft		
Equivalent Gas Free Liquid HT (TVD)			
Acoustic Test			

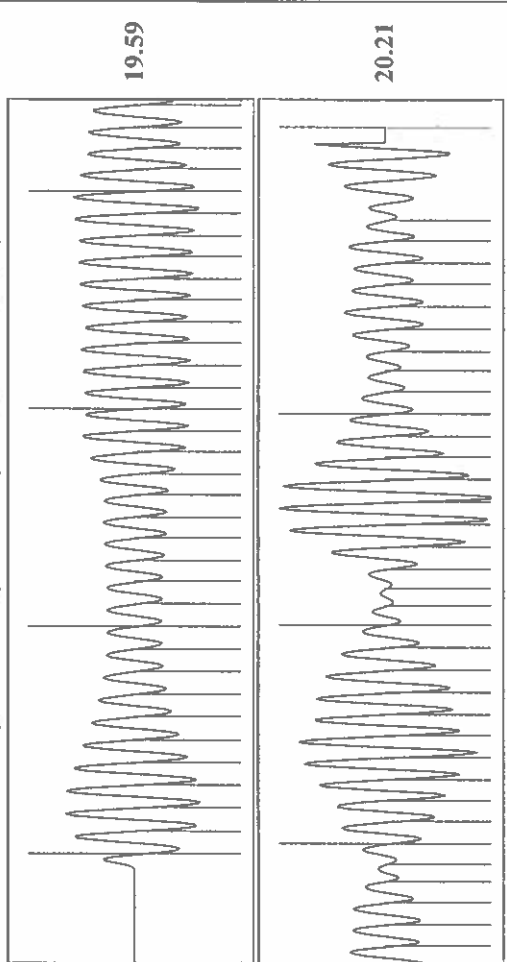
Producing	Annular Gas Flow	2 Mscf/D
	% Liquid	100 %
Pump Intake	174.1 psi (g)	
Producing BHP	123.2 psi (g)	
Static BHP	- * - psi (g)	

Group: TAD Well: parker a-2 (acquired on: 05/21/24 11:16:46)



Change in Pressure 0.15 psi PT 14654 Range
 Change in Time 2.00 min

Group: TAD Well: parker a-2 (acquired on: 05/21/24 11:16:46)



Acoustic Velocity	1261.42 ft/s	Joints counted	69
Joints Per Second	19.8962 jts/sec	Joints to liquid level	78.3711
Depth to liquid level	2484.36 ft	Filter Width	21.7628
Automatic Collar Count	Yes	Time to 1st Collar	0.252 3.72

Conservation Division
District Office No. 1
210 E. Frontview, Suite A
Dodge City, KS 67801



Phone: 620-682-7933
<http://kcc.ks.gov/>

Andrew J. French, Chairperson
Dwight D. Keen, Commissioner
Annie Kuether, Commissioner

Laura Kelly, Governor

05/29/2024

Katherine McClurkan
Merit Energy Company, LLC
13727 Noel Road, Suite 1200
Dallas, TX 75240-7362

Re: Temporary Abandonment
API 15-093-21177-00-00
Parker A 2
SW/4 Sec.34-23S-35W
Kearny County, Kansas

Dear Katherine McClurkan:

"Your temporary abandonment (TA) application for the well listed above has been approved. In accordance with K.A.R. 82-3-111 the TA status of this well will expire 05/29/2025.

- * If you return this well to service or plug it, please notify the District Office.
- * If you sell this well you are required to file a Transfer of Operator form, T-1.
- * If the well will remain temporarily abandoned, you must submit a new TA application, CP-111, before 05/29/2025.

You may contact me at the number above if you have questions.

Very truly yours,

Michael Maier"