

KANSAS CORPORATION COMMISSION
OIL & GAS CONSERVATION DIVISION

TEMPORARY ABANDONMENT WELL APPLICATION

OPERATOR: License#
Name:
Address 1:
Address 2:
City: State: Zip:
Contact Person:
Phone:
Contact Person Email:
Field Contact Person:
Field Contact Person Phone:

API No. 15-
Spot Description:
Sec. Twp. S. R.
feet from N / S Line of Section
feet from E / W Line of Section
GPS Location: Lat: , Long:
Datum: NAD27 NAD83 WGS84
County: Elevation: GL KB
Lease Name: Well #:
Well Type: Oil Gas OG WSW Other:
SWD Permit #: ENHR Permit #:
Gas Storage Permit #:
Spud Date: Date Shut-In:

Table with 7 columns: Conductor, Surface, Production, Intermediate, Liner, Tubing. Rows include Size, Setting Depth, Amount of Cement, Top of Cement, Bottom of Cement.

Casing Fluid Level from Surface: How Determined? Date:
Casing Squeeze(s): to w / sacks of cement, to w / sacks of cement. Date:
Do you have a valid Oil & Gas Lease? Yes No
Depth and Type: Junk in Hole at Tools in Hole at Casing Leaks: Yes No Depth of casing leak(s):
Type Completion: ALT. I ALT. II Depth of: DV Tool: w / sacks of cement Port Collar: w / sack of cement
Packer Type: Size: Inch Set at: Feet
Total Depth: Plug Back Depth: Plug Back Method:

Geological Date:

Table with 4 columns: Formation Name, Formation Top, Formation Base, Completion Information. Rows 1 and 2.

UNDER PENALTY OF PERJURY I HEREBY ATTEST THAT THE INFORMATION CONTAINED HEREIN IS TRUE AND CORRECT TO THE BEST OF MY KNOWLEDGE

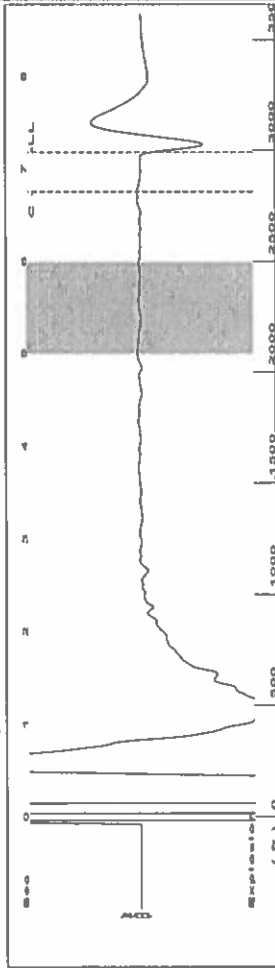
Submitted Electronically

Do NOT Write in This Space - KCC USE ONLY
Date Tested: Results: Date Plugged: Date Repaired: Date Put Back in Service:
Review Completed by: Comments:
TA Approved: Yes Denied Date:

Mail to the Appropriate KCC Conservation Office:

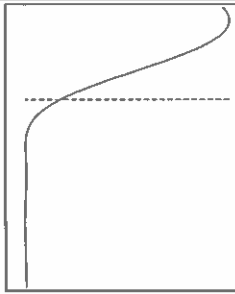
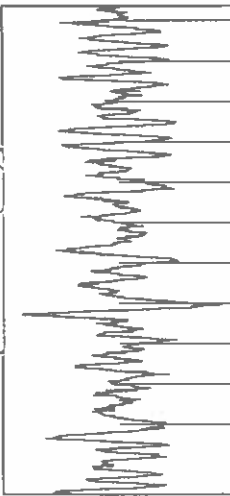
Table with 3 columns: District Office #, Address, Phone. Rows 1-4.

Group: Route 2 Well: Shell B-7 (acquired on: 05/07/24 13:52:20)

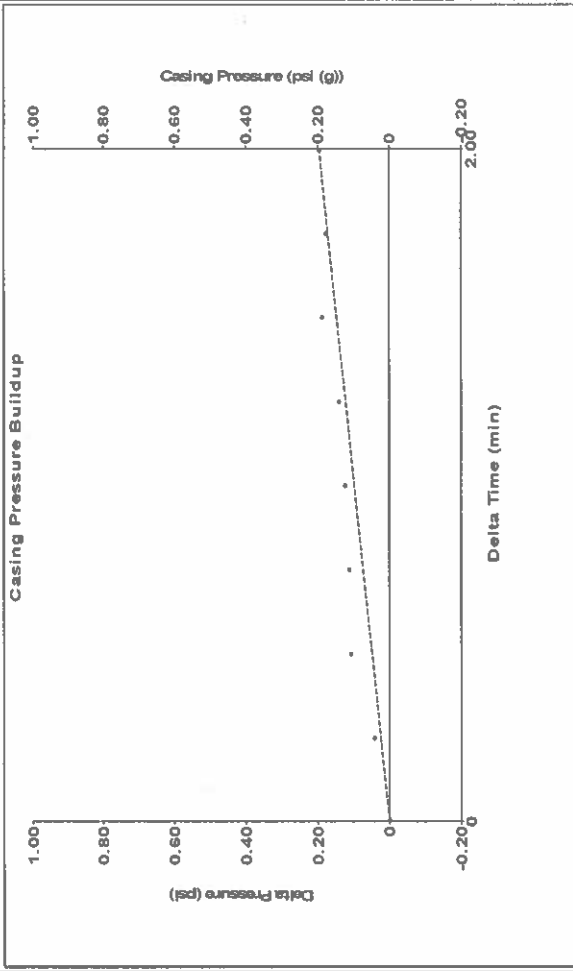


Filter Type High Pass Automatic Collar Count Yes Time 7.175 sec
 Manual Acoustic Veloc 792.754 ft/s Manual JTS/sec 12.0773 Jts
 Depth 2989.11 ft

[5.0 to 6.0 (Sec)]



Group: Route 2 Well: Shell B-7 (acquired on: 05/07/24 13:52:20)



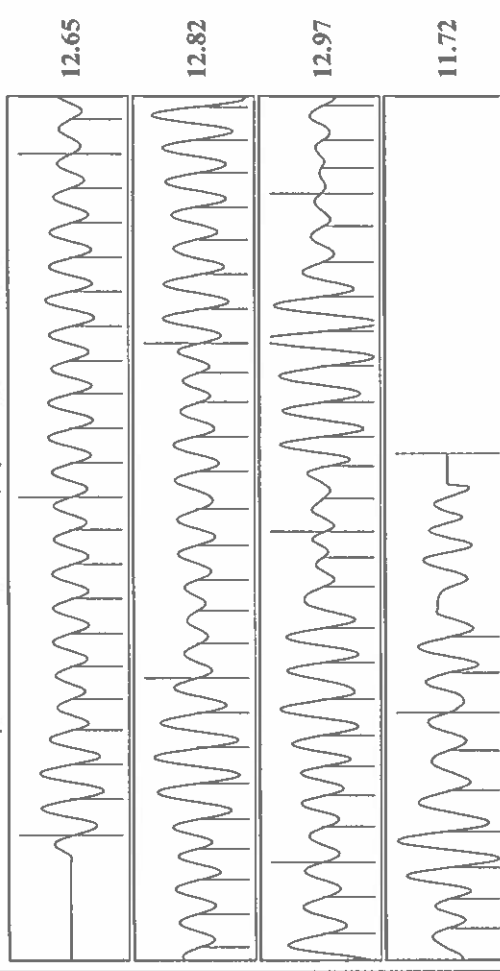
Change in Pressure 0.20 psi PT 14654 Range
 Change in Time 2.00 min

Analysis Method: Automatic

Group: Route 2 Well: Shell B-7 (acquired on: 05/07/24 13:52:20)

Production	Potential	Casing Pressure	0.0 psi (g)
Oil	BBL/D	Casing Pressure Buildup	0.195 psi
Water	BBL/D	Gas Flow	2 Mscf/D
Gas	Mscf/D	% Liquid	88 %
IPR Method	Vogel	Gas/Liquid Interface Pressure	1.8 psi (g)
PBHP/SBHP	0.0	Liquid Level Depth	2989.11 ft
Production Efficiency		Pump Intake Depth	4629.00 ft
Oil	40 deg API	Formation Depth	4525.00 ft
Water	1.05 Sp.Gr.H2O		
Gas	1.13 Sp.Gr.AIR		
Acoustic Velocity	833.201 ft/s		
Formation Submergence			
Total Gaseous Liquid Column HT (TVD)	1640 ft		
Equivalent Gas Free Liquid HT (TVD)	1455 ft		
Acoustic Test			

Group: Route 2 Well: Shell B-7 (acquired on: 05/07/24 13:52:20)



Acoustic Velocity 833.201 ft/s Joints counted 82
 Joints Per Second 12.6935 jts/sec Joints to liquid level 91.0759
 Depth to liquid level 2989.11 ft Filter Width 10.0773
 Automatic Collar Count Yes Time to 1st Collar 0.288 6.748

Conservation Division
District Office No. 1
210 E. Frontview, Suite A
Dodge City, KS 67801



Phone: 620-682-7933
<http://kcc.ks.gov/>

Andrew J. French, Chairperson
Dwight D. Keen, Commissioner
Annie Kuether, Commissioner

Laura Kelly, Governor

05/29/2024

Katherine McClurkan
Merit Energy Company, LLC
13727 Noel Road, Suite 1200
Dallas, TX 75240-7362

Re: Temporary Abandonment
API 15-055-22332-00-02
Shell B 7
NW/4 Sec.17-22S-34W
Finney County, Kansas

Dear Katherine McClurkan:

"Your temporary abandonment (TA) application for the well listed above has been approved. In accordance with K.A.R. 82-3-111 the TA status of this well will expire 05/29/2025.

- * If you return this well to service or plug it, please notify the District Office.
- * If you sell this well you are required to file a Transfer of Operator form, T-1.
- * If the well will remain temporarily abandoned, you must submit a new TA application, CP-111, before 05/29/2025.

You may contact me at the number above if you have questions.

Very truly yours,

Michael Maier"