

KANSAS CORPORATION COMMISSION
OIL & GAS CONSERVATION DIVISION

TEMPORARY ABANDONMENT WELL APPLICATION

OPERATOR: License#
Name:
Address 1:
Address 2:
City: State: Zip:
Contact Person:
Phone:
Contact Person Email:
Field Contact Person:
Field Contact Person Phone:

API No. 15-
Spot Description:
Sec. Twp. S. R.
GPS Location: Lat: Long:
Datum: NAD27 NAD83 WGS84
County: Elevation:
Lease Name: Well #:
Well Type: Oil Gas OG WSW Other:
SWD Permit #: ENHR Permit #:
Gas Storage Permit #:
Spud Date: Date Shut-In:

Table with 7 columns: Conductor, Surface, Production, Intermediate, Liner, Tubing. Rows include Size, Setting Depth, Amount of Cement, Top of Cement, Bottom of Cement.

Casing Fluid Level from Surface: How Determined? Date:
Casing Squeeze(s): to w / sacks of cement, to w / sacks of cement. Date:
Do you have a valid Oil & Gas Lease? Yes No
Depth and Type: Junk in Hole at Tools in Hole at Casing Leaks: Yes No Depth of casing leak(s):
Type Completion: ALT. I ALT. II Depth of: DV Tool: w / sacks of cement Port Collar: w / sack of cement
Packer Type: Size: Inch Set at: Feet
Total Depth: Plug Back Depth: Plug Back Method:

Geological Data:

Table with 4 columns: Formation Name, Formation Top, Formation Base, Completion Information. Rows 1 and 2.

UNDER PENALTY OF PERJURY I HEREBY ATTEST THAT THE INFORMATION CONTAINED HEREIN IS TRUE AND CORRECT TO THE BEST OF MY KNOWLEDGE

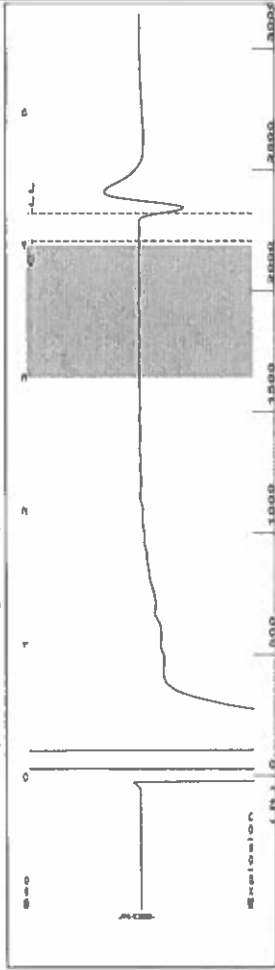
Submitted Electronically

Do NOT Write in This Space - KCC USE ONLY
Date Tested: Results: Date Plugged: Date Repaired: Date Put Back in Service:
Review Completed by: Comments:
TA Approved: Yes Denied Date:

Mail to the Appropriate KCC Conservation Office:

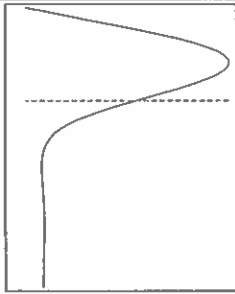
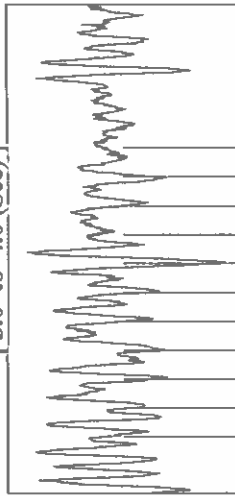
Table with 2 columns: Office Address, Phone. Rows for District Office #1, #2, #3, #4.

Group: TAD Well: garden city L-5 (acquired on: 05/08/24 13:27:05)



Filter Type High Pass Automatic Collar Count Yes Time 4.237 sec  
 Manual Acoustic Veloc 1067.34 ft/s Manual JTS/sec 16.835 Joints 73.246  
 Depth 2321.90 ft

[ 3.0 to 4.0 (Sec) ]



**Analysis Method: Automatic**

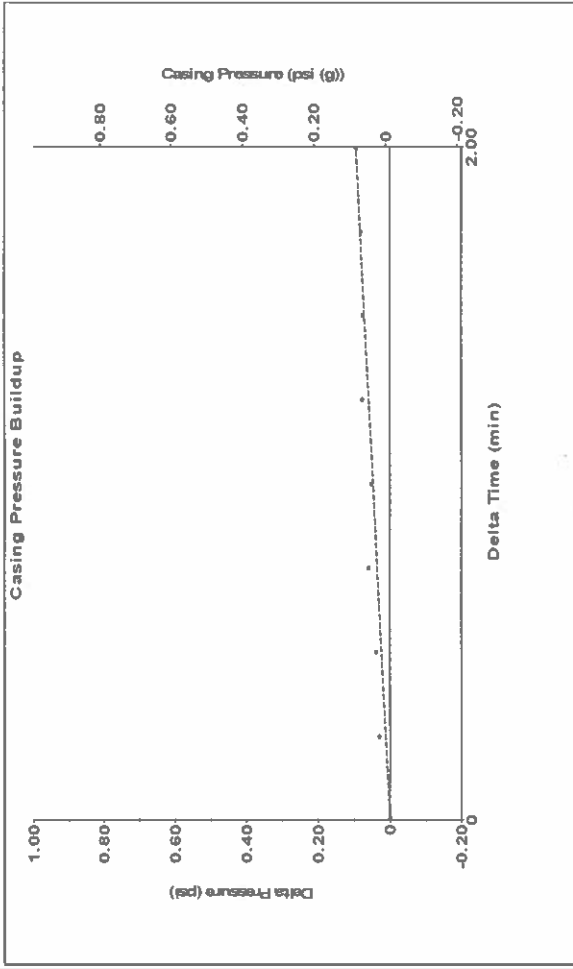
Group: TAD Well: garden city L-5 (acquired on: 05/08/24 13:27:05)

Production	Potential	Casing Pressure	-0.0 psi (g)
Oil	BB/L/D	Casing Pressure Buildup	0.095 psi
Water	BB/L/D		2.00 min
Gas	BB/L/D	Gas/Liquid Interface Pressure	1.1 psi (g)
IPR Method	Vogel		
PBHP/SBHP	0.0		
Production Efficiency			
Oil	40 deg-API	Liquid Level Depth	2321.90 ft
Water	1.05 Sp.Gr H2O	Pump Intake Depth	4750.00 ft
Gas	0.88 Sp.Gr AIR	Formation Depth	4800.00 ft
Acoustic Velocity	1096.01 ft/s		
Formation Submergence			
Total Gaseous Liquid Column HT (TVD)	2428 ft		
Equivalent Gas Free Liquid HT (TVD)	2336 ft		
Acoustic Test			

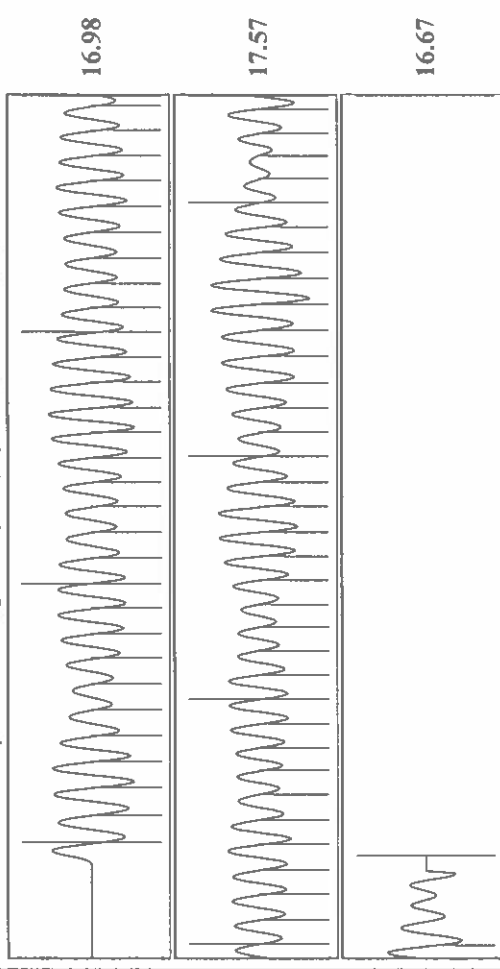
Producing	Annular Gas Flow	1 Mscf/D	96 %
Pump Intake	776.8 psi (g)		
Producing BHP	798.9 psi (g)		
Static BHP	- - - psi (g)		

Group: TAD Well: garden city L-5 (acquired on: 05/08/24 13:27:05)



Change in Pressure 0.09 psi PT 14654 Range  
 Change in Time 2.00 min

Group: TAD Well: garden city L-5 (acquired on: 05/08/24 13:27:05)



Acoustic Velocity 1096.01 ft/s Joints counted 65  
 Joints Per Second 17.2872 JTS/sec Joints to liquid level 73.246  
 Depth to liquid level 2321.9 ft Filter Width 18.835  
 Automatic Collar Count Yes Time to 1st Collar 4.028

Conservation Division  
District Office No. 1  
210 E. Frontview, Suite A  
Dodge City, KS 67801



Phone: 620-682-7933  
<http://kcc.ks.gov/>

Andrew J. French, Chairperson  
Dwight D. Keen, Commissioner  
Annie Kuether, Commissioner

Laura Kelly, Governor

05/29/2024

Katherine McClurkan  
Merit Energy Company, LLC  
13727 Noel Road, Suite 1200  
Dallas, TX 75240

Re: Temporary Abandonment  
API 15-055-21314-00-01  
Garden City L 5  
NE/4 Sec.34-23S-34W  
Finney County, Kansas

Dear Katherine McClurkan:

"Your temporary abandonment (TA) application for the well listed above has been approved. In accordance with K.A.R. 82-3-111 the TA status of this well will expire 05/29/2025.

- \* If you return this well to service or plug it, please notify the District Office.
- \* If you sell this well you are required to file a Transfer of Operator form, T-1.
- \* If the well will remain temporarily abandoned, you must submit a new TA application, CP-111, before 05/29/2025.

You may contact me at the number above if you have questions.

Very truly yours,

Michael Maier"