

KANSAS CORPORATION COMMISSION
OIL & GAS CONSERVATION DIVISION

TEMPORARY ABANDONMENT WELL APPLICATION

OPERATOR: License#
Name:
Address 1:
Address 2:
City: State: Zip:
Contact Person:
Phone:
Contact Person Email:
Field Contact Person:
Field Contact Person Phone:

API No. 15-
Spot Description:
Sec. Twp. S. R.
GPS Location: Lat: Long:
Datum: NAD27 NAD83 WGS84
County: Elevation:
Lease Name: Well #:
Well Type: Oil Gas OG WSW Other:
SWD Permit #: ENHR Permit #:
Gas Storage Permit #:
Spud Date: Date Shut-In:

Table with 7 columns: Conductor, Surface, Production, Intermediate, Liner, Tubing. Rows include Size, Setting Depth, Amount of Cement, Top of Cement, Bottom of Cement.

Casing Fluid Level from Surface: How Determined? Date:
Casing Squeeze(s): to w / sacks of cement, to w / sacks of cement. Date:
Do you have a valid Oil & Gas Lease? Yes No
Depth and Type: Junk in Hole at Tools in Hole at Casing Leaks: Yes No Depth of casing leak(s):
Type Completion: ALT. I ALT. II Depth of: DV Tool: w / sacks of cement Port Collar: w / sack of cement
Packer Type: Size: Inch Set at: Feet
Total Depth: Plug Back Depth: Plug Back Method:

Geological Data:

Table with 4 columns: Formation Name, Formation Top, Formation Base, Completion Information. Rows 1 and 2.

UNDER PENALTY OF PERJURY I HEREBY ATTEST THAT THE INFORMATION CONTAINED HEREIN IS TRUE AND CORRECT TO THE BEST OF MY KNOWLEDGE

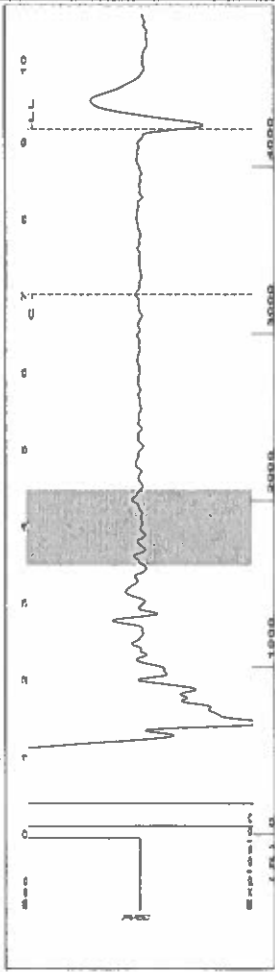
Submitted Electronically

Do NOT Write in This Space - KCC USE ONLY
Date Tested: Results: Date Plugged: Date Repaired: Date Put Back in Service:
Review Completed by: Comments:
TA Approved: Yes Denied Date:

Mail to the Appropriate KCC Conservation Office:

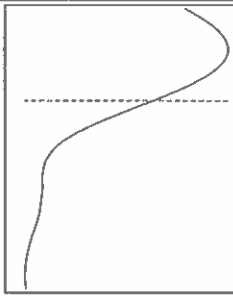
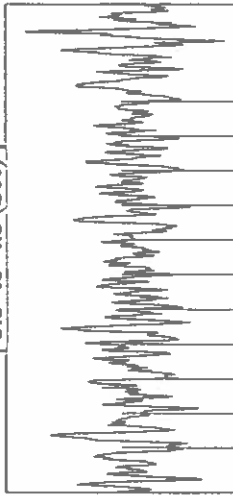
Table with 2 columns: Office Address, Phone. Rows for District Office #1, #2, #3, #4.

Group: SMU FLOOD Well: SMU 102 (acquired on: 05/22/24 15:51:34)

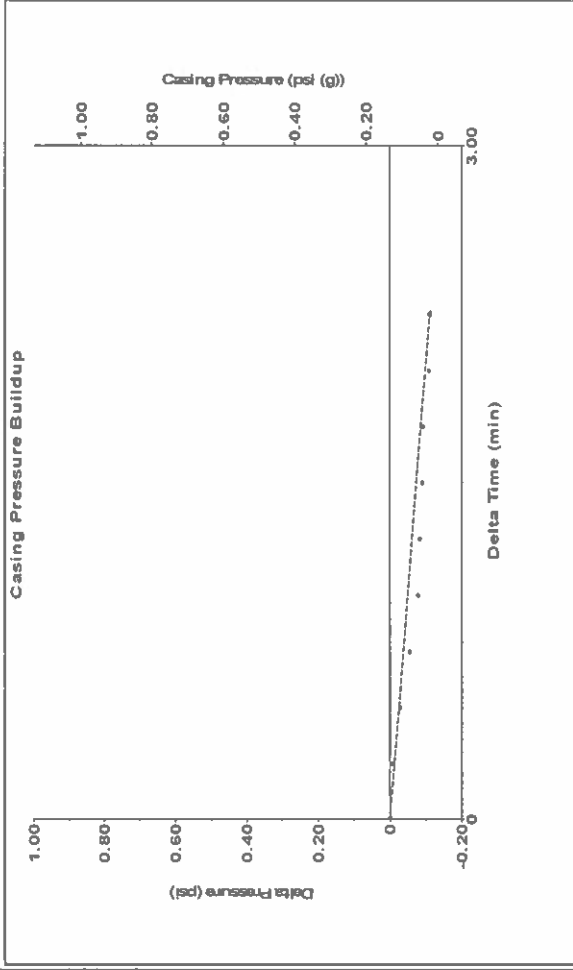


Filter Type High Pass Automatic Collar Count Yes Time 9.166 sec  
 Manual Acoustic Velocity 919.07 ft/s Manual JTS/sec 14.0845 Joints 129.393 Jts  
 Depth 4221.69 ft

[ 3.5 to 4.5 (Sec) ]



Group: SMU FLOOD Well: SMU 102 (acquired on: 05/22/24 15:51:34)



Change in Pressure -0.11 psi PT 14654 Range  
 Change in Time 2.25 min

**Analysis Method: Automatic**

Group: SMU FLOOD Well: SMU 102 (acquired on: 05/22/24 15:51:34)

Production	Potential	Casing Pressure	0.1 psi (g)
Oil -*-	BBL/D	Casing Pressure Buildup	-0.110 psi
Water -*-	BBL/D	Gas/Liquid Interface Pressure	2.25 min
Gas -*-	Mscf/D		2.5 psi (g)
IPR Method	Vogel	Liquid Level Depth	4221.69 ft
PBHP/SBHP	-*-	Pump Intake Depth	4731.00 ft
Production Efficiency	0.0	Formation Depth	4731.00 ft
Oil 40 deg API			
Water 1.05 Sp Gr H2O			
Gas 1.06 Sp.Gr.AIR			
Acoustic Velocity	921.163 ft/s		
Formation Submergence			
Total Gaseous Liquid Column HT (TVD)	509 ft		
Equivalent Gas Free Liquid HT (TVD)	509 ft		
Acoustic Test			

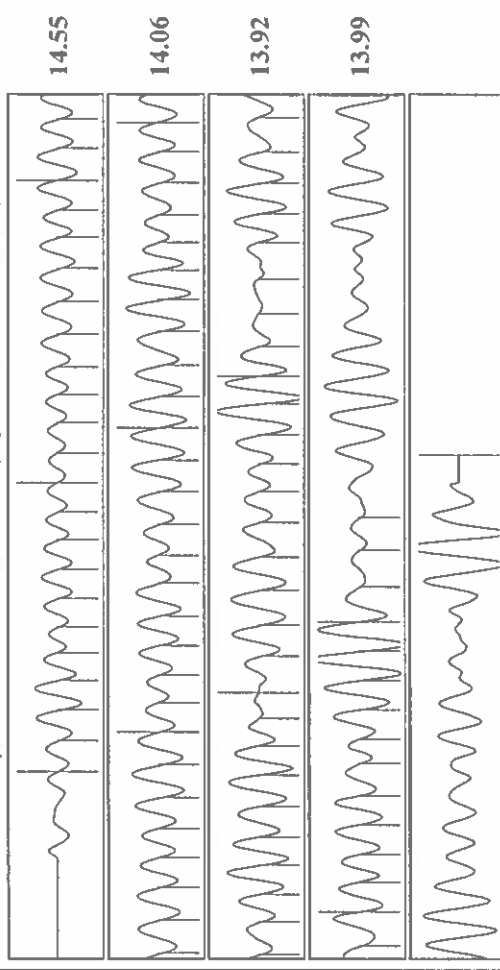
  

Producing	Annular	Pump Intake	176.8 psi (g)
Gas Flow	0 Mscf/D	Producing BHP	176.8 psi (g)
% Liquid	100 %	Static BHP	-* - psi (g)

Acoustic Velocity	921.163 ft/s	Joints counted	93
Joints Per Second	14.1166 jts/sec	Joints to liquid level	129.393
Depth to liquid level	4221.69 ft	Filter Width	16.0845
Automatic Collar Count	Yes	Time to 1st Collar	7.02

Group: SMU FLOOD Well: SMU 102 (acquired on: 05/22/24 15:51:34)



Acoustic Velocity 921.163 ft/s Joints counted 93  
 Joints Per Second 14.1166 jts/sec Joints to liquid level 129.393  
 Depth to liquid level 4221.69 ft Filter Width 16.0845  
 Automatic Collar Count Yes Time to 1st Collar 7.02

Conservation Division  
District Office No. 1  
210 E. Frontview, Suite A  
Dodge City, KS 67801



Phone: 620-682-7933  
<http://kcc.ks.gov/>

Andrew J. French, Chairperson  
Dwight D. Keen, Commissioner  
Annie Kuether, Commissioner

Laura Kelly, Governor

05/29/2024

Katherine McClurkan  
Merit Energy Company, LLC  
13727 Noel Road, Suite 1200  
Dallas, TX 75240

Re: Temporary Abandonment  
API 15-055-20457-00-00  
SEQUOYAH MORROW UNIT (GARDEN CITY  
H) 102 (2)  
NW/4 Sec.23-23S-34W  
Finney County, Kansas

Dear Katherine McClurkan:

"Your temporary abandonment (TA) application for the well listed above has been approved. In accordance with K.A.R. 82-3-111 the TA status of this well will expire 05/29/2025.

- \* If you return this well to service or plug it, please notify the District Office.
- \* If you sell this well you are required to file a Transfer of Operator form, T-1.
- \* If the well will remain temporarily abandoned, you must submit a new TA application, CP-111, before 05/29/2025.

You may contact me at the number above if you have questions.

Very truly yours,

Michael Maier"