

KANSAS CORPORATION COMMISSION
OIL & GAS CONSERVATION DIVISION

TEMPORARY ABANDONMENT WELL APPLICATION

OPERATOR: License# \_\_\_\_\_
Name: \_\_\_\_\_
Address 1: \_\_\_\_\_
Address 2: \_\_\_\_\_
City: \_\_\_\_\_ State: \_\_\_\_\_ Zip: \_\_\_\_\_ + \_\_\_\_\_
Contact Person: \_\_\_\_\_
Phone:( \_\_\_\_\_ ) \_\_\_\_\_
Contact Person Email: \_\_\_\_\_
Field Contact Person: \_\_\_\_\_
Field Contact Person Phone: ( \_\_\_\_\_ ) \_\_\_\_\_

API No. 15- \_\_\_\_\_
Spot Description: \_\_\_\_\_
- - - - - Sec. \_\_\_\_\_ Twp. \_\_\_\_\_ S. R. \_\_\_\_\_  E  W
\_\_\_\_\_ feet from  N /  S Line of Section
\_\_\_\_\_ feet from  E /  W Line of Section
GPS Location: Lat: \_\_\_\_\_, Long: \_\_\_\_\_
Datum:  NAD27  NAD83  WGS84
County: \_\_\_\_\_ Elevation: \_\_\_\_\_  GL  KB
Lease Name: \_\_\_\_\_ Well #: \_\_\_\_\_
Well Type: (check one)  Oil  Gas  OG  WSW  Other: \_\_\_\_\_
 SWD Permit #: \_\_\_\_\_  ENHR Permit #: \_\_\_\_\_
 Gas Storage Permit #: \_\_\_\_\_
Spud Date: \_\_\_\_\_ Date Shut-In: \_\_\_\_\_

Table with 7 columns: Conductor, Surface, Production, Intermediate, Liner, Tubing. Rows include Size, Setting Depth, Amount of Cement, Top of Cement, Bottom of Cement.

Casing Fluid Level from Surface: \_\_\_\_\_ How Determined? \_\_\_\_\_ Date: \_\_\_\_\_
Casing Squeeze(s): \_\_\_\_\_ to \_\_\_\_\_ w / \_\_\_\_\_ sacks of cement, \_\_\_\_\_ to \_\_\_\_\_ w / \_\_\_\_\_ sacks of cement. Date: \_\_\_\_\_
Do you have a valid Oil & Gas Lease?  Yes  No
Depth and Type:  Junk in Hole at \_\_\_\_\_  Tools in Hole at \_\_\_\_\_ Casing Leaks:  Yes  No Depth of casing leak(s): \_\_\_\_\_
Type Completion:  ALT. I  ALT. II Depth of:  DV Tool: \_\_\_\_\_ w / \_\_\_\_\_ sacks of cement  Port Collar: \_\_\_\_\_ w / \_\_\_\_\_ sack of cement
Packer Type: \_\_\_\_\_ Size: \_\_\_\_\_ Inch Set at: \_\_\_\_\_ Feet
Total Depth: \_\_\_\_\_ Plug Back Depth: \_\_\_\_\_ Plug Back Method: \_\_\_\_\_

Geological Data:

Table with 4 columns: Formation Name, Formation Top, Formation Base, Completion Information. Rows 1 and 2.

UNDER PENALTY OF PERJURY I HEREBY ATTEST THAT THE INFORMATION CONTAINED HEREIN IS TRUE AND CORRECT TO THE BEST OF MY KNOWLEDGE

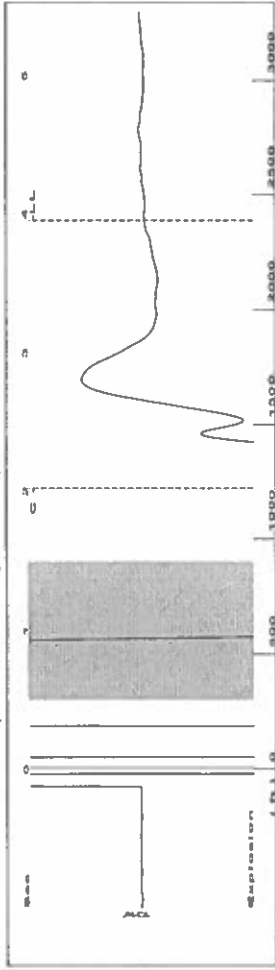
Submitted Electronically

Do NOT Write in This Space - KCC USE ONLY
Date Tested: \_\_\_\_\_ Results: \_\_\_\_\_ Date Plugged: \_\_\_\_\_ Date Repaired: \_\_\_\_\_ Date Put Back in Service: \_\_\_\_\_
Review Completed by: \_\_\_\_\_ Comments: \_\_\_\_\_
TA Approved:  Yes  Denied Date: \_\_\_\_\_

Mail to the Appropriate KCC Conservation Office:

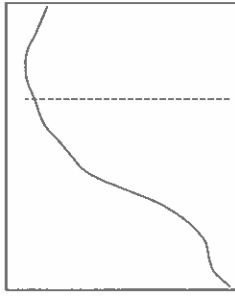
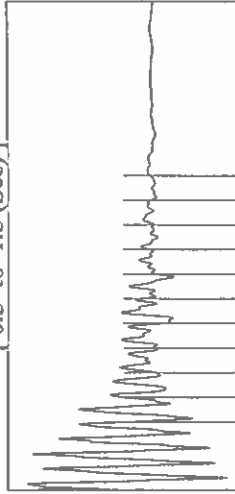
Table with 3 columns: District Office #, Address, Phone. Rows 1-4.

Group: TAD Well: Hyer A-3 (acquired on: 05/21/24 12:47:43 )



Filter Type High Pass Automatic Collar Count Yes  
 Manual Acoustic Veloc 1252.96 ft/s Manual JTS/sec 19.7628

1.05 to 1.5 (Sec)

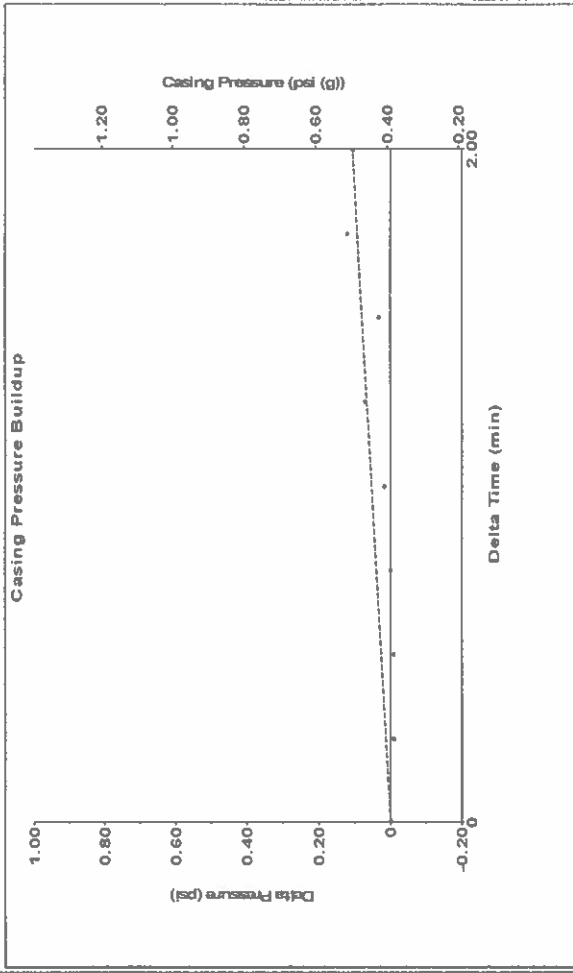


**Analysis Method: Automatic**

Group: TAD Well: Hyer A-3 (acquired on: 05/21/24 12:47:43 )

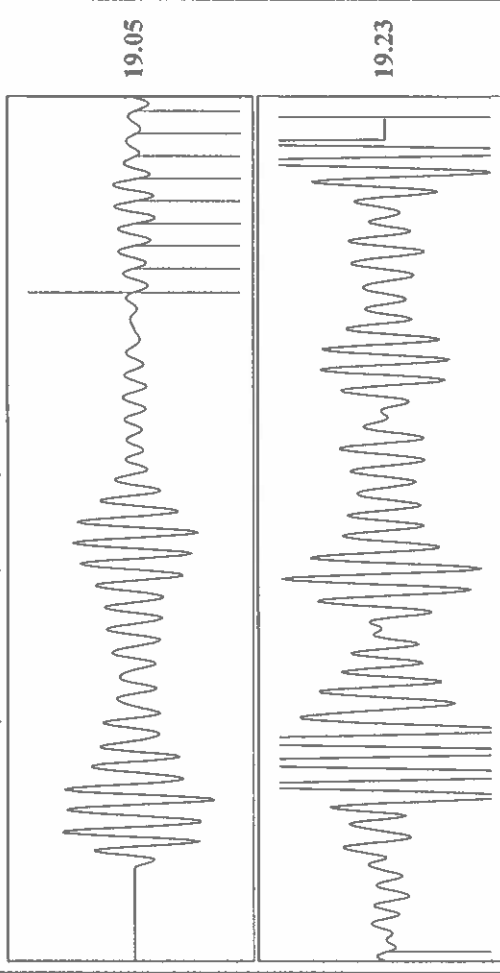
Production	Potential	Casing Pressure	0.4 psi (g)
Current	BBL/D	Casing Pressure Buildup	0.106 psi
Oil	BBL/D	Gas/Liquid Interface Pressure	2.00 min
Water	BBL/D	Liquid Level Depth	1.4 psi (g)
Gas	BBL/D	2389.39 ft	
IPR Method	Vogel	Pump Intake Depth	2544.00 ft
PBHP/SBHP	0.0	Formation Depth	2576.00 ft
Production Efficiency		Acoustic Velocity	1208.9 ft/s
Oil	40 deg.API	Formation Submergence	155 ft
Water	1.05 Sp.Gr.H2O	Total Gaseous Liquid Column HT (TVD)	148 ft
Gas	0.79 Sp.Gr.AIR	Equivalent Gas Free Liquid HT (TVD)	
Acoustic Test			
		Pump Intake	51.7 psi (g)
		Producing BHP	65.8 psi (g)
		Static BHP	-. -. psi (g)
		Producing	
		Annular	
		Gas Flow	1 Mscf/D
		% Liquid	96 %

Group: TAD Well: Hyer A-3 (acquired on: 05/21/24 12:47:43 )



Change in Pressure 0.11 psi  
 Change in Time 2.00 min  
 PT 14654 Range

Group: TAD Well: Hyer A-3 (acquired on: 05/21/24 12:47:43 )



Acoustic Velocity 1208.9 ft/s  
 Joints Per Second 19.0678  
 Depth to liquid level 2389.39 ft  
 Automatic Collar Count Yes  
 Joints counted 9  
 Joints to liquid level 75.375  
 Filter Width 17.7628  
 Time to 1st Collar 1.548  
 2.02

Conservation Division  
District Office No. 1  
210 E. Frontview, Suite A  
Dodge City, KS 67801



Phone: 620-682-7933  
<http://kcc.ks.gov/>

Andrew J. French, Chairperson  
Dwight D. Keen, Commissioner  
Annie Kuether, Commissioner

Laura Kelly, Governor

05/29/2024

Katherine McClurkan  
Merit Energy Company, LLC  
13727 Noel Road, Suite 1200  
Dallas, TX 75240-7362

Re: Temporary Abandonment  
API 15-055-10085-00-00  
Hyer A 3  
SE/4 Sec.16-21S-33W  
Finney County, Kansas

Dear Katherine McClurkan:

"Your temporary abandonment (TA) application for the well listed above has been approved. In accordance with K.A.R. 82-3-111 the TA status of this well will expire 05/29/2025.

- \* If you return this well to service or plug it, please notify the District Office.
- \* If you sell this well you are required to file a Transfer of Operator form, T-1.
- \* If the well will remain temporarily abandoned, you must submit a new TA application, CP-111, before 05/29/2025.

You may contact me at the number above if you have questions.

Very truly yours,

Michael Maier"