

KANSAS CORPORATION COMMISSION  
OIL & GAS CONSERVATION DIVISION

TEMPORARY ABANDONMENT WELL APPLICATION

OPERATOR: License# \_\_\_\_\_  
 Name: \_\_\_\_\_  
 Address 1: \_\_\_\_\_  
 Address 2: \_\_\_\_\_  
 City: \_\_\_\_\_ State: \_\_\_\_\_ Zip: \_\_\_\_\_ + \_\_\_\_\_  
 Contact Person: \_\_\_\_\_  
 Phone: ( \_\_\_\_\_ ) \_\_\_\_\_  
 Contact Person Email: \_\_\_\_\_  
 Field Contact Person: \_\_\_\_\_  
 Field Contact Person Phone: ( \_\_\_\_\_ ) \_\_\_\_\_

API No. 15- \_\_\_\_\_  
 Spot Description: \_\_\_\_\_  
 \_\_\_\_\_ - \_\_\_\_\_ - \_\_\_\_\_ - \_\_\_\_\_ Sec. \_\_\_\_\_ Twp. \_\_\_\_\_ S. R. \_\_\_\_\_  E  W  
 \_\_\_\_\_ feet from  N /  S Line of Section  
 \_\_\_\_\_ feet from  E /  W Line of Section  
 GPS Location: Lat: \_\_\_\_\_, Long: \_\_\_\_\_  
(e.g. xx.xxxxx) (e.g. -xxx.xxxxx)  
 Datum:  NAD27  NAD83  WGS84  
 County: \_\_\_\_\_ Elevation: \_\_\_\_\_  GL  KB  
 Lease Name: \_\_\_\_\_ Well #: \_\_\_\_\_  
 Well Type: (check one)  Oil  Gas  OG  WSW  Other: \_\_\_\_\_  
 SWD Permit #: \_\_\_\_\_  ENHR Permit #: \_\_\_\_\_  
 Gas Storage Permit #: \_\_\_\_\_  
 Spud Date: \_\_\_\_\_ Date Shut-In: \_\_\_\_\_

	Conductor	Surface	Production	Intermediate	Liner	Tubing
Size						
Setting Depth						
Amount of Cement						
Top of Cement						
Bottom of Cement						

Casing Fluid Level from Surface: \_\_\_\_\_ How Determined? \_\_\_\_\_ Date: \_\_\_\_\_  
 Casing Squeeze(s): \_\_\_\_\_ to \_\_\_\_\_ w / \_\_\_\_\_ sacks of cement, \_\_\_\_\_ to \_\_\_\_\_ w / \_\_\_\_\_ sacks of cement. Date: \_\_\_\_\_  
(top) (bottom) (top) (bottom)  
 Do you have a valid Oil & Gas Lease?  Yes  No  
 Depth and Type:  Junk in Hole at \_\_\_\_\_  Tools in Hole at \_\_\_\_\_ Casing Leaks:  Yes  No Depth of casing leak(s): \_\_\_\_\_  
(depth) (depth)  
 Type Completion:  ALT. I  ALT. II Depth of:  DV Tool: \_\_\_\_\_ w / \_\_\_\_\_ sacks of cement  Port Collar: \_\_\_\_\_ w / \_\_\_\_\_ sack of cement  
(depth) (depth)  
 Packer Type: \_\_\_\_\_ Size: \_\_\_\_\_ Inch Set at: \_\_\_\_\_ Feet  
 Total Depth: \_\_\_\_\_ Plug Back Depth: \_\_\_\_\_ Plug Back Method: \_\_\_\_\_

**Geological Data:**

Formation Name	Formation Top	Formation Base	Completion Information
1. _____	At: _____	to _____ Feet	Perforation Interval _____ to _____ Feet or Open Hole Interval _____ to _____ Feet
2. _____	At: _____	to _____ Feet	Perforation Interval _____ to _____ Feet or Open Hole Interval _____ to _____ Feet

UNDER PENALTY OF PERJURY I HEREBY ATTEST THAT THE INFORMATION CONTAINED HEREIN IS TRUE AND CORRECT TO THE BEST OF MY KNOWLEDGE

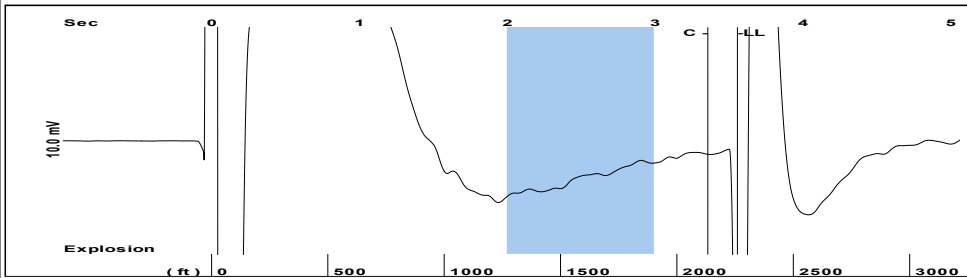
Submitted Electronically

<b>Do NOT Write in This Space - KCC USE ONLY</b>	Date Tested: _____	Results: _____	Date Plugged: _____	Date Repaired: _____	Date Put Back in Service: _____
	Review Completed by: _____ Comments: _____				
TA Approved: <input type="checkbox"/> Yes <input type="checkbox"/> Denied Date: _____					

Mail to the Appropriate KCC Conservation Office:

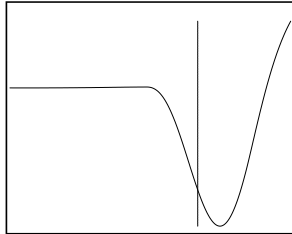
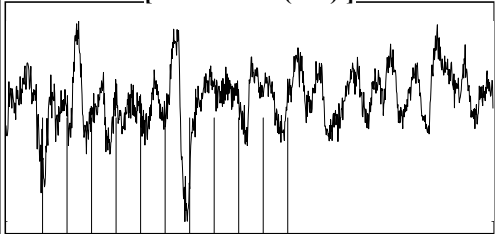
	KCC District Office #1 - 210 E. Frontview, Suite A, Dodge City, KS 67801	Phone 620.682.7933
	KCC District Office #2 - 3450 N. Rock Road, Building 600, Suite 601, Wichita, KS 67226	Phone 316.337.7400
	KCC District Office #3 - 137 E. 21st St., Chanute, KS 66720	Phone 620.902.6450
	KCC District Office #4 - 2301 E. 13th Street, Hays, KS 67601-2651	Phone 785.261.6250

Group: Stratakan Well: McFarland #2 (acquired on: 05/01/24 08:44:12)



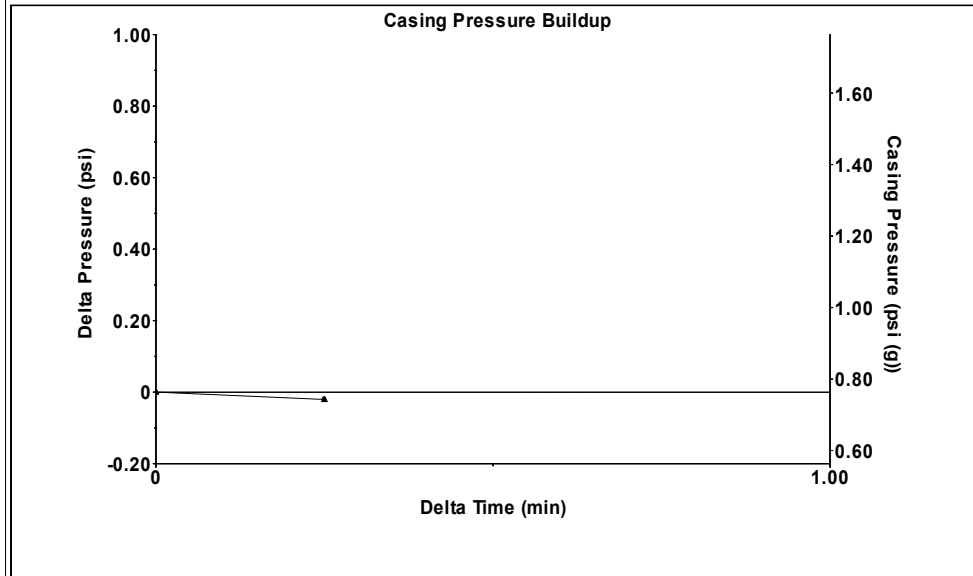
Filter Type High Pass Automatic Collar Count Yes Time 3.556 sec  
 Manual Acoustic Velo 1260.44 ft/s Manual JTS/sec 19.8807 Joints 71.2784 Jts  
 Depth 2259.53 ft

[ 2.0 to 3.0 (Sec) ]



**Analysis Method: Automatic**

Group: Stratakan Well: McFarland #2 (acquired on: 05/01/24 08:44:12)

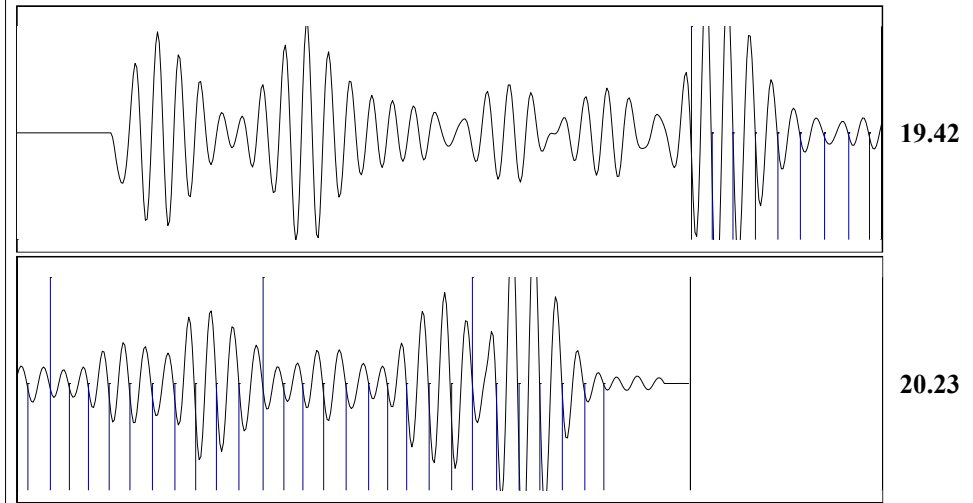


Change in Pressure -0.02 psi PT 14970  
 Change in Time 0.25 min Range 0 - ? psi

Group: Stratakan Well: McFarland #2 (acquired on: 05/01/24 08:44:12)

<b>Production</b>					
Current	Potential		Casing Pressure	Static	
Oil - *-	- *- BBL/D		0.8 psi (g)		
Water - *-	- *- BBL/D		Casing Pressure Buildup	Oil Column Height	
Gas - *-	- *- Mscf/D		-0.0 psi	MD 0 ft	
			0.25 min		
			Gas/Liquid Interface Pressure	Water Column Height	
			1.6 psi (g)	MD - *- ft	
IPR Method	Vogel		Liquid Level Depth		
PBHP/SBHP	- *-		2259.53 ft		
Production Efficiency	0.0		Pump Intake Depth		
			- *- ft		
Oil 40 deg.API			Formation Depth		
Water 1.05 Sp.Gr.H2O			3784.00 ft		
Gas 0.72 Sp.Gr.AIR					
Acoustic Velocity	1270.82 ft/s		Static BHP		
			694.7 psi (g)		

Group: Stratakan Well: McFarland #2 (acquired on: 05/01/24 08:44:12)



Acoustic Velocity 1270.82 ft/s Joints counted 36  
 Joints Per Second 20.0445 jts/sec Joints to liquid level 71.2784  
 Depth to liquid level 2259.53 ft Filter Width 17.8807 21.8807  
 Automatic Collar Count Yes Time to 1st Collar 1.56 3.356

05/30/2024

Justin R Prater  
StrataKan Exploration, LLC  
100 S MAIN ST  
PLAINVILLE, KS 67663-2234

Re: Temporary Abandonment  
API 15-065-24149-00-00  
MCFARLAND 2  
NE/4 Sec.18-09S-21W  
Graham County, Kansas

Dear Justin R Prater:

"Your temporary abandonment (TA) application for the well listed above has been approved. In accordance with K.A.R. 82-3-111 the TA status of this well will expire 05/30/2025.

- \* If you return this well to service or plug it, please notify the District Office.
- \* If you sell this well you are required to file a Transfer of Operator form, T-1.
- \* If the well will remain temporarily abandoned, you must submit a new TA application, CP-111, before 05/30/2025.

You may contact me at the number above if you have questions.

Very truly yours,

RICHARD WILLIAMS"