

KANSAS CORPORATION COMMISSION
OIL & GAS CONSERVATION DIVISION

TEMPORARY ABANDONMENT WELL APPLICATION

OPERATOR: License#
Name:
Address 1:
Address 2:
City: State: Zip:
Contact Person:
Phone:
Contact Person Email:
Field Contact Person:
Field Contact Person Phone:

API No. 15-
Spot Description:
Sec. Twp. S. R.
GPS Location: Lat: Long:
Datum: NAD27 NAD83 WGS84
County: Elevation:
Lease Name: Well #:
Well Type: Oil Gas OG WSW Other:
SWD Permit #: ENHR Permit #:
Gas Storage Permit #:
Spud Date: Date Shut-In:

Table with 7 columns: Conductor, Surface, Production, Intermediate, Liner, Tubing. Rows include Size, Setting Depth, Amount of Cement, Top of Cement, Bottom of Cement.

Casing Fluid Level from Surface: How Determined? Date:
Casing Squeeze(s): to w / sacks of cement, to w / sacks of cement. Date:
Do you have a valid Oil & Gas Lease? Yes No
Depth and Type: Junk in Hole at Tools in Hole at Casing Leaks: Yes No Depth of casing leak(s):
Type Completion: ALT. I ALT. II Depth of: DV Tool: w / sacks of cement Port Collar: w / sack of cement
Packer Type: Size: Inch Set at: Feet
Total Depth: Plug Back Depth: Plug Back Method:

Geological Date:

Table with 4 columns: Formation Name, Formation Top, Formation Base, Completion Information. Rows 1 and 2.

UNDER PENALTY OF PERJURY I HEREBY ATTEST THAT THE INFORMATION CONTAINED HEREIN IS TRUE AND CORRECT TO THE BEST OF MY KNOWLEDGE

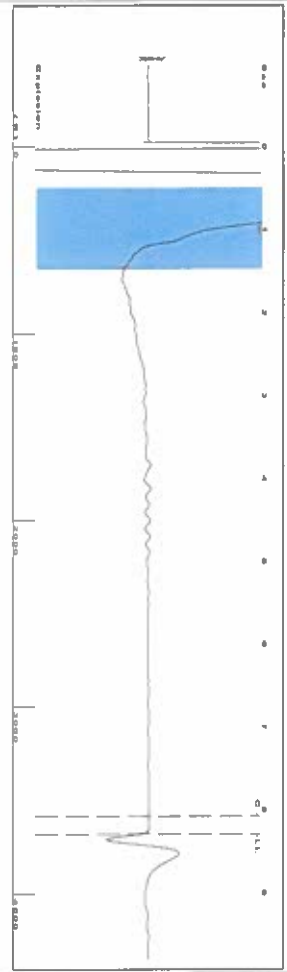
Submitted Electronically

Do NOT Write in This Space - KCC USE ONLY
Date Tested: Results: Date Plugged: Date Repaired: Date Put Back in Service:
Review Completed by: Comments:
TA Approved: Yes Denied Date:

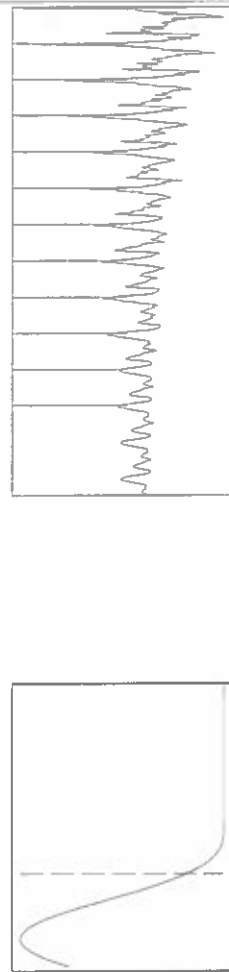
Mail to the Appropriate KCC Conservation Office:

Table with 3 columns: District Office #, Address, Phone. Rows 1-4.

Group: SUBLETTE Well: McKinley 15P (acquired on: 06/05/24 11:06:50)



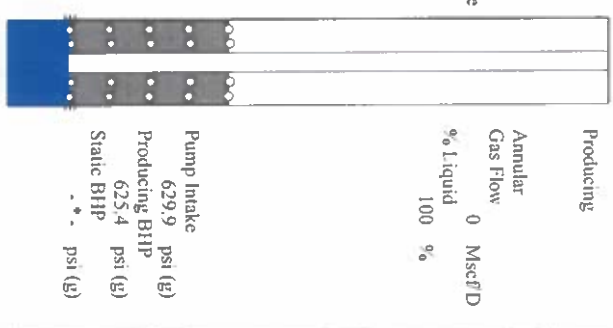
Filter Type High Pass Automatic Collar Count Yes
 Manual Acoustic Vel 875.639 ft/s Manual JTS/sec 13.459
 Time 8.305 sec
 Joints 113.211 JTS
 Depth 3682.76 ft



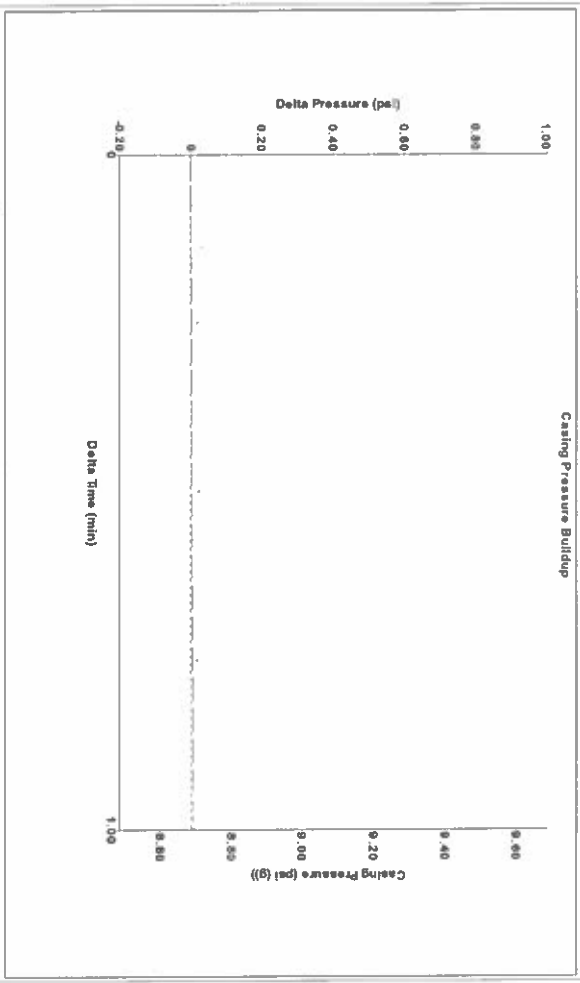
Analysis Method: Automatic

Group: SUBLETTE Well: McKinley 15P (acquired on: 06/05/24 11:06:50)

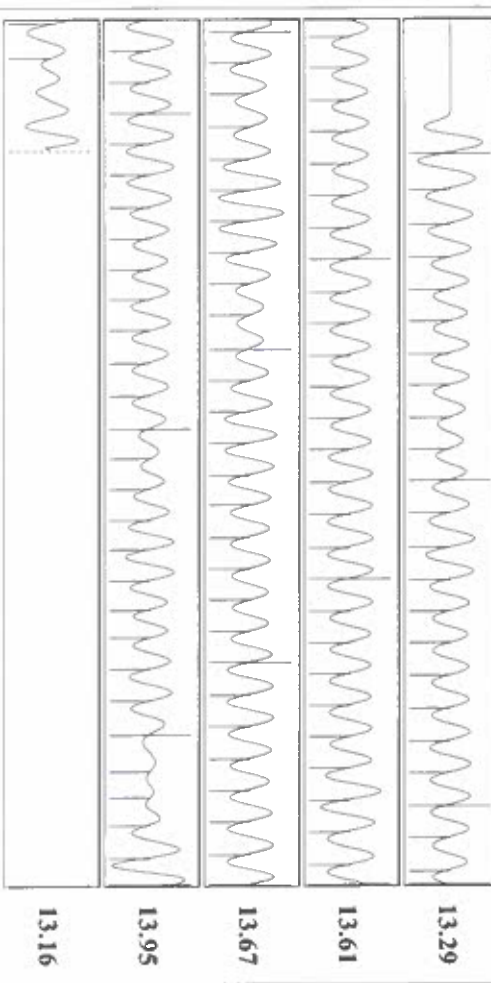
Production	Potential	Casing Pressure	Producing
Current	Oil -*- BBL/D	8.7 psi (g)	Annular
Water -*-	Water -*- BBL/D	Casing Pressure Buildup	Gas Flow
Gas -*-	Gas -*- Mscf/D	0.006 psi	% Liquid
IPR Method	Vogel	1.00 min	Misc/D
PBHIP/SBHP	Production Efficiency	Gas/Liquid Interface Pressure	0
	0.0	12.1 psi (g)	100 %
Oil 40 deg API	Liquid Level Depth		
Water 1.05 Sp.Gr.H2O	3682.76 ft		
Gas 1.08 Sp.Gr.AIR	Pump Intake Depth		
Acoustic Velocity	5535.00 ft		
886.878 ft/s	Formation Depth		
	5521.00 ft		



Group: SUBLETTE Well: McKinley 15P (acquired on: 06/05/24 11:06:50)



Group: SUBLETTE Well: McKinley 15P (acquired on: 06/05/24 11:06:50)



Acoustic Velocity	886.878 ft/s	Joints counted	106
Joints Per Second	13.6317 JTS/Sec	Joints to liquid level	113.211
Depth to liquid level	3682.76 ft	Filter Width	11.459
Automatic Collar Count	Yes	Time to 1st Collar	0.312

06/13/2024

Katherine McClurkan
Merit Energy Company, LLC
13727 Noel Road, Suite 1200
Dallas, TX 75240-7362

Re: Temporary Abandonment
API 15-081-21647-00-02
McKinley 15-P19-30-33
SE/4 Sec.19-30S-33W
Haskell County, Kansas

Dear Katherine McClurkan:

"Your temporary abandonment (TA) application for the well listed above has been approved. In accordance with K.A.R. 82-3-111 the TA status of this well will expire 06/13/2025.

- * If you return this well to service or plug it, please notify the District Office.
- * If you sell this well you are required to file a Transfer of Operator form, T-1.
- * If the well will remain temporarily abandoned, you must submit a new TA application, CP-111, before 06/13/2025.

You may contact me at the number above if you have questions.

Very truly yours,

Michael Maier"