

KANSAS CORPORATION COMMISSION
OIL & GAS CONSERVATION DIVISION

TEMPORARY ABANDONMENT WELL APPLICATION

OPERATOR: License#
Name:
Address 1:
Address 2:
City: State: Zip:
Contact Person:
Phone:
Contact Person Email:
Field Contact Person:
Field Contact Person Phone:

API No. 15-
Spot Description:
Sec. Twp. S. R.
GPS Location: Lat: Long:
Datum: NAD27 NAD83 WGS84
County: Elevation:
Lease Name: Well #:
Well Type: Oil Gas OG WSW Other:
SWD Permit #: ENHR Permit #:
Gas Storage Permit #:
Spud Date: Date Shut-In:

Table with 7 columns: Conductor, Surface, Production, Intermediate, Liner, Tubing. Rows include Size, Setting Depth, Amount of Cement, Top of Cement, Bottom of Cement.

Casing Fluid Level from Surface: How Determined? Date:
Casing Squeeze(s): to w / sacks of cement, to w / sacks of cement. Date:
Do you have a valid Oil & Gas Lease? Yes No
Depth and Type: Junk in Hole at Tools in Hole at Casing Leaks: Yes No Depth of casing leak(s):
Type Completion: ALT. I ALT. II Depth of: DV Tool: w / sacks of cement Port Collar: w / sack of cement
Packer Type: Size: Inch Set at: Feet
Total Depth: Plug Back Depth: Plug Back Method:

Geological Date:

Table with 4 columns: Formation Name, Formation Top, Formation Base, Completion Information. Rows 1 and 2.

UNDER PENALTY OF PERJURY I HEREBY ATTEST THAT THE INFORMATION CONTAINED HEREIN IS TRUE AND CORRECT TO THE BEST OF MY KNOWLEDGE

Submitted Electronically

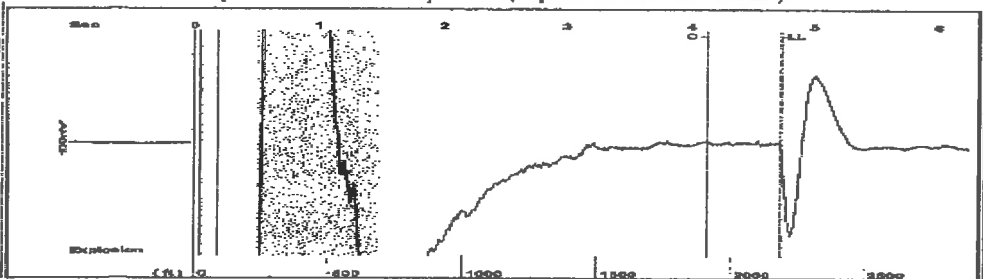
Do NOT Write in This Space - KCC USE ONLY
Date Tested: Results: Date Plugged: Date Repaired: Date Put Back in Service:
Review Completed by: Comments:
TA Approved: Yes Denied Date:

Mail to the Appropriate KCC Conservation Office:

Table with 2 columns: Office Address, Phone. Rows for District Office #1, #2, #3, #4.

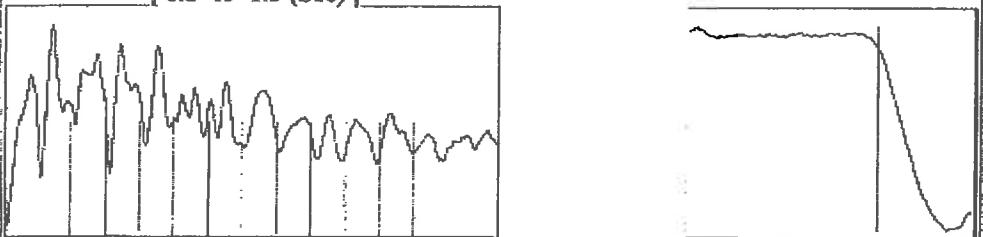
002

Group: Radium Well: Krampe # 1-15 (acquired on: 06/11/24 14:11:25)



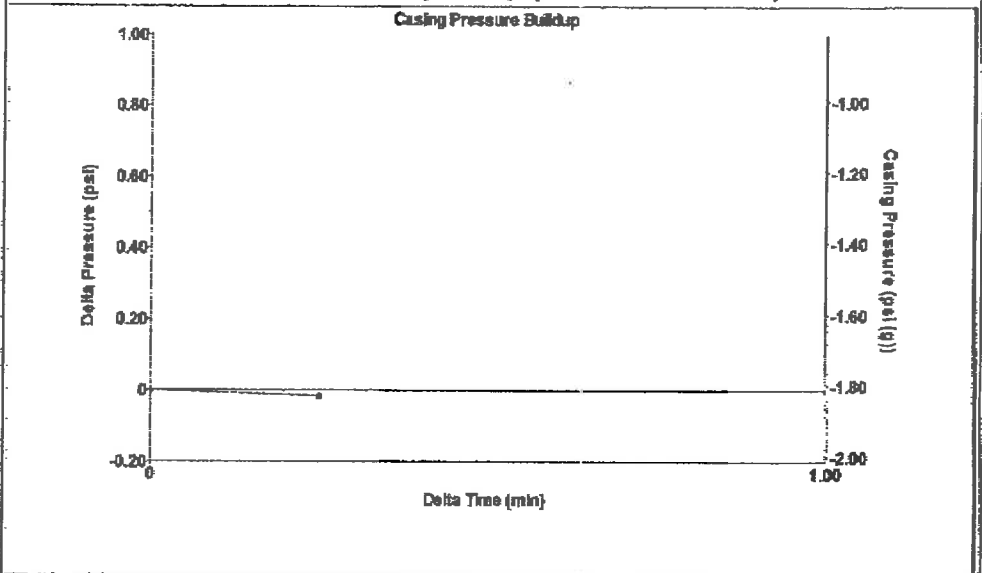
Filter Type High Pass Automatic Collar Count Yes Time 4.738 sec  
 Manual Acoustic Velo 892.593 ft/s Manual JTS/sec 14.245 Joints 69.9653 Jts  
 Depth 2192.01 ft

[ 0.5 to 1.5 (Sec) ]



Analysis Method: Automatic

Group: Radium Well: Krampe # 1-15 (acquired on: 06/11/24 14:11:25)



Change in Pressure -0.02 psi PTI 3440  
 Change in Time 0.25 min Range 0 - ? psi

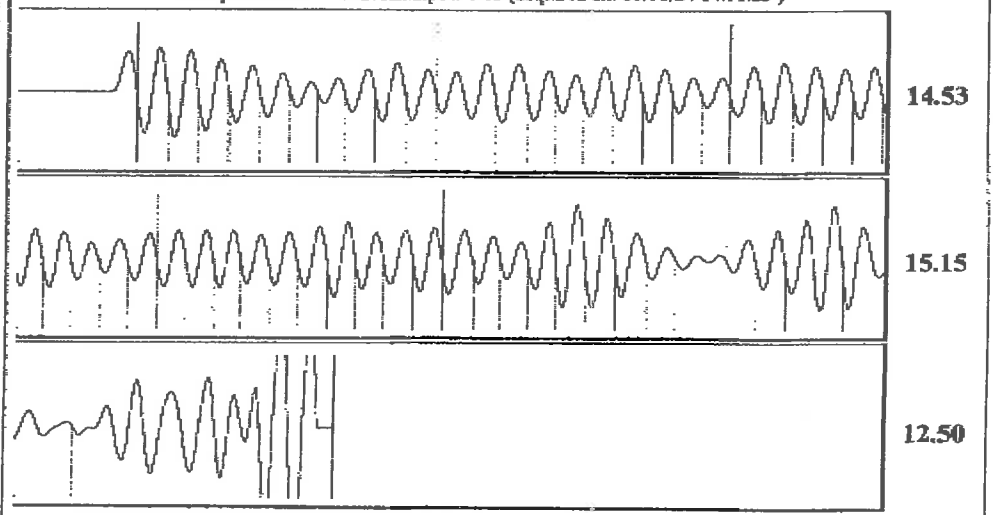
ellinwood

Group: Radium Well: Krampe # 1-15 (acquired on: 06/11/24 14:11:25)

Production Current	Potential	Casing Pressure	Producing
Oil -*- BBL/D	-*- BBL/D	-1.8 psi (g)	
Water -*- BBL/D	-*- BBL/D	Casing Pressure Buildup	Annular Gas Flow
Gas -*- Mscf/D	-*- Mscf/D	-0.017 psi	0 Mscf/D
		0.25 min	% Liquid
IPR Method Vogel		Gas/Liquid Interface Pressure	100 %
PBHP/SBHP -*-		-0.8 psi (g)	
Production Efficiency 0.0			
Oil 40 deg API		Liquid Level Depth	
Water 1.05 Sp.Gr.H2O		2192.01 ft	
Gas 1.05 Sp.Gr.AIR		Pump Intake Depth	
		3760.00 ft	
Acoustic Velocity 925.29 ft/s		Formation Depth	
		3713.00 ft	
Formation Submergence		Pump Intake	
Total Gaseous Liquid Column HT (TVD) 1568 ft		526.8 psi (g)	
Equivalent Gas Free Liquid HT (TVD) 1568 ft		Producing BHP	
		511.6 psi (g)	
Acoustic Test		Static BHP	
		-*- psi (g)	



Group: Radium Well: Krampe # 1-15 (acquired on: 06/11/24 14:11:25)



Acoustic Velocity 925.29 ft/s Joints counted 57  
 Joints Per Second 14.7668 jts/sec Joints to liquid level 69.9653  
 Depth to liquid level 2192.01 ft Filter Width 12.245 16.245  
 Automatic Collar Count Yes Time to 1st Collar 0.276 4.136

01/17/2021 20:24 FAX 16205642062

Conservation Division  
District Office No. 1  
210 E. Frontview, Suite A  
Dodge City, KS 67801



Phone: 620-682-7933  
<http://kcc.ks.gov/>

Andrew J. French, Chairperson  
Dwight D. Keen, Commissioner  
Annie Kuether, Commissioner

Laura Kelly, Governor

06/17/2024

Loveness Mpanje  
F. G. Holl Company L.L.C.  
9431 E CENTRAL STE 100  
WICHITA, KS 67206-2563

Re: Temporary Abandonment  
API 15-185-23160-00-02  
KRAMPE OWWO 1-15  
SW/4 Sec.15-21S-14W  
Stafford County, Kansas

Dear Loveness Mpanje:

"Your temporary abandonment (TA) application for the well listed above has been approved. In accordance with K.A.R. 82-3-111 the TA status of this well will expire 06/17/2025.

- \* If you return this well to service or plug it, please notify the District Office.
- \* If you sell this well you are required to file a Transfer of Operator form, T-1.
- \* If the well will remain temporarily abandoned, you must submit a new TA application, CP-111, before 06/17/2025.

You may contact me at the number above if you have questions.

Very truly yours,

Michael Maier"