

KANSAS CORPORATION COMMISSION
OIL & GAS CONSERVATION DIVISION

TEMPORARY ABANDONMENT WELL APPLICATION

OPERATOR: License#
Name:
Address 1:
Address 2:
City: State: Zip:
Contact Person:
Phone:
Contact Person Email:
Field Contact Person:
Field Contact Person Phone:

API No. 15-
Spot Description:
Sec. Twp. S. R.
GPS Location: Lat: Long:
Datum: NAD27 NAD83 WGS84
County: Elevation:
Lease Name: Well #:
Well Type: Oil Gas OG WSW Other:
SWD Permit #: ENHR Permit #:
Gas Storage Permit #:
Spud Date: Date Shut-In:

Table with 7 columns: Conductor, Surface, Production, Intermediate, Liner, Tubing. Rows include Size, Setting Depth, Amount of Cement, Top of Cement, Bottom of Cement.

Casing Fluid Level from Surface: How Determined? Date:
Casing Squeeze(s): to w / sacks of cement, to w / sacks of cement. Date:
Do you have a valid Oil & Gas Lease? Yes No
Depth and Type: Junk in Hole at Tools in Hole at Casing Leaks: Yes No Depth of casing leak(s):
Type Completion: ALT. I ALT. II Depth of: DV Tool: w / sacks of cement Port Collar: w / sack of cement
Packer Type: Size: Inch Set at: Feet
Total Depth: Plug Back Depth: Plug Back Method:

Geological Data:

Table with 4 columns: Formation Name, Formation Top, Formation Base, Completion Information. Rows 1 and 2.

UNDER PENALTY OF PERJURY I HEREBY ATTEST THAT THE INFORMATION CONTAINED HEREIN IS TRUE AND CORRECT TO THE BEST OF MY KNOWLEDGE

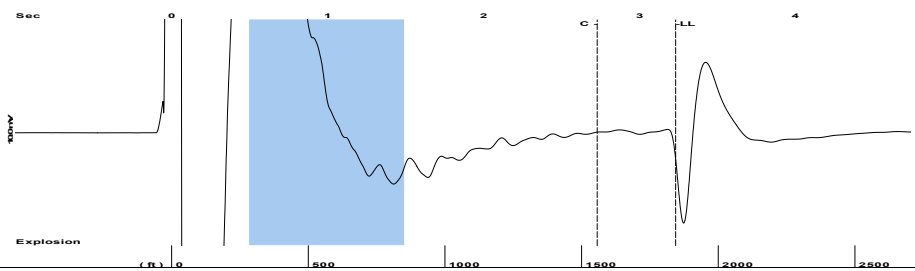
Submitted Electronically

Do NOT Write in This Space - KCC USE ONLY
Date Tested: Results: Date Plugged: Date Repaired: Date Put Back in Service:
Review Completed by: Comments:
TA Approved: Yes Denied Date:

Mail to the Appropriate KCC Conservation Office:

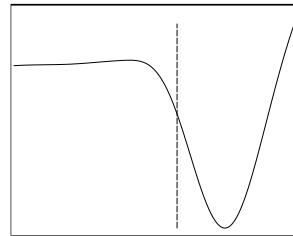
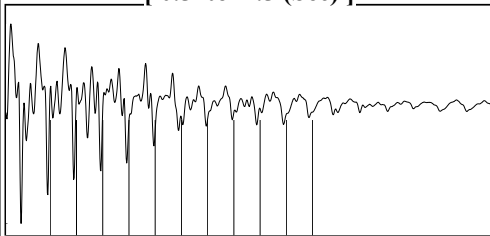
Table with 2 columns: Office Address, Phone. Rows for District Office #1, #2, #3, #4.

Group: MyWells Well: HAFLICH 1 (acquired on: 06/13/24 15:54:32)



Filter Type High Pass Automatic Collar Count Yes Time 3.231 sec  
 Manual Acoustic Veloc 1176.25 ft/s Manual JTS/sec 18.5529 Joints 58.1686 Jts  
 Depth 1843.94 ft

[ 0.5 to 1.5 (Sec) ]



Analysis Method: Automatic

Group: MyWells Well: HAFLICH 1 (acquired on: 06/13/24 15:54:32)



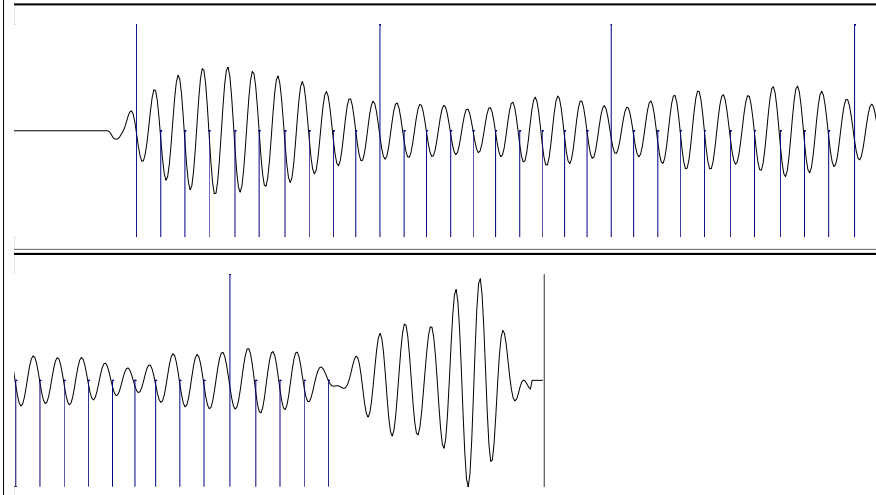
Change in Pressure 0.00 psi PT12098  
 Range 0 - ? psi  
 Change in Time 0.00 min

Group: MyWells Well: HAFLICH 1 (acquired on: 06/13/24 15:54:32)

Production Current	Potential	Casing Pressure	Producing
Oil - * -	- * - BBL/D	0.0 psi (g)	Annular Gas Flow - * - Mscf/D
Water - * -	- * - BBL/D	Casing Pressure Buildup - * - psi	% Liquid 100 %
Gas - * -	- * - Mscf/D	- * - min	
IPR Method	Vogel	Gas/Liquid Interface Pressure - * - psi (g)	
PBHP/SBHP - * -	- * -		
Production Efficiency 0.0		Liquid Level Depth 1843.94 ft	
Oil 40 deg.API		Pump Intake Depth - * - ft	
Water 1.05 Sp.Gr.H2O		Formation Depth 2675.00 ft	
Gas 0.85 Sp.Gr.AIR			
Acoustic Velocity 1141.41 ft/s			
Formation Submergence			
Total Gaseous Liquid Column HT (TVD) - * - ft			
Equivalent Gas Free Liquid HT (TVD) - * - ft			
Acoustic Test			



Group: MyWells Well: HAFLICH 1 (acquired on: 06/13/24 15:54:32)



Acoustic Velocity	1141.41 ft/s	Joints counted	44
Joints Per Second	18.0033 jts/sec	Joints to liquid level	58.1686
Depth to liquid level	1843.94 ft	Filter Width	16.5529 20.5529
Automatic Collar Count	Yes	Time to 1st Collar	0.284 2.728

Conservation Division  
District Office No. 1  
210 E. Frontview, Suite A  
Dodge City, KS 67801



Phone: 620-682-7933  
<http://kcc.ks.gov/>

Andrew J. French, Chairperson  
Dwight D. Keen, Commissioner  
Annie Kuether, Commissioner

Laura Kelly, Governor

06/18/2024

Octavio Morales  
American Warrior, Inc.  
PO BOX 399  
GARDEN CITY, KS 67846-0399

Re: Temporary Abandonment  
API 15-055-21098-00-00  
HAFLICH 1  
SE/4 Sec.29-21S-34W  
Finney County, Kansas

Dear Octavio Morales:

"Your temporary abandonment (TA) application for the well listed above has been approved. In accordance with K.A.R. 82-3-111 the TA status of this well will expire 06/18/2025.

- \* If you return this well to service or plug it, please notify the District Office.
- \* If you sell this well you are required to file a Transfer of Operator form, T-1.
- \* If the well will remain temporarily abandoned, you must submit a new TA application, CP-111, before 06/18/2025.

You may contact me at the number above if you have questions.

Very truly yours,

Michael Maier"