

KANSAS CORPORATION COMMISSION
OIL & GAS CONSERVATION DIVISION

TEMPORARY ABANDONMENT WELL APPLICATION

OPERATOR: License#
Name:
Address 1:
Address 2:
City: State: Zip:
Contact Person:
Phone:
Contact Person Email:
Field Contact Person:
Field Contact Person Phone:

API No. 15-
Spot Description:
Sec. Twp. S. R.
GPS Location: Lat: Long:
Datum: NAD27 NAD83 WGS84
County: Elevation:
Lease Name: Well #:
Well Type: Oil Gas OG WSW Other:
SWD Permit #: ENHR Permit #:
Gas Storage Permit #:
Spud Date: Date Shut-In:

Table with 7 columns: Conductor, Surface, Production, Intermediate, Liner, Tubing. Rows include Size, Setting Depth, Amount of Cement, Top of Cement, Bottom of Cement.

Casing Fluid Level from Surface: How Determined? Date:
Casing Squeeze(s): to w / sacks of cement, to w / sacks of cement. Date:
Do you have a valid Oil & Gas Lease? Yes No
Depth and Type: Junk in Hole at Tools in Hole at Casing Leaks: Yes No Depth of casing leak(s):
Type Completion: ALT. I ALT. II Depth of: DV Tool: w / sacks of cement Port Collar: w / sack of cement
Packer Type: Size: Inch Set at: Feet
Total Depth: Plug Back Depth: Plug Back Method:

Geological Data:

Table with 4 columns: Formation Name, Formation Top, Formation Base, Completion Information. Rows 1 and 2.

UNDER PENALTY OF PERJURY I HEREBY ATTEST THAT THE INFORMATION CONTAINED HEREIN IS TRUE AND CORRECT TO THE BEST OF MY KNOWLEDGE

Submitted Electronically

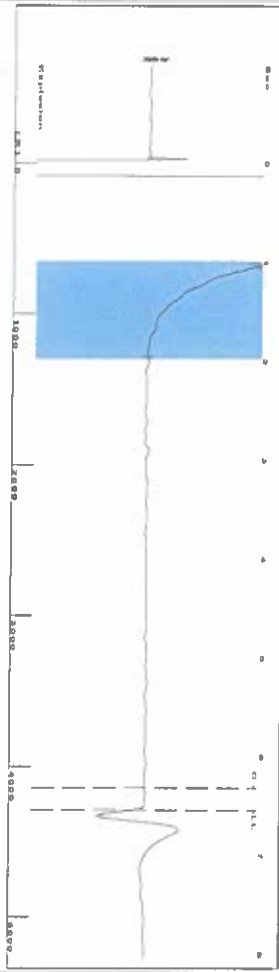
Do NOT Write in This Space - KCC USE ONLY
Date Tested: Results: Date Plugged: Date Repaired: Date Put Back in Service:
Review Completed by: Comments:
TA Approved: Yes Denied Date:

Mail to the Appropriate KCC Conservation Office:

Table with 3 columns: District Office #, Address, Phone. Rows 1-4.



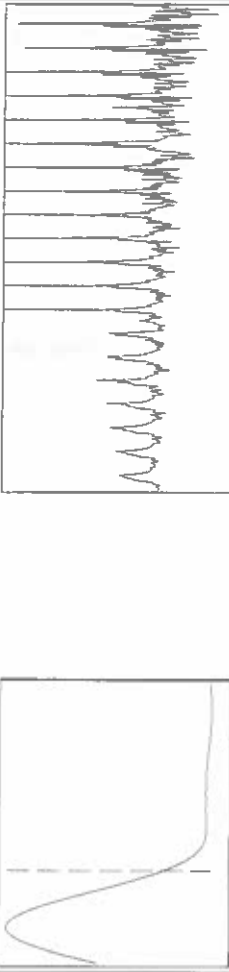
Group: SUBLETTTE Well: Stevens C-2 (acquired on: 06/15/24 13:11:17)



Filter Type High Pass
Manual Acoustic Velo 1299.18 ft/s
Automatic Collar Count Yes
Manual JTS/sec 20.4918

1.10 to 2.0 (Sec) |

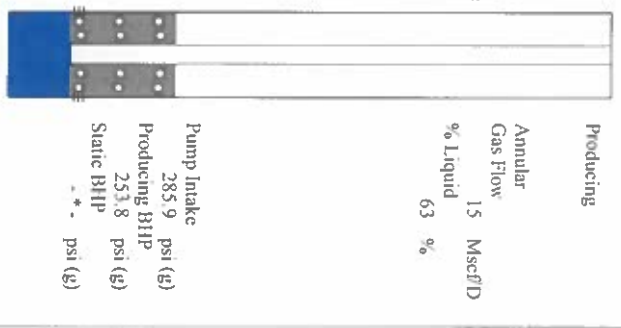
Time 6.542 sec
Joints 135.299 Jis
Depth 4288.99 ft



Analysis Method: Automatic

Group: SUBLETTTE Well: Stevens C-2 (acquired on: 06/15/24 13:11:17)

Production	Potential	Casing Pressure	Producing
Current	BBL/D	14.8 psi (g)	Annular
Oil	BBL/D	0.3 psi	Gas Flow
Water	Mscf/D	1.00 min	% Liquid
Gas		Gas/Liquid Interface Pressure	15 Mscf/D
IPR Method	Vogel	17.9 psi (g)	
PBIIP/SHHP			
Production Efficiency	0.0	Liquid Level Depth	
Oil	40 deg API	4288.99 ft	
Water	1.05 Sp.Gr./H ₂ O	Pump Intake Depth	
Gas	0.69 Sp.Gr./AIR	5495.00 ft	
Acoustic Velocity	1311.22 ft/s	Formation Depth	
		5398.00 ft	

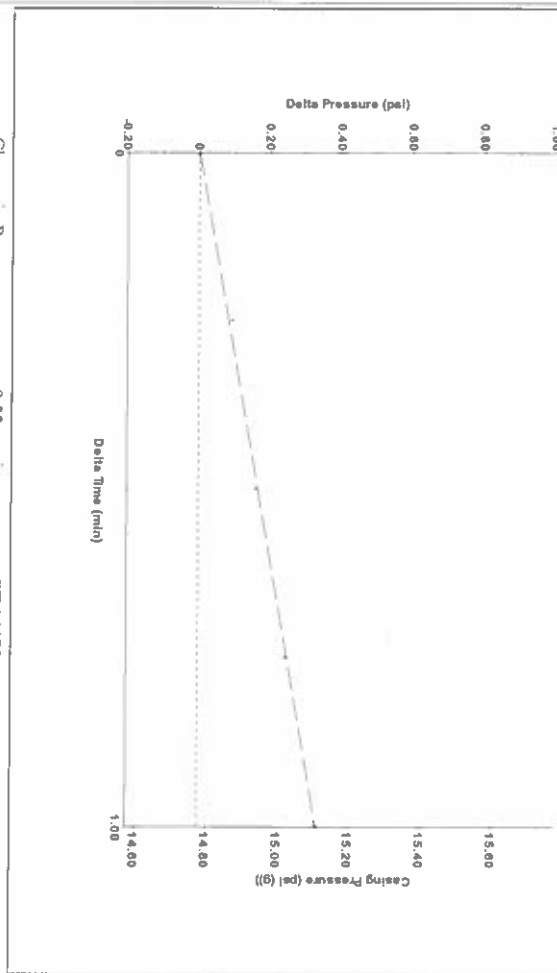


Pump Intake 285.9 psi (g)
Producing BHP 253.8 psi (g)
Static BHP - - - psi (g)

Formation Submergence
Total Gaseous Liquid Column HIT (TVD) 1206 ft
Equivalent Gas Free Liquid HIT (TVD) 797 ft

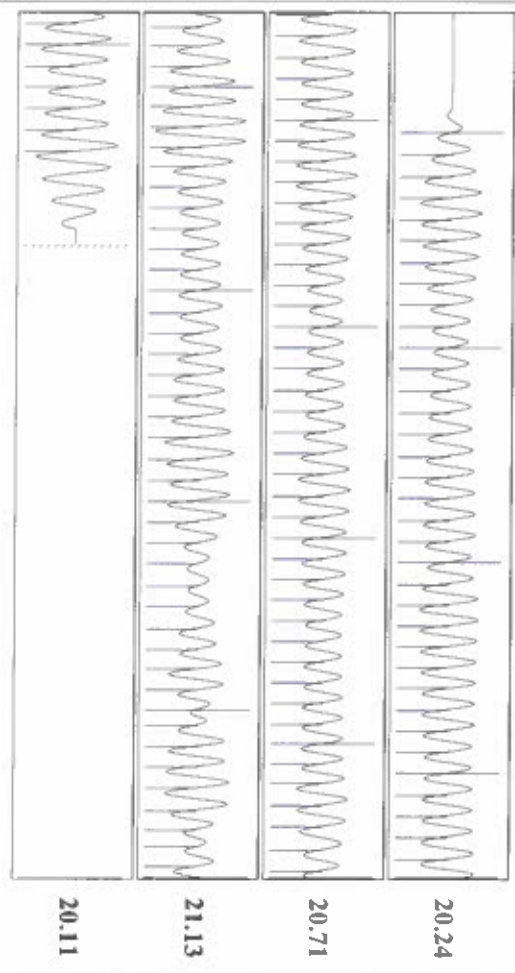
6/15/24

Group: SUBLETTTE Well: Stevens C-2 (acquired on: 06/15/24 13:11:17)



Change in Pressure 0.33 psi
Change in Time 1.00 min
PT 14679
Range 0 - ? psi

Group: SUBLETTTE Well: Stevens C-2 (acquired on: 06/15/24 13:11:17)



Acoustic Velocity 1311.22 ft/s
Joints Per Second 20.6817 jts/sec
Depth to liquid level 4288.99 ft
Automatic Collar Count Yes

Joints counted 125
Joints to liquid level 135.299
Filter Width 18.4918
Time to 1st Collar 0.276

Conservation Division
District Office No. 1
210 E. Frontview, Suite A
Dodge City, KS 67801



Phone: 620-682-7933
<http://kcc.ks.gov/>

Andrew J. French, Chairperson
Dwight D. Keen, Commissioner
Annie Kuether, Commissioner

Laura Kelly, Governor

06/20/2024

Katherine McClurkan
Merit Energy Company, LLC
13727 Noel Road, Suite 1200
Dallas, TX 75240

Re: Temporary Abandonment
API 15-081-21830-00-00
Stevens C 2
NW/4 Sec.13-30S-32W
Haskell County, Kansas

Dear Katherine McClurkan:

"Your temporary abandonment (TA) application for the well listed above has been approved. In accordance with K.A.R. 82-3-111 the TA status of this well will expire 06/20/2025.

- * If you return this well to service or plug it, please notify the District Office.
- * If you sell this well you are required to file a Transfer of Operator form, T-1.
- * If the well will remain temporarily abandoned, you must submit a new TA application, CP-111, before 06/20/2025.

You may contact me at the number above if you have questions.

Very truly yours,

Michael Maier"