

KANSAS CORPORATION COMMISSION
OIL & GAS CONSERVATION DIVISION

TEMPORARY ABANDONMENT WELL APPLICATION

OPERATOR: License#
Name:
Address 1:
Address 2:
City: State: Zip:
Contact Person:
Phone:
Contact Person Email:
Field Contact Person:
Field Contact Person Phone:

API No. 15-
Spot Description:
Sec. Twp. S. R.
GPS Location: Lat: Long:
Datum: NAD27 NAD83 WGS84
County: Elevation:
Lease Name: Well #:
Well Type: Oil Gas OG WSW Other:
SWD Permit #: ENHR Permit #:
Gas Storage Permit #:
Spud Date: Date Shut-In:

Table with 7 columns: Conductor, Surface, Production, Intermediate, Liner, Tubing. Rows include Size, Setting Depth, Amount of Cement, Top of Cement, Bottom of Cement.

Casing Fluid Level from Surface: How Determined? Date:
Casing Squeeze(s): to w / sacks of cement, to w / sacks of cement. Date:
Do you have a valid Oil & Gas Lease? Yes No
Depth and Type: Junk in Hole at Tools in Hole at Casing Leaks: Yes No Depth of casing leak(s):
Type Completion: ALT. I ALT. II Depth of: DV Tool: w / sacks of cement Port Collar: w / sack of cement
Packer Type: Size: Inch Set at: Feet
Total Depth: Plug Back Depth: Plug Back Method:

Geological Date:

Table with 4 columns: Formation Name, Formation Top, Formation Base, Completion Information. Rows 1 and 2.

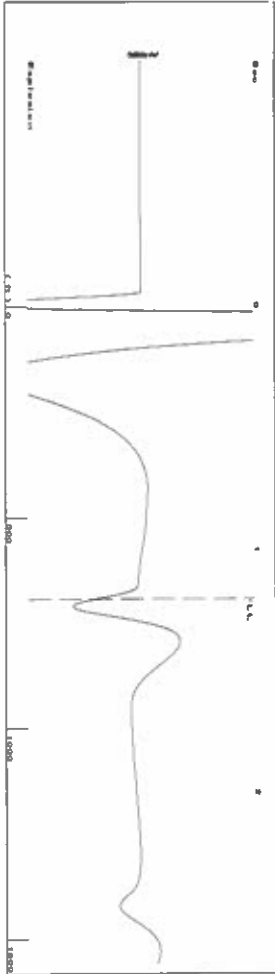
UNDER PENALTY OF PERJURY I HEREBY ATTEST THAT THE INFORMATION CONTAINED HEREIN IS TRUE AND CORRECT TO THE BEST OF MY KNOWLEDGE

Submitted Electronically

Do NOT Write in This Space - KCC USE ONLY
Date Tested: Results: Date Plugged: Date Repaired: Date Put Back in Service:
Review Completed by: Comments:
TA Approved: Yes Denied Date:

Mail to the Appropriate KCC Conservation Office:

Map of Kansas with 4 numbered districts. Table with 2 columns: Office Name/Address, Phone Number.



Time 1.209 sec
 Joints 219298 f/s
 Depth 695.18 ft

Liquid level calculated with
 user supplied Acoustic Velocity

Acoustic Velocity 1150 ft/s

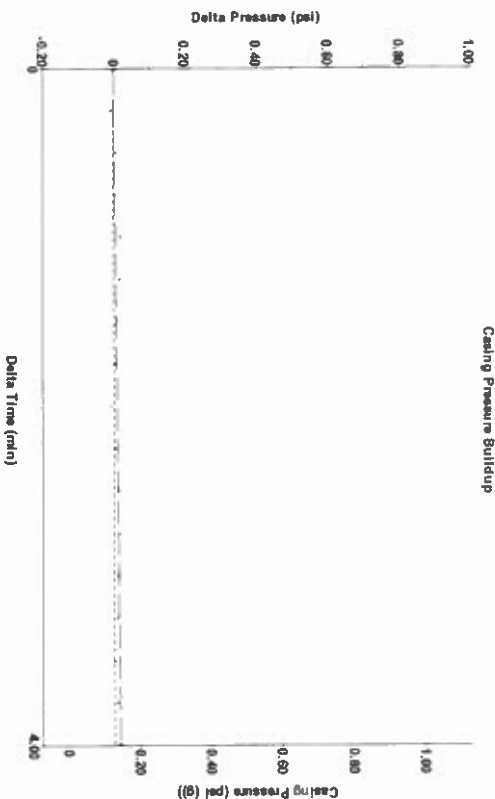
Analysis Method: Acoustic Velocity

Group: Merit Energy Company-Ulysses Well: Johnson 4-L (acquired on: 06/18/24 13:54:20)

Production Current	Potential	Casing Pressure	Producing
Oil - * -	- * - BBL/D	0.1 psi (g)	Annular
Water - * -	- * - BBL/D	Casing Pressure Buildup	Gas Flow
Gas - * -	- * - Mscf/D	0.017 psi	0 Mscf/D
IPR Method	Vogel	4.00 min	% Liquid
PBHP/SBHP	- * -	Gas/Liquid Interface Pressure	100 %
Production Efficiency	0.0	0.4 psi (g)	
		Liquid Level Depth	
Oil 40 deg API		695.18 ft	
Water 1.05 Sp.Gr.H2O		Pump Intake Depth	
Gas 0.85 Sp.Gr.AIR		5750.00 ft	
Acoustic Velocity	1150 ft/s	Formation Depth	
		5744.00 ft	



Formation Submergence
 Total Gaseous Liquid Column HT (TVD) 5055 ft
 Equivalent Gas Free Liquid HT (TVD) 5055 ft
 6/18/24B
 Pump Intake 1604.3 psi (g)
 Producing BHP 1602.6 psi (g)
 Static BHP - * - psi (g)



Change in Pressure 0.02 psi PT18868
 Change in Time 4.00 min Range 0 - ? psi

Group: Merit Energy Company-Ulysses Well: Johnson 4-L (acquired on: 06/18/24 13:54:20)

Entered Acoustic Velocity for Liquid Level depth determination

06/20/2024

Katherine McClurkan
Merit Energy Company, LLC
13727 Noel Road, Suite 1200
Dallas, TX 75240

Re: Temporary Abandonment
API 15-067-21669-00-00
Johnson 4-L8-30-38
SW/4 Sec.08-30S-38W
Grant County, Kansas

Dear Katherine McClurkan:

"Your temporary abandonment (TA) application for the well listed above has been approved. In accordance with K.A.R. 82-3-111 the TA status of this well will expire 06/20/2025.

- * If you return this well to service or plug it, please notify the District Office.
- * If you sell this well you are required to file a Transfer of Operator form, T-1.
- * If the well will remain temporarily abandoned, you must submit a new TA application, CP-111, before 06/20/2025.

You may contact me at the number above if you have questions.

Very truly yours,

Michael Maier"