

KANSAS CORPORATION COMMISSION
OIL & GAS CONSERVATION DIVISION

TEMPORARY ABANDONMENT WELL APPLICATION

OPERATOR: License#
Name:
Address 1:
Address 2:
City: State: Zip:
Contact Person:
Phone:
Contact Person Email:
Field Contact Person:
Field Contact Person Phone:

API No. 15-
Spot Description:
Sec. Twp. S. R.
GPS Location: Lat: Long:
Datum: NAD27 NAD83 WGS84
County: Elevation:
Lease Name: Well #:
Well Type: Oil Gas OG WSW Other:
SWD Permit #: ENHR Permit #:
Gas Storage Permit #:
Spud Date: Date Shut-In:

Table with 7 columns: Conductor, Surface, Production, Intermediate, Liner, Tubing. Rows include Size, Setting Depth, Amount of Cement, Top of Cement, Bottom of Cement.

Casing Fluid Level from Surface: How Determined? Date:
Casing Squeeze(s): to w / sacks of cement, to w / sacks of cement. Date:
Do you have a valid Oil & Gas Lease? Yes No
Depth and Type: Junk in Hole at Tools in Hole at Casing Leaks: Yes No Depth of casing leak(s):
Type Completion: ALT. I ALT. II Depth of: DV Tool: w / sacks of cement Port Collar: w / sack of cement
Packer Type: Size: Inch Set at: Feet
Total Depth: Plug Back Depth: Plug Back Method:

Geological Data:

Table with 4 columns: Formation Name, Formation Top, Formation Base, Completion Information. Rows 1 and 2.

UNDER PENALTY OF PERJURY I HEREBY ATTEST THAT THE INFORMATION CONTAINED HEREIN IS TRUE AND CORRECT TO THE BEST OF MY KNOWLEDGE

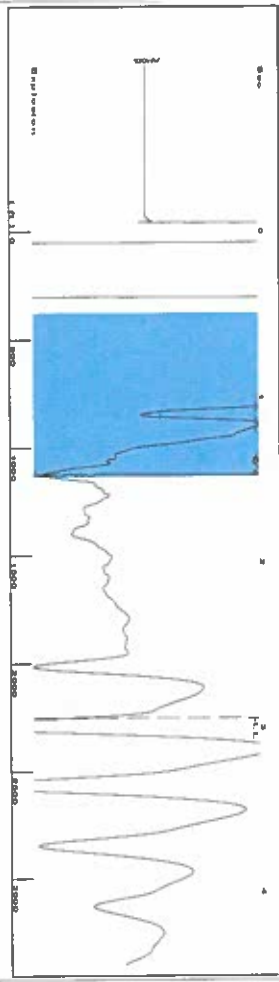
Submitted Electronically

Do NOT Write in This Space - KCC USE ONLY
Date Tested: Results: Date Plugged: Date Repaired: Date Put Back in Service:
Review Completed by: Comments:
TA Approved: Yes Denied Date:

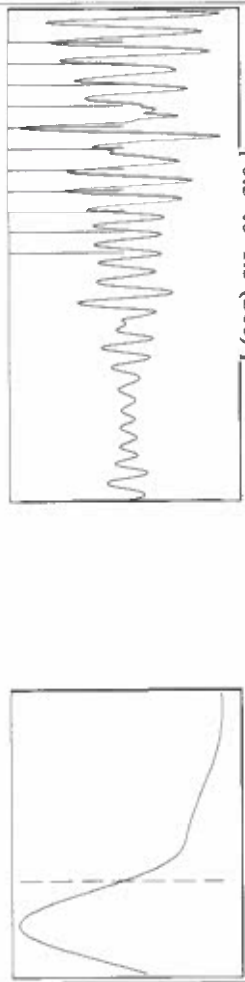
Mail to the Appropriate KCC Conservation Office:

Table with 2 columns: Office Address, Phone. Rows for District Office #1, #2, #3, #4.

Group: Merit Energy Company-Ulysses Well: LBSLU 701 (acquired on: 06/15/24 14:54:17)



0.5 to 1.5 (Sec)

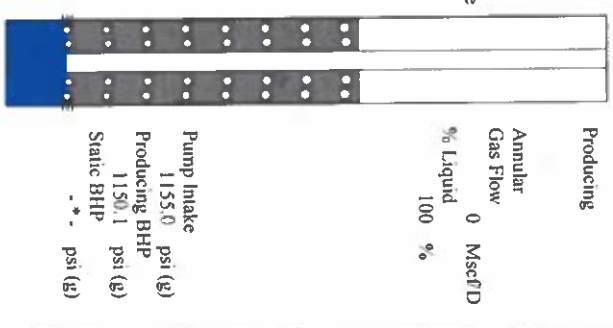


Filter Type High Pass Automatic Collar Count Yes Time 2,947 sec
 Manual Acoustic Velo 1477.86 R/s Manual JTS/sec 23.31 Joints 71,1634 Jis
 Depth 2255.88 ft

Analysis Method: Automatic

Group: Merit Energy Company-Ulysses Well: LBSLU 701 (acquired on: 06/15/24 14:54:17)

Production Current	Potential	Casing Pressure	Producing
Oil *	BBL/D *	0.4 psi (g)	Annular Gas Flow
Water *	BBL/D *	0.0 psi	% Liquid
Gas *	MscFD *	4.00 min	0 MscFD
IPR Method PBHP/SBHP	Vogel	Gas/Liquid Interface Pressure	
Production Efficiency	0.0	1.1 psi (g)	
Oil 40 deg API		Liquid Level Depth	
Water 1.05 Sp.Gr:H2O		2255.88 ft	
Gas 0.55 Sp.Gr:AIR		Pump Intake Depth	
Acoustic Velocity	1530.97 ft/s	5784.00 ft	
		Formation Depth	
		5768.00 ft	



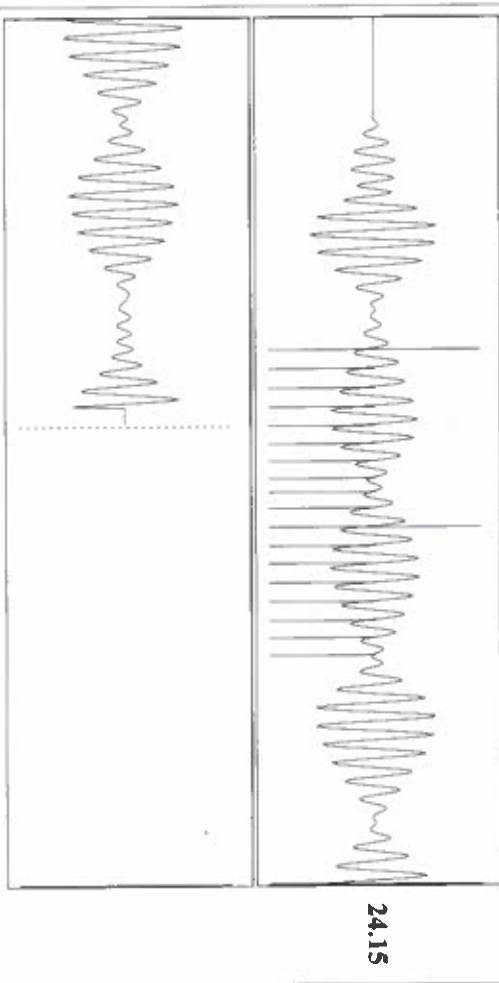
Formation Submergence
 Total Gaseous Liquid Column HT (TVD) 3528 ft
 Equivalent Gas Free Liquid HT (TVD) 3528 ft
 6/15/24

Group: Merit Energy Company-Ulysses Well: LBSLU 701 (acquired on: 06/15/24 14:54:17)



Change in Pressure 0.03 psi PT13868
 Change in Time 4.00 min Range 0 - ? psi

Group: Merit Energy Company-Ulysses Well: LBSLU 701 (acquired on: 06/15/24 14:54:17)



24.15

Acoustic Velocity 1530.97 ft/s Joints counted 17
 Joints Per Second 24.1477 Jis/Sec Joints to liquid level 71,1634
 Depth to liquid level 2255.88 ft Filter Width 21.31
 Automatic Collar Count Yes Time to 1st Collar 1.472

Conservation Division
District Office No. 1
210 E. Frontview, Suite A
Dodge City, KS 67801



Phone: 620-682-7933
<http://kcc.ks.gov/>

Andrew J. French, Chairperson
Dwight D. Keen, Commissioner
Annie Kuether, Commissioner

Laura Kelly, Governor

06/20/2024

Katherine McClurkan
Merit Energy Company, LLC
13727 Noel Road, Suite 1200
Dallas, TX 75240

Re: Temporary Abandonment
API 15-067-21692-00-00
LBSLU 701
SW/4 Sec.17-30S-38W
Grant County, Kansas

Dear Katherine McClurkan:

"Your temporary abandonment (TA) application for the well listed above has been approved. In accordance with K.A.R. 82-3-111 the TA status of this well will expire 06/20/2025.

- * If you return this well to service or plug it, please notify the District Office.
- * If you sell this well you are required to file a Transfer of Operator form, T-1.
- * If the well will remain temporarily abandoned, you must submit a new TA application, CP-111, before 06/20/2025.

You may contact me at the number above if you have questions.

Very truly yours,

Michael Maier"