

**Notice:** Fill out COMPLETELY  
and return to Conservation Division at  
the address below within  
60 days from plugging date.

KANSAS CORPORATION COMMISSION  
OIL & GAS CONSERVATION DIVISION  
**WELL PLUGGING RECORD**  
K.A.R. 82-3-117

Form CP-4

March 2009

Type or Print on this Form

Form must be Signed

All blanks must be Filled

OPERATOR: License #: \_\_\_\_\_

Name: \_\_\_\_\_

Address 1: \_\_\_\_\_

Address 2: \_\_\_\_\_

City: \_\_\_\_\_ State: \_\_\_\_\_ Zip: \_\_\_\_\_ + \_\_\_\_\_

Contact Person: \_\_\_\_\_

Phone: ( \_\_\_\_\_ ) \_\_\_\_\_

Type of Well: (Check one) ☐ Oil Well ☐ Gas Well ☐ OG ☐ D&A ☐ Cathodic☐ Water Supply Well ☐ Other: \_\_\_\_\_ ☐ SWD Permit #: \_\_\_\_\_☐ ENHR Permit #: \_\_\_\_\_ ☐ Gas Storage Permit #: \_\_\_\_\_Is ACO-1 filed? ☐ Yes ☐ No If not, is well log attached? ☐ Yes ☐ No

Producing Formation(s): List All (If needed attach another sheet)

\_\_\_\_\_ Depth to Top: \_\_\_\_\_ Bottom: \_\_\_\_\_ T.D. \_\_\_\_\_

\_\_\_\_\_ Depth to Top: \_\_\_\_\_ Bottom: \_\_\_\_\_ T.D. \_\_\_\_\_

\_\_\_\_\_ Depth to Top: \_\_\_\_\_ Bottom: \_\_\_\_\_ T.D. \_\_\_\_\_

API No. 15 - \_\_\_\_\_

Spot Description: \_\_\_\_\_

\_\_\_\_ - \_\_\_\_ - \_\_\_\_ Sec. \_\_\_\_ Twp. \_\_\_\_ S. R. \_\_\_\_ ☐ East ☐ West\_\_\_\_\_ Feet from ☐ North / ☐ South Line of Section\_\_\_\_\_ Feet from ☐ East / ☐ West Line of Section

Footages Calculated from Nearest Outside Section Corner:

☐ NE ☐ NW ☐ SE ☐ SW

County: \_\_\_\_\_

Lease Name: \_\_\_\_\_ Well #: \_\_\_\_\_

Date Well Completed: \_\_\_\_\_

The plugging proposal was approved on: \_\_\_\_\_ (Date)

by: \_\_\_\_\_ (KCC District Agent's Name)

Plugging Commenced: \_\_\_\_\_

Plugging Completed: \_\_\_\_\_

Show depth and thickness of all water, oil and gas formations.

Oil, Gas or Water Records		Casing Record (Surface, Conductor & Production)			
Formation	Content	Casing	Size	Setting Depth	Pulled Out

Describe in detail the manner in which the well is plugged, indicating where the mud fluid was placed and the method or methods used in introducing it into the hole. If cement or other plugs were used, state the character of same depth placed from (bottom), to (top) for each plug set.

Plugging Contractor License #: \_\_\_\_\_ Name: \_\_\_\_\_

Address 1: \_\_\_\_\_ Address 2: \_\_\_\_\_

City: \_\_\_\_\_ State: \_\_\_\_\_ Zip: \_\_\_\_\_ + \_\_\_\_\_

Phone: ( \_\_\_\_\_ ) \_\_\_\_\_

Name of Party Responsible for Plugging Fees: \_\_\_\_\_

State of \_\_\_\_\_ County, \_\_\_\_\_, ss.

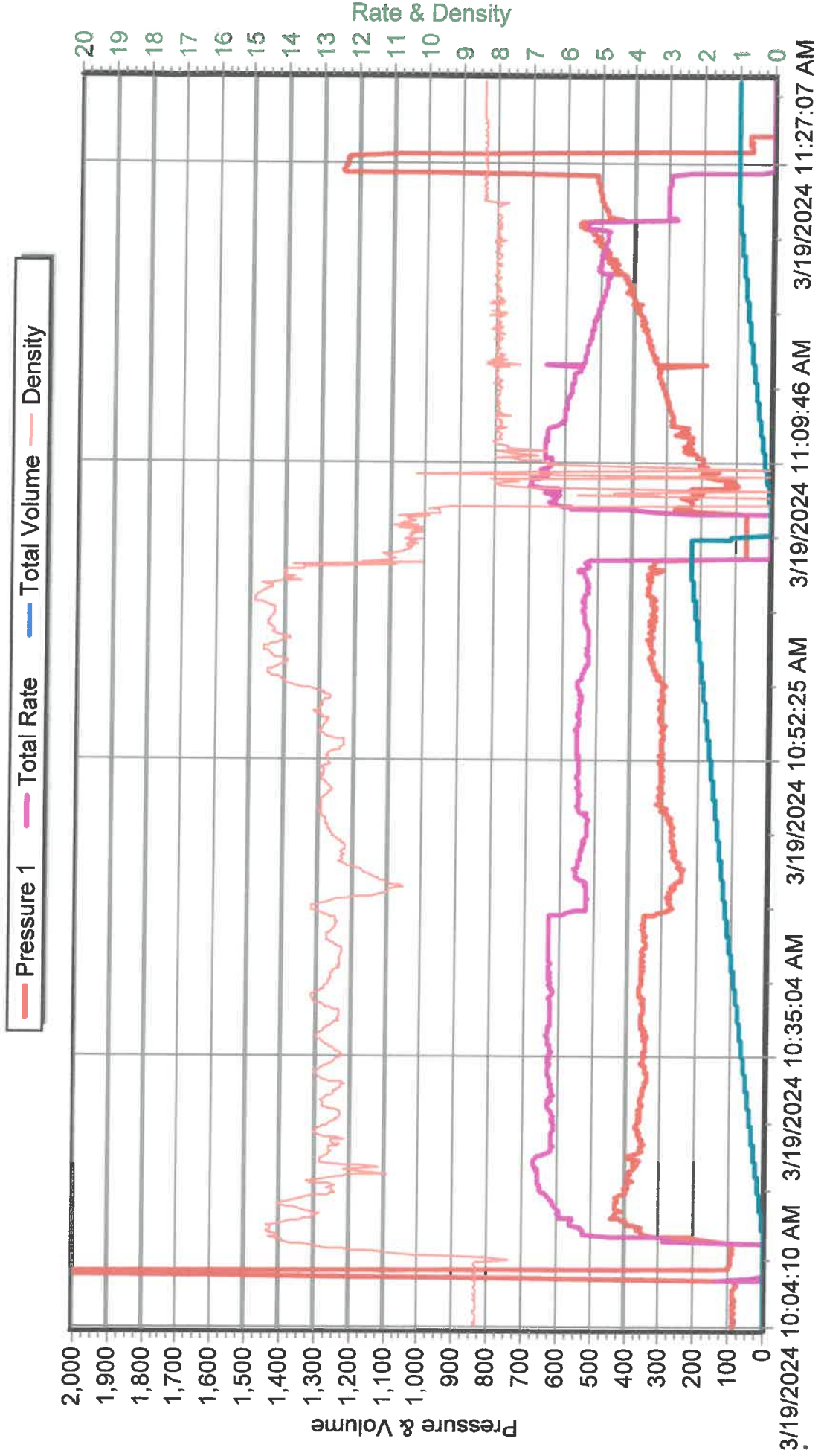
\_\_\_\_\_  
(Print Name) ☐ Employee of Operator or ☐ Operator on above-described well,

being first duly sworn on oath, says: That I have knowledge of the facts statements, and matters herein contained, and the log of the above-described well is as filed, and the same are true and correct, so help me God.

Submitted Electronically



**O BRIEN ENERGY RESOURCES CORP**  
**PREEDY EAST #5-3**  
**8.625" SURFACE**  
**03/19/2024**





# QUASAR ENERGY SERVICES, INC.

3288 FM 51

Gainesville, Texas 76240

Office: 940-612-3336

Fax: 940-612-3336 | qesi@qeserve.com

Form 185-2N

3/31/24

CEMENTING JOB LOG

## CEMENTING JOB LOG

<b>Company:</b> OBRIEN ENERGY RESOURCES CORP				<b>Well Name:</b> PREEDY EAST 5-3			
<b>Type Job:</b> PLUG/PTA				<b>AFE #:</b> 0			
<b>CASING DATA</b>							
<b>Size:</b> 8 5/8		<b>Grade:</b> J-55		<b>Weight:</b> 0			
<b>Casing Depths</b>		<b>Top:</b> 0		<b>Bottom:</b> 0			
<b>Drill Pipe:</b>		<b>Size:</b> 4 1/2		<b>Weight:</b> 16.6			
<b>Tubing:</b>		<b>Size:</b> 0		<b>Weight:</b> 0		<b>Grade:</b> 0	
<b>Open Hole:</b>		<b>Size:</b> 7 7/8		<b>T.D. (ft):</b> 0		<b>TD (ft):</b> 0	
<b>Perforations</b>		<b>From (ft):</b> 0		<b>To:</b> 0		<b>Packer Depth(ft):</b> 0	
<b>CEMENT DATA</b>							
<b>Spacer Type:</b>							
<b>Amt.</b>		<b>Sks Yield</b>		<b>ft<sup>3</sup>/sk</b>		<b>Density (PPG)</b>	
<b>LEAD:</b>		CLASS A 60/40/4				Excess	
<b>Amt.</b>	175	<b>Sks Yield</b>	1.5	<b>ft<sup>3</sup>/sk</b>	262.5	<b>Density (PPG)</b>	13.51
<b>TAIL:</b>						Excess	
<b>Amt.</b>		<b>Sks Yield</b>		<b>ft<sup>3</sup>/sk</b>		<b>Density (PPG)</b>	
<b>WATER:</b>							
<b>Lead:</b>		<b>gals/sk:</b>		<b>Tail:</b>		<b>gals/sk:</b>	
<b>Pump Trucks Used:</b>		DP04					
<b>Bulk Equipment:</b>		660 21					
<b>Disp. Fluid Type:</b> MUD		<b>Amt. (Bbls.)</b>				<b>Weight (PPG):</b>	8.6
<b>Mud Type:</b>						<b>Weight (PPG):</b>	
<b>COMPANY REPRESENTATIVE:</b>				<b>CEMENTER:</b> ANGEL ECHEVARRIA			
<b>TIME</b>	<b>PRESSURES PSI</b>			<b>FLUID PUMPED DATA</b>		<b>REMARKS</b>	
<b>AM/PM</b>	<b>Casing</b>	<b>Tubing</b>	<b>ANNULUS</b>	<b>TOTAL</b>	<b>RATE</b>		
1530						ON LOCATION - RIG UP - SAFETY MEETING	
1610	110			10	6	PUMP H2O	
	ZERO			13.3	6	PUMP 50SX @ 2160'	
	ZERO			3.5	6	PUMP H2O	
	ZERO			23.7	6	DISPLACE W/ MUD	
1630						TRIP OUT DP	
1650	110			10		PUMP H2O	
	ZERO			13.3slurry		PUMP 50SX @ 1620'	
	ZERO			3.5		PUMP H2O	
	ZERO			16.2		DISPLACE W/ MUD	
1710						TRIP OUT DP	
	100			15		PUMP H2O	
	ZERO			10.6slurry		PUMP 40SX @480'	
	ZERO			4.2		DISPLACE W/ H2O	
1755						TRIP OUT DP	
1810	100					FILL WELL H2O	
	ZERO			5.3slurry		PUMP 20SX @60' TO SURFACE	
	ZERO			8slurry		PUMP 30SX RAT	
	ZERO			5.3slurry		PUMP 20SX MOUSE	
1835						JOB COMPLETED	
						THANK YOU	

# PREEDY EAST 5-3 PTA

