

KANSAS CORPORATION COMMISSION
OIL & GAS CONSERVATION DIVISION

TEMPORARY ABANDONMENT WELL APPLICATION

OPERATOR: License#
Name:
Address 1:
Address 2:
City: State: Zip:
Contact Person:
Phone:
Contact Person Email:
Field Contact Person:
Field Contact Person Phone:

API No. 15-
Spot Description:
Sec. Twp. S. R.
GPS Location: Lat: Long:
Datum: NAD27 NAD83 WGS84
County: Elevation:
Lease Name: Well #:
Well Type: Oil Gas OG WSW Other:
SWD Permit #: ENHR Permit #:
Gas Storage Permit #:
Spud Date: Date Shut-In:

Table with 7 columns: Conductor, Surface, Production, Intermediate, Liner, Tubing. Rows include Size, Setting Depth, Amount of Cement, Top of Cement, Bottom of Cement.

Casing Fluid Level from Surface: How Determined? Date:
Casing Squeeze(s): to w / sacks of cement, to w / sacks of cement. Date:
Do you have a valid Oil & Gas Lease? Yes No
Depth and Type: Junk in Hole at Tools in Hole at Casing Leaks: Yes No Depth of casing leak(s):
Type Completion: ALT. I ALT. II Depth of: DV Tool: w / sacks of cement Port Collar: w / sack of cement
Packer Type: Size: Inch Set at: Feet
Total Depth: Plug Back Depth: Plug Back Method:

Geological Date:

Table with 4 columns: Formation Name, Formation Top, Formation Base, Completion Information. Rows 1 and 2.

UNDER PENALTY OF PERJURY I HEREBY ATTEST THAT THE INFORMATION CONTAINED HEREIN IS TRUE AND CORRECT TO THE BEST OF MY KNOWLEDGE

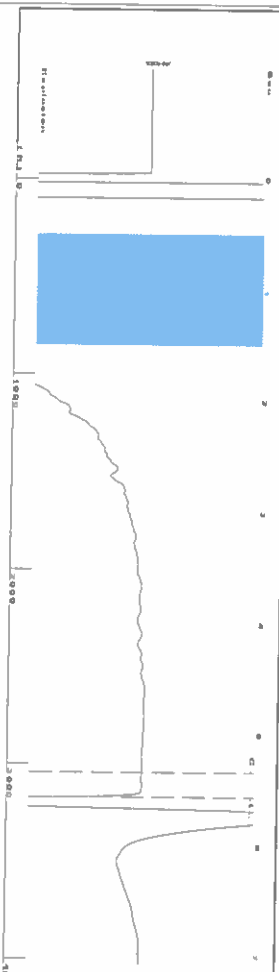
Submitted Electronically

Do NOT Write in This Space - KCC USE ONLY
Date Tested: Results: Date Plugged: Date Repaired: Date Put Back in Service:
Review Completed by: Comments:
TA Approved: Yes Denied Date:

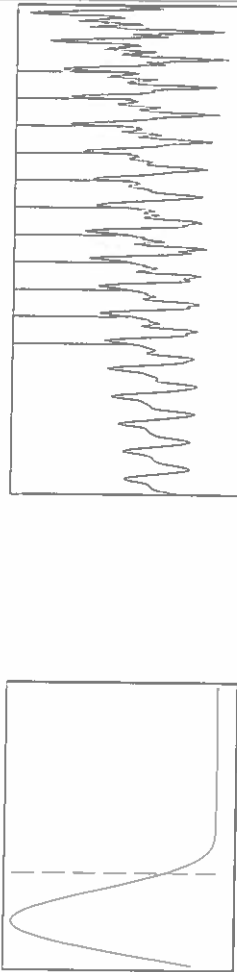
Mail to the Appropriate KCC Conservation Office:

Table with 2 columns: Office Address, Phone. Rows for District Office #1, #2, #3, #4.

Group: SUBLETTE Well: Batman B-1 (acquired on: 06/25/24 14:51:31)



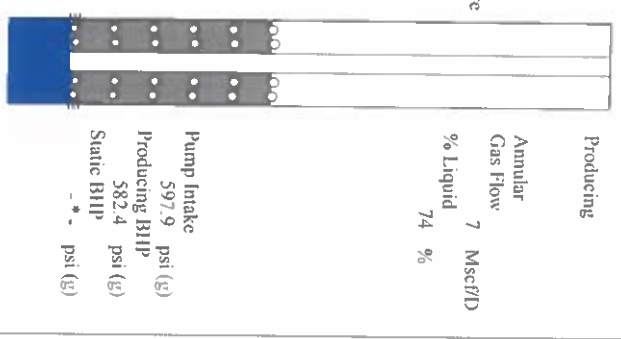
0.5 to 1.5 (Sec)



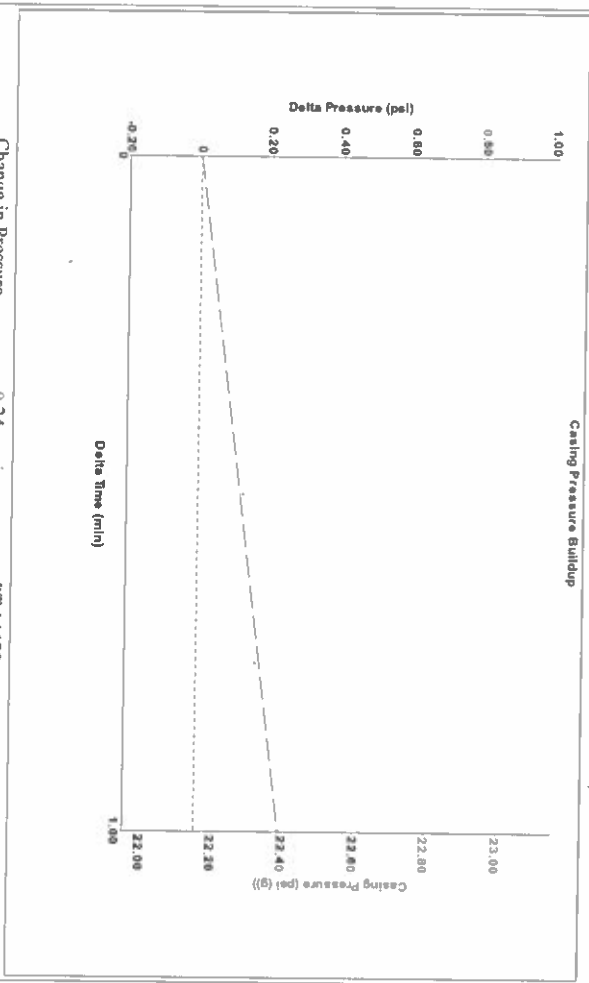
Analysis Method: Automatic

Group: SUBLETTE Well: Batman B-1 (acquired on: 06/25/24 14:51:31)

Production Current	Potential	Casing Pressure	Producing
Oil -*-	-*- BBL/D	22.2 psi (g)	Annular Gas Flow
Water -*-	-*- BBL/D	Casing Pressure Buildup	7 Mscf/D
Gas -*-	-*- Mscf/D	0.2 psi	% Liquid
IPR Method	Vogel	Gas/Liquid Interface Pressure	
PBHP/SBHP	-*-	1.00 min	
Production Efficiency	-*-	25.7 psi (g)	
Oil 40 deg API		Liquid Level Depth	
Water 1.05 Sp.Gr:H2O		3168.16 ft	
Gas 0.84 Sp.Gr:AIR		Pump Intake Depth	
Acoustic Velocity	1138.4 ft/s	5465.00 ft	
		Formation Depth	
		5417.00 ft	
Formation Submergence			
Total Gaseous Liquid Column HT (TVD)	2297 ft		
Equivalent Gas Free Liquid HT (TVD)	1711 ft		
6/25/24			



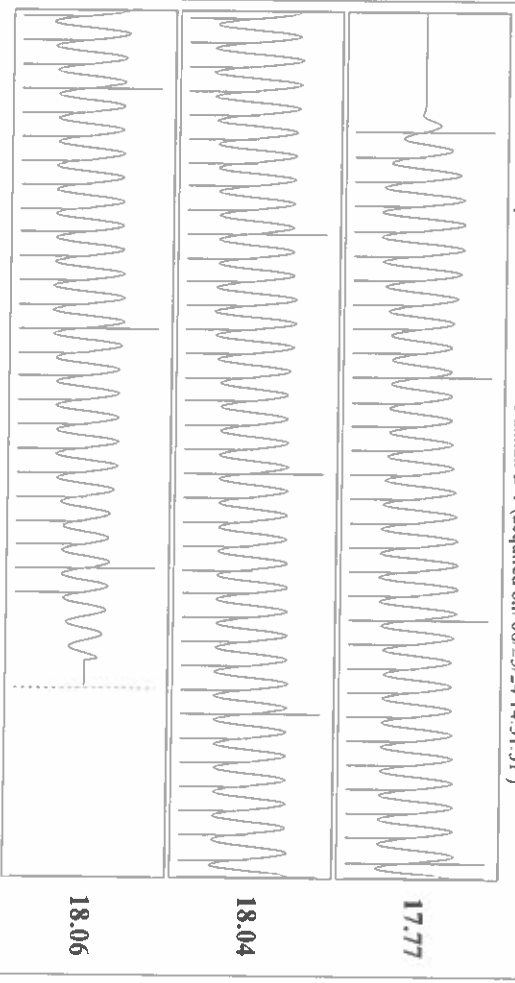
Group: SUBLETTE Well: Batman B-1 (acquired on: 06/25/24 14:51:31)



Change in Pressure 0.24 psi
Change in Time 1.00 min

PT 14679
Range 0 - ? psi

Group: SUBLETTE Well: Batman B-1 (acquired on: 06/25/24 14:51:31)



Acoustic Velocity	1138.4 ft/s	Joints counted	91
Joints Per Second	17.9558 ft/sec	Joints to liquid level	99.942
Depth to liquid level	3168.16 ft	Filter Width	15.9211
Automatic Collar Count	Yes	Time to 1st Collar	0.276

Conservation Division
District Office No. 1
210 E. Frontview, Suite A
Dodge City, KS 67801



Phone: 620-682-7933
<http://kcc.ks.gov/>

Andrew J. French, Chairperson
Dwight D. Keen, Commissioner
Annie Kuether, Commissioner

Laura Kelly, Governor

06/27/2024

Katherine McClurkan
Merit Energy Company, LLC
13727 Noel Road, Suite 1200
Dallas, TX 75240-7362

Re: Temporary Abandonment
API 15-081-22013-00-00
Batman B 1
NE/4 Sec.10-28S-33W
Haskell County, Kansas

Dear Katherine McClurkan:

"Your temporary abandonment (TA) application for the well listed above has been approved. In accordance with K.A.R. 82-3-111 the TA status of this well will expire 06/27/2025.

- * If you return this well to service or plug it, please notify the District Office.
- * If you sell this well you are required to file a Transfer of Operator form, T-1.
- * If the well will remain temporarily abandoned, you must submit a new TA application, CP-111, before 06/27/2025.

You may contact me at the number above if you have questions.

Very truly yours,

Michael Maier"