

KANSAS CORPORATION COMMISSION
OIL & GAS CONSERVATION DIVISION

TEMPORARY ABANDONMENT WELL APPLICATION

OPERATOR: License#
Name:
Address 1:
Address 2:
City: State: Zip:
Contact Person:
Phone:
Contact Person Email:
Field Contact Person:
Field Contact Person Phone:

API No. 15-
Spot Description:
Sec. Twp. S. R.
GPS Location: Lat: Long:
Datum: NAD27 NAD83 WGS84
County: Elevation:
Lease Name: Well #:
Well Type: Oil Gas OG WSW Other:
SWD Permit #: ENHR Permit #:
Gas Storage Permit #:
Spud Date: Date Shut-In:

Table with 7 columns: Conductor, Surface, Production, Intermediate, Liner, Tubing. Rows include Size, Setting Depth, Amount of Cement, Top of Cement, Bottom of Cement.

Casing Fluid Level from Surface: How Determined? Date:
Casing Squeeze(s): to w / sacks of cement, to w / sacks of cement. Date:
Do you have a valid Oil & Gas Lease? Yes No
Depth and Type: Junk in Hole at Tools in Hole at Casing Leaks: Yes No Depth of casing leak(s):
Type Completion: ALT. I ALT. II Depth of: DV Tool: w / sacks of cement Port Collar: w / sack of cement
Packer Type: Size: Inch Set at: Feet
Total Depth: Plug Back Depth: Plug Back Method:

Geological Data:

Table with 4 columns: Formation Name, Formation Top, Formation Base, Completion Information. Rows 1 and 2.

UNDER PENALTY OF PERJURY I HEREBY ATTEST THAT THE INFORMATION CONTAINED HEREIN IS TRUE AND CORRECT TO THE BEST OF MY KNOWLEDGE

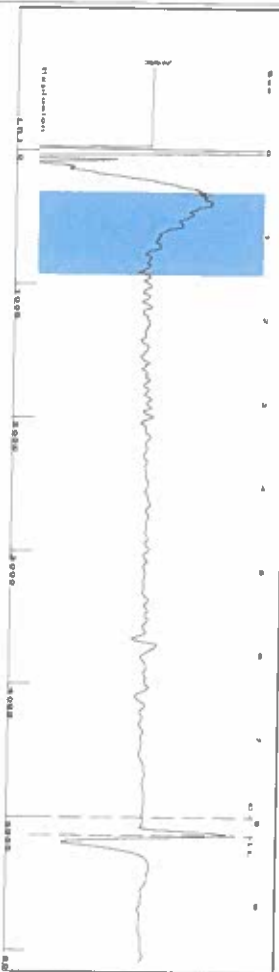
Submitted Electronically

Do NOT Write in This Space - KCC USE ONLY
Date Tested: Results: Date Plugged: Date Repaired: Date Put Back in Service:
Review Completed by: Comments:
TA Approved: Yes Denied Date:

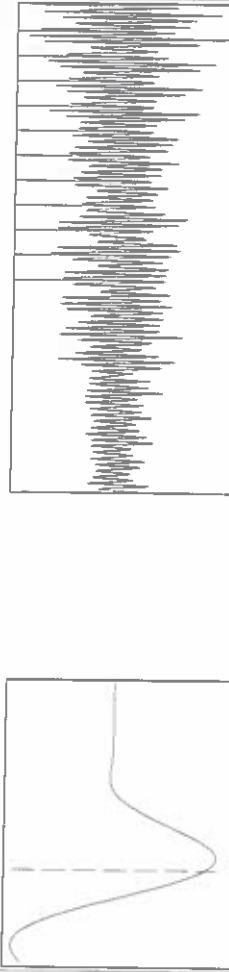
Mail to the Appropriate KCC Conservation Office:

Map of Kansas with 4 numbered districts and corresponding office addresses and phone numbers.

Group: SUBLETTE Well: Stalker 30K (acquired on: 06/25/24 11:47:17)



Filter Type: High Pass
 Manual Acoustic Velocity: 1245.58 ft/s
 Automatic Collar Count: Yes
 Manual JTS/sec: 19.6464
 Time: 8.178 sec
 Joints: 161.941 Jts
 Depth: 5133.52 ft

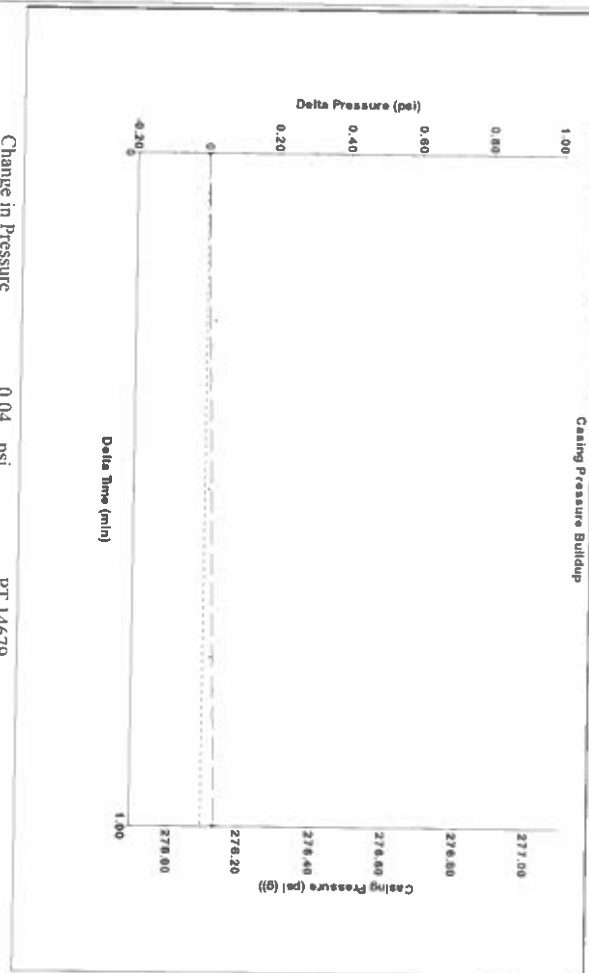


Analysis Method: Automatic

Group: SUBLETTE Well: Stalker 30K (acquired on: 06/25/24 11:47:17)

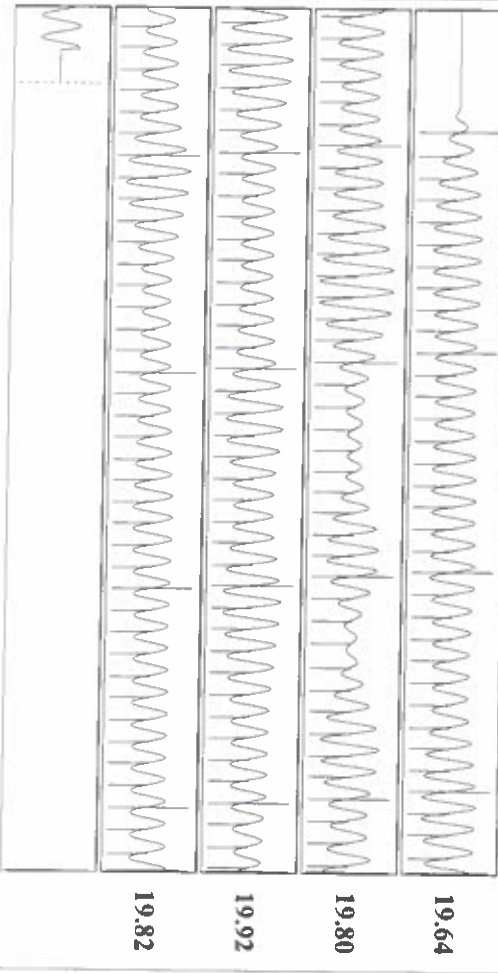
Production Current	Potential	Casing Pressure	Producing
Oil: 40 deg API	BBL/D	276.1 psi (g)	Annular Gas Flow
Water: 1.05 Sp.Gr:120	BBL/D	Casing Pressure Buildup	2 Mscf/D
Gas: 0.72 Sp.Gr:AIR	Mscf/D	0.037 psi	% Liquid
IPR Method: PBHP/SBHP	Vogel	1.00 min	100 %
Production Efficiency: 0.0	Mscf/D	Gas/Liquid Interface Pressure: 315.9 psi (g)	
Acoustic Velocity: 1255.45 ft/s		Liquid Level Depth: 5133.52 ft	
Formation Submergence		Pump Intake Depth: 5167.00 ft	
Total Gaseous Liquid Column HIT (TVID): 33 ft		Formation Depth: 5103.00 ft	
Equivalent Gas Free Liquid HIT (TVID): 33 ft			
6/25/24			

Group: SUBLETTE Well: Stalker 30K (acquired on: 06/25/24 11:47:17)



Change in Pressure: 0.04 psi
 Change in Time: 1.00 min
 PT: 14679
 Range: 0 - 2 psi

Group: SUBLETTE Well: Stalker 30K (acquired on: 06/25/24 11:47:17)



Acoustic Velocity	1255.45 ft/s	Joints counted	152
Joints Per Second	19.802 Jts/sec	Joints to liquid level	161.941
Depth to liquid level	5133.52 ft	Filter Width	17.6464
Automatic Collar Count	Yes	Time to 1st Collar	0.284
			21.6464
			7.96

Conservation Division
District Office No. 1
210 E. Frontview, Suite A
Dodge City, KS 67801



Phone: 620-682-7933
<http://kcc.ks.gov/>

Andrew J. French, Chairperson
Dwight D. Keen, Commissioner
Annie Kuether, Commissioner

Laura Kelly, Governor

06/27/2024

Katherine McClurkan
Merit Energy Company, LLC
13727 Noel Road, Suite 1200
Dallas, TX 75240-7362

Re: Temporary Abandonment
API 15-081-21620-00-00
Stalker ET AL 30-K30-30-33
SW/4 Sec.30-30S-33W
Haskell County, Kansas

Dear Katherine McClurkan:

"Your temporary abandonment (TA) application for the well listed above has been approved. In accordance with K.A.R. 82-3-111 the TA status of this well will expire 06/27/2025.

- * If you return this well to service or plug it, please notify the District Office.
- * If you sell this well you are required to file a Transfer of Operator form, T-1.
- * If the well will remain temporarily abandoned, you must submit a new TA application, CP-111, before 06/27/2025.

You may contact me at the number above if you have questions.

Very truly yours,

Michael Maier"