

KANSAS CORPORATION COMMISSION
OIL & GAS CONSERVATION DIVISION

TEMPORARY ABANDONMENT WELL APPLICATION

OPERATOR: License#
Name:
Address 1:
Address 2:
City: State: Zip:
Contact Person:
Phone:
Contact Person Email:
Field Contact Person:
Field Contact Person Phone:

API No. 15-
Spot Description:
Sec. Twp. S. R.
GPS Location: Lat: Long:
Datum: NAD27 NAD83 WGS84
County: Elevation:
Lease Name: Well #:
Well Type: Oil Gas OG WSW Other:
SWD Permit #: ENHR Permit #:
Gas Storage Permit #:
Spud Date: Date Shut-In:

Table with 7 columns: Conductor, Surface, Production, Intermediate, Liner, Tubing. Rows include Size, Setting Depth, Amount of Cement, Top of Cement, Bottom of Cement.

Casing Fluid Level from Surface: How Determined? Date:
Casing Squeeze(s): to w / sacks of cement, to w / sacks of cement. Date:
Do you have a valid Oil & Gas Lease? Yes No
Depth and Type: Junk in Hole at Tools in Hole at Casing Leaks: Yes No Depth of casing leak(s):
Type Completion: ALT. I ALT. II Depth of: DV Tool: w / sacks of cement Port Collar: w / sack of cement
Packer Type: Size: Inch Set at: Feet
Total Depth: Plug Back Depth: Plug Back Method:

Geological Data:

Table with 4 columns: Formation Name, Formation Top, Formation Base, Completion Information. Rows 1 and 2.

UNDER PENALTY OF PERJURY I HEREBY ATTEST THAT THE INFORMATION CONTAINED HEREIN IS TRUE AND CORRECT TO THE BEST OF MY KNOWLEDGE

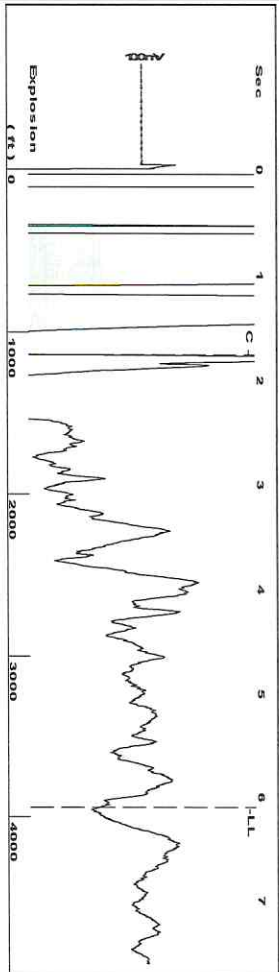
Submitted Electronically

Do NOT Write in This Space - KCC USE ONLY
Date Tested: Results: Date Plugged: Date Repaired: Date Put Back in Service:
Review Completed by: Comments:
TA Approved: Yes Denied Date:

Mail to the Appropriate KCC Conservation Office:

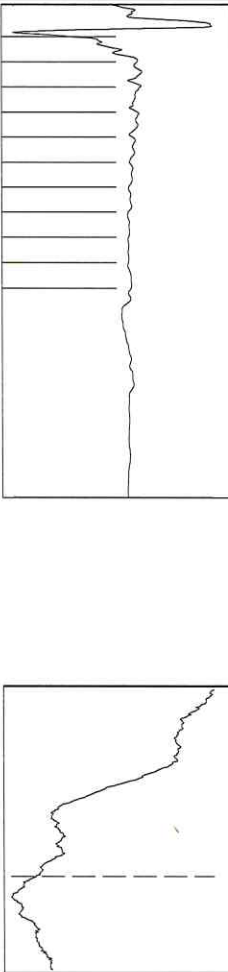
Map of Kansas with 4 numbered districts. Table with 3 columns: District, Address, Phone. Rows 1-4.

Group: Atlas Well: Wyant and Sanders West 1-4 (acquired on: 06/21/24 11:21:52)



Filter Type High Pass Automatic Collar Count Yes
 Manual Acoustic Velo 1245.58 ft/s Manual JTS/sec 19.6464
 Time 6.103 sec
 Joints 124.382 Jts
 Depth 3942.90 ft

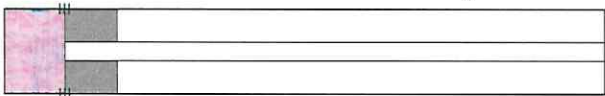
0.5 to 1.5 (Sec) |



Analysis Method: Automatic

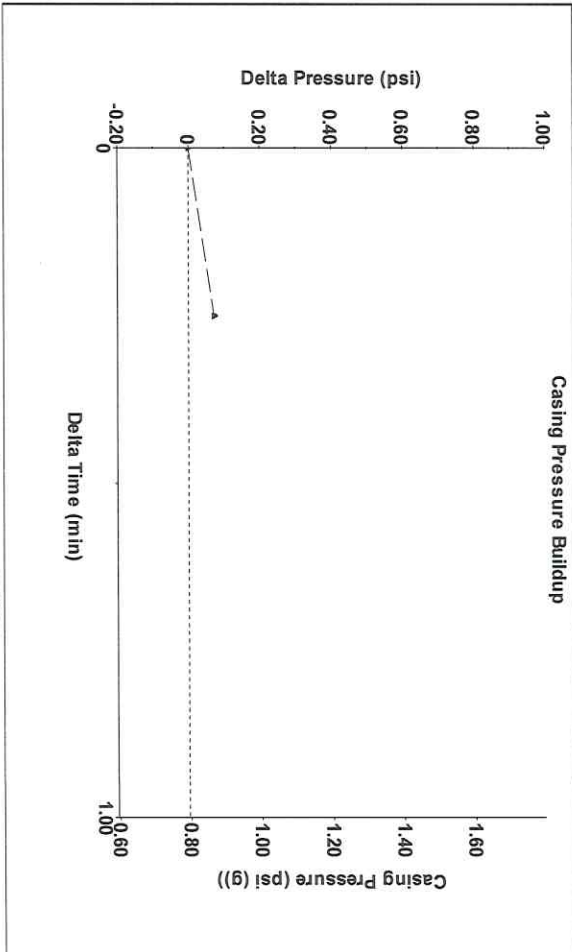
Group: Atlas Well: Wyant and Sanders West 1-4 (acquired on: 06/21/24 11:21:52)

Production	Potential	Casing Pressure	Static
Current	BBL/D	0.8 psi (g)	Oil Column Height
Oil	BBL/D	0.072 psi	MID 0 ft
Water	Misc/D	0.25 min	Gas/Liquid Interface Pressure
Gas		2.3 psi (g)	Liquid Level Depth
IPR Method	Vogel		3942.90 ft
PBHP/SBHP			Water Column Height
Production Efficiency			MD 483 ft
Oil 40 deg API			Pump Intake Depth
Water 1.05 Sp.Gt:H2O			4435.00 ft
Gas 0.71 Sp.Gt:AIR			Formation Depth
Acoustic Velocity	1292.12 ft/s		4435.00 ft



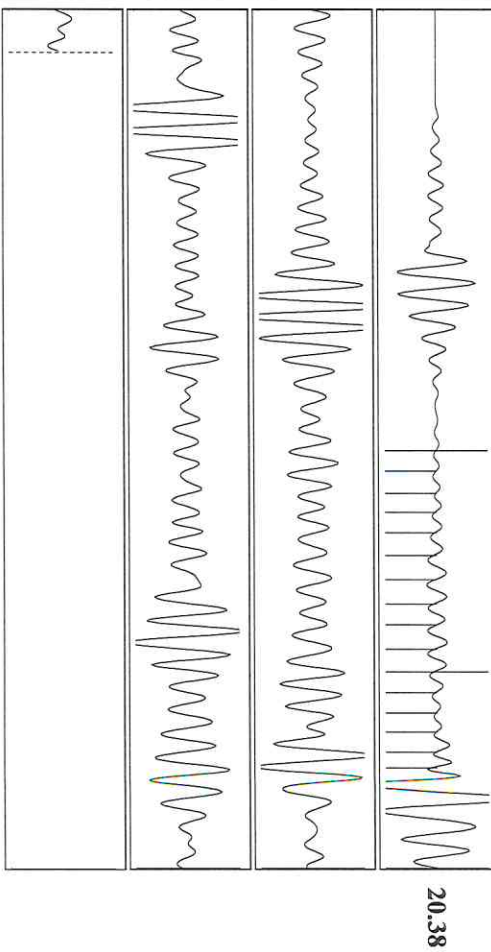
Acoustic Test

Group: Atlas Well: Wyant and Sanders West 1-4 (acquired on: 06/21/24 11:21:52)



Change in Pressure 0.07 psi PT4212
 Change in Time 0.25 min Range 0 - ? psi

Group: Atlas Well: Wyant and Sanders West 1-4 (acquired on: 06/21/24 11:21:52)



Acoustic Velocity 1292.12 ft/s Joints counted 15
 Joints Per Second 20.3804 Jts/sec 124.382
 Depth to liquid level 3942.9 ft Filter Width 17.6464
 Automatic Collar Count Yes Time to 1st Collar 1.024

20.38

Conservation Division
District Office No. 2
3450 N. Rock Road
Building 600, Suite 601
Wichita, KS 67226



Phone: 316-337-7400
<http://kcc.ks.gov/>

Andrew J. French, Chairperson
Dwight D. Keen, Commissioner
Annie Kuether, Commissioner

Laura Kelly, Governor

07/02/2024

Saumyadeep Halder
Atlas Operating LLC
1900 SAINT JAMES PLACE
HOUSTON, TX 77056-4133

Re: Temporary Abandonment
API 15-077-21520-00-00
WYANT AND SANDERS WEST 1-4
SE/4 Sec.04-31S-08W
Harper County, Kansas

Dear Saumyadeep Halder:

Your application for Temporary Abandonment (TA) for the above-listed well is denied for the following reasons(s):

Incorrect Shut-in Date

Pursuant to K.A.R. 82-3-111, the well must be plugged, or returned to service, or obtain temporary abandonment status by 08/01/2024.

This deadline does NOT override any compliance deadline given to you in any Commission Order.

You may contact me if you have any questions.

Sincerely,
Neil Lake, ECRS
KCC DISTRICT 2