

KANSAS CORPORATION COMMISSION
OIL & GAS CONSERVATION DIVISION

TEMPORARY ABANDONMENT WELL APPLICATION

OPERATOR: License#
Name:
Address 1:
Address 2:
City: State: Zip:
Contact Person:
Phone:
Contact Person Email:
Field Contact Person:
Field Contact Person Phone:

API No. 15-
Spot Description:
Sec. Twp. S. R.
GPS Location: Lat: Long:
Datum: NAD27 NAD83 WGS84
County: Elevation:
Lease Name: Well #:
Well Type: Oil Gas OG WSW Other:
SWD Permit #: ENHR Permit #:
Gas Storage Permit #:
Spud Date: Date Shut-In:

Table with 7 columns: Conductor, Surface, Production, Intermediate, Liner, Tubing. Rows include Size, Setting Depth, Amount of Cement, Top of Cement, Bottom of Cement.

Casing Fluid Level from Surface: How Determined? Date:
Casing Squeeze(s): to w / sacks of cement, to w / sacks of cement. Date:
Do you have a valid Oil & Gas Lease? Yes No
Depth and Type: Junk in Hole at Tools in Hole at Casing Leaks: Yes No Depth of casing leak(s):
Type Completion: ALT. I ALT. II Depth of: DV Tool: w / sacks of cement Port Collar: w / sack of cement
Packer Type: Size: Inch Set at: Feet
Total Depth: Plug Back Depth: Plug Back Method:

Geological Data:

Table with 4 columns: Formation Name, Formation Top, Formation Base, Completion Information. Rows 1 and 2.

UNDER PENALTY OF PERJURY I HEREBY ATTEST THAT THE INFORMATION CONTAINED HEREIN IS TRUE AND CORRECT TO THE BEST OF MY KNOWLEDGE

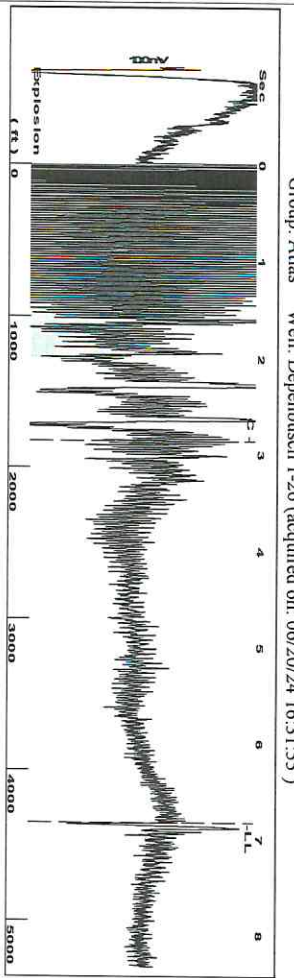
Submitted Electronically

Do NOT Write in This Space - KCC USE ONLY
Date Tested: Results: Date Plugged: Date Repaired: Date Put Back in Service:
Review Completed by: Comments:
TA Approved: Yes Denied Date:

Mail to the Appropriate KCC Conservation Office:

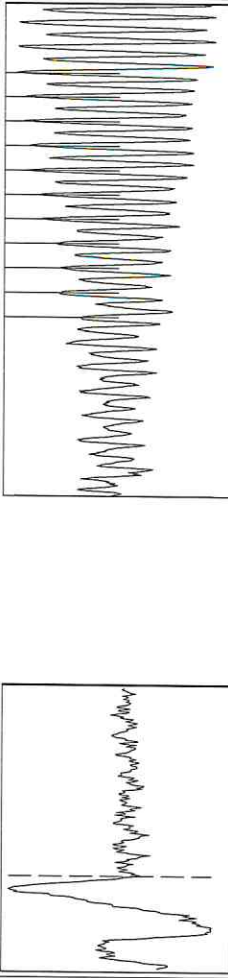
Table with 2 columns: Office Address, Phone. Rows for District Office #1, #2, #3, #4.

Group: Atlas Well: Deppenbusch 1-26 (acquired on: 06/20/24 16:31:55)



Filter Type High Pass
 Manual Acoustic Velo 1278.23 f/s
 Automatic Collar Count Yes
 Manual JTS/sec 20.1613
 Time 6.833 sec
 Joints 137.294 Jts
 Depth 4352.21 ft

1.0 to 2.0 (Sec) |



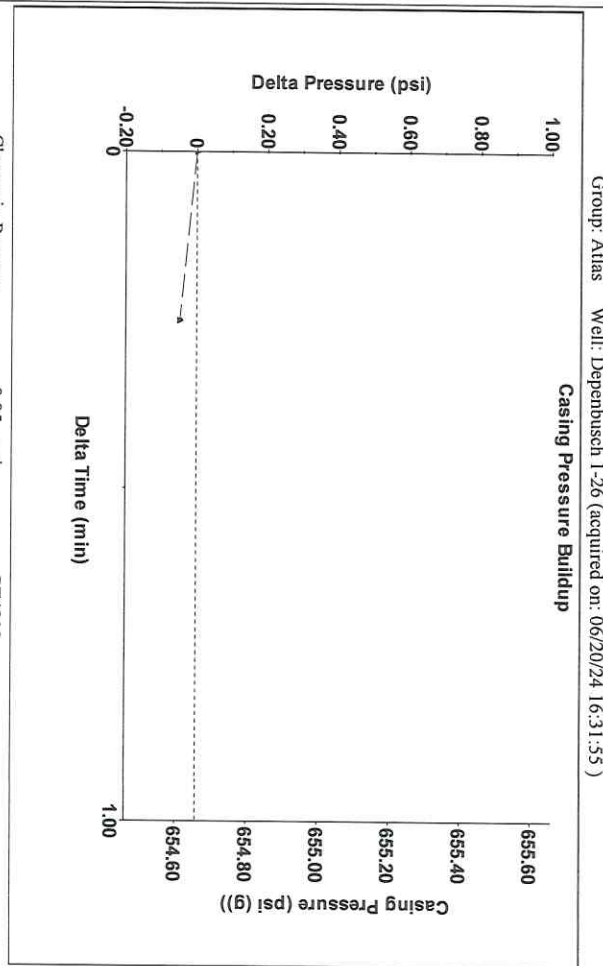
Analysis Method: Automatic

Group: Atlas Well: Deppenbusch 1-26 (acquired on: 06/20/24 16:31:55)

Production	Potential	Casing Pressure	Static
Current	-*- BBL/D	654.7 psi (g)	Oil Column Height
Oil	-*- BBL/D	-0.048 psi	MD 0 ft
Water	-*- Misc/D	0.25 min	Water Column Height
Gas	-*-	731.0 psi (g)	MD -*- ft
IPR Method	Vogel	Gas/Liquid Interface Pressure	
PBHP/SBHP	-*-	731.0 psi (g)	
Production Efficiency	0.0		
Oil	40 deg API	Liquid Level Depth	
Water	1.05 Sp.Gr.H2O	4352.21 ft	
Gas	0.67 Sp.Gr.AIR	Pump Intake Depth	
Acoustic Velocity	1273.88 f/s	-*- ft	
		Formation Depth	
		4358.00 ft	
		Static BHP	
		730.9 psi (g)	

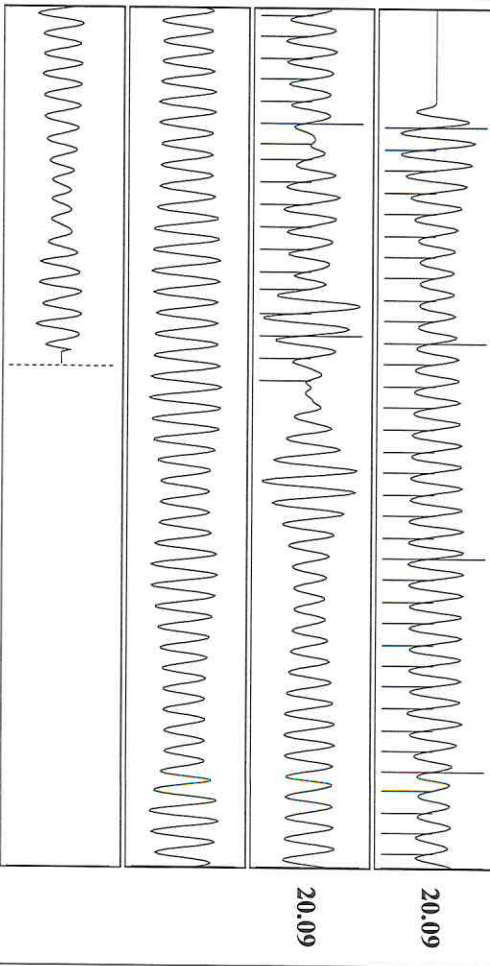


Group: Atlas Well: Deppenbusch 1-26 (acquired on: 06/20/24 16:31:55)



Change in Pressure -0.05 psi
 Change in Time 0.25 min
 PT4212 Range
 0 - ? psi

Group: Atlas Well: Deppenbusch 1-26 (acquired on: 06/20/24 16:31:55)



Acoustic Velocity 1273.88 f/s
 Joints Per Second 20.0927 Jts/sec
 Depth to liquid level 4352.21 ft
 Automatic Collar Count Yes

Joints counted 52
 Joints to liquid level 137.294
 Filter Width 18.1613
 Time to 1st Collar 0.276

Conservation Division
District Office No. 2
3450 N. Rock Road
Building 600, Suite 601
Wichita, KS 67226



Phone: 316-337-7400
<http://kcc.ks.gov/>

Andrew J. French, Chairperson
Dwight D. Keen, Commissioner
Annie Kuether, Commissioner

Laura Kelly, Governor

07/03/2024

Saumyadeep Halder
Atlas Operating LLC
1900 SAINT JAMES PLACE
HOUSTON, TX 77056-4133

Re: Temporary Abandonment
API 15-095-21983-00-00
DEPENBUSCH 1-26
SE/4 Sec.26-30S-09W
Kingman County, Kansas

Dear Saumyadeep Halder:

"Your temporary abandonment (TA) application for the well listed above has been approved. In accordance with K.A.R. 82-3-111 the TA status of this well will expire 07/03/2025.

- * If you return this well to service or plug it, please notify the District Office.
- * If you sell this well you are required to file a Transfer of Operator form, T-1.
- * If the well will remain temporarily abandoned, you must submit a new TA application, CP-111, before 07/03/2025.

You may contact me at the number above if you have questions.

Very truly yours,

Neil Lake, ECRS"