

KANSAS CORPORATION COMMISSION
OIL & GAS CONSERVATION DIVISION

TEMPORARY ABANDONMENT WELL APPLICATION

OPERATOR: License#
Name:
Address 1:
Address 2:
City: State: Zip:
Contact Person:
Phone:
Contact Person Email:
Field Contact Person:
Field Contact Person Phone:

API No. 15-
Spot Description:
Sec. Twp. S. R.
GPS Location: Lat, Long
Datum: NAD27, NAD83, WGS84
County: Elevation:
Lease Name: Well #:
Well Type: Oil, Gas, OG, WSW, Other
SWD Permit #: ENHR Permit #:
Gas Storage Permit #:
Spud Date: Date Shut-In:

Table with 7 columns: Conductor, Surface, Production, Intermediate, Liner, Tubing. Rows include Size, Setting Depth, Amount of Cement, Top of Cement, Bottom of Cement.

Casing Fluid Level from Surface: How Determined? Date:
Casing Squeeze(s): to w / sacks of cement, to w / sacks of cement. Date:
Do you have a valid Oil & Gas Lease? Yes No
Depth and Type: Junk in Hole at Tools in Hole at Casing Leaks: Yes No Depth of casing leak(s):
Type Completion: ALT. I ALT. II Depth of: DV Tool: w / sacks of cement Port Collar: w / sack of cement
Packer Type: Size: Inch Set at: Feet
Total Depth: Plug Back Depth: Plug Back Method:

Geological Data:

Table with 4 columns: Formation Name, Formation Top, Formation Base, Completion Information. Rows 1 and 2.

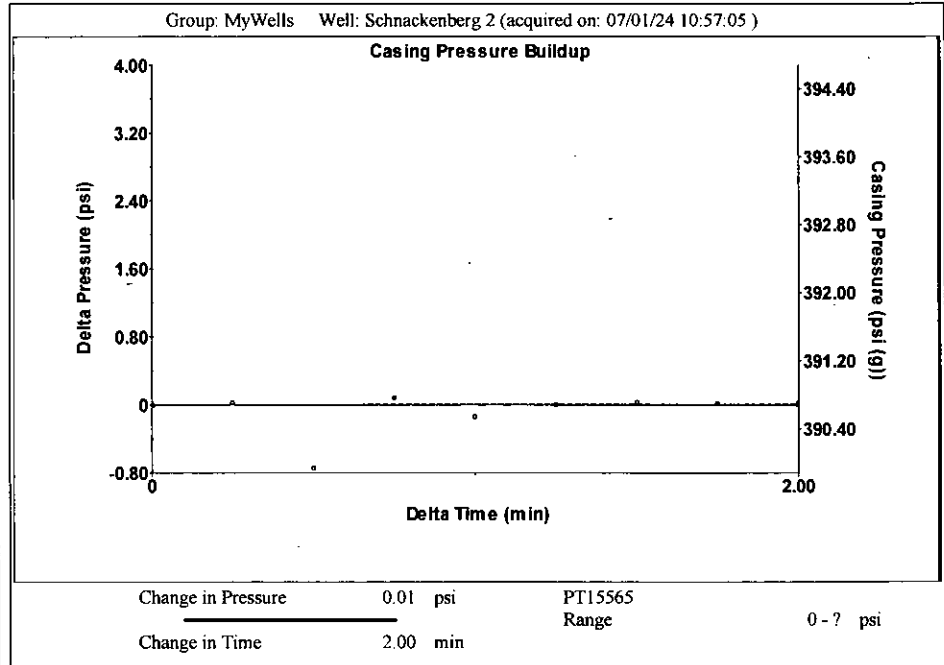
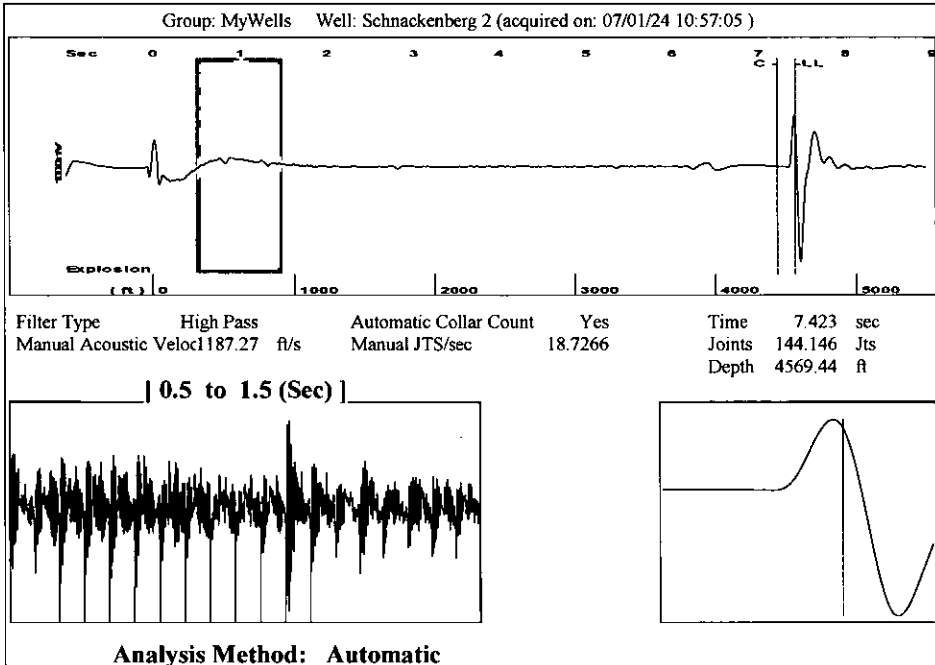
UNDER PENALTY OF PERJURY I HEREBY ATTEST THAT THE INFORMATION CONTAINED HEREIN IS TRUE AND CORRECT TO THE BEST OF MY KNOWLEDGE

Submitted Electronically

Do NOT Write in This Space - KCC USE ONLY
Date Tested: Results: Date Plugged: Date Repaired: Date Put Back in Service:
Review Completed by: Comments:
TA Approved: Yes Denied Date:

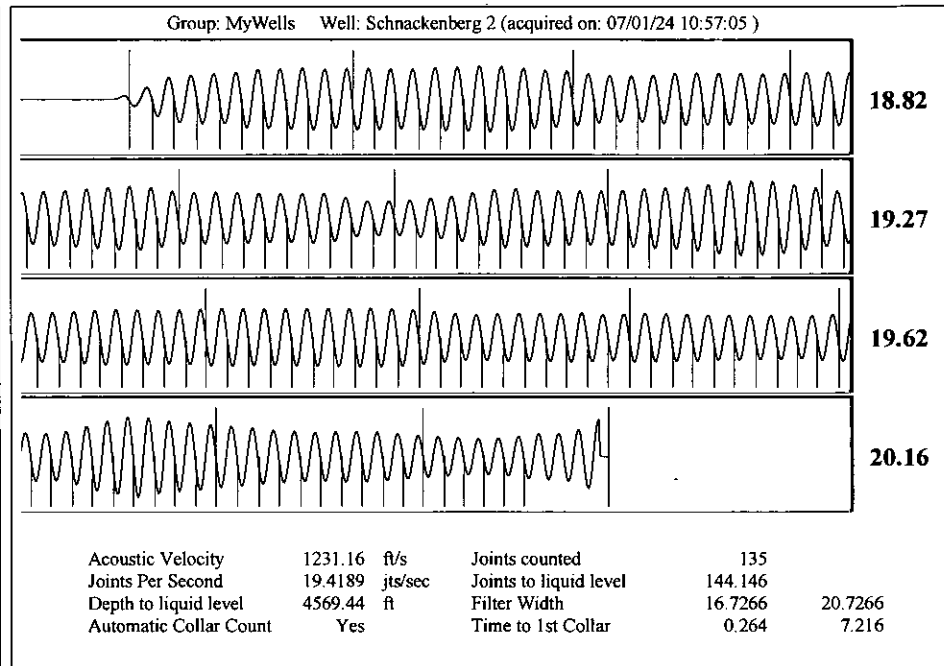
Mail to the Appropriate KCC Conservation Office:

Table with 2 columns: Office Address, Phone. Rows for KCC District Office #1, #2, #3, #4.



Group: MyWells Well: Schnackenberg 2 (acquired on: 07/01/24 10:57:05)

Production Current	Potential	Casing Pressure	Producing
Oil - * -	- * - BBL/D	390.7 psi (g)	
Water - * -	- * - BBL/D	Casing Pressure Buildup	Annular Gas Flow
Gas - * -	- * - Mscf/D	0.0 psi	- * - Mscf/D
		2.00 min	% Liquid
		Gas/Liquid Interface Pressure	100 %
		- * - psi (g)	
IPR Method Vogel		Liquid Level Depth	Pump Intake
PBHP/SBHP - * -		4569.44 ft	- * - psi (g)
Production Efficiency 0.0		Pump Intake Depth	Producing BHP
		4750.00 ft	- * - psi (g)
Oil 40 deg API		Formation Depth	Static BHP
Water 1.05 Sp.Gr.H2O		4673.00 ft	- * - psi (g)
Gas 0.73 Sp.Gr.AIR			
Acoustic Velocity 1231.16 ft/s			
Formation Submergence			
Total Gaseous Liquid Column HT (TVD)	- * - ft		
Equivalent Gas Free Liquid HT (TVD)	- * - ft		
Schnackenberg 2			





Conservation Division  
District Office No. 2  
3450 N. Rock Road  
Building 600, Suite 601  
Wichita, KS 67226



Phone: 316-337-7400  
<http://kcc.ks.gov/>

Andrew J. French, Chairperson  
Dwight D. Keen, Commissioner  
Annie Kuether, Commissioner

Laura Kelly, Governor

07/03/2024

Anthony Farrar  
Indian Oil Co., Inc.  
308 S. Main St.  
PO BOX 209  
MEDICINE LODGE, KS 67104-0209

Re: Temporary Abandonment  
API 15-077-21996-00-00  
SCHNACKENBERG 'A' #2-11  
NW/4 Sec.11-34S-08W  
Harper County, Kansas

Dear Anthony Farrar:

Your application for Temporary Abandonment (TA) for the above-listed well is denied for the following reasons(s):

**Incorrect Shut-in Date**

Pursuant to K.A.R. 82-3-111, the well must be plugged, or returned to service, or obtain temporary abandonment status by 08/02/2024.

**This deadline does NOT override any compliance deadline given to you in any Commission Order.**

You may contact me if you have any questions.

Sincerely,  
Neil Lake, ECRS  
KCC DISTRICT 2