

KANSAS CORPORATION COMMISSION
OIL & GAS CONSERVATION DIVISION

Form must be Typed
Form must be signed

TEMPORARY ABANDONMENT WELL APPLICATION

All blanks must be complete

OPERATOR: License#
Name:
Address 1:
Address 2:
City: State: Zip:
Contact Person:
Phone:
Contact Person Email:
Field Contact Person:
Field Contact Person Phone:

API No. 15-
Spot Description:
Sec. Twp. S. R.
GPS Location: Lat: Long:
Datum: NAD27 NAD83 WGS84
County: Elevation:
Lease Name: Well #:
Well Type: Oil Gas OG WSW Other:
SWD Permit #: ENHR Permit #:
Gas Storage Permit #:
Spud Date: Date Shut-In:

Table with 7 columns: Conductor, Surface, Production, Intermediate, Liner, Tubing. Rows include Size, Setting Depth, Amount of Cement, Top of Cement, Bottom of Cement.

Casing Fluid Level from Surface: How Determined? Date:
Casing Squeeze(s): to w / sacks of cement, to w / sacks of cement. Date:
Do you have a valid Oil & Gas Lease? Yes No
Depth and Type: Junk in Hole at Tools in Hole at Casing Leaks: Yes No Depth of casing leak(s):
Type Completion: ALT. I ALT. II Depth of: DV Tool: w / sacks of cement Port Collar: w / sack of cement
Packer Type: Size: Inch Set at: Feet
Total Depth: Plug Back Depth: Plug Back Method:

Geological Data:

Table with 4 columns: Formation Name, Formation Top, Formation Base, Completion Information. Rows 1 and 2.

UNDER PENALTY OF PERJURY I HEREBY ATTEST THAT THE INFORMATION CONTAINED HEREIN IS TRUE AND CORRECT TO THE BEST OF MY KNOWLEDGE

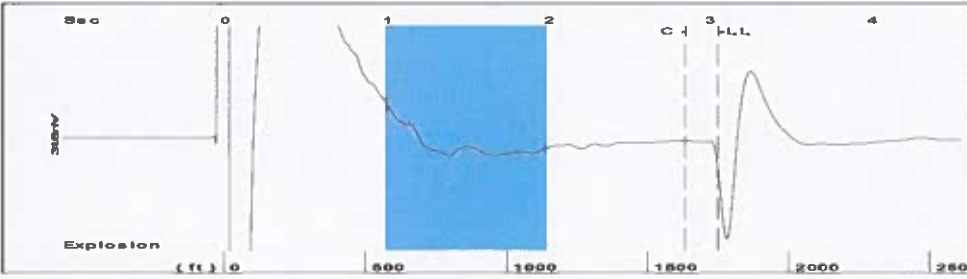
Submitted Electronically

Form with fields: Do NOT Write in This Space - KCC USE ONLY, Date Tested, Results, Date Plugged, Date Repaired, Date Put Back in Service, Review Completed by, Comments, TA Approved: Yes Denied, Date.

Mail to the Appropriate KCC Conservation Office:

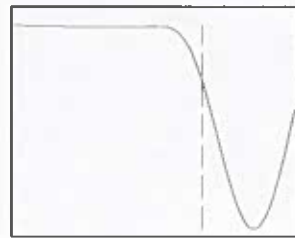
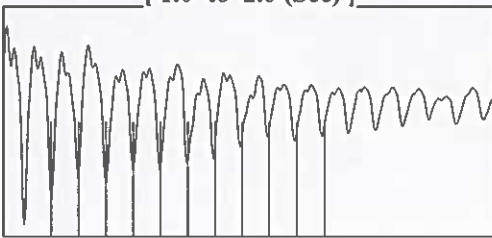
Table with 2 columns: Office Address, Phone. Rows for KCC District Office #1, #2, #3, #4.

Group: TA'D WELLS Well: LAUTRETT A-4 (acquired on: 06/14/24 14:23:05)



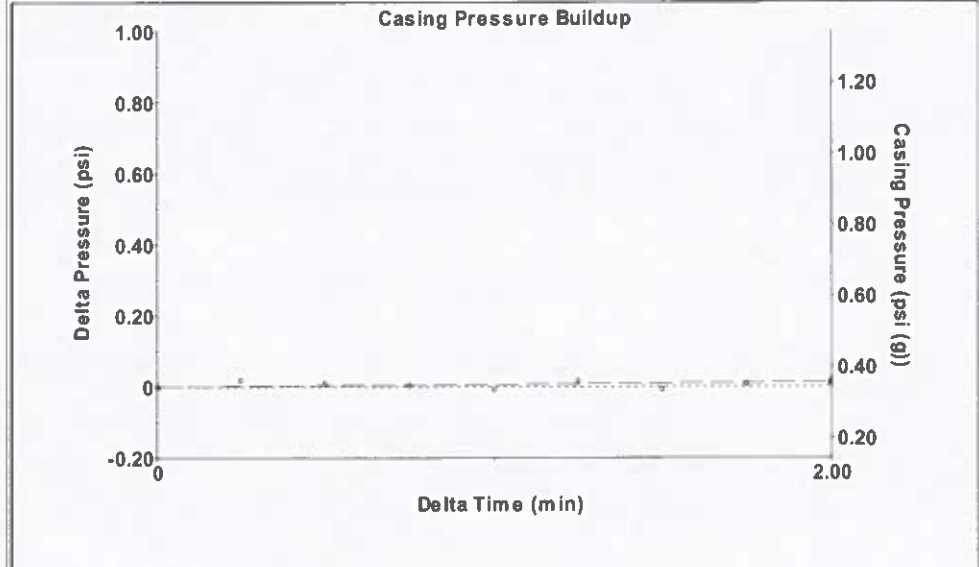
Filter Type High Pass Automatic Collar Count Yes Time 3.053 sec
 Manual Acoustic Velo 1140.29 ft/s Manual JTS/sec 17.9856 Joints 55.1888 Jts
 Depth 1749.49 ft

[1.0 to 2.0 (Sec)]



Analysis Method: Automatic

Group: TA'D WELLS Well: LAUTRETT A-4 (acquired on: 06/14/24 14:23:05)



Change in Pressure 0.01 psi PT10411
 Range 0 - ? psi
 Change in Time 2.00 min

Group: TA'D WELLS Well: LAUTRETT A-4 (acquired on: 06/14/24 14:23:05)

Production Current Potential
 Oil - * - * - BBL/D
 Water - * - * - BBL/D
 Gas - * - * - Mscf/D

IPR Method Vogel
 PBHP/SBHP - * -
 Production Efficiency 0.0

Oil 40 deg API
 Water 1.05 Sp.Gr.H2O
 Gas 0.83 Sp.Gr.AIR

Acoustic Velocity 1146.08 ft/s

Casing Pressure 0.3 psi (g)
 Casing Pressure Buildup 0.0 psi
 2.00 min
 Gas/Liquid Interface Pressure 1.1 psi (g)

Liquid Level Depth 1749.49 ft
 Pump Intake Depth 5860.00 ft
 Formation Depth 5950.00 ft



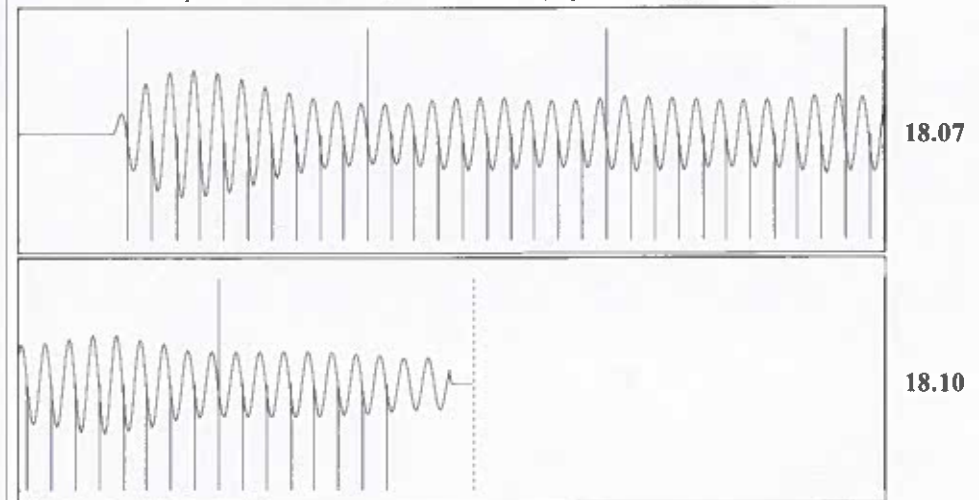
Producing
 Annular Gas Flow 0 Mscf/D
 % Liquid 100 %

Pump Intake 1327.7 psi (g)
 Producing BHP 1368.6 psi (g)
 Static BHP - * - psi (g)

Formation Submergence
 Total Gaseous Liquid Column HT (TVD) 4111 ft
 Equivalent Gas Free Liquid HT (TVD) 4111 ft

Acoustic Test

Group: TA'D WELLS Well: LAUTRETT A-4 (acquired on: 06/14/24 14:23:05)



Acoustic Velocity 1146.08 ft/s Joints counted 47
 Joints Per Second 18.0769 jts/sec Joints to liquid level 55.1888
 Depth to liquid level 1749.49 ft Filter Width 15.9856 19.9856
 Automatic Collar Count Yes Time to 1st Collar 0.252 2.852

Conservation Division
District Office No. 1
210 E. Frontview, Suite A
Dodge City, KS 67801



Phone: 620-682-7933
<http://kcc.ks.gov/>

Andrew J. French, Chairperson
Dwight D. Keen, Commissioner
Annie Kuether, Commissioner

Laura Kelly, Governor

07/08/2024

Katherine McClurkan
Merit Energy Company, LLC
13727 Noel Road, Suite 1200
Dallas, TX 75240-7362

Re: Temporary Abandonment
API 15-129-21746-00-00
Lautaret A 4
SW/4 Sec.17-32S-39W
Morton County, Kansas

Dear Katherine McClurkan:

"Your temporary abandonment (TA) application for the well listed above has been approved. In accordance with K.A.R. 82-3-111 the TA status of this well will expire 07/08/2025.

- * If you return this well to service or plug it, please notify the District Office.
- * If you sell this well you are required to file a Transfer of Operator form, T-1.
- * If the well will remain temporarily abandoned, you must submit a new TA application, CP-111, before 07/08/2025.

You may contact me at the number above if you have questions.

Very truly yours,

Michael Maier"