

KANSAS CORPORATION COMMISSION
OIL & GAS CONSERVATION DIVISION

TEMPORARY ABANDONMENT WELL APPLICATION

OPERATOR: License#
Name:
Address 1:
Address 2:
City: State: Zip:
Contact Person:
Phone:
Contact Person Email:
Field Contact Person:
Field Contact Person Phone:

API No. 15-
Spot Description:
Sec. Twp. S. R.
GPS Location: Lat: Long:
Datum: NAD27 NAD83 WGS84
County: Elevation:
Lease Name: Well #:
Well Type: Oil Gas OG WSW Other:
SWD Permit #: ENHR Permit #:
Gas Storage Permit #:
Spud Date: Date Shut-In:

Table with 7 columns: Conductor, Surface, Production, Intermediate, Liner, Tubing. Rows include Size, Setting Depth, Amount of Cement, Top of Cement, Bottom of Cement.

Casing Fluid Level from Surface: How Determined? Date:
Casing Squeeze(s): to w / sacks of cement, to w / sacks of cement. Date:
Do you have a valid Oil & Gas Lease? Yes No
Depth and Type: Junk in Hole at Tools in Hole at Casing Leaks: Yes No Depth of casing leak(s):
Type Completion: ALT. I ALT. II Depth of: DV Tool: w / sacks of cement Port Collar: w / sack of cement
Packer Type: Size: Inch Set at: Feet
Total Depth: Plug Back Depth: Plug Back Method:

Geological Date:

Table with 4 columns: Formation Name, Formation Top, Formation Base, Completion Information. Rows 1 and 2.

UNDER PENALTY OF PERJURY I HEREBY ATTEST THAT THE INFORMATION CONTAINED HEREIN IS TRUE AND CORRECT TO THE BEST OF MY KNOWLEDGE

Submitted Electronically

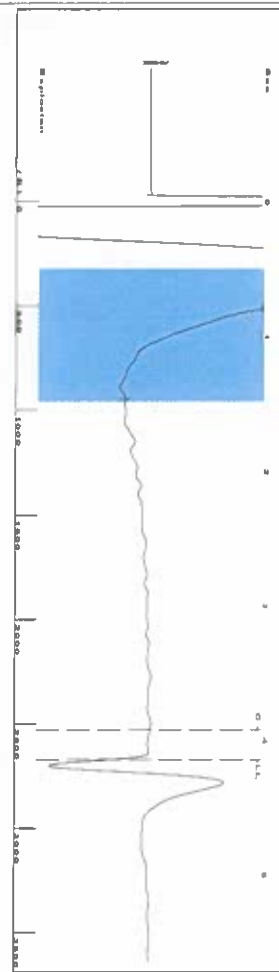
Do NOT Write in This Space - KCC USE ONLY
Date Tested: Results: Date Plugged: Date Repaired: Date Put Back in Service:
Review Completed by: Comments:
TA Approved: Yes Denied Date:

Mail to the Appropriate KCC Conservation Office:

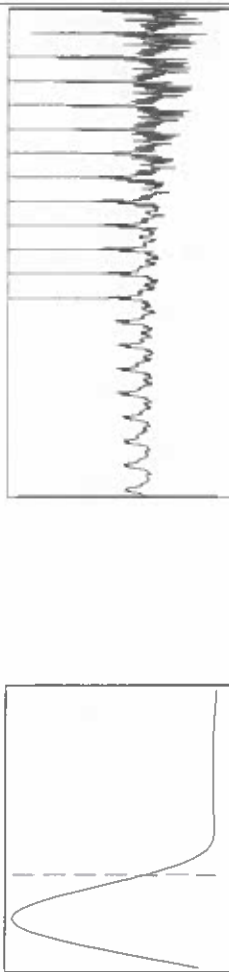
Table with 2 columns: Office Address, Phone. Rows for District Office #1, #2, #3, #4.



Group: SUBLETTE Well: Davatz D-4 (acquired on: 07/04/24 13:56:03)



Filter Type High Pass Automatic Collar Count Yes
 Manual Acoustic Vel 1278.23 ft/s Manual JTS/sec 20.1613
 Time 4.145 sec
 Joints 84.3051 Jts
 Depth 2672.47 ft

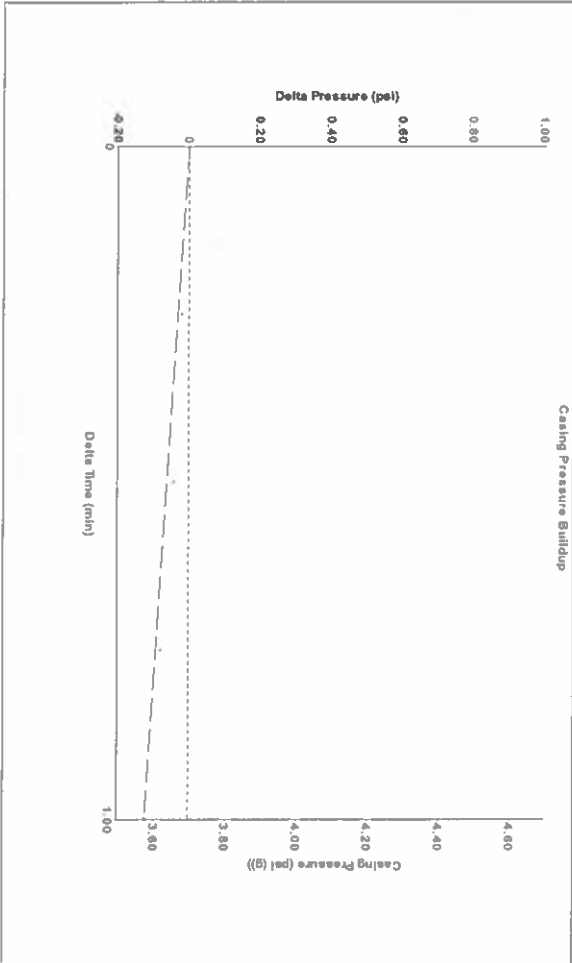


Analysis Method: Automatic

Group: SUBLETTE Well: Davatz D-4 (acquired on: 07/04/24 13:56:03)

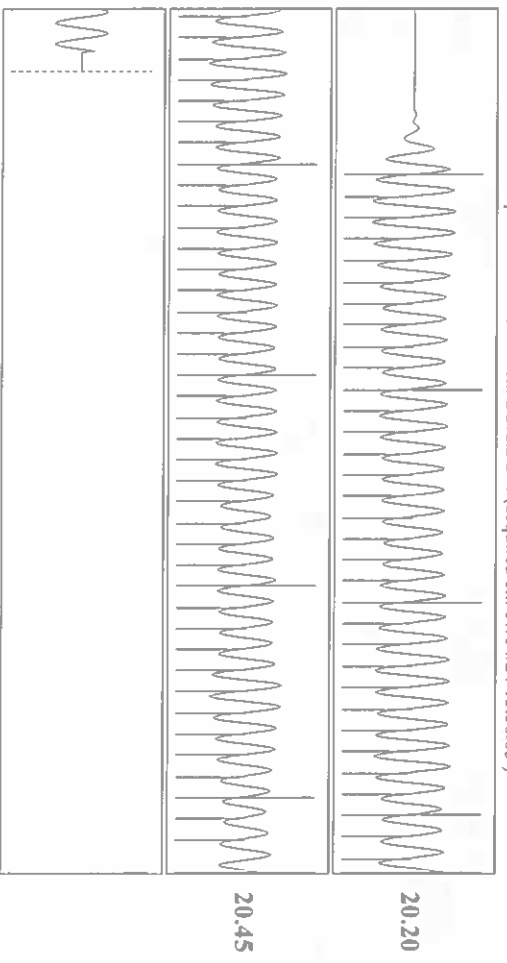
Production Current	Potential	Casing Pressure	Producing
Oil -*- Water -*- Gas -*-	BBL/D BBL/D Mscf/D	3.7 psi (g) Casing Pressure Buildup -0.122 psi 1.00 min	Annular Gas Flow 0 Mscf/D % Liquid 100 %
IPR Method PBHP/SBHP Production Efficiency	Vogel -*- 0.0	Gas/Liquid Interface Pressure 4.9 psi (g)	
Oil 40 deg API Water 1.05 Sp.Gr:H2O Gas 0.72 Sp.Gr:AIR	Liquid Level Depth 2672.47 ft Pump Intake Depth 2929.00 ft Formation Depth 2887.00 ft		
Acoustic Velocity	1289.49 ft/s		
Formation Submergence Total Gaseous Liquid Column HT (TVD) Equivalent Gas Free Liquid HT (TVD)	257 ft 257 ft		
7/4/24			

Group: SUBLETTE Well: Davatz D-4 (acquired on: 07/04/24 13:56:03)



Change in Pressure -0.12 psi
 Change in Time 1.00 min
 PT 14679
 Range 0 - 2 psi

Group: SUBLETTE Well: Davatz D-4 (acquired on: 07/04/24 13:56:03)



Acoustic Velocity	1289.49 ft/s	Joints counted	72
Joints Per Second	20.339	Joints to liquid level	84.3051
Depth to liquid level	2672.47 ft	Filter Width	18.1613
Automatic Collar Count	Yes	Time to 1st Collar	0.384
			22.1613
			3.924

07/10/2024

Katherine McClurkan
Merit Energy Company, LLC
13727 Noel Road, Suite 1200
Dallas, TX 75240-7362

Re: Temporary Abandonment
API 15-081-21090-00-00
Davatz D 4
SW/4 Sec.20-27S-34W
Haskell County, Kansas

Dear Katherine McClurkan:

"Your temporary abandonment (TA) application for the well listed above has been approved. In accordance with K.A.R. 82-3-111 the TA status of this well will expire 07/10/2025.

- * If you return this well to service or plug it, please notify the District Office.
- * If you sell this well you are required to file a Transfer of Operator form, T-1.
- * If the well will remain temporarily abandoned, you must submit a new TA application, CP-111, before 07/10/2025.

You may contact me at the number above if you have questions.

Very truly yours,

Michael Maier"