

KANSAS CORPORATION COMMISSION
OIL & GAS CONSERVATION DIVISION

TEMPORARY ABANDONMENT WELL APPLICATION

OPERATOR: License# _____
 Name: _____
 Address 1: _____
 Address 2: _____
 City: _____ State: _____ Zip: _____ + _____
 Contact Person: _____
 Phone: (_____) _____
 Contact Person Email: _____
 Field Contact Person: _____
 Field Contact Person Phone: (_____) _____

API No. 15- _____
 Spot Description: _____
 _____ - _____ - _____ - _____ Sec. _____ Twp. _____ S. R. _____ E W
 _____ feet from N / S Line of Section
 _____ feet from E / W Line of Section
 GPS Location: Lat: _____, Long: _____
(e.g. xx.xxxxx) (e.g. -xxx.xxxxx)
 Datum: NAD27 NAD83 WGS84
 County: _____ Elevation: _____ GL KB
 Lease Name: _____ Well #: _____
 Well Type: (check one) Oil Gas OG WSW Other: _____
 SWD Permit #: _____ ENHR Permit #: _____
 Gas Storage Permit #: _____
 Spud Date: _____ Date Shut-In: _____

	Conductor	Surface	Production	Intermediate	Liner	Tubing
Size						
Setting Depth						
Amount of Cement						
Top of Cement						
Bottom of Cement						

Casing Fluid Level from Surface: _____ How Determined? _____ Date: _____
 Casing Squeeze(s): _____ to _____ w / _____ sacks of cement, _____ to _____ w / _____ sacks of cement. Date: _____
(top) (bottom) (top) (bottom)
 Do you have a valid Oil & Gas Lease? Yes No
 Depth and Type: Junk in Hole at _____ Tools in Hole at _____ Casing Leaks: Yes No Depth of casing leak(s): _____
(depth) (depth)
 Type Completion: ALT. I ALT. II Depth of: DV Tool: _____ w / _____ sacks of cement Port Collar: _____ w / _____ sack of cement
(depth) (depth)
 Packer Type: _____ Size: _____ Inch Set at: _____ Feet
 Total Depth: _____ Plug Back Depth: _____ Plug Back Method: _____

Geological Data:

Formation Name	Formation Top	Formation Base	Completion Information
1. _____	At: _____	to _____ Feet	Perforation Interval _____ to _____ Feet or Open Hole Interval _____ to _____ Feet
2. _____	At: _____	to _____ Feet	Perforation Interval _____ to _____ Feet or Open Hole Interval _____ to _____ Feet

UNDER PENALTY OF PERJURY I HEREBY ATTEST THAT THE INFORMATION CONTAINED HEREIN IS TRUE AND CORRECT TO THE BEST OF MY KNOWLEDGE

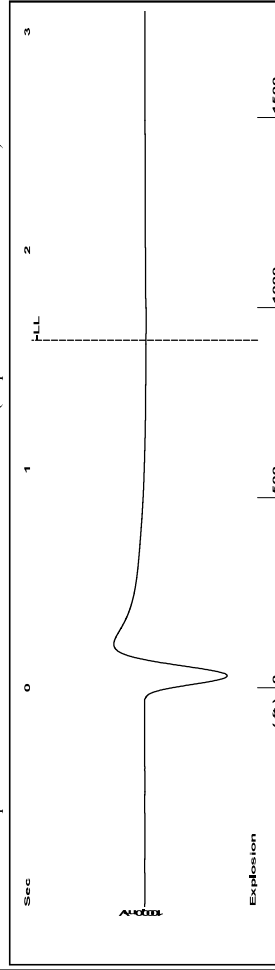
Submitted Electronically

Do NOT Write in This Space - KCC USE ONLY	Date Tested: _____	Results: _____	Date Plugged: _____	Date Repaired: _____	Date Put Back in Service: _____
	Review Completed by: _____ Comments: _____				
TA Approved: <input type="checkbox"/> Yes <input type="checkbox"/> Denied Date: _____					

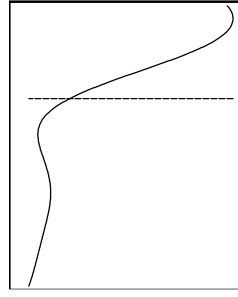
Mail to the Appropriate KCC Conservation Office:

	KCC District Office #1 - 210 E. Frontview, Suite A, Dodge City, KS 67801	Phone 620.682.7933
	KCC District Office #2 - 3450 N. Rock Road, Building 600, Suite 601, Wichita, KS 67226	Phone 316.337.7400
	KCC District Office #3 - 137 E. 21st St., Chanute, KS 66720	Phone 620.902.6450
	KCC District Office #4 - 2301 E. 13th Street, Hays, KS 67601-2651	Phone 785.261.6250

Group: BURK ROYALTY Well: HAMANT 1 SWD (acquired on: 06/06/24 13:55:39)



Time 1.59 sec
Joints 28.8407 Jts
Depth 914.25 ft



Liquid level calculated with
user supplied Acoustic Velocity

Acoustic Velocity 1150 ft/s

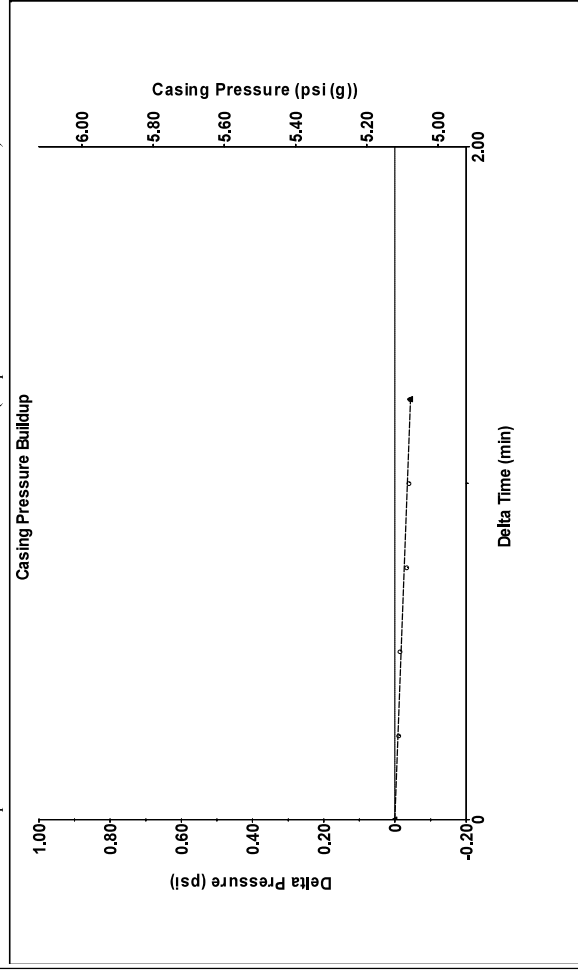
Analysis Method: Acoustic Velocity

Group: BURK ROYALTY Well: HAMANT 1 SWD (acquired on: 06/06/24 13:55:39)

Production	Potential	Casing Pressure	Static
Oil - * -	- * - BBL/D	5.1 psi (g)	Oil Column Height
Water - * -	- * - BBL/D	Casing Pressure Buildup	MD 0 ft
Gas - * -	- * - Mscf/D	-0.044 psi	Water Column Height
IPR Method	Vogel	1.25 min	MD - * - ft
PBHP/SBHP	- * -	Gas/Liquid Interface Pressure	Static BHP
Production Efficiency	0.0	- * - psi (g)	- * - psi (g)
Oil 40 deg API	Liquid Level Depth		
Water 1.05 Sp.Gr.H2O	914.25 ft		
Gas 0.85 Sp.Gr.AIR	Pump Intake Depth		
Acoustic Velocity	- * - ft		
1150 ft/s	Formation Depth		
	3300.00 ft		

Acoustic Test #2

Group: BURK ROYALTY Well: HAMANT 1 SWD (acquired on: 06/06/24 13:55:39)



Change in Pressure -0.04 psi
Change in Time 1.25 min
PT14165 Range

0 - ? psi

Group: BURK ROYALTY Well: HAMANT 1 SWD (acquired on: 06/06/24 13:55:39)

Entered Acoustic Velocity for Liquid Level depth determination

Conservation Division
District Office No. 2
3450 N. Rock Road
Building 600, Suite 601
Wichita, KS 67226



Phone: 316-337-7400
<http://kcc.ks.gov/>

Andrew J. French, Chairperson
Dwight D. Keen, Commissioner
Annie Kuether, Commissioner

Laura Kelly, Governor

07/12/2024

Cheyenne Snapp
Burk Royalty Co, Ltd
4245 KEMP BLVD STE 600
WICHITA FALLS, TX 76308-2829

Re: Temporary Abandonment
API 15-173-20993-00-00
HAMANT SWD
NW/4 Sec.14-26S-02E
Sedgwick County, Kansas

Dear Cheyenne Snapp:

"Your temporary abandonment (TA) application for the well listed above has been approved. In accordance with K.A.R. 82-3-111 the TA status of this well will expire 07/12/2025.

- * If you return this well to service or plug it, please notify the District Office.
- * If you sell this well you are required to file a Transfer of Operator form, T-1.
- * If the well will remain temporarily abandoned, you must submit a new TA application, CP-111, before 07/12/2025.

You may contact me at the number above if you have questions.

Very truly yours,

Dan Fox"