

KANSAS CORPORATION COMMISSION
OIL & GAS CONSERVATION DIVISION

TEMPORARY ABANDONMENT WELL APPLICATION

OPERATOR: License#
Name:
Address 1:
Address 2:
City: State: Zip:
Contact Person:
Phone:
Contact Person Email:
Field Contact Person:
Field Contact Person Phone:

API No. 15-
Spot Description:
Sec. Twp. S. R.
feet from N / S Line of Section
feet from E / W Line of Section
GPS Location: Lat: , Long:
Datum: NAD27 NAD83 WGS84
County: Elevation: GL KB
Lease Name: Well #:
Well Type: Oil Gas OG WSW Other:
SWD Permit #: ENHR Permit #:
Gas Storage Permit #:
Spud Date: Date Shut-In:

Table with 7 columns: Conductor, Surface, Production, Intermediate, Liner, Tubing. Rows include Size, Setting Depth, Amount of Cement, Top of Cement, Bottom of Cement.

Casing Fluid Level from Surface: How Determined? Date:
Casing Squeeze(s): to w / sacks of cement, to w / sacks of cement. Date:
Do you have a valid Oil & Gas Lease? Yes No
Depth and Type: Junk in Hole at Tools in Hole at Casing Leaks: Yes No Depth of casing leak(s):
Type Completion: ALT. I ALT. II Depth of: DV Tool: w / sacks of cement Port Collar: w / sack of cement
Packer Type: Size: Inch Set at: Feet
Total Depth: Plug Back Depth: Plug Back Method:

Geological Data:

Table with 4 columns: Formation Name, Formation Top, Formation Base, Completion Information. Rows 1 and 2.

UNDER PENALTY OF PERJURY I HEREBY ATTEST THAT THE INFORMATION CONTAINED HEREIN IS TRUE AND CORRECT TO THE BEST OF MY KNOWLEDGE

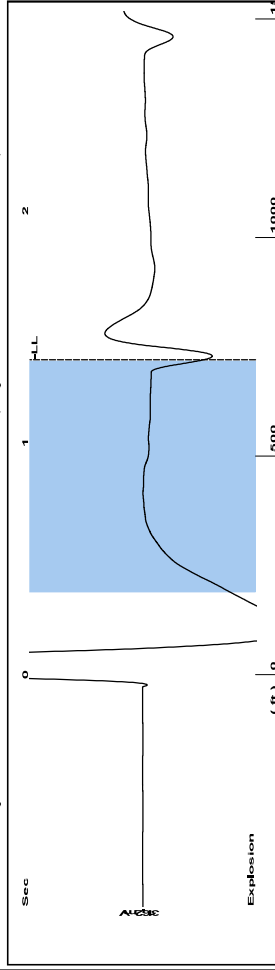
Submitted Electronically

Do NOT Write in This Space - KCC USE ONLY
Date Tested: Results: Date Plugged: Date Repaired: Date Put Back in Service:
Review Completed by: Comments:
TA Approved: Yes Denied Date:

Mail to the Appropriate KCC Conservation Office:

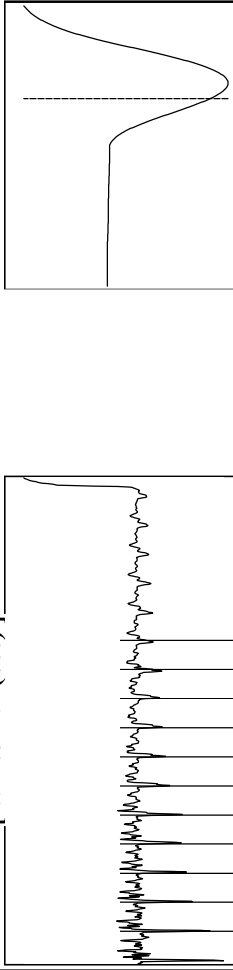
Table with 3 columns: District Office #, Address, Phone. Rows 1-4.

Group: BURK ROYALTY Well: GOODSON 23X (acquired on: 06/06/24 12:53:21)



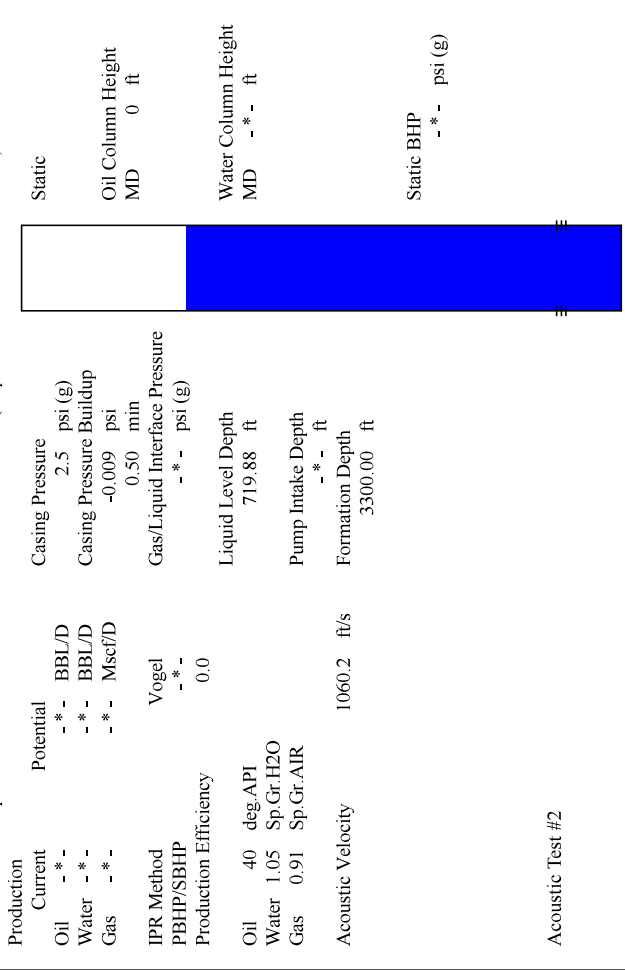
Filter Type High Pass Automatic Collar Count Yes Time 1.358 sec
Manual Acoustic Velocity 1060.2 ft/s Manual JTS/sec 16.7224 Joints 22.709 Jts
Depth 719.88 ft

| 0.4 to 1.4 (Sec) |



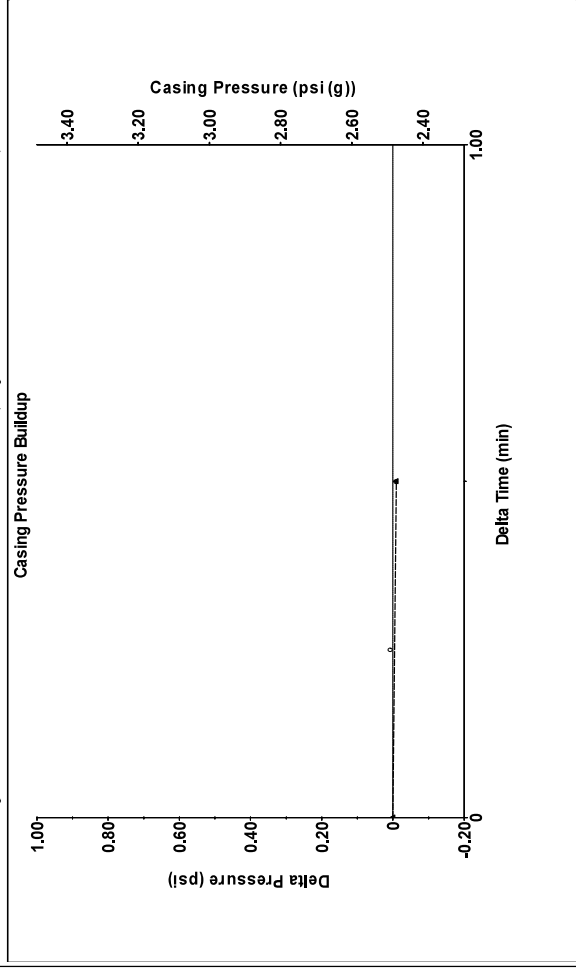
Analysis Method: Automatic

Group: BURK ROYALTY Well: GOODSON 23X (acquired on: 06/06/24 12:53:21)



Acoustic Test #2

Group: BURK ROYALTY Well: GOODSON 23X (acquired on: 06/06/24 12:53:21)



Change in Pressure -0.01 psi PT14165
Change in Time 0.50 min Range

Group: BURK ROYALTY Well: GOODSON 23X (acquired on: 06/06/24 12:53:21)

No Collar Count Data Available

Conservation Division
District Office No. 2
3450 N. Rock Road
Building 600, Suite 601
Wichita, KS 67226



Phone: 316-337-7400
<http://kcc.ks.gov/>

Andrew J. French, Chairperson
Dwight D. Keen, Commissioner
Annie Kuether, Commissioner

Laura Kelly, Governor

07/12/2024

Cheyenne Snapp
Burk Royalty Co, Ltd
4245 KEMP BLVD STE 600
WICHITA FALLS, TX 76308-2829

Re: Temporary Abandonment
API 15-173-21026-00-01
GOODSON 23X
NW/4 Sec.14-26S-02E
Sedgwick County, Kansas

Dear Cheyenne Snapp:

"Your temporary abandonment (TA) application for the well listed above has been approved. In accordance with K.A.R. 82-3-111 the TA status of this well will expire 07/12/2025.

- * If you return this well to service or plug it, please notify the District Office.
- * If you sell this well you are required to file a Transfer of Operator form, T-1.
- * If the well will remain temporarily abandoned, you must submit a new TA application, CP-111, before 07/12/2025.

You may contact me at the number above if you have questions.

Very truly yours,

Dan Fox"