

KANSAS CORPORATION COMMISSION
OIL & GAS CONSERVATION DIVISION

Form must be Typed
Form must be signed

TEMPORARY ABANDONMENT WELL APPLICATION

All blanks must be complete

OPERATOR: License#
Name:
Address 1:
Address 2:
City: State: Zip:
Contact Person:
Phone:
Contact Person Email:
Field Contact Person:
Field Contact Person Phone:

API No. 15-
Spot Description:
Sec. Twp. S. R.
GPS Location: Lat: Long:
Datum: NAD27 NAD83 WGS84
County: Elevation:
Lease Name: Well #:
Well Type: Oil Gas OG WSW Other:
SWD Permit #: ENHR Permit #:
Gas Storage Permit #:
Spud Date: Date Shut-In:

Table with 7 columns: Conductor, Surface, Production, Intermediate, Liner, Tubing. Rows include Size, Setting Depth, Amount of Cement, Top of Cement, Bottom of Cement.

Casing Fluid Level from Surface: How Determined? Date:
Casing Squeeze(s): to w / sacks of cement, to w / sacks of cement. Date:
Do you have a valid Oil & Gas Lease? Yes No
Depth and Type: Junk in Hole at Tools in Hole at Casing Leaks: Yes No Depth of casing leak(s):
Type Completion: ALT. I ALT. II Depth of: DV Tool: w / sacks of cement Port Collar: w / sack of cement
Packer Type: Size: Inch Set at: Feet
Total Depth: Plug Back Depth: Plug Back Method:

Geological Data:

Table with 4 columns: Formation Name, Formation Top, Formation Base, Completion Information. Rows 1 and 2.

UNDER PENALTY OF PERJURY I HEREBY ATTEST THAT THE INFORMATION CONTAINED HEREIN IS TRUE AND CORRECT TO THE BEST OF MY KNOWLEDGE

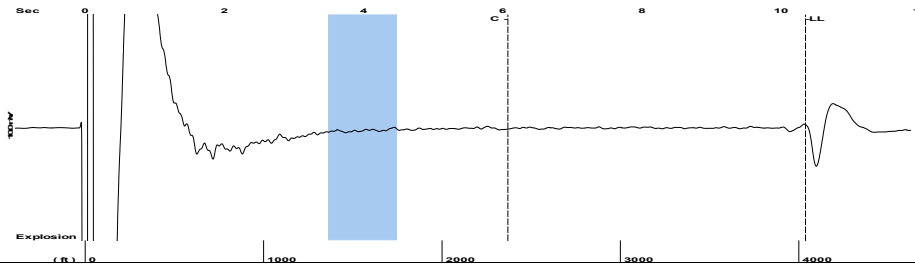
Submitted Electronically

Do NOT Write in This Space - KCC USE ONLY
Date Tested: Results: Date Plugged: Date Repaired: Date Put Back in Service:
Review Completed by: Comments:
TA Approved: Yes Denied Date:

Mail to the Appropriate KCC Conservation Office:

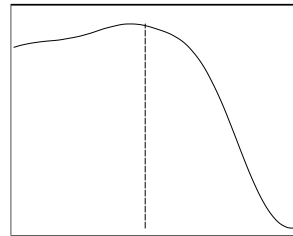
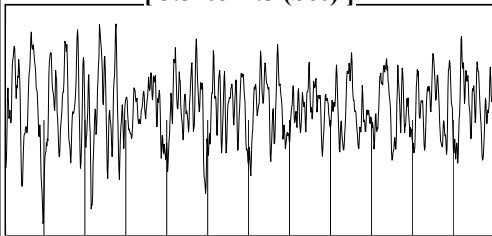
Table with 3 columns: District Office #, Address, Phone. Rows 1-4.

Group: Kansas Well: Parsons #3-27 (acquired on: 07/15/24 14:17:20)



Filter Type High Pass Automatic Collar Count Yes Time 10.353 sec  
 Manual Acoustic Veloc 771.938 ft/s Manual JTS/sec 11.8906 Joints 124.366 Jts  
 Depth 4036.91 ft

[ 3.5 to 4.5 (Sec) ]



Analysis Method: Automatic

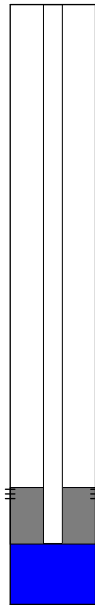
Group: Kansas Well: Parsons #3-27 (acquired on: 07/15/24 14:17:20)



Change in Pressure -0.02 psi PT 18318  
 Range 0 - ? psi  
 Change in Time 0.25 min

Group: Kansas Well: Parsons #3-27 (acquired on: 07/15/24 14:17:20)

|                                |       |              |                               |
|--------------------------------|-------|--------------|-------------------------------|
| Production                     |       | Potential    | Casing Pressure               |
| Current                        | - * - | - * - BBL/D  | -1.4 psi (g)                  |
| Oil                            | - * - | - * - BBL/D  | Casing Pressure Buildup       |
| Water                          | - * - | - * - Mscf/D | 0.25 min                      |
| Gas                            | - * - |              | Gas/Liquid Interface Pressure |
|                                |       |              | 0.9 psi (g)                   |
| IPR Method                     | Vogel |              | Liquid Level Depth            |
| PBHP/SBHP                      | - * - |              | 4036.91 ft                    |
| Production Efficiency          | 0.0   |              | Pump Intake Depth             |
|                                |       |              | 4580.50 ft                    |
| Oil 40 deg.API                 |       |              | Formation Depth               |
| Water 1.05 Sp.Gr.H2O           |       |              | 4106.00 ft                    |
| Gas 1.19 Sp.Gr.AIR             |       |              |                               |
| Acoustic Velocity 779.854 ft/s |       |              |                               |



Producing

Annular Gas Flow 0 Mscf/D

% Liquid 100 %

Pump Intake 186.8 psi (g)

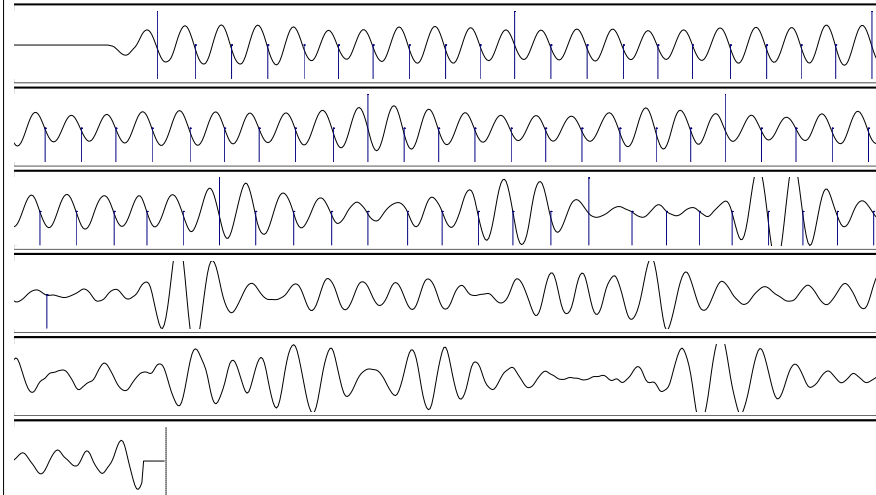
Producing BHP 24.8 psi (g)

Static BHP - \* - psi (g)

Formation Submergence 544 ft  
 Total Gaseous Liquid Column HT (TVD) 544 ft  
 Equivalent Gas Free Liquid HT (TVD) 544 ft

Acoustic Test

Group: Kansas Well: Parsons #3-27 (acquired on: 07/15/24 14:17:20)



|                        |                 |                        |                 |
|------------------------|-----------------|------------------------|-----------------|
| Acoustic Velocity      | 779.854 ft/s    | Joints counted         | 69              |
| Joints Per Second      | 12.0125 jts/sec | Joints to liquid level | 124.366         |
| Depth to liquid level  | 4036.91 ft      | Filter Width           | 9.89061 13.8906 |
| Automatic Collar Count | Yes             | Time to 1st Collar     | 0.332 6.076     |

07/16/2024

Jeff Scarbrough  
Shakespeare Oil Co., Inc.  
202 W MAIN ST  
SALEM, IL 62881-1519

Re: Temporary Abandonment  
API 15-063-22074-00-00  
PARSONS 3-27  
NW/4 Sec.27-13S-31W  
Gove County, Kansas

Dear Jeff Scarbrough:

"Your temporary abandonment (TA) application for the well listed above has been approved. In accordance with K.A.R. 82-3-111 the TA status of this well will expire 07/16/2025.

- \* If you return this well to service or plug it, please notify the District Office.
- \* If you sell this well you are required to file a Transfer of Operator form, T-1.
- \* If the well will remain temporarily abandoned, you must submit a new TA application, CP-111, before 07/16/2025.

You may contact me at the number above if you have questions.

Very truly yours,

RICHARD WILLIAMS"