

KANSAS CORPORATION COMMISSION
OIL & GAS CONSERVATION DIVISION

TEMPORARY ABANDONMENT WELL APPLICATION

OPERATOR: License# \_\_\_\_\_
Name: \_\_\_\_\_
Address 1: \_\_\_\_\_
Address 2: \_\_\_\_\_
City: \_\_\_\_\_ State: \_\_\_\_\_ Zip: \_\_\_\_\_ + \_\_\_\_\_
Contact Person: \_\_\_\_\_
Phone:( \_\_\_\_\_ ) \_\_\_\_\_
Contact Person Email: \_\_\_\_\_
Field Contact Person: \_\_\_\_\_
Field Contact Person Phone: ( \_\_\_\_\_ ) \_\_\_\_\_

API No. 15- \_\_\_\_\_
Spot Description: \_\_\_\_\_
- - - - - Sec. \_\_\_\_\_ Twp. \_\_\_\_\_ S. R. \_\_\_\_\_  E  W
\_\_\_\_\_ feet from  N /  S Line of Section
\_\_\_\_\_ feet from  E /  W Line of Section
GPS Location: Lat: \_\_\_\_\_, Long: \_\_\_\_\_
Datum:  NAD27  NAD83  WGS84
County: \_\_\_\_\_ Elevation: \_\_\_\_\_  GL  KB
Lease Name: \_\_\_\_\_ Well #: \_\_\_\_\_
Well Type: (check one)  Oil  Gas  OG  WSW  Other: \_\_\_\_\_
 SWD Permit #: \_\_\_\_\_  ENHR Permit #: \_\_\_\_\_
 Gas Storage Permit #: \_\_\_\_\_
Spud Date: \_\_\_\_\_ Date Shut-In: \_\_\_\_\_

Table with 7 columns: Conductor, Surface, Production, Intermediate, Liner, Tubing. Rows include Size, Setting Depth, Amount of Cement, Top of Cement, Bottom of Cement.

Casing Fluid Level from Surface: \_\_\_\_\_ How Determined? \_\_\_\_\_ Date: \_\_\_\_\_
Casing Squeeze(s): \_\_\_\_\_ to \_\_\_\_\_ w / \_\_\_\_\_ sacks of cement, \_\_\_\_\_ to \_\_\_\_\_ w / \_\_\_\_\_ sacks of cement. Date: \_\_\_\_\_
Do you have a valid Oil & Gas Lease?  Yes  No
Depth and Type:  Junk in Hole at \_\_\_\_\_  Tools in Hole at \_\_\_\_\_ Casing Leaks:  Yes  No Depth of casing leak(s): \_\_\_\_\_
Type Completion:  ALT. I  ALT. II Depth of:  DV Tool: \_\_\_\_\_ w / \_\_\_\_\_ sacks of cement  Port Collar: \_\_\_\_\_ w / \_\_\_\_\_ sack of cement
Packer Type: \_\_\_\_\_ Size: \_\_\_\_\_ Inch Set at: \_\_\_\_\_ Feet
Total Depth: \_\_\_\_\_ Plug Back Depth: \_\_\_\_\_ Plug Back Method: \_\_\_\_\_

Geological Data:

Table with 4 columns: Formation Name, Formation Top, Formation Base, Completion Information. Rows 1 and 2 for formation data.

UNDER PENALTY OF PERJURY I HEREBY ATTEST THAT THE INFORMATION CONTAINED HEREIN IS TRUE AND CORRECT TO THE BEST OF MY KNOWLEDGE

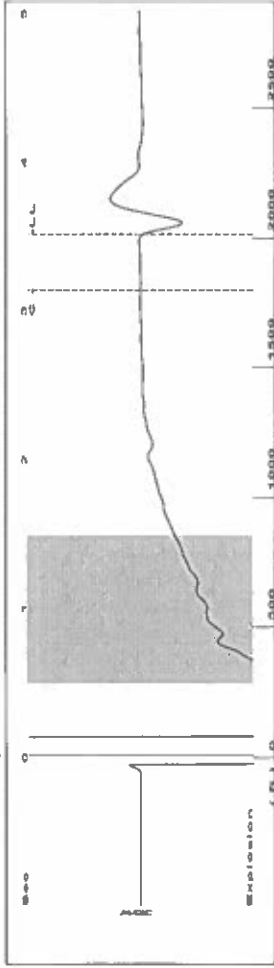
Submitted Electronically

Do NOT Write in This Space - KCC USE ONLY
Date Tested: \_\_\_\_\_ Results: \_\_\_\_\_ Date Plugged: \_\_\_\_\_ Date Repaired: \_\_\_\_\_ Date Put Back in Service: \_\_\_\_\_
Review Completed by: \_\_\_\_\_ Comments: \_\_\_\_\_
TA Approved:  Yes  Denied Date: \_\_\_\_\_

Mail to the Appropriate KCC Conservation Office:

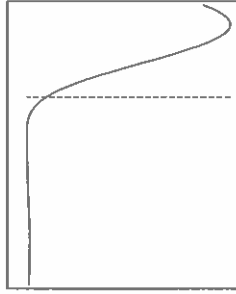
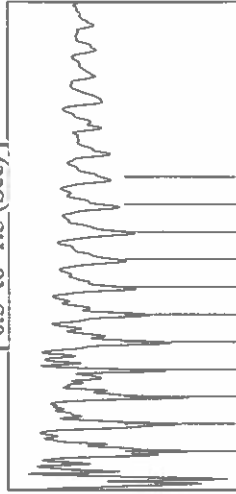
Table with 3 columns: District Office, Address, Phone. Rows for District Office #1, #2, #3, and #4.

Group: Route 2 Well: Henselmann A3 (acquired on: 07/10/24 13:45:32 )



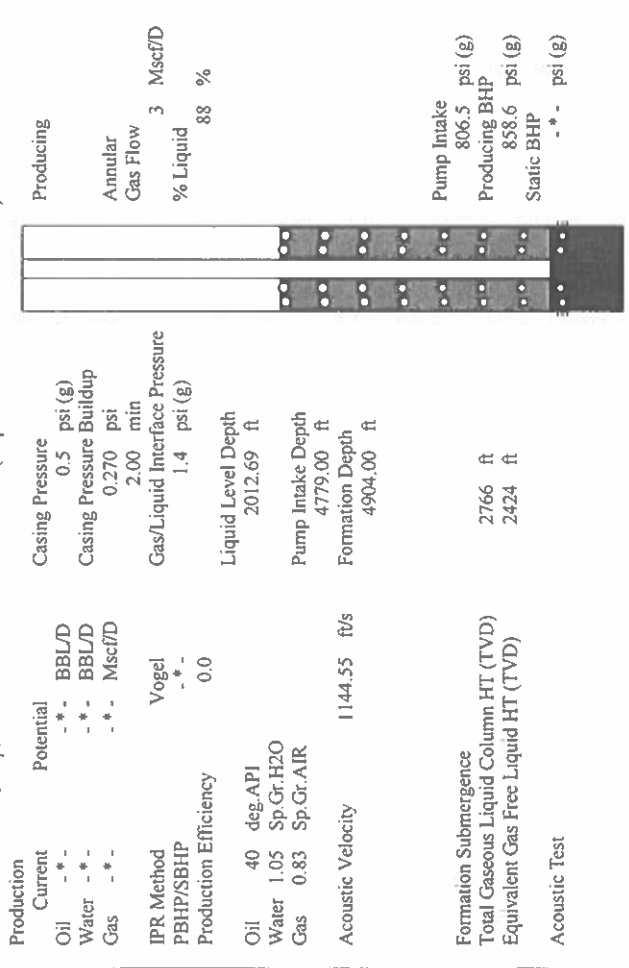
Filter Type High Pass Automatic Collar Count Yes Time 3.517 sec  
 Manual Acoustic Veloc 1118.86 ft/s Manual JTS/sec 17.7936 Joints 64.0167 Jts  
 Depth 2012.69 ft

[ 0.5 to 1.5 (Sec) ]



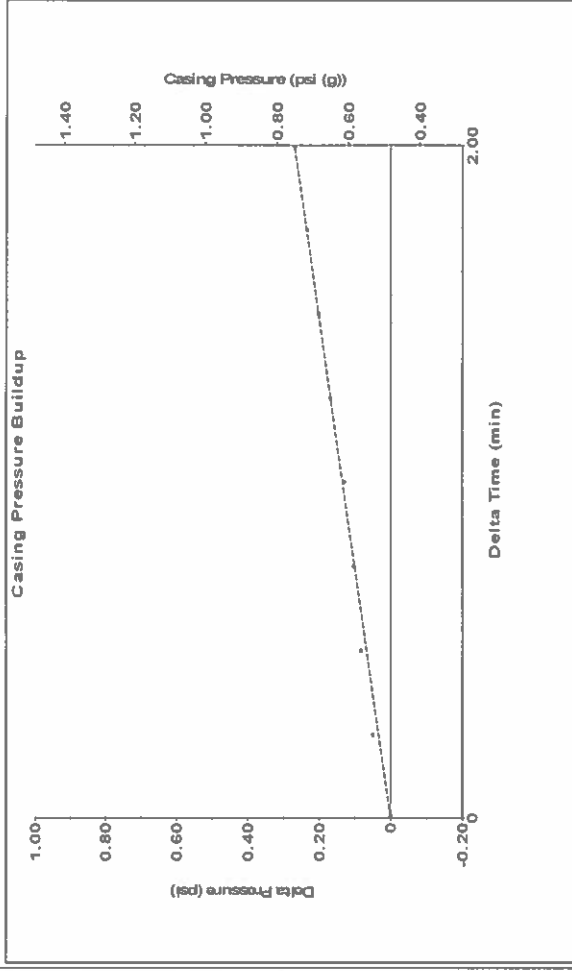
Analysis Method: Automatic

Group: Route 2 Well: Henselmann A3 (acquired on: 07/10/24 13:45:32 )



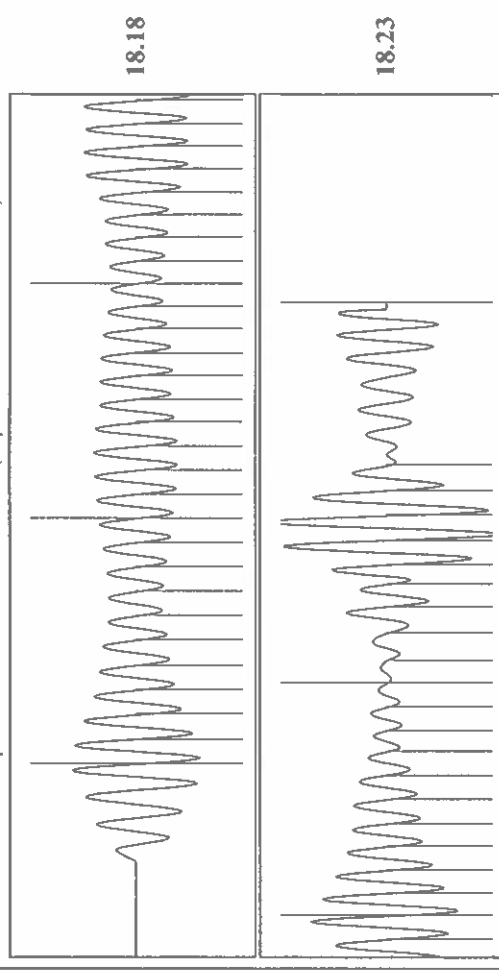
Production Current Potential Casing Pressure 0.5 psi (g)  
 Oil - \* - BBL/D Casing Pressure Buildup  
 Water - \* - BBL/D 0.270 psi  
 Gas - \* - Mscf/D 2.00 min  
 IPR Method Vogel Gas/Liquid Interface Pressure  
 PBHP/SBHP - \* - 1.4 psi (g)  
 Production Efficiency 0.0  
 Oil 40 deg API Liquid Level Depth  
 Water 1.05 Sp.Gr.H2O 2012.69 ft  
 Gas 0.83 Sp.Gr.AIR Pump Intake Depth  
 Acoustic Velocity 1144.55 ft/s Formation Depth 4779.00 ft  
 4904.00 ft  
 Formation Submergence  
 Total Gaseous Liquid Column HT (TVD) 2766 ft  
 Equivalent Gas Free Liquid HT (TVD) 2424 ft  
 Acoustic Test  
 Producing  
 Annular Gas Flow 3 Mscf/D  
 % Liquid 88 %  
 Pump Intake 806.5 psi (g)  
 Producing BHP 858.6 psi (g)  
 Static BHP - \* - psi (g)

Group: Route 2 Well: Henselmann A3 (acquired on: 07/10/24 13:45:32 )



Change in Pressure 0.27 psi PT 14654 Range  
 Change in Time 2.00 min

Group: Route 2 Well: Henselmann A3 (acquired on: 07/10/24 13:45:32 )



Acoustic Velocity 1144.55 ft/s Joints counted 49  
 Joints Per Second 18.2021 jts/sec Joints to liquid level 64.0167  
 Depth to liquid level 2012.69 ft Filter Width 15.7936  
 Automatic Collar Count Yes Time to 1st Collar 0.448 3.14

Conservation Division  
District Office No. 1  
210 E. Frontview, Suite A  
Dodge City, KS 67801



Phone: 620-682-7933  
<http://kcc.ks.gov/>

Andrew J. French, Chairperson  
Dwight D. Keen, Commissioner  
Annie Kuether, Commissioner

Laura Kelly, Governor

07/23/2024

Katherine McClurkan  
Merit Energy Company, LLC  
13727 Noel Road, Suite 1200  
Dallas, TX 75240-7362

Re: Temporary Abandonment  
API 15-055-21105-00-03  
Henselmann A 3  
NE/4 Sec.34-22S-34W  
Finney County, Kansas

Dear Katherine McClurkan:

"Your temporary abandonment (TA) application for the well listed above has been approved. In accordance with K.A.R. 82-3-111 the TA status of this well will expire 07/23/2025.

- \* If you return this well to service or plug it, please notify the District Office.
- \* If you sell this well you are required to file a Transfer of Operator form, T-1.
- \* If the well will remain temporarily abandoned, you must submit a new TA application, CP-111, before 07/23/2025.

You may contact me at the number above if you have questions.

Very truly yours,

Michael Maier"