

KANSAS CORPORATION COMMISSION
OIL & GAS CONSERVATION DIVISION

TEMPORARY ABANDONMENT WELL APPLICATION

All blanks must be complete

OPERATOR: License# _____
 Name: _____
 Address 1: _____
 Address 2: _____
 City: _____ State: _____ Zip: _____ + _____
 Contact Person: _____
 Phone: (_____) _____
 Contact Person Email: _____
 Field Contact Person: _____
 Field Contact Person Phone: (_____) _____

API No. 15- _____
 Spot Description: _____
 _____ - _____ - _____ - _____ Sec. _____ Twp. _____ S. R. _____ E W
 _____ feet from N / S Line of Section
 _____ feet from E / W Line of Section
 GPS Location: Lat: _____, Long: _____
(e.g. xx.xxxxx) (e.g. -xxx.xxxxx)
 Datum: NAD27 NAD83 WGS84
 County: _____ Elevation: _____ GL KB
 Lease Name: _____ Well #: _____
 Well Type: (check one) Oil Gas OG WSW Other: _____
 SWD Permit #: _____ ENHR Permit #: _____
 Gas Storage Permit #: _____
 Spud Date: _____ Date Shut-In: _____

	Conductor	Surface	Production	Intermediate	Liner	Tubing
Size						
Setting Depth						
Amount of Cement						
Top of Cement						
Bottom of Cement						

Casing Fluid Level from Surface: _____ How Determined? _____ Date: _____
 Casing Squeeze(s): _____ to _____ w / _____ sacks of cement, _____ to _____ w / _____ sacks of cement. Date: _____
(top) (bottom) (top) (bottom)
 Do you have a valid Oil & Gas Lease? Yes No
 Depth and Type: Junk in Hole at _____ Tools in Hole at _____ Casing Leaks: Yes No Depth of casing leak(s): _____
(depth) (depth)
 Type Completion: ALT. I ALT. II Depth of: DV Tool: _____ w / _____ sacks of cement Port Collar: _____ w / _____ sack of cement
(depth) (depth)
 Packer Type: _____ Size: _____ Inch Set at: _____ Feet
 Total Depth: _____ Plug Back Depth: _____ Plug Back Method: _____

Geological Data:

Formation Name	Formation Top	Formation Base	Completion Information
1. _____	At: _____	to _____ Feet	Perforation Interval _____ to _____ Feet or Open Hole Interval _____ to _____ Feet
2. _____	At: _____	to _____ Feet	Perforation Interval _____ to _____ Feet or Open Hole Interval _____ to _____ Feet

UNDER PENALTY OF PERJURY I HEREBY ATTEST THAT THE INFORMATION CONTAINED HEREIN IS TRUE AND CORRECT TO THE BEST OF MY KNOWLEDGE

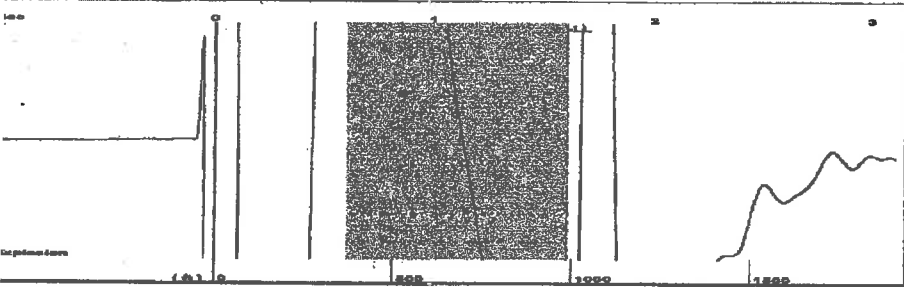
Submitted Electronically

Do NOT Write in This Space - KCC USE ONLY	Date Tested: _____	Results: _____	Date Plugged: _____	Date Repaired: _____	Date Put Back in Service: _____
	Review Completed by: _____ Comments: _____				
TA Approved: <input type="checkbox"/> Yes <input type="checkbox"/> Denied Date: _____					

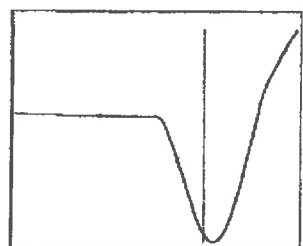
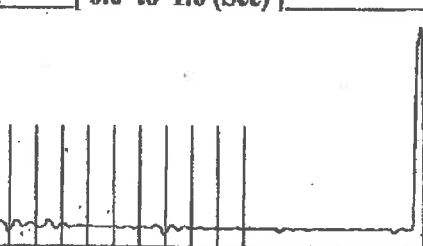
Mail to the Appropriate KCC Conservation Office:

	KCC District Office #1 - 210 E. Frontview, Suite A, Dodge City, KS 67801	Phone 620.682.7933
	KCC District Office #2 - 3450 N. Rock Road, Building 600, Suite 601, Wichita, KS 67226	Phone 316.337.7400
	KCC District Office #3 - 137 E. 21st St., Chanute, KS 66720	Phone 620.902.6450
	KCC District Office #4 - 2301 E. 13th Street, Hays, KS 67601-2651	Phone 785.261.6250

Group: Radium Well: Foster Trust A 1-1 (acquired on: 07/18/24 16:02:51)

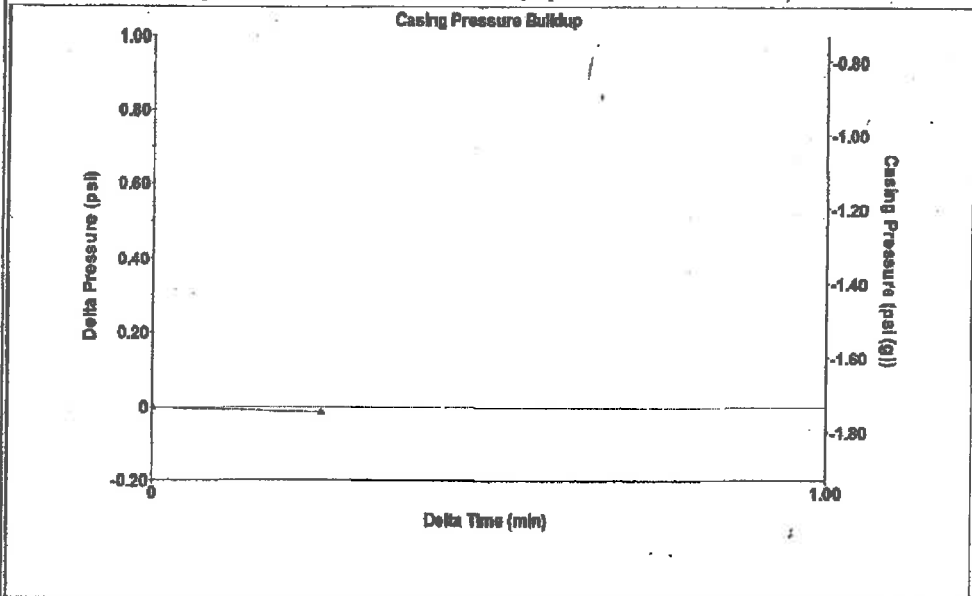


Type High Pass Automatic Collar Count Yes Time 1.608 sec
 Acoustic Velocity 1226.42 ft/s Manual JTS/sec 18.8679 Joints 30.3396 Jts
 Depth 986.04 ft



Analysis Method: Automatic

Group: Radium Well: Foster Trust A 1-1 (acquired on: 07/18/24 16:02:51)



Change in Pressure -0.02 psi PT13440
 Change in Time 0.25 min Range 0 - ? psi

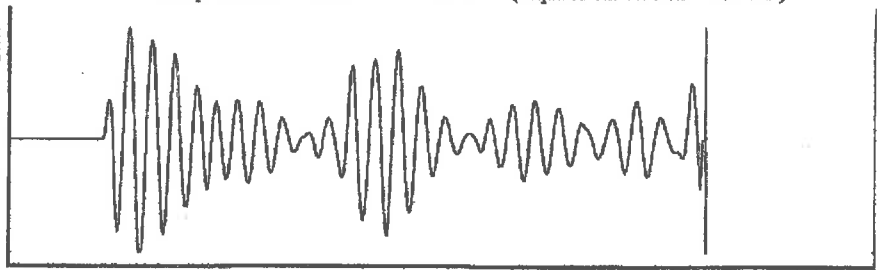
Group: Radium Well: Foster Trust A 1-1 (acquired on: 07/18/24 16:02:51)

Production Potential Casing Pressure
 -*- BBL/D -1.7 psi (g)
 -*- BBL/D Casing Pressure Buildup
 -*- Mscf/D -0.0 psi
 0.25 min
 Method Vogel Gas/Liquid Interface Pressure
 %SBHP -*- -1.4 psi (g)
 Production Efficiency 0.0
 40 deg API Liquid Level Depth
 1:05 Sp.Gr.H2O 986.04 ft
 0.75 Sp.Gr.AIR Pump Intake Depth
 3640.00 ft
 Acoustic Velocity 1226.42 ft/s Formation Depth
 3778.00 ft



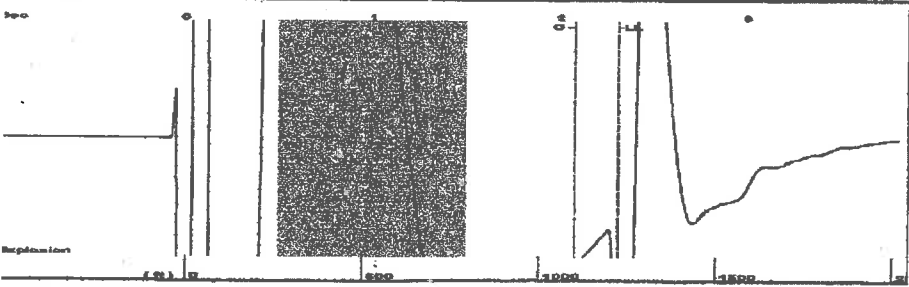
Producing
 Annular Gas Flow 0 Mscf/D
 % Liquid 100 %
 Pump Intake 879.9 psi (g)
 Producing BHP 942.7 psi (g)
 Static BHP -*- psi (g)

Group: Radium Well: Foster Trust A 1-1 (acquired on: 07/18/24 16:02:51)



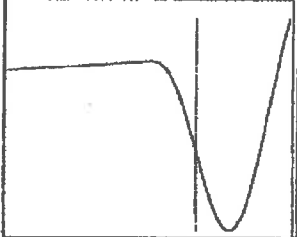
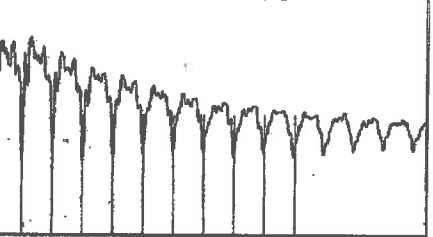
Acoustic Velocity -*- ft/s Joints counted 0
 Joints Per Second -*- jts/sec Joints to liquid level -*-
 Depth to liquid level -*- ft Filter Width 16.8679 20.8679
 Automatic Collar Count Yes Time to 1st Collar -*-

Group: Radium Well: Oetken 1-2 (acquired on: 07/18/24 16:21:28)



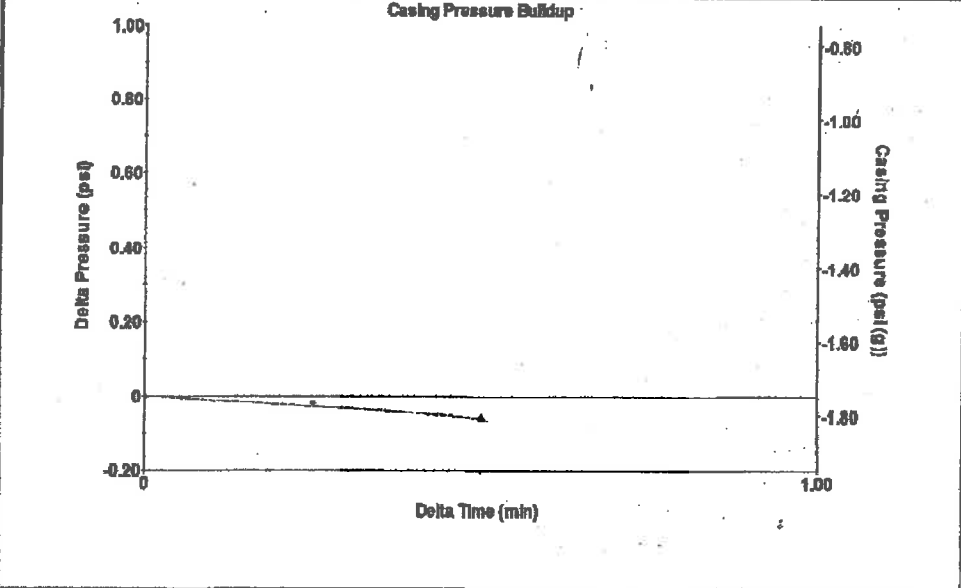
Type High Pass Automatic Collar Count Yes Time 2.308 sec
 Acoustic Velocity 1054.93 ft/s Manual JTS/sec 16,1551 Joints 37.434 Jts
 Depth 1222.22 ft

[0.5 to 1.5 (Sec)]



Analysis Method: Automatic

Group: Radium Well: Oetken 1-2 (acquired on: 07/18/24 16:21:28)



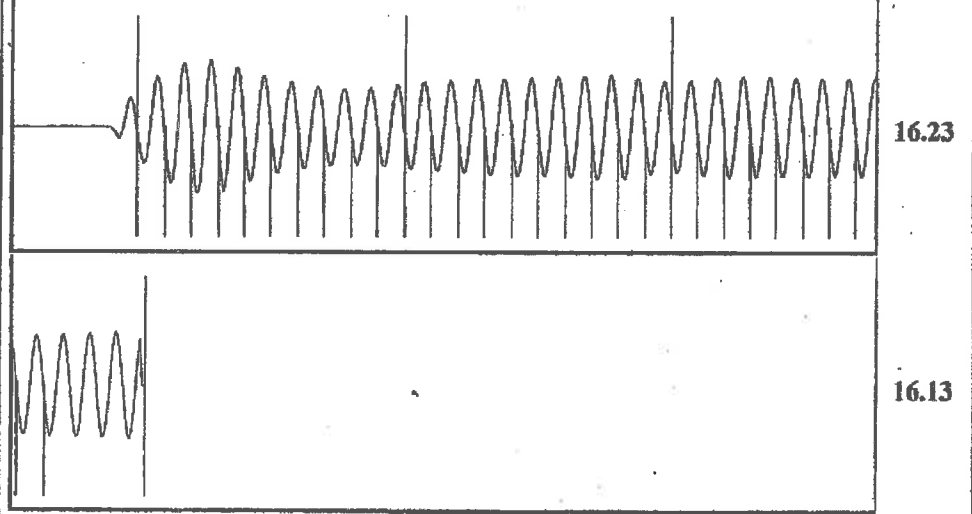
Change in Pressure -0.06 psi PT13440
 Change in Time 0.50 min Range 0 - ? psi

Group: Radium Well: Oetken 1-2 (acquired on: 07/18/24 16:21:28)

Current	Potential	Casing Pressure	Producing
-*- BBL/D	-*- BBL/D	-1.7 psi (g)	
-*- BBL/D	-*- BBL/D	Casing Pressure Buildup	Annular Gas Flow
-*- Mscf/D	-*- Mscf/D	-0.1 psi	0 Mscf/D
		0.50 min	% Liquid
		Gas/Liquid Interface Pressure	100 %
		-1.2 psi (g)	
Method	Vogel	Liquid Level Depth	
P/SBHP	-*-	1222.22 ft	
Efficiency	0.0	Pump Intake Depth	
		3650.00 ft	
		Formation Depth	
		3697.00 ft	
		Pump Intake	
		805.2 psi (g)	
		Producing BHP	
		826.6 psi (g)	
		Static BHP	
		-*- psi (g)	

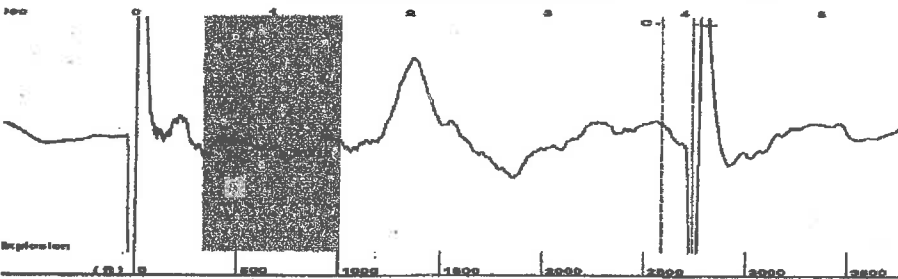


Group: Radium Well: Oetken 1-2 (acquired on: 07/18/24 16:21:28)



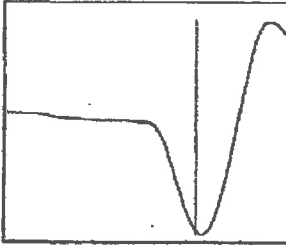
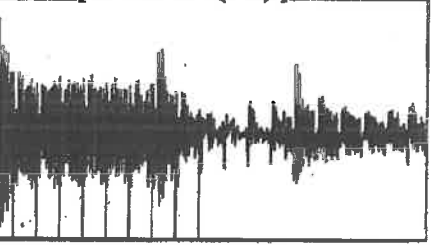
Acoustic Velocity 1059.12 ft/s Joints counted 29
 Joints Per Second 16.2192 jts/sec Joints to liquid level 37.434
 Depth to liquid level 1222.22 ft Filter Width 14.1551 18.1551
 Automatic Collar Count Yes Time to 1st Collar 0.288 2.076

Group: Belpre Well: Aldrich B 2-32 (acquired on: 07/16/24 13:56:16)



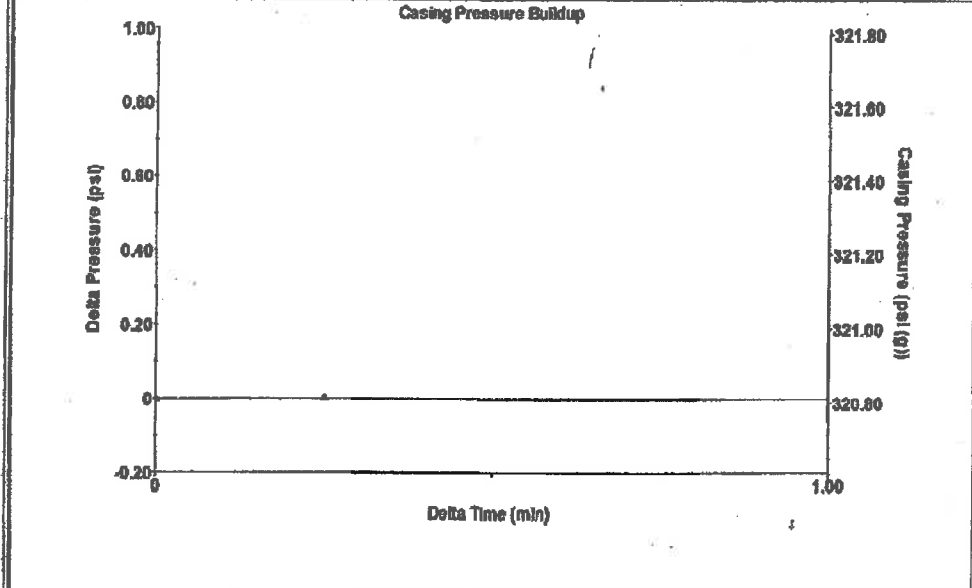
Type High Pass Automatic Collar Count Yes Time 4.062 sec
 Acoustic Velocity 1343.22 ft/s Manual JTS/sec 21.1864 Joints 86.352 Jts
 Depth 2737.36 ft

[0.5 to 1.5 (Sec)]



Analysis Method: Automatic

Group: Belpre Well: Aldrich B 2-32 (acquired on: 07/16/24 13:56:16)

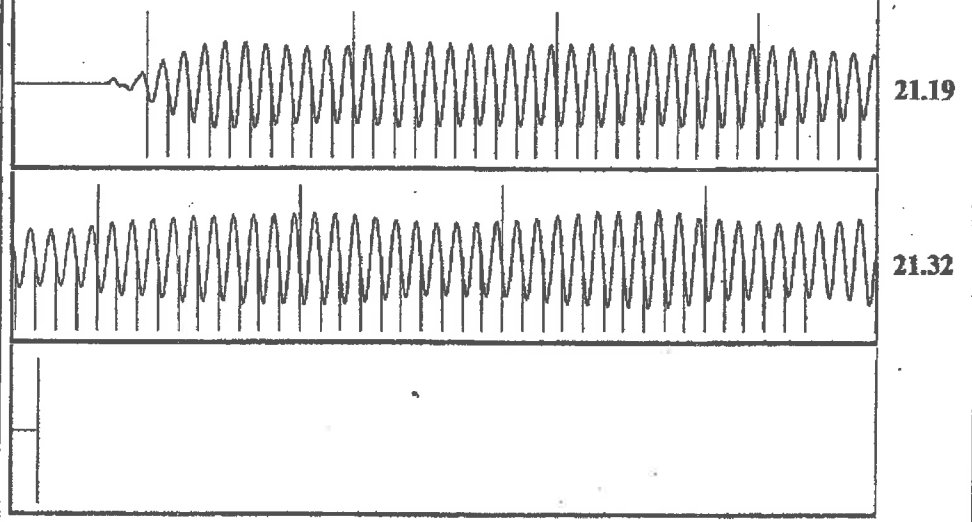


Change in Pressure 0.00 psi PT13440 Range 0-? psi
 Change in Time 0.25 min

Group: Belpre Well: Aldrich B 2-32 (acquired on: 07/16/24 13:56:16)

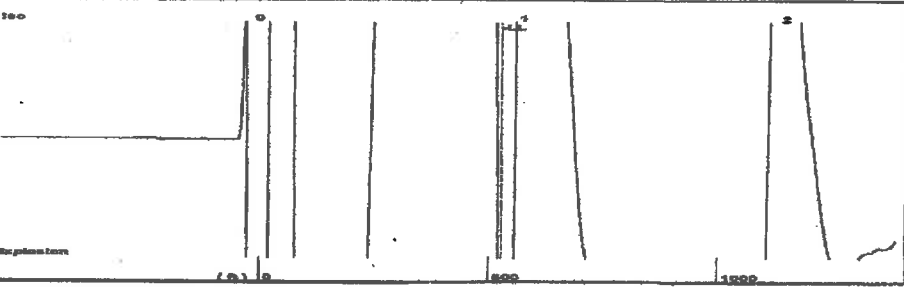
Action Current Potential Method P/SBHP Action Efficiency 40 deg API r 1.05 Sp.Gr.H2O 0.63 Sp.Gr.AIR Acoustic Velocity 1347.79 ft/s Pump Intake Submergence Gaseous Liquid Column HT (TVD) 1571 ft Equivalent Gas Free Liquid HT (TVD) 1571 ft Acoustic Test	Casing Pressure 320.8 psi (g) Casing Pressure Buildup 0.0 psi 0.25 min Gas/Liquid Interface Pressure 342.0 psi (g) Liquid Level Depth 2737.36 ft Pump Intake Depth Formation Depth 4308.00 ft Pump Intake - * - psi (g) Producing BHP 1056.1 psi (g) Static BHP - * - psi (g)	Producing Annular Gas Flow 0 Mscf/D % Liquid 100 %
--	--	--

Group: Belpre Well: Aldrich B 2-32 (acquired on: 07/16/24 13:56:16)



Acoustic Velocity	1347.79 ft/s	Joints counted	75
Joints Per Second	21.2585 jts/sec	Joints to liquid level	86.382
Depth to liquid level	2737.36 ft	Filter Width	19.1864 23.1864
Automatic Collar Count	Yes	Time to 1st Collar	0.308 3.836

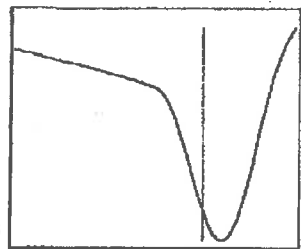
Group: Belpre Well: Embry a 2-23 (acquired on: 07/16/24 14:53:31)



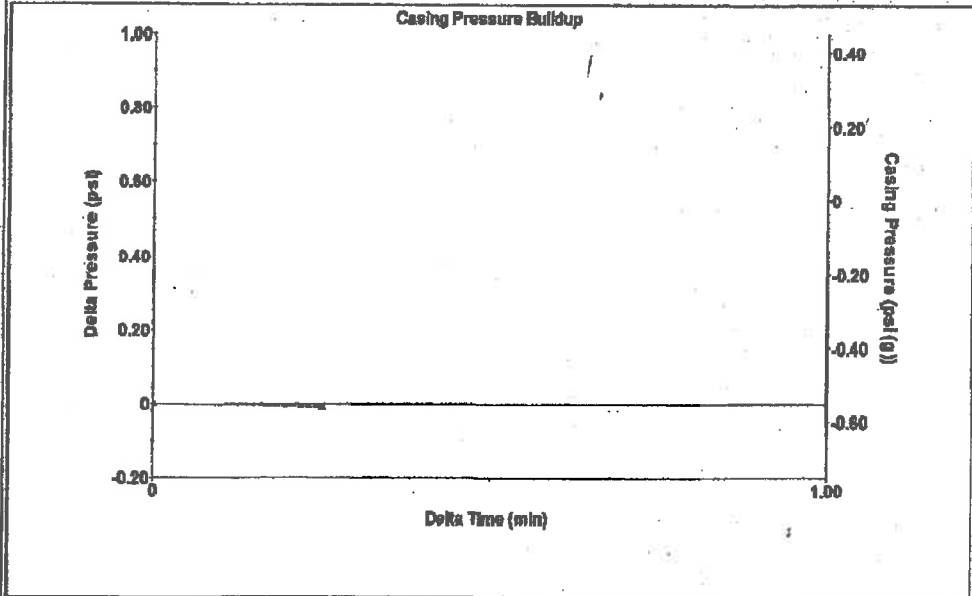
Time 0.917 sec
 Joints 17.0529 Jts
 Depth 527.27 ft

Liquid level calculated with user supplied Acoustic Velocity

Acoustic Velocity 1150 ft/s



Group: Belpre Well: Embry a 2-23 (acquired on: 07/16/24 14:53:31)



Change in Pressure -0.01 psi PT13440
 Range 0 - 7 psi
 Change in Time 0.25 min

Analysis Method: Acoustic Velocity

Group: Belpre Well: Embry a 2-23 (acquired on: 07/16/24 14:53:31)

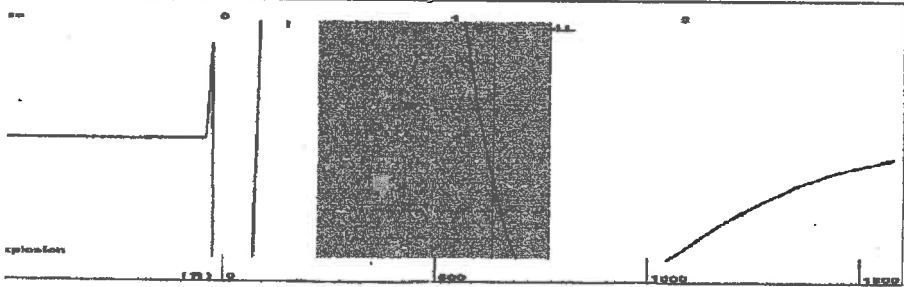
Production	Potential	Casing Pressure	Producing
Current	-*- BBL/D	-0.6 psi (g)	
	-*- BBL/D	Casing Pressure Buildup	Annular Gas Flow
	-*- Mscf/D	-0.0 psi	0 Mscf/D
		0.25 min	% Liquid
Method	Vogel	Gas/Liquid Interface Pressure	100 %
P/SBHP	-*-	-0.3 psi (g)	
Injection Efficiency	0.0		
		Liquid Level Depth	
		527.27 ft	
		Pump Intake Depth	
		3804.00 ft	
		Formation Depth	
		3784.00 ft	
Acoustic Velocity	1150 ft/s		
		Pump Intake	
		1074.3 psi (g)	
		Producing BHP	
		1068.2 psi (g)	
		Static BHP	
		-*- psi (g)	
Injection Submergence			
Gaseous Liquid Column HT (TVD)	3277 ft		
Equivalent Gas Free Liquid HT (TVD)	3277 ft		
Acoustic Test			



Group: Belpre Well: Embry a 2-23 (acquired on: 07/16/24 14:53:31)

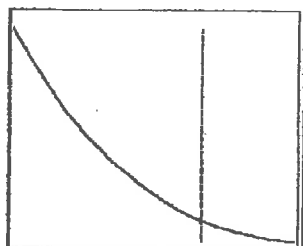
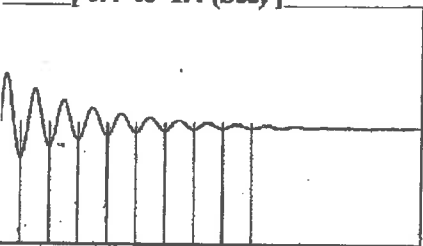
Entered Acoustic Velocity for Liquid Level depth determination

Group: Belpre Well: Embry A 4-23 (acquired on: 07/16/24 14:38:33)



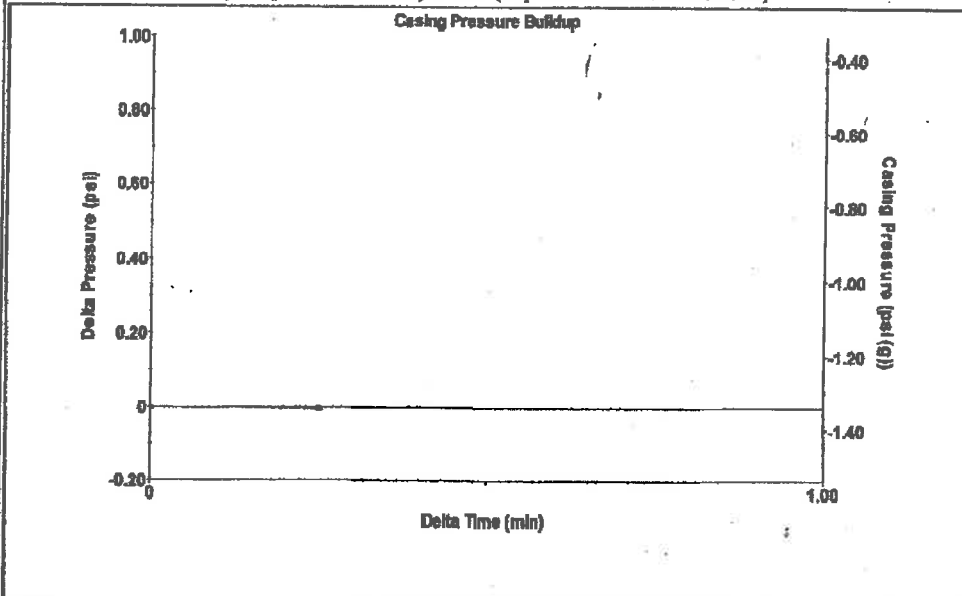
Type High Pass Automatic Collar Count Yes Time 1.414 sec
 Acoustic Vel 1086.05 ft/s Manual JTS/sec 17.0068 Joints 23.9932 Jts
 Depth 766.10 ft

[0.4 to 1.4 (Sec)]



Analysis Method: Automatic

Group: Belpre Well: Embry A 4-23 (acquired on: 07/16/24 14:38:33)



Change in Pressure -0.00 psi PT13440
 Change in Time 0.25 min Range 0-? psi

Group: Belpre Well: Embry A 4-23 (acquired on: 07/16/24 14:38:33)

Condition Potential Casing Pressure
 -*- BBL/D -1.3 psi (g)
 -*- BBL/D Casing Pressure Buildup
 -*- Msc/D -0.0 psi
 0.25 min

Method /SBHP Vogel Gas/Liquid Interface Pressure
 Condition Efficiency 0.0 -1.0 psi (g)
 40 deg API Liquid Level Depth
 1.05 Sp.Gr.H2O 766.10 ft
 0.88 Sp.Gr.AIR Pump Intake Depth
 Acoustic Velocity 1083.6 ft/s 3992.00 ft
 Formation Depth 3785.00 ft



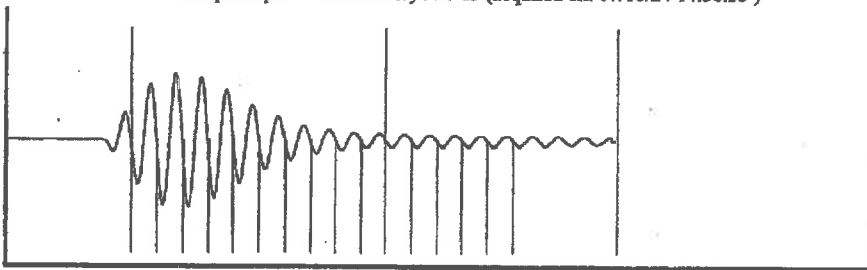
Producing
 Annular Gas Flow 0 Macf/D
 % Liquid 100 %

Pump Intake 1055.5 psi (g)
 Producing BHP 992.2 psi (g)
 Static BHP -*- psi (g)

Condition Submergence 3226 ft
 Gaseous Liquid Column HT (TVD) 3226 ft
 Silent Gas Free Liquid HT (TVD)

Condition Test

Group: Belpre Well: Embry A 4-23 (acquired on: 07/16/24 14:38:33)



Acoustic Velocity 1083.6 ft/s Joints counted 15
 Joints Per Second 16.9683 jts/sec Joints to liquid level 23.9932
 Depth to liquid level 766.103 ft Filter Width 15.0068 19.0068
 Automatic Collar Count Yes Time to 1st Collar 0.288 1.172

Conservation Division
District Office No. 1
210 E. Frontview, Suite A
Dodge City, KS 67801



Phone: 620-682-7933
<http://kcc.ks.gov/>

Andrew J. French, Chairperson
Dwight D. Keen, Commissioner
Annie Kuether, Commissioner

Laura Kelly, Governor

07/23/2024

Loveness Mpanje
F. G. Holl Company L.L.C.
9431 E CENTRAL STE 100
WICHITA, KS 67206-2563

Re: Temporary Abandonment
API 15-145-21756-00-01
FOSTER TRUST 'A' 1-1
NE/4 Sec.01-21S-16W
Pawnee County, Kansas

Dear Loveness Mpanje:

"Your temporary abandonment (TA) application for the well listed above has been approved. In accordance with K.A.R. 82-3-111 the TA status of this well will expire 07/23/2025.

- * If you return this well to service or plug it, please notify the District Office.
- * If you sell this well you are required to file a Transfer of Operator form, T-1.
- * If the well will remain temporarily abandoned, you must submit a new TA application, CP-111, before 07/23/2025.

You may contact me at the number above if you have questions.

Very truly yours,

Michael Maier"