

KANSAS CORPORATION COMMISSION
OIL & GAS CONSERVATION DIVISION

TEMPORARY ABANDONMENT WELL APPLICATION

OPERATOR: License#
Name:
Address 1:
Address 2:
City: State: Zip:
Contact Person:
Phone:
Contact Person Email:
Field Contact Person:
Field Contact Person Phone:

API No. 15-
Spot Description:
Sec. Twp. S. R.
GPS Location: Lat: Long:
Datum: NAD27 NAD83 WGS84
County: Elevation:
Lease Name: Well #:
Well Type: Oil Gas OG WSW Other:
SWD Permit #: ENHR Permit #:
Gas Storage Permit #:
Spud Date: Date Shut-In:

Table with 7 columns: Conductor, Surface, Production, Intermediate, Liner, Tubing. Rows include Size, Setting Depth, Amount of Cement, Top of Cement, Bottom of Cement.

Casing Fluid Level from Surface: How Determined? Date:
Casing Squeeze(s): to w / sacks of cement, to w / sacks of cement. Date:
Do you have a valid Oil & Gas Lease? Yes No
Depth and Type: Junk in Hole at Tools in Hole at Casing Leaks: Yes No Depth of casing leak(s):
Type Completion: ALT. I ALT. II Depth of: DV Tool: w / sacks of cement Port Collar: w / sack of cement
Packer Type: Size: Inch Set at: Feet
Total Depth: Plug Back Depth: Plug Back Method:

Geological Data:

Table with 4 columns: Formation Name, Formation Top, Formation Base, Completion Information. Rows 1 and 2.

UNDER PENALTY OF PERJURY I HEREBY ATTEST THAT THE INFORMATION CONTAINED HEREIN IS TRUE AND CORRECT TO THE BEST OF MY KNOWLEDGE

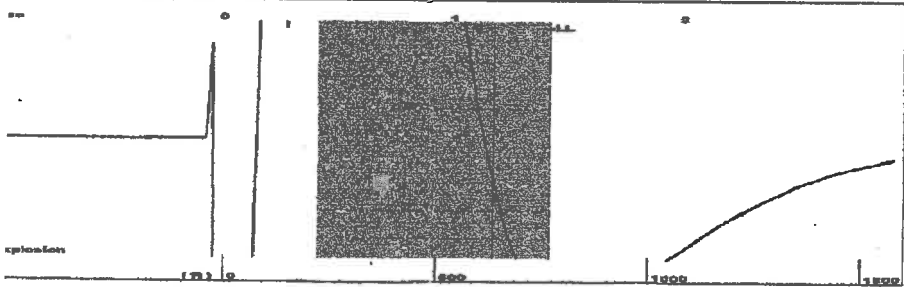
Submitted Electronically

Do NOT Write in This Space - KCC USE ONLY
Date Tested: Results: Date Plugged: Date Repaired: Date Put Back in Service:
Review Completed by: Comments:
TA Approved: Yes Denied Date:

Mail to the Appropriate KCC Conservation Office:

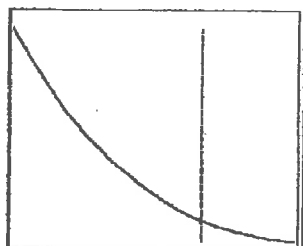
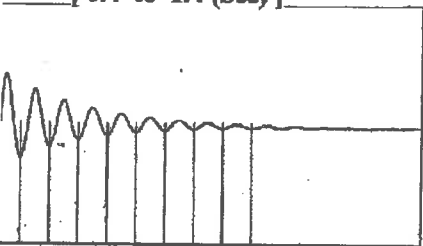
Table with 2 columns: Office Address, Phone. Rows for District Office #1, #2, #3, #4.

Group: Belpre Well: Embry A 4-23 (acquired on: 07/16/24 14:38:33)



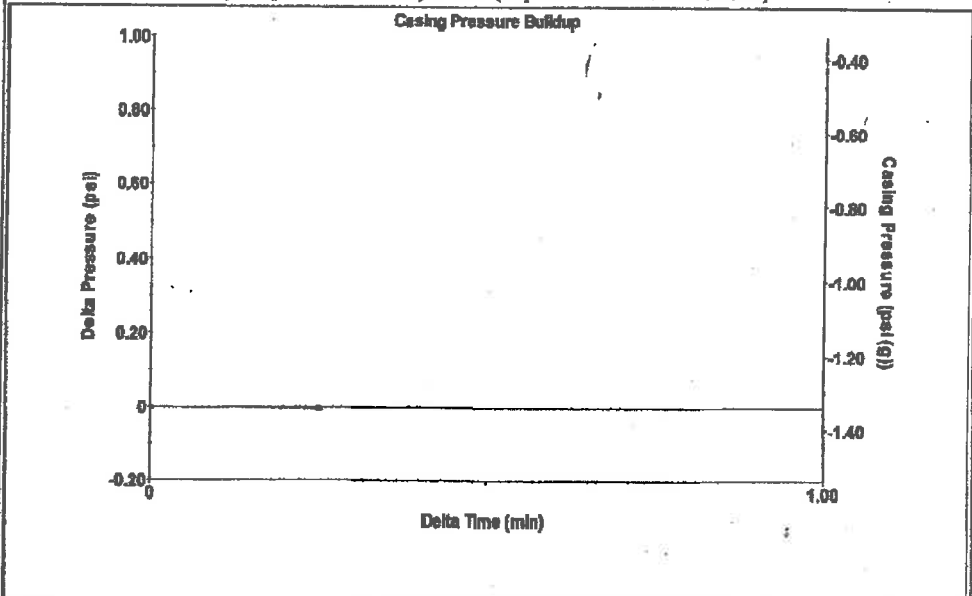
Type High Pass Automatic Collar Count Yes Time 1.414 sec
 Acoustic Vel 1086.05 ft/s Manual JTS/sec 17.0068 Joints 23.9932 Jts
 Depth 766.10 ft

[0.4 to 1.4 (Sec)]



Analysis Method: Automatic

Group: Belpre Well: Embry A 4-23 (acquired on: 07/16/24 14:38:33)



Change in Pressure -0.00 psi PT13440
 Change in Time 0.25 min Range 0-? psi

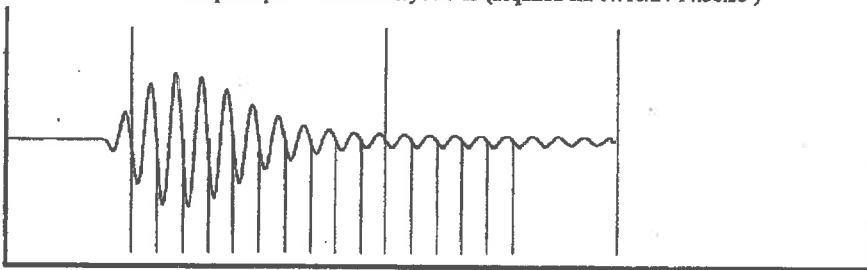
Group: Belpre Well: Embry A 4-23 (acquired on: 07/16/24 14:38:33)

Condition Potential Casing Pressure
 -*- BBL/D -1.3 psi (g)
 -*- BBL/D Casing Pressure Buildup
 -*- Msc/D -0.0 psi
 0.25 min
 Method Vogel Gas/Liquid Interface Pressure
 /SBHP -*- -1.0 psi (g)
 Condition Efficiency 0.0
 40 deg API Liquid Level Depth
 1.05 Sp.Gr.H2O 766.10 ft
 0.88 Sp.Gr.AIR Pump Intake Depth
 Acoustic Velocity 1083.6 ft/s Formation Depth
 3785.00 ft



Producing
 Annular Gas Flow 0 Macf/D
 % Liquid 100 %
 Pump Intake 1055.5 psi (g)
 Producing BHP 992.2 psi (g)
 Static BHP -*- psi (g)

Group: Belpre Well: Embry A 4-23 (acquired on: 07/16/24 14:38:33)



Acoustic Velocity 1083.6 ft/s Joints counted 15
 Joints Per Second 16.9683 jts/sec Joints to liquid level 23.9932
 Depth to liquid level 766.103 ft Filter Width 15.0068 19.0068
 Automatic Collar Count Yes Time to 1st Collar 0.288 1.172

Conservation Division
District Office No. 1
210 E. Frontview, Suite A
Dodge City, KS 67801



Phone: 620-682-7933
<http://kcc.ks.gov/>

Andrew J. French, Chairperson
Dwight D. Keen, Commissioner
Annie Kuether, Commissioner

Laura Kelly, Governor

07/23/2024

Loveness Mpanje
F. G. Holl Company L.L.C.
9431 E CENTRAL STE 100
WICHITA, KS 67206-2563

Re: Temporary Abandonment
API 15-047-20944-00-00
EMBRY - A 4-23
NW/4 Sec.23-24S-16W
Edwards County, Kansas

Dear Loveness Mpanje:

"Your temporary abandonment (TA) application for the well listed above has been approved. In accordance with K.A.R. 82-3-111 the TA status of this well will expire 01/02/2025.

- * If you return this well to service or plug it, please notify the District Office.
- * If you sell this well you are required to file a Transfer of Operator form, T-1.
- * If the well will remain temporarily abandoned, you must submit a new TA application, CP-111, before 01/02/2025.

You may contact me at the number above if you have questions.

Very truly yours,

Michael Maier"