

KANSAS CORPORATION COMMISSION
OIL & GAS CONSERVATION DIVISION

TEMPORARY ABANDONMENT WELL APPLICATION

OPERATOR: License#
Name:
Address 1:
Address 2:
City: State: Zip:
Contact Person:
Phone:
Contact Person Email:
Field Contact Person:
Field Contact Person Phone:

API No. 15-
Spot Description:
Sec. Twp. S. R.
GPS Location: Lat: Long:
Datum: NAD27 NAD83 WGS84
County: Elevation:
Lease Name: Well #:
Well Type: Oil Gas OG WSW Other:
SWD Permit #: ENHR Permit #:
Gas Storage Permit #:
Spud Date: Date Shut-In:

Table with 7 columns: Conductor, Surface, Production, Intermediate, Liner, Tubing. Rows include Size, Setting Depth, Amount of Cement, Top of Cement, Bottom of Cement.

Casing Fluid Level from Surface: How Determined? Date:
Casing Squeeze(s): to w / sacks of cement, to w / sacks of cement. Date:
Do you have a valid Oil & Gas Lease? Yes No
Depth and Type: Junk in Hole at Tools in Hole at Casing Leaks: Yes No Depth of casing leak(s):
Type Completion: ALT. I ALT. II Depth of: DV Tool: w / sacks of cement Port Collar: w / sack of cement
Packer Type: Size: Inch Set at: Feet
Total Depth: Plug Back Depth: Plug Back Method:

Geological Data:

Table with 4 columns: Formation Name, Formation Top, Formation Base, Completion Information. Rows 1 and 2.

UNDER PENALTY OF PERJURY I HEREBY ATTEST THAT THE INFORMATION CONTAINED HEREIN IS TRUE AND CORRECT TO THE BEST OF MY KNOWLEDGE

Submitted Electronically

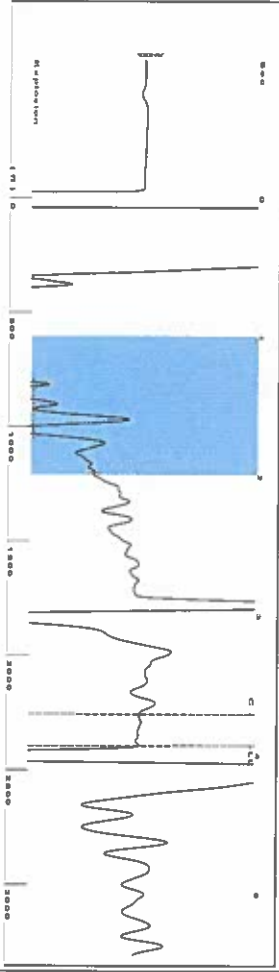
Do NOT Write in This Space - KCC USE ONLY
Date Tested: Results: Date Plugged: Date Repaired: Date Put Back in Service:
Review Completed by: Comments:
TA Approved: Yes Denied Date:

Mail to the Appropriate KCC Conservation Office:

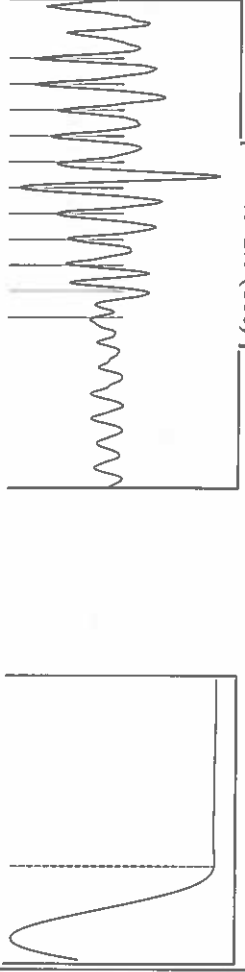
Table with 3 columns: District Office, Address, Phone. Rows for District Office #1, #2, #3, #4.

Shot @ 400# 57K

Group: Liberal Wells Well: Dudley 1-18 (acquired on: 07/03/24 08:44:38)



Filter Type: High Pass
Manual Acoustic Velocity: 191.73 ft/s
Automatic Collar Count: 18,797
Time: 3,933 sec
Joints: 75,4587 JIS
Depth: 2392.04 ft



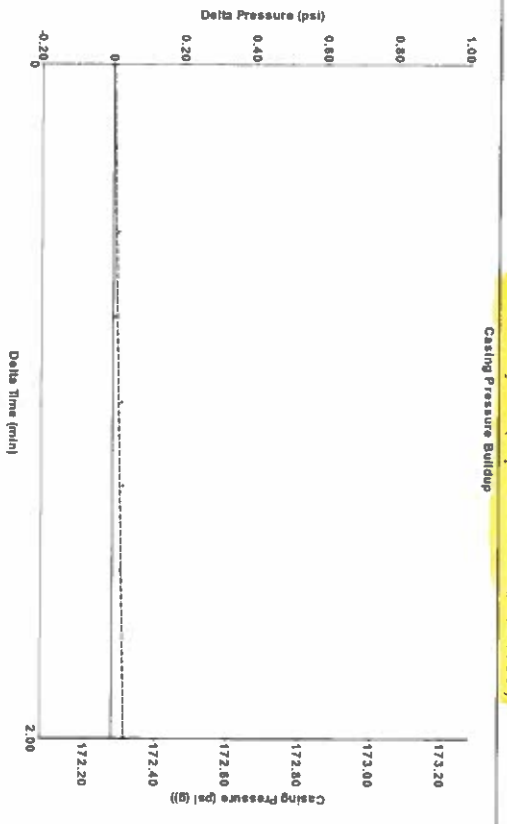
Analysis Method: Automatic

Group: Liberal Wells Well: Dudley 1-18 (acquired on: 07/03/24 08:44:38)

Production Current	0	Potential	BB/L/D	Casing Pressure	172.3 psi (g)	Static	
Oil	0	BB/L/D	BB/L/D	Casing Pressure Buildup	0.035 psi	Oil Column Height	0 ft
Water	0	Misc/D	Misc/D		2.00 min	MD	0 ft
Gas	0.0			Gas/Liquid Interface Pressure	184.4 psi (g)	Water Column Height	350 ft
IPR Method	PBHP/SBHP	Veget	0.0	Liquid Level Depth	2392.04 ft	Static BHP	343.5 psi (g)
Production Efficiency	0.0			Pump Intake Depth	2600.00 ft		
Oil	40 deg API			Formation Depth	2742.00 ft		
Water	1.05 Sp.Gr. H2O						
Gas	0.76 Sp.Gr. AIR						
Acoustic Velocity	1216.4 ft/s						

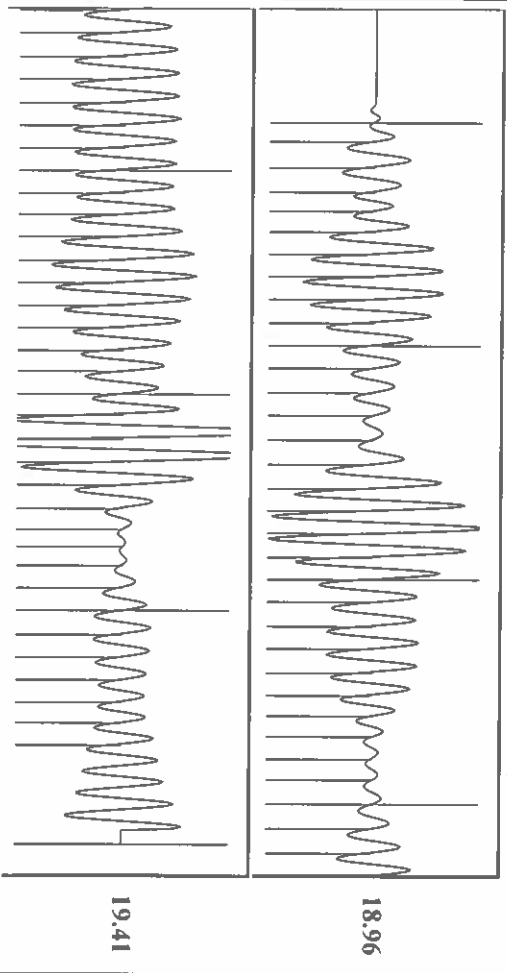


Group: Liberal Wells Well: Dudley 1-18 (acquired on: 07/03/24 08:44:38)



Change in Pressure: 0.04 psi
Change in Time: 2.00 min
PT11249
Range: 0 - 9 psi

Group: Liberal Wells Well: Dudley 1-18 (acquired on: 07/03/24 08:44:38)



Acoustic Velocity	1216.4 ft/s	Joints counted	66
Joints Per Second	19.186 JIS/sec	Joints to liquid level	75,4587
Depth to liquid level	2392.04 ft	Filter Width	16.797
Automatic Collar Count	Yes	Time to 1st Collar	0.264
			20.797
			3.704

07/23/2024

Katherine McClurkan
Merit Energy Company, LLC
13727 Noel Road, Suite 1200
Dallas, TX 75240-7362

Re: Temporary Abandonment
API 15-175-21424-00-00
Dudrey 1-18
NW/4 Sec.18-33S-31W
Seward County, Kansas

Dear Katherine McClurkan:

"Your temporary abandonment (TA) application for the well listed above has been approved. In accordance with K.A.R. 82-3-111 the TA status of this well will expire 07/23/2025.

- * If you return this well to service or plug it, please notify the District Office.
- * If you sell this well you are required to file a Transfer of Operator form, T-1.
- * If the well will remain temporarily abandoned, you must submit a new TA application, CP-111, before 07/23/2025.

You may contact me at the number above if you have questions.

Very truly yours,

Michael Maier"