

KANSAS CORPORATION COMMISSION
OIL & GAS CONSERVATION DIVISION

TEMPORARY ABANDONMENT WELL APPLICATION

OPERATOR: License#
Name:
Address 1:
Address 2:
City: State: Zip:
Contact Person:
Phone:
Contact Person Email:
Field Contact Person:
Field Contact Person Phone:

API No. 15-
Spot Description:
Sec. Twp. S. R.
GPS Location: Lat, Long
Datum: NAD27, NAD83, WGS84
County: Elevation:
Lease Name: Well #:
Well Type: Oil, Gas, OG, WSW, Other
SWD Permit #: ENHR Permit #:
Gas Storage Permit #:
Spud Date: Date Shut-In:

Table with 7 columns: Conductor, Surface, Production, Intermediate, Liner, Tubing. Rows include Size, Setting Depth, Amount of Cement, Top of Cement, Bottom of Cement.

Casing Fluid Level from Surface: How Determined? Date:
Casing Squeeze(s): to w / sacks of cement, to w / sacks of cement. Date:
Do you have a valid Oil & Gas Lease? Yes No
Depth and Type: Junk in Hole at Tools in Hole at Casing Leaks: Yes No Depth of casing leak(s):
Type Completion: ALT. I ALT. II Depth of: DV Tool: w / sacks of cement Port Collar: w / sack of cement
Packer Type: Size: Inch Set at: Feet
Total Depth: Plug Back Depth: Plug Back Method:

Geological Date:

Table with 4 columns: Formation Name, Formation Top, Formation Base, Completion Information. Rows 1 and 2.

UNDER PENALTY OF PERJURY I HEREBY ATTEST THAT THE INFORMATION CONTAINED HEREIN IS TRUE AND CORRECT TO THE BEST OF MY KNOWLEDGE

Submitted Electronically

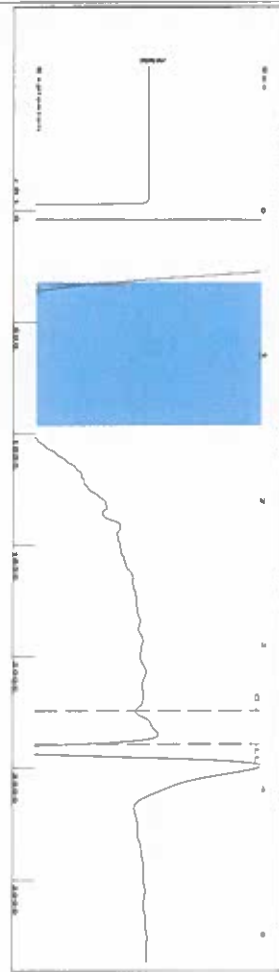
Do NOT Write in This Space - KCC USE ONLY
Date Tested: Results: Date Plugged: Date Repaired: Date Put Back in Service:
Review Completed by: Comments:
TA Approved: Yes Denied Date:

Mail to the Appropriate KCC Conservation Office:

Table with 3 columns: District Office #, Address, Phone. Rows 1-4.



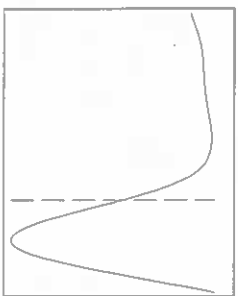
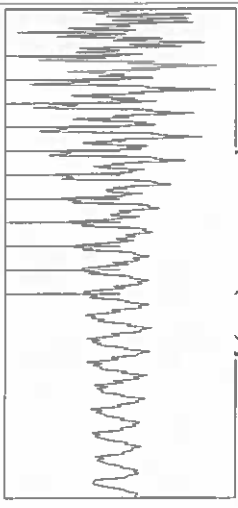
Group: SUBLETTE Well: Anton 3-21 (acquired on: 07/24/24 09:47:08)



Filter Type High Pass Automatic Collar Count Yes  
 Manual Acoustic Velo 1299.18 ft/s Manual JTS/sec 20,4918

Time 3.686 sec  
 Joints 75.4377 JIS  
 Depth 2391.37 ft

[ 0.5 to 1.5 (Sec) ]

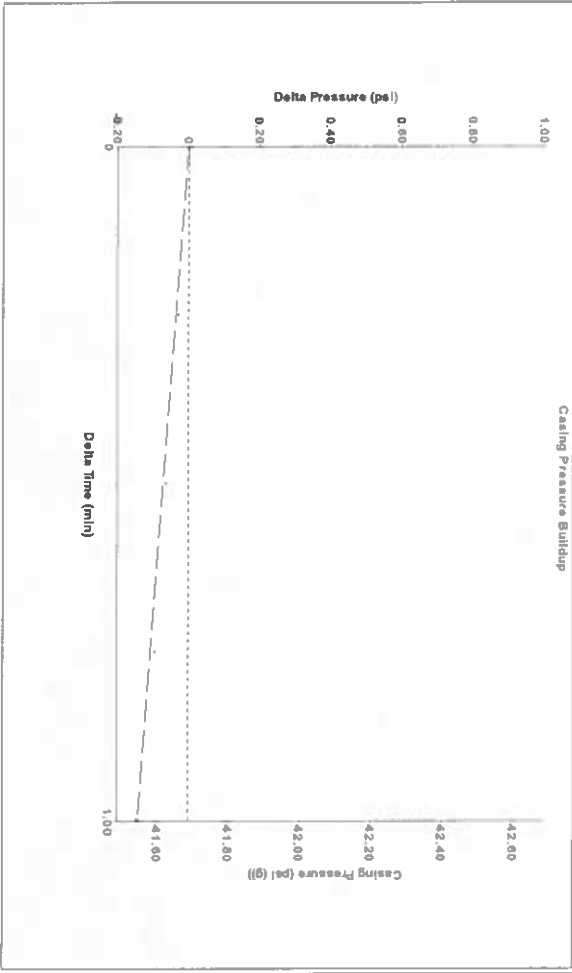


Analysis Method: Automatic

Group: SUBLETTE Well: Anton 3-21 (acquired on: 07/24/24 09:47:08)

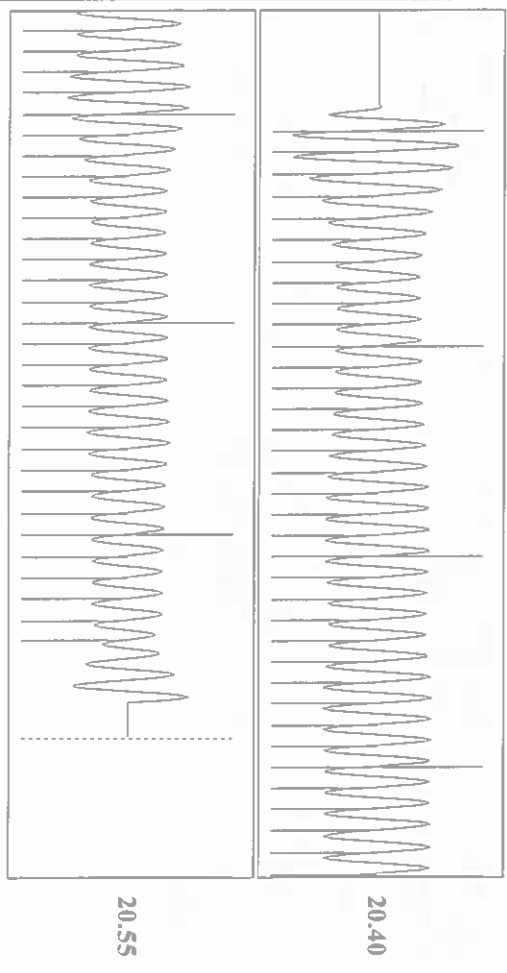
Production	Potential	Casing Pressure	Producing
Oil -*-	-*- BB/LD	41.7 psi (g)	Annular Gas Flow 0 Mscf/D
Water -*-	-*- BB/LD	Casing Pressure Buildup -0.142 psi	% Liquid 100 %
Gas -*-	-*- Mscf/D	1.00 min Gas/Liquid Interface Pressure 45.0 psi (g)	
IPR Method PBHP/SBHP	Vogel -*-	Liquid Level Depth 2391.37 ft	
Production Efficiency 0.0		Pump Intake Depth 2796.00 ft	
Oil 40 deg API		Formation Depth 2675.00 ft	
Water 1.05 Sp.Gr.H2O			
Gas 0.70 Sp.Gr.AIR			
Acoustic Velocity 1297.54 ft/s			
Formation Submergence			
Total Gaseous Liquid Column HT (TVD) 405 ft			
Equivalent Gas Free Liquid HT (TVD) 405 ft			
7/24/24			

Group: SUBLETTE Well: Anton 3-21 (acquired on: 07/24/24 09:47:08)



Change in Pressure -0.14 psi PT 14679  
 Change in Time 1.00 min Range 0 - ? psi

Group: SUBLETTE Well: Anton 3-21 (acquired on: 07/24/24 09:47:08)



Acoustic Velocity 1297.54 ft/s Joints counted 65  
 Joints Per Second 20.466 JIS/sec Joints to liquid level 75.4377  
 Depth to liquid level 2391.37 ft Filler Width 18.4918  
 Automatic Collar Count Yes Time to 1st Collar 0.28

Conservation Division  
District Office No. 1  
210 E. Frontview, Suite A  
Dodge City, KS 67801



Phone: 620-682-7933  
<http://kcc.ks.gov/>

Andrew J. French, Chairperson  
Dwight D. Keen, Commissioner  
Annie Kuether, Commissioner

Laura Kelly, Governor

07/25/2024

Katherine McClurkan  
Merit Energy Company, LLC  
13727 Noel Road, Suite 1200  
DALLAS, TX 75240-7362

Re: Temporary Abandonment  
API 15-081-21834-00-00  
Anton 3-21  
NE/4 Sec.21-30S-33W  
Haskell County, Kansas

Dear Katherine McClurkan:

"Your temporary abandonment (TA) application for the well listed above has been approved. In accordance with K.A.R. 82-3-111 the TA status of this well will expire 07/25/2025.

- \* If you return this well to service or plug it, please notify the District Office.
- \* If you sell this well you are required to file a Transfer of Operator form, T-1.
- \* If the well will remain temporarily abandoned, you must submit a new TA application, CP-111, before 07/25/2025.

You may contact me at the number above if you have questions.

Very truly yours,

Michael Maier"