

KANSAS CORPORATION COMMISSION
OIL & GAS CONSERVATION DIVISION

TEMPORARY ABANDONMENT WELL APPLICATION

OPERATOR: License#
Name:
Address 1:
Address 2:
City: State: Zip:
Contact Person:
Phone:
Contact Person Email:
Field Contact Person:
Field Contact Person Phone:

API No. 15-
Spot Description:
Sec. Twp. S. R.
GPS Location: Lat: Long:
Datum: NAD27 NAD83 WGS84
County: Elevation:
Lease Name: Well #:
Well Type: Oil Gas OG WSW Other:
SWD Permit #: ENHR Permit #:
Gas Storage Permit #:
Spud Date: Date Shut-In:

Table with 7 columns: Conductor, Surface, Production, Intermediate, Liner, Tubing. Rows include Size, Setting Depth, Amount of Cement, Top of Cement, Bottom of Cement.

Casing Fluid Level from Surface: How Determined? Date:
Casing Squeeze(s): to w / sacks of cement, to w / sacks of cement. Date:
Do you have a valid Oil & Gas Lease? Yes No
Depth and Type: Junk in Hole at Tools in Hole at Casing Leaks: Yes No Depth of casing leak(s):
Type Completion: ALT. I ALT. II Depth of: DV Tool: w / sacks of cement Port Collar: w / sack of cement
Packer Type: Size: Inch Set at: Feet
Total Depth: Plug Back Depth: Plug Back Method:

Geological Data:

Table with 4 columns: Formation Name, Formation Top, Formation Base, Completion Information. Rows 1 and 2.

UNDER PENALTY OF PERJURY I HEREBY ATTEST THAT THE INFORMATION CONTAINED HEREIN IS TRUE AND CORRECT TO THE BEST OF MY KNOWLEDGE

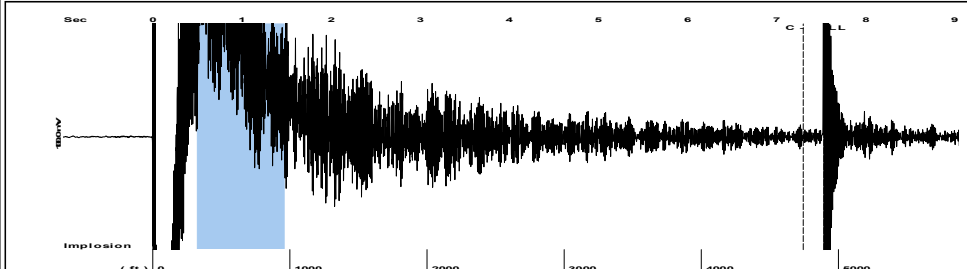
Submitted Electronically

Do NOT Write in This Space - KCC USE ONLY
Date Tested: Results: Date Plugged: Date Repaired: Date Put Back in Service:
Review Completed by: Comments:
TA Approved: Yes Denied Date:

Mail to the Appropriate KCC Conservation Office:

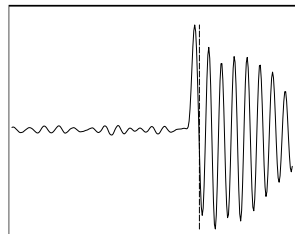
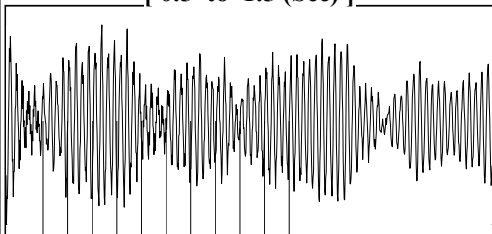
Table with 3 columns: District Office, Address, Phone. Rows for District Office #1, #2, #3, #4.

Group: MyWells Well: Koblitz 3409 28-2H (acquired on: 07/17/24 17:05:53)



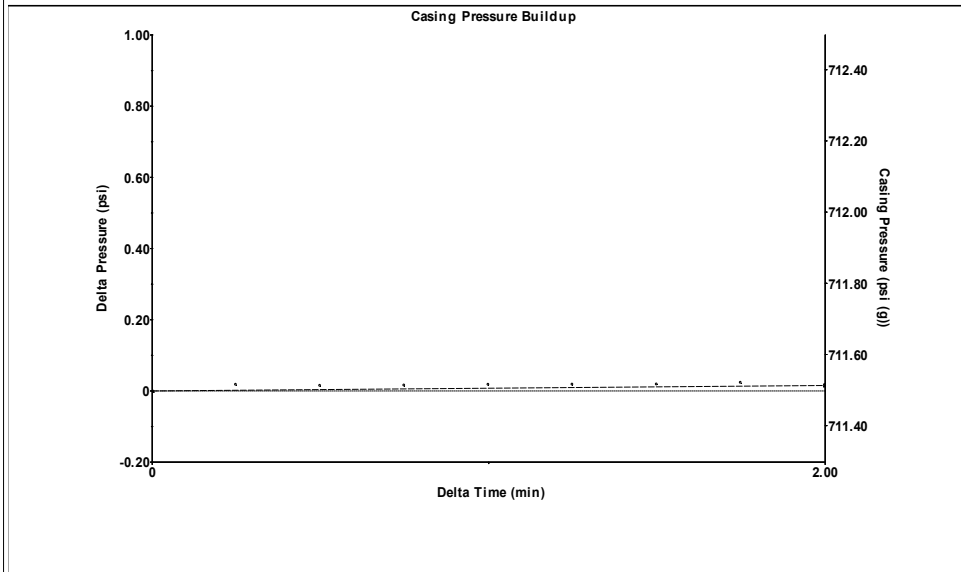
Filter Type High Pass Automatic Collar Count Yes Time 7.53 sec
 Manual Acoustic Veloc 1252.96 ft/s Manual JTS/sec 19.7628 Joints 154.374 Jts
 Depth 4893.64 ft

[0.5 to 1.5 (Sec)]



Analysis Method: Automatic

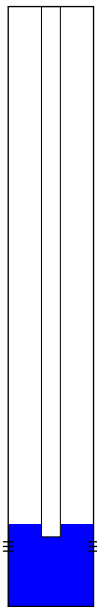
Group: MyWells Well: Koblitz 3409 28-2H (acquired on: 07/17/24 17:05:53)



Change in Pressure 0.02 psi PT 9563
 Change in Time 2.00 min Range 0 - ? psi

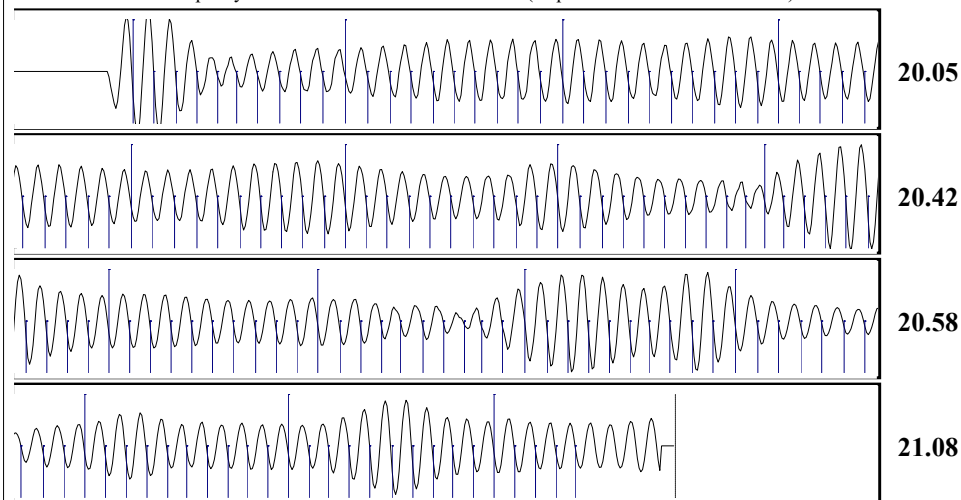
Group: MyWells Well: Koblitz 3409 28-2H (acquired on: 07/17/24 17:05:53)

Production		Potential	Casing Pressure
Oil	- * -	- * - BBL/D	711.5 psi (g)
Water	- * -	- * - BBL/D	Casing Pressure Buildup
Gas	- * -	- * - Mscf/D	0.0 psi
IPR Method		Vogel	2.00 min
PBHP/SBHP		- * -	Gas/Liquid Interface Pressure
Production Efficiency		0.0	802.6 psi (g)
Oil 40 deg.API		Liquid Level Depth	4893.64 ft
Water 1.05 Sp.Gr.H2O		Tubing Intake Depth	5050.00 ft
Gas 0.65 Sp.Gr.AIR		Formation Depth	5150.00 ft
Acoustic Velocity	1299.77 ft/s		



Static
 Oil Column Height MD 0 ft
 Water Column Height MD 240 ft
 Static BHP 911.8 psi (g)

Group: MyWells Well: Koblitz 3409 28-2H (acquired on: 07/17/24 17:05:53)



Acoustic Velocity	1299.77 ft/s	Joints counted	144
Joints Per Second	20.5011 jts/sec	Joints to liquid level	154.374
Depth to liquid level	4893.64 ft	Filter Width	17.7628 21.7628
Automatic Collar Count	Yes	Time to 1st Collar	0.276 7.3

Conservation Division
District Office No. 2
3450 N. Rock Road
Building 600, Suite 601
Wichita, KS 67226



Phone: 316-337-7400
<http://kcc.ks.gov/>

Andrew J. French, Chairperson
Dwight D. Keen, Commissioner
Annie Kuether, Commissioner

Laura Kelly, Governor

07/26/2024

Amanda Lair
BCE-Mach LLC
14201 WIRELESS WAY, SUITE 300
OKLAHOMA CITY, OK 73134-2521

Re: Temporary Abandonment
API 15-077-22125-01-00
KOBLOITZ 3409 28-2H
NW/4 Sec.28-34S-09W
Harper County, Kansas

Dear Amanda Lair:

"Your temporary abandonment (TA) application for the well listed above has been approved. In accordance with K.A.R. 82-3-111 the TA status of this well will expire 07/21/2025.

- * If you return this well to service or plug it, please notify the District Office.
- * If you sell this well you are required to file a Transfer of Operator form, T-1.
- * If the well will remain temporarily abandoned, you must submit a new TA application, CP-111, before 07/21/2025.

You may contact me at the number above if you have questions.

Very truly yours,

Neil Lake, ECRS"