

KANSAS CORPORATION COMMISSION
OIL & GAS CONSERVATION DIVISION

TEMPORARY ABANDONMENT WELL APPLICATION

OPERATOR: License#
Name:
Address 1:
Address 2:
City: State: Zip:
Contact Person:
Phone:
Contact Person Email:
Field Contact Person:
Field Contact Person Phone:

API No. 15-
Spot Description:
Sec. Twp. S. R.
GPS Location: Lat: Long:
Datum: NAD27 NAD83 WGS84
County: Elevation:
Lease Name: Well #:
Well Type: Oil Gas OG WSW Other:
SWD Permit #: ENHR Permit #:
Gas Storage Permit #:
Spud Date: Date Shut-In:

Table with 7 columns: Conductor, Surface, Production, Intermediate, Liner, Tubing. Rows include Size, Setting Depth, Amount of Cement, Top of Cement, Bottom of Cement.

Casing Fluid Level from Surface: How Determined? Date:
Casing Squeeze(s): to w / sacks of cement, to w / sacks of cement. Date:
Do you have a valid Oil & Gas Lease? Yes No
Depth and Type: Junk in Hole at Tools in Hole at Casing Leaks: Yes No Depth of casing leak(s):
Type Completion: ALT. I ALT. II Depth of: DV Tool: w / sacks of cement Port Collar: w / sack of cement
Packer Type: Size: Inch Set at: Feet
Total Depth: Plug Back Depth: Plug Back Method:

Geological Data:

Table with 4 columns: Formation Name, Formation Top, Formation Base, Completion Information. Rows 1 and 2.

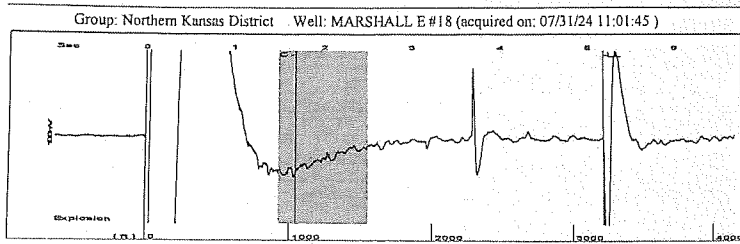
UNDER PENALTY OF PERJURY I HEREBY ATTEST THAT THE INFORMATION CONTAINED HEREIN IS TRUE AND CORRECT TO THE BEST OF MY KNOWLEDGE

Submitted Electronically

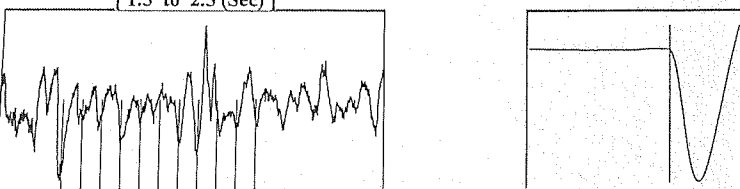
Do NOT Write in This Space - KCC USE ONLY
Date Tested: Results: Date Plugged: Date Repaired: Date Put Back in Service:
Review Completed by: Comments:
TA Approved: Yes Denied Date:

Mail to the Appropriate KCC Conservation Office:

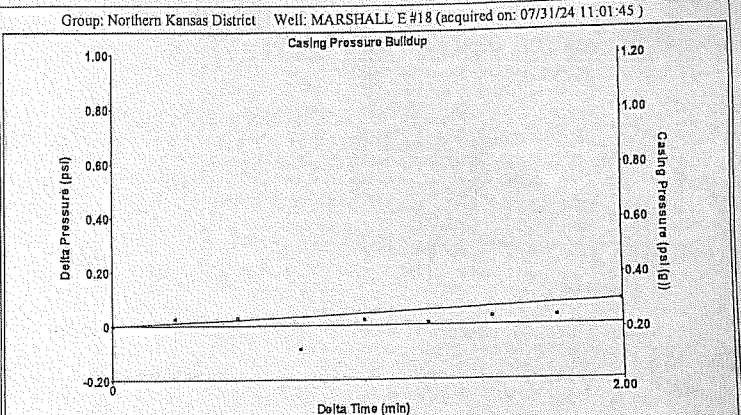
Map of Kansas with 4 numbered districts and corresponding office addresses and phone numbers.



Filter Type High Pass Automatic Collar Count Yes Time 5.179 sec  
 Manual Acoustic Velocity 1257.94 ft/s Manual JTS/sec 19.8413 Joints 101.549 Jts  
 Depth 3219.10 ft



Analysis Method: Automatic

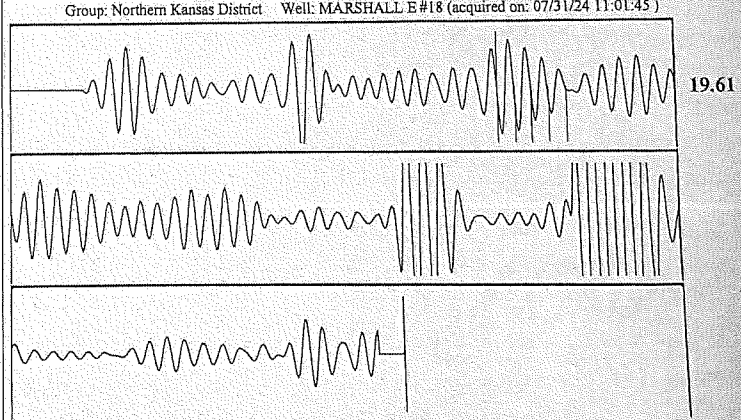


Change in Pressure 0.09 psi PT 8139  
 Change in Time 2.00 min Range 0 - ? psi

Group: Northern Kansas District Well: MARSHALL E #18 (acquired on: 07/31/24 11:01:45)

Production	Potential	Casing Pressure	Static
Current		0.2 psi (g)	
Oil 1.66	- * - BBL/D	Casing Pressure Buildup	Oil Column Height
Water 2044	- * - BBL/D	0.1 psi	MD - * - ft
Gas - * -	- * - Mscf/D	2.00 min	
		Gas/Liquid Interface Pressure	Water Column Height
		1.5 psi (g)	MD - * - ft
IPR Method Vogel		Liquid Level Depth	
PBHP/SBHP - * -		3219.10 ft	
Production Efficiency 0.0		Pump Intake Depth	
		- * - ft	
Oil 29 deg.API		Formation Depth	
Water 1.04 Sp.Gr.H2O		3452.00 ft	
Gas 0.73 Sp.Gr.AIR			
Acoustic Velocity 1243.14 ft/s		Static BHP	
		106.4 psi (g)	

Acoustic Test



Acoustic Velocity 1243.14 ft/s Joints counted 4  
 Joints Per Second 19.6078 jts/sec Joints to liquid level 101.549  
 Depth to liquid level 3219.1 ft Filter Width 17.8413 21.8413  
 Automatic Collar Count Yes Time to 1st Collar 1.476 1.68

08/05/2024

Peter Fiorini  
Ritchie Exploration, Inc.  
8100 E 22ND ST N # 700  
PO BOX 783188  
WICHITA, KS 67278-3188

Re: Temporary Abandonment  
API 15-051-05203-00-00  
MARSHALL E 18  
SE/4 Sec.24-11S-18W  
Ellis County, Kansas

Dear Peter Fiorini:

"Your temporary abandonment (TA) application for the well listed above has been approved. In accordance with K.A.R. 82-3-111 the TA status of this well will expire 08/05/2025.

- \* If you return this well to service or plug it, please notify the District Office.
- \* If you sell this well you are required to file a Transfer of Operator form, T-1.
- \* If the well will remain temporarily abandoned, you must submit a new TA application, CP-111, before 08/05/2025.

You may contact me at the number above if you have questions.

Very truly yours,

RICHARD WILLIAMS"