

KANSAS CORPORATION COMMISSION
OIL & GAS CONSERVATION DIVISION

TEMPORARY ABANDONMENT WELL APPLICATION

OPERATOR: License#
Name:
Address 1:
Address 2:
City: State: Zip:
Contact Person:
Phone:
Contact Person Email:
Field Contact Person:
Field Contact Person Phone:

API No. 15-
Spot Description:
Sec. Twp. S. R.
GPS Location: Lat: Long:
Datum: NAD27 NAD83 WGS84
County: Elevation:
Lease Name: Well #:
Well Type: Oil Gas OG WSW Other:
SWD Permit #: ENHR Permit #:
Gas Storage Permit #:
Spud Date: Date Shut-In:

Table with 7 columns: Conductor, Surface, Production, Intermediate, Liner, Tubing. Rows include Size, Setting Depth, Amount of Cement, Top of Cement, Bottom of Cement.

Casing Fluid Level from Surface: How Determined? Date:
Casing Squeeze(s): to w / sacks of cement, to w / sacks of cement. Date:
Do you have a valid Oil & Gas Lease? Yes No
Depth and Type: Junk in Hole at Tools in Hole at Casing Leaks: Yes No Depth of casing leak(s):
Type Completion: ALT. I ALT. II Depth of: DV Tool: w / sacks of cement Port Collar: w / sack of cement
Packer Type: Size: Inch Set at: Feet
Total Depth: Plug Back Depth: Plug Back Method:

Geological Data:

Table with 4 columns: Formation Name, Formation Top, Formation Base, Completion Information. Rows 1 and 2.

UNDER PENALTY OF PERJURY I HEREBY ATTEST THAT THE INFORMATION CONTAINED HEREIN IS TRUE AND CORRECT TO THE BEST OF MY KNOWLEDGE

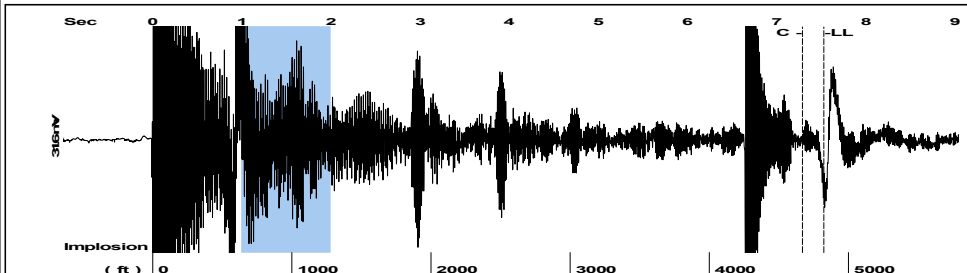
Submitted Electronically

Do NOT Write in This Space - KCC USE ONLY
Date Tested: Results: Date Plugged: Date Repaired: Date Put Back in Service:
Review Completed by: Comments:
TA Approved: Yes Denied Date:

Mail to the Appropriate KCC Conservation Office:

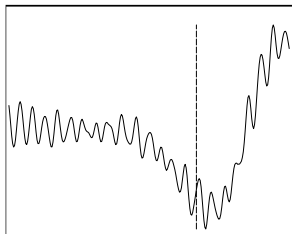
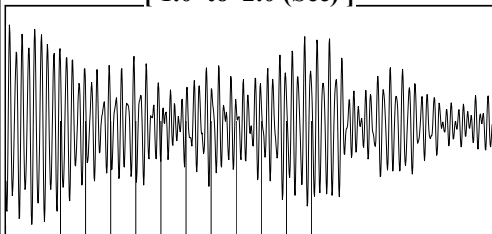
Table with 2 columns: Office Address, Phone. Rows for District Office #1, #2, #3, #4.

Group: MyWells Well: Cartmill 9-34-7 1H (acquired on: 07/18/24 15:59:50)



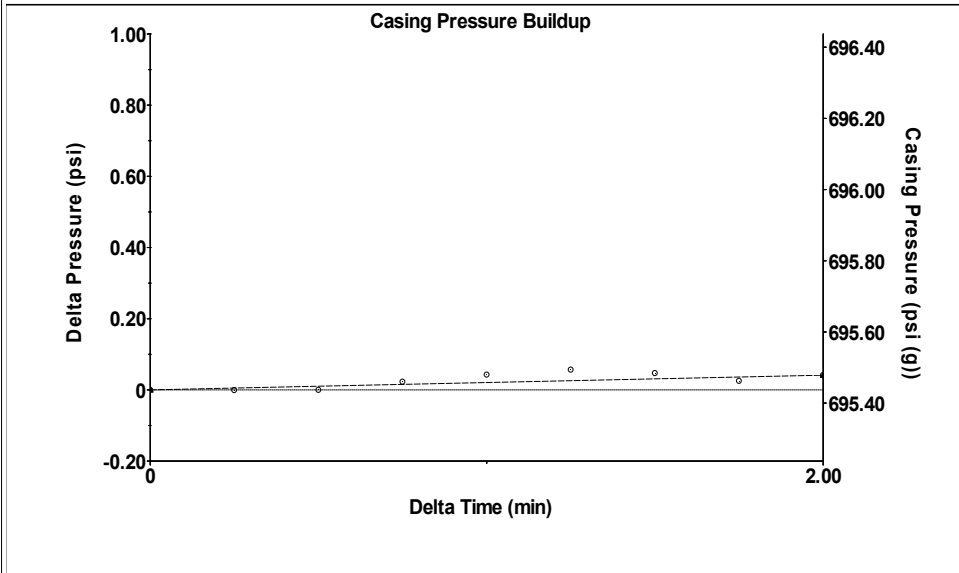
Filter Type High Pass Automatic Collar Count Yes Time 7.528 sec
 Manual Acoustic Veloc 1228.68 ft/s Manual JTS/sec 19.3798 Joints 152.141 Jts
 Depth 4822.88 ft

[1.0 to 2.0 (Sec)]



Analysis Method: Automatic

Group: MyWells Well: Cartmill 9-34-7 1H (acquired on: 07/18/24 15:59:50)



Change in Pressure 0.04 psi PT 9563
 Change in Time 2.00 min Range 0 - ? psi

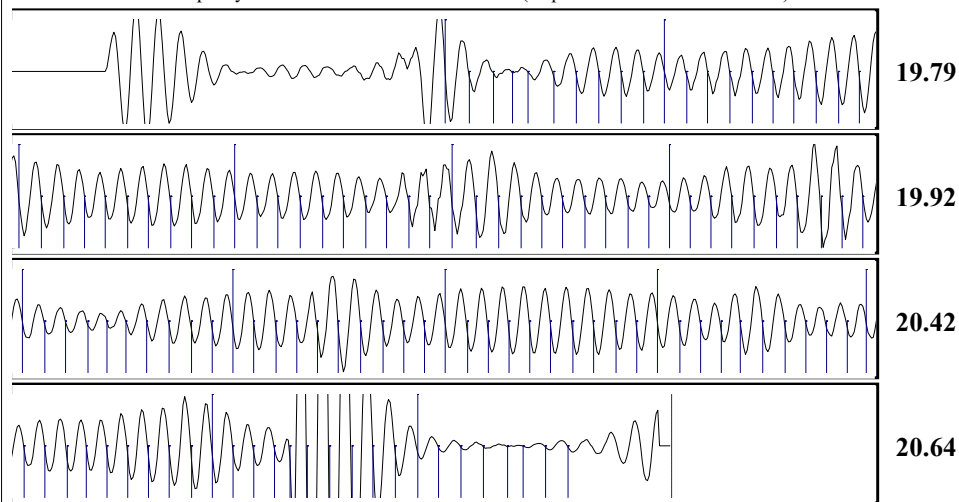
Group: MyWells Well: Cartmill 9-34-7 1H (acquired on: 07/18/24 15:59:50)

Production Current	Potential	Casing Pressure	Static
Oil - *-	- *- BBL/D	695.4 psi (g)	
Water - *-	- *- BBL/D	Casing Pressure Buildup	Oil Column Height
Gas - *-	- *- Mscf/D	0.0 psi	MD 0 ft
		2.00 min	
IPR Method	Vogel	Gas/Liquid Interface Pressure	Water Column Height
PBHP/SBHP	- *-	785.3 psi (g)	MD 311 ft
Production Efficiency	0.0		
		Liquid Level Depth	
Oil 40 deg.API		4822.88 ft	
Water 1.05 Sp.Gr.H2O		Tubing Intake Depth	
Gas 0.66 Sp.Gr.AIR		5050.00 ft	
Acoustic Velocity	1281.32 ft/s	Formation Depth	
		5150.00 ft	

Acoustic Test This Well is TA'ed

Static BHP
926.7 psi (g)

Group: MyWells Well: Cartmill 9-34-7 1H (acquired on: 07/18/24 15:59:50)



Acoustic Velocity	1281.32 ft/s	Joints counted	127
Joints Per Second	20.2101 jts/sec	Joints to liquid level	152.141
Depth to liquid level	4822.88 ft	Filter Width	17.3798 21.3798
Automatic Collar Count	Yes	Time to 1st Collar	1.004 7.288

Conservation Division
District Office No. 2
3450 N. Rock Road
Building 600, Suite 601
Wichita, KS 67226



Phone: 316-337-7400
<http://kcc.ks.gov/>

Andrew J. French, Chairperson
Dwight D. Keen, Commissioner
Annie Kuether, Commissioner

Laura Kelly, Governor

08/05/2024

Amanda Lair
BCE-Mach LLC
14201 WIRELESS WAY, SUITE 300
OKLAHOMA CITY, OK 73134-2521

Re: Temporary Abandonment
API 15-077-22144-01-00
CARTMILL 9-34-7 1H
NE/4 Sec.16-34S-07W
Harper County, Kansas

Dear Amanda Lair:

"Your temporary abandonment (TA) application for the well listed above has been approved. In accordance with K.A.R. 82-3-111 the TA status of this well will expire 07/21/2025.

- * If you return this well to service or plug it, please notify the District Office.
- * If you sell this well you are required to file a Transfer of Operator form, T-1.
- * If the well will remain temporarily abandoned, you must submit a new TA application, CP-111, before 07/21/2025.

You may contact me at the number above if you have questions.

Very truly yours,

Neil Lake, ECRS"