

KANSAS CORPORATION COMMISSION
OIL & GAS CONSERVATION DIVISION

TEMPORARY ABANDONMENT WELL APPLICATION

OPERATOR: License#
Name:
Address 1:
Address 2:
City: State: Zip:
Contact Person:
Phone:
Contact Person Email:
Field Contact Person:
Field Contact Person Phone:

API No. 15-
Spot Description:
Sec. Twp. S. R.
GPS Location: Lat: Long:
Datum: NAD27 NAD83 WGS84
County: Elevation:
Lease Name: Well #:
Well Type: Oil Gas OG WSW Other:
SWD Permit #: ENHR Permit #:
Gas Storage Permit #:
Spud Date: Date Shut-In:

Table with 7 columns: Conductor, Surface, Production, Intermediate, Liner, Tubing. Rows include Size, Setting Depth, Amount of Cement, Top of Cement, Bottom of Cement.

Casing Fluid Level from Surface: How Determined? Date:
Casing Squeeze(s): to w / sacks of cement, to w / sacks of cement. Date:
Do you have a valid Oil & Gas Lease? Yes No
Depth and Type: Junk in Hole at Tools in Hole at Casing Leaks: Yes No Depth of casing leak(s):
Type Completion: ALT. I ALT. II Depth of: DV Tool: w / sacks of cement Port Collar: w / sack of cement
Packer Type: Size: Inch Set at: Feet
Total Depth: Plug Back Depth: Plug Back Method:

Geological Data:

Table with 4 columns: Formation Name, Formation Top, Formation Base, Completion Information. Rows 1 and 2.

UNDER PENALTY OF PERJURY I HEREBY ATTEST THAT THE INFORMATION CONTAINED HEREIN IS TRUE AND CORRECT TO THE BEST OF MY KNOWLEDGE

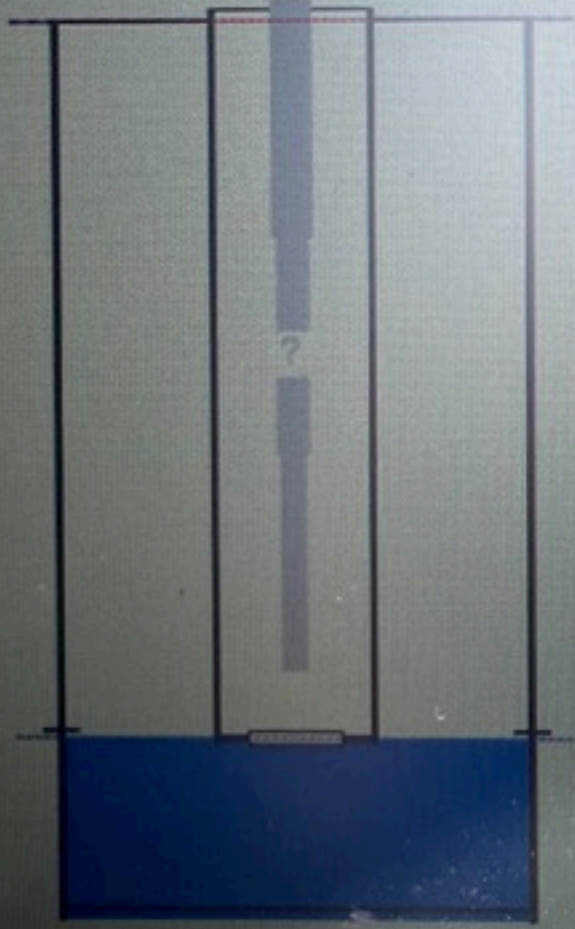
Submitted Electronically

Do NOT Write in This Space - KCC USE ONLY
Date Tested: Results: Date Plugged: Date Repaired: Date Put Back in Service:
Review Completed by: Comments:
TA Approved: Yes Denied Date:

Mail to the Appropriate KCC Conservation Office:

Table with 3 columns: District Office #, Address, Phone. Rows 1-4.

Producing Shot  
Manual Input

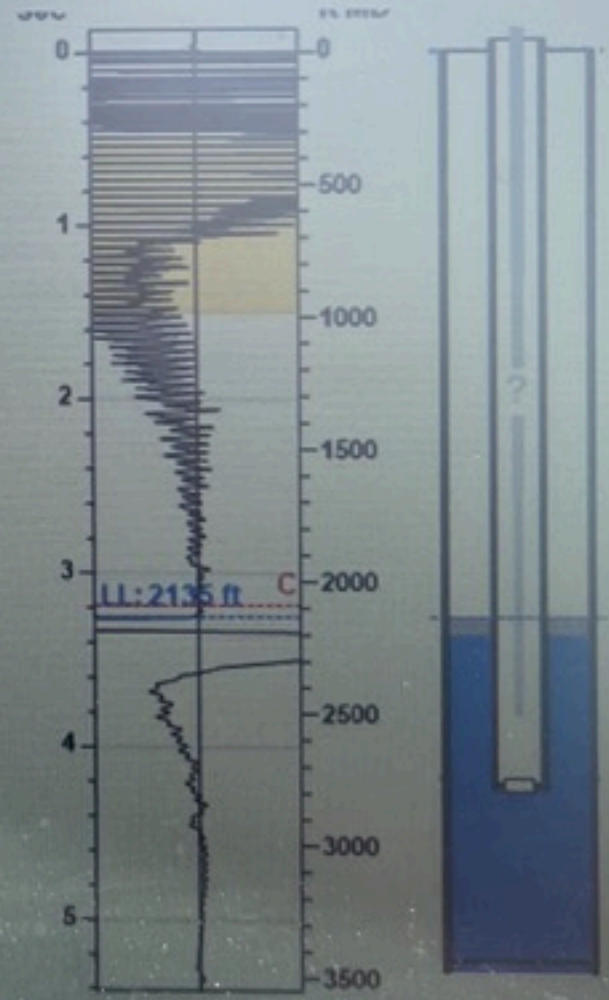
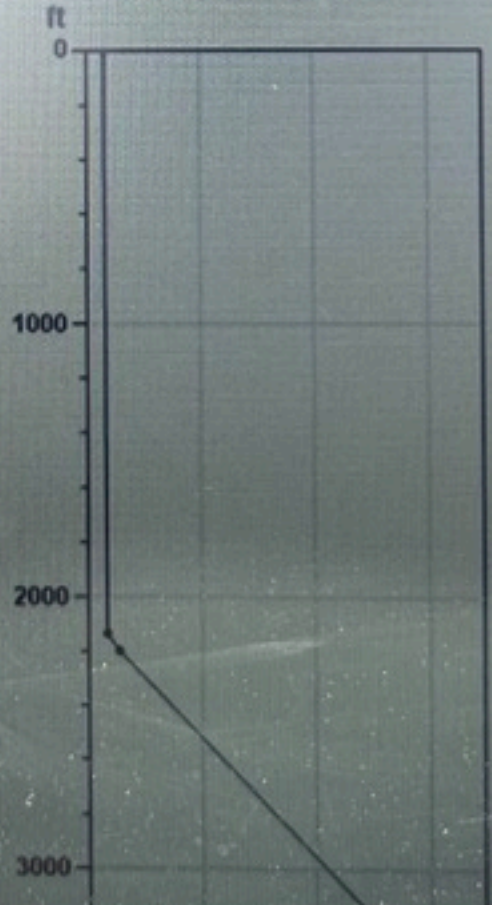


Static Bottomhole Pressure  
309.5 psi (g) @ 2760 ft TVD

Static Liquid Level 2135 ft MD  
Oil Column Height 63 ft MD  
Water Column Height 562 ft MD

Static Shot  
08/01/2024 02:45:42PM

Pressure Profile (TVD)



Manually Entered Production

Liquid Level 2765 ft

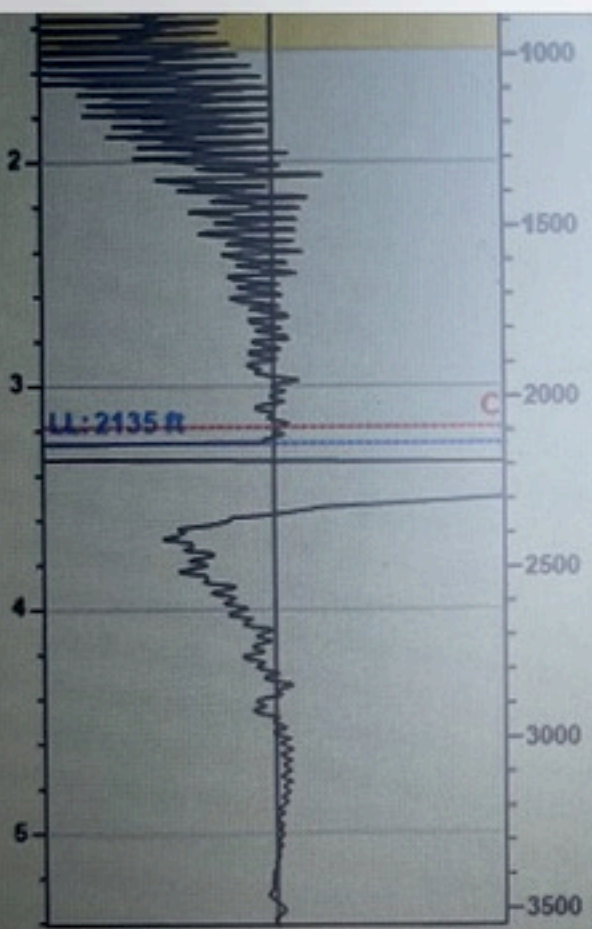
Casing Pressure Buildup



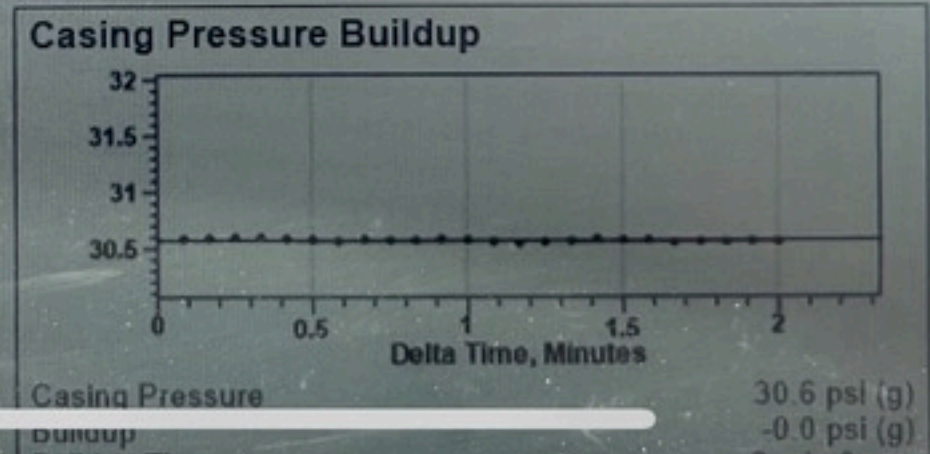
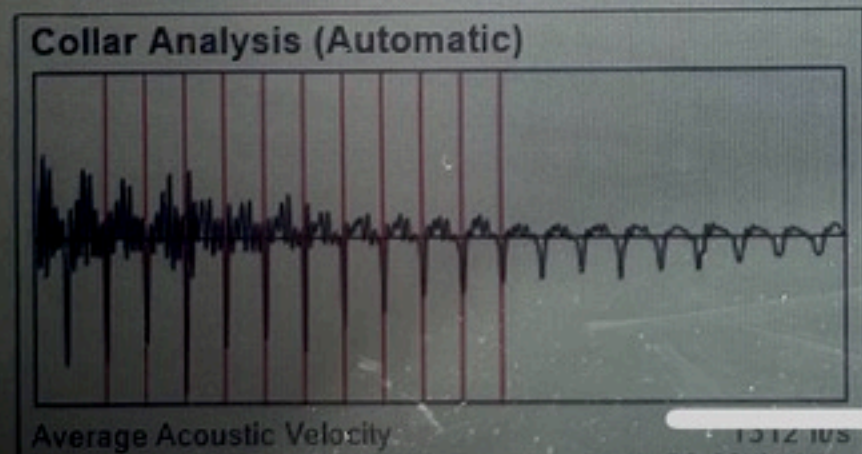
Photo



Done



Pressure	30.6 psi (g)
<b>Annular Gas Flow</b>	
Gas Flow	0.0 Mscf/D
<b>Fluid Properties</b>	
% Liquid Above Pump	100.00%
% Liquid Below Pump	<a href="#">Modify...</a>
<b>Depths</b>	
Pump Intake Depth	2765 ft
Formation Depth	2760 ft
<b>Wellbore Pressures</b>	
PIP	245.1 psi (g)
PBHP	243.4 psi (g)
SBHP	**
Gas/Liq Interface	32.9 psi (g)



Photo



Done



Conservation Division  
District Office No. 1  
210 E. Frontview, Suite A  
Dodge City, KS 67801



Phone: 620-682-7933  
<http://kcc.ks.gov/>

Andrew J. French, Chairperson  
Dwight D. Keen, Commissioner  
Annie Kuether, Commissioner

Laura Kelly, Governor

08/06/2024

Teresa Fox  
Rupe Oil Company, Inc.  
PO BOX 783010  
WICHITA, KS 67278-3010

Re: Temporary Abandonment  
API 15-151-20535-00-00  
BLACKWELDER 1  
SW/4 Sec.32-29S-11W  
Pratt County, Kansas

Dear Teresa Fox:

"Your temporary abandonment (TA) application for the well listed above has been approved. In accordance with K.A.R. 82-3-111 the TA status of this well will expire 08/06/2025.

- \* If you return this well to service or plug it, please notify the District Office.
- \* If you sell this well you are required to file a Transfer of Operator form, T-1.
- \* If the well will remain temporarily abandoned, you must submit a new TA application, CP-111, before 08/06/2025.

You may contact me at the number above if you have questions.

Very truly yours,

Michael Maier"