

KANSAS CORPORATION COMMISSION
OIL & GAS CONSERVATION DIVISION

TEMPORARY ABANDONMENT WELL APPLICATION

OPERATOR: License#
Name:
Address 1:
Address 2:
City: State: Zip:
Contact Person:
Phone:
Contact Person Email:
Field Contact Person:
Field Contact Person Phone:

API No. 15-
Spot Description:
Sec. Twp. S. R.
GPS Location: Lat: Long:
Datum: NAD27 NAD83 WGS84
County: Elevation:
Lease Name: Well #:
Well Type: Oil Gas OG WSW Other:
SWD Permit #: ENHR Permit #:
Gas Storage Permit #:
Spud Date: Date Shut-In:

Table with 7 columns: Conductor, Surface, Production, Intermediate, Liner, Tubing. Rows include Size, Setting Depth, Amount of Cement, Top of Cement, Bottom of Cement.

Casing Fluid Level from Surface: How Determined? Date:
Casing Squeeze(s): to w / sacks of cement, to w / sacks of cement. Date:
Do you have a valid Oil & Gas Lease? Yes No
Depth and Type: Junk in Hole at Tools in Hole at Casing Leaks: Yes No Depth of casing leak(s):
Type Completion: ALT. I ALT. II Depth of: DV Tool: w / sacks of cement Port Collar: w / sack of cement
Packer Type: Size: Inch Set at: Feet
Total Depth: Plug Back Depth: Plug Back Method:

Geological Data:

Table with 4 columns: Formation Name, Formation Top, Formation Base, Completion Information. Rows 1 and 2.

UNDER PENALTY OF PERJURY I HEREBY ATTEST THAT THE INFORMATION CONTAINED HEREIN IS TRUE AND CORRECT TO THE BEST OF MY KNOWLEDGE

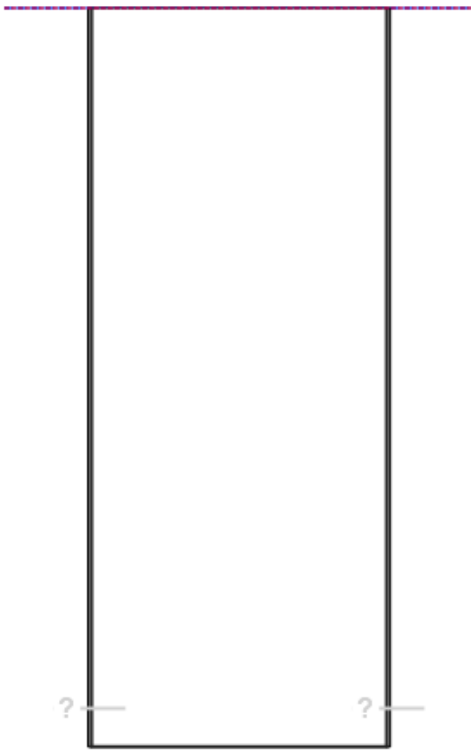
Submitted Electronically

Do NOT Write in This Space - KCC USE ONLY
Date Tested: Results: Date Plugged: Date Repaired: Date Put Back in Service:
Review Completed by: Comments:
TA Approved: Yes Denied Date:

Mail to the Appropriate KCC Conservation Office:

Table with 3 columns: District Office #, Address, Phone. Rows 1-4.

**Producing Shot  
Manual Input**



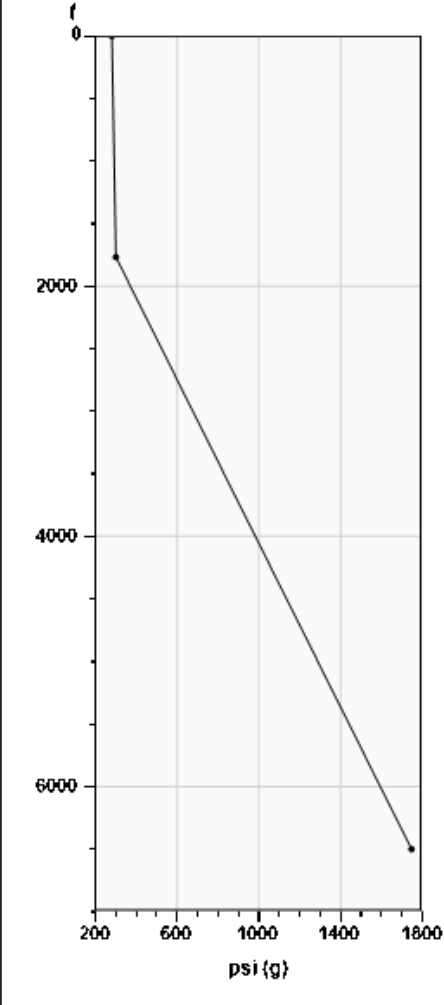
**Manually Entered Production**

Liquid Level 0 ft  
Percent Liquid 100.00%

**Static Bottomhole Pressure  
281.3 psi (g) @ 0 ft TVD**

Static Liquid Level 1767 ft MD  
Oil Column Height -1767 ft MD  
Water Column Height 0 ft MD

**Pressure Profile (TVD)**



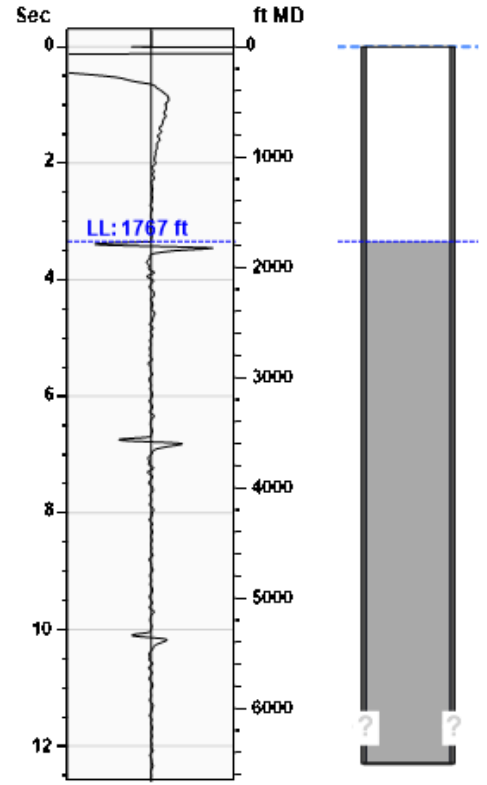
**Well Test**

Oil 0 BBL/D  
Water 0 BBL/D

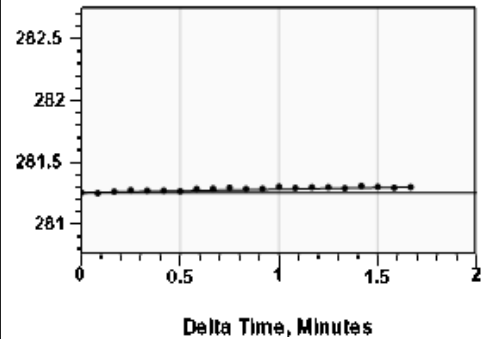
**Comments and Recommendations**

Well: Adams 2-4  
Operator: Quinque Operating Company  
County: Meade  
API #: 15-119-20402

**Static Shot  
07/19/2024 01:24:26PM**



**Casing Pressure Buildup**



Casing Pressure 281.3 psi (g)  
Buildup 0.0 psi (g)  
Buildup Time 1 min 40 sec  
Gas Gravity 0.9220 Air = 1

**Casing Pressure**

Pressure 281.3 psi (g)

**Annular Gas Flow**

Gas Flow 0.4 Mscf/D

Conservation Division  
District Office No. 1  
210 E. Frontview, Suite A  
Dodge City, KS 67801



Phone: 620-682-7933  
<http://kcc.ks.gov/>

Andrew J. French, Chairperson  
Dwight D. Keen, Commissioner  
Annie Kuether, Commissioner

Laura Kelly, Governor

08/08/2024

Catherine Smith  
Quinque Operating Company  
908 NW 71ST ST  
OKLAHOMA CITY, OK 73116-7402

Re: Temporary Abandonment  
API 15-119-20402-00-00  
ADAMS 2-4  
SE/4 Sec.04-35S-30W  
Meade County, Kansas

Dear Catherine Smith:

"Your temporary abandonment (TA) application for the well listed above has been approved. In accordance with K.A.R. 82-3-111 the TA status of this well will expire 08/08/2025.

- \* If you return this well to service or plug it, please notify the District Office.
- \* If you sell this well you are required to file a Transfer of Operator form, T-1.
- \* If the well will remain temporarily abandoned, you must submit a new TA application, CP-111, before 08/08/2025.

You may contact me at the number above if you have questions.

Very truly yours,

Michael Maier"