

KANSAS CORPORATION COMMISSION
OIL & GAS CONSERVATION DIVISION

TEMPORARY ABANDONMENT WELL APPLICATION

OPERATOR: License#
Name:
Address 1:
Address 2:
City: State: Zip:
Contact Person:
Phone:
Contact Person Email:
Field Contact Person:
Field Contact Person Phone:

API No. 15-
Spot Description:
Sec. Twp. S. R.
GPS Location: Lat: Long:
Datum: NAD27 NAD83 WGS84
County: Elevation:
Lease Name: Well #:
Well Type: Oil Gas OG WSW Other:
SWD Permit #: ENHR Permit #:
Gas Storage Permit #:
Spud Date: Date Shut-In:

Table with 7 columns: Conductor, Surface, Production, Intermediate, Liner, Tubing. Rows include Size, Setting Depth, Amount of Cement, Top of Cement, Bottom of Cement.

Casing Fluid Level from Surface: How Determined? Date:
Casing Squeeze(s): to w / sacks of cement, to w / sacks of cement. Date:
Do you have a valid Oil & Gas Lease? Yes No
Depth and Type: Junk in Hole at Tools in Hole at Casing Leaks: Yes No Depth of casing leak(s):
Type Completion: ALT. I ALT. II Depth of: DV Tool: w / sacks of cement Port Collar: w / sack of cement
Packer Type: Size: Inch Set at: Feet
Total Depth: Plug Back Depth: Plug Back Method:

Geological Data:

Table with 4 columns: Formation Name, Formation Top, Formation Base, Completion Information. Rows 1 and 2.

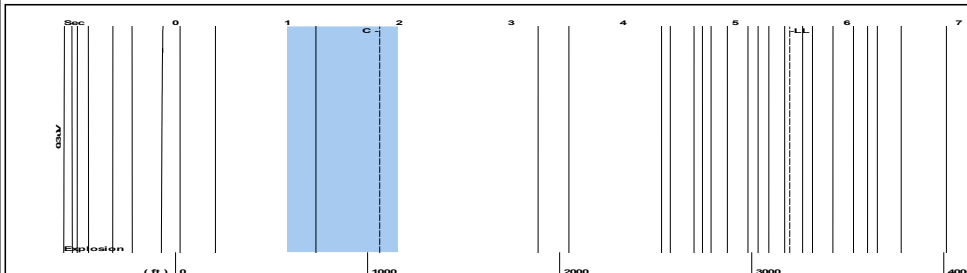
UNDER PENALTY OF PERJURY I HEREBY ATTEST THAT THE INFORMATION CONTAINED HEREIN IS TRUE AND CORRECT TO THE BEST OF MY KNOWLEDGE

Submitted Electronically

Do NOT Write in This Space - KCC USE ONLY
Date Tested: Results: Date Plugged: Date Repaired: Date Put Back in Service:
Review Completed by: Comments:
TA Approved: Yes Denied Date:

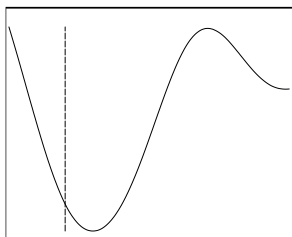
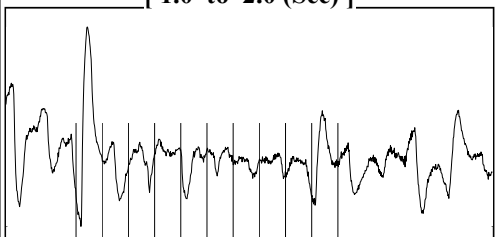
Mail to the Appropriate KCC Conservation Office:

Table with 3 columns: District Office, Address, Phone. Rows for District Office #1, #2, #3, #4.

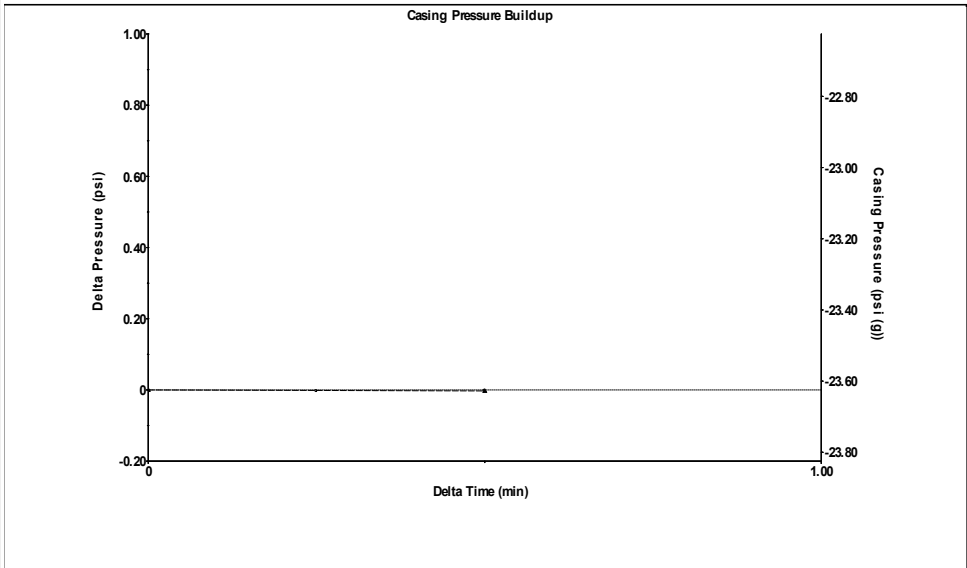


Filter Type High Pass Automatic Collar Count Yes Time 5.488 sec
 Manual Acoustic Veloc 1178.44 ft/s Manual JTS/sec 18.5874 Joints 100.882 Jts
 Depth 3197.97 ft

[1.0 to 2.0 (Sec)]

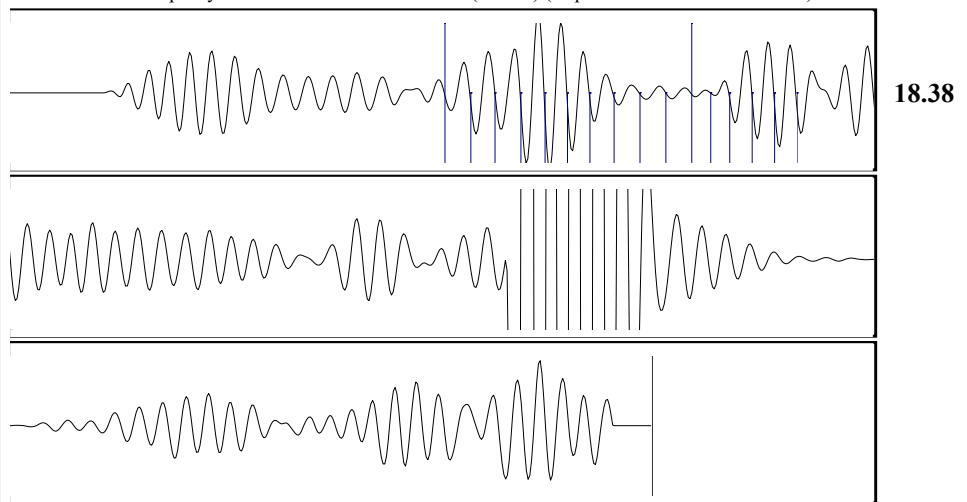


Analysis Method: Automatic



Change in Pressure -0.00 psi PT13682
 Change in Time 0.50 min Range 0 - ? psi

Production		Potential		Casing Pressure		Producing	
Oil	- * -	- * -	BBL/D	-14.7	psi (g)	Annular	
Water	- * -	- * -	BBL/D	-0.003	psi	Gas Flow	- * - Mscf/D
Gas	- * -	- * -	Mscf/D	0.50	min	% Liquid	100 %
IPR Method		Vogel		Gas/Liquid Interface Pressure			
PBHP/SBHP		- * -		- * -	psi (g)		
Production Efficiency		0.0		Liquid Level Depth			
Oil	40 deg.API			3197.97	ft		
Water	1.05 Sp.Gr.H2O			Pump Intake Depth			
Gas	0.70 Sp.Gr.AIR			- * -	ft		
Acoustic Velocity	1165.44 ft/s			Formation Depth			
				4934.00	ft		
Formation Submergence							
Total Gaseous Liquid Column HT (TVD)				- * -	ft		
Equivalent Gas Free Liquid HT (TVD)				- * -	ft		
Acoustic Test							



18.38

Acoustic Velocity 1165.44 ft/s Joints counted 15
 Joints Per Second 18.3824 jts/sec Joints to liquid level 100.882
 Depth to liquid level 3197.97 ft Filter Width 16.5874 20.5874
 Automatic Collar Count Yes Time to 1st Collar 1.008 1.824

Conservation Division
District Office No. 1
210 E. Frontview, Suite A
Dodge City, KS 67801



Phone: 620-682-7933
<http://kcc.ks.gov/>

Andrew J. French, Chairperson
Dwight D. Keen, Commissioner
Annie Kuether, Commissioner

Laura Kelly, Governor

08/12/2024

Octavi Morales
American Warrior, Inc.
PO BOX 399
GARDEN CITY, KS 67846-0399

Re: Temporary Abandonment
API 15-069-20309-00-00
O'BRATE 2-5 (GRAY)
SE/4 Sec.05-24S-29W
Gray County, Kansas

Dear Octavi Morales:

"Your temporary abandonment (TA) application for the well listed above has been approved. In accordance with K.A.R. 82-3-111 the TA status of this well will expire 08/12/2025.

- * If you return this well to service or plug it, please notify the District Office.
- * If you sell this well you are required to file a Transfer of Operator form, T-1.
- * If the well will remain temporarily abandoned, you must submit a new TA application, CP-111, before 08/12/2025.

You may contact me at the number above if you have questions.

Very truly yours,

Michael Maier"