

KANSAS CORPORATION COMMISSION
OIL & GAS CONSERVATION DIVISION

TEMPORARY ABANDONMENT WELL APPLICATION

OPERATOR: License#
Name:
Address 1:
Address 2:
City: State: Zip:
Contact Person:
Phone:
Contact Person Email:
Field Contact Person:
Field Contact Person Phone:

API No. 15-
Spot Description:
Sec. Twp. S. R.
GPS Location: Lat: Long:
Datum: NAD27 NAD83 WGS84
County: Elevation:
Lease Name: Well #:
Well Type: Oil Gas OG WSW Other:
SWD Permit #: ENHR Permit #:
Gas Storage Permit #:
Spud Date: Date Shut-In:

Table with 7 columns: Conductor, Surface, Production, Intermediate, Liner, Tubing. Rows include Size, Setting Depth, Amount of Cement, Top of Cement, Bottom of Cement.

Casing Fluid Level from Surface: How Determined? Date:
Casing Squeeze(s): to w / sacks of cement, to w / sacks of cement. Date:
Do you have a valid Oil & Gas Lease? Yes No
Depth and Type: Junk in Hole at Tools in Hole at Casing Leaks: Yes No Depth of casing leak(s):
Type Completion: ALT. I ALT. II Depth of: DV Tool: w / sacks of cement Port Collar: w / sack of cement
Packer Type: Size: Inch Set at: Feet
Total Depth: Plug Back Depth: Plug Back Method:

Geological Data:

Table with 4 columns: Formation Name, Formation Top, Formation Base, Completion Information. Rows 1 and 2.

UNDER PENALTY OF PERJURY I HEREBY ATTEST THAT THE INFORMATION CONTAINED HEREIN IS TRUE AND CORRECT TO THE BEST OF MY KNOWLEDGE

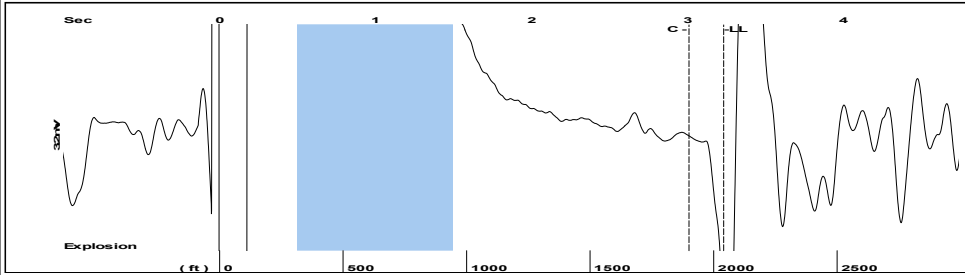
Submitted Electronically

Do NOT Write in This Space - KCC USE ONLY
Date Tested: Results: Date Plugged: Date Repaired: Date Put Back in Service:
Review Completed by: Comments:
TA Approved: Yes Denied Date:

Mail to the Appropriate KCC Conservation Office:

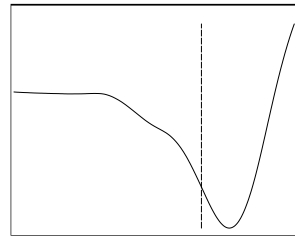
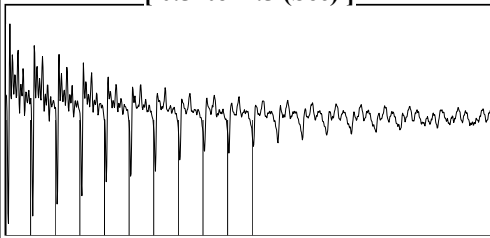
Table with 3 columns: District Office #, Address, Phone. Rows 1-4.

Group: MyWells Well: Charlie Brown 1-24 (acquired on: 08/13/24 13:45:36)



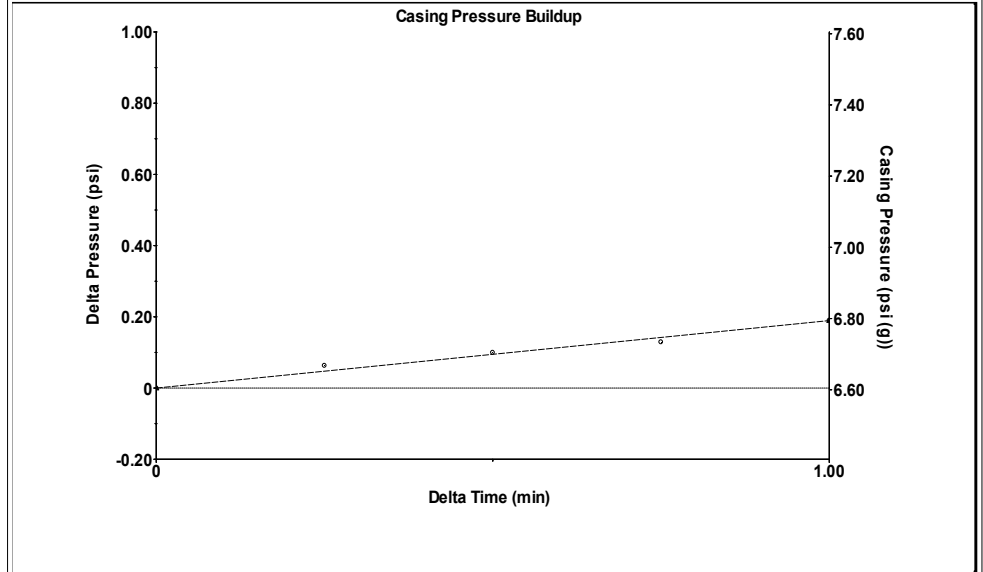
Filter Type High Pass Automatic Collar Count Yes Time 3.23 sec
 Manual Acoustic Veloc 1252.96 ft/s Manual JTS/sec 19.7628 Joints 64.3659 Jts
 Depth 2040.40 ft

[0.5 to 1.5 (Sec)]



Analysis Method: Automatic

Group: MyWells Well: Charlie Brown 1-24 (acquired on: 08/13/24 13:45:36)

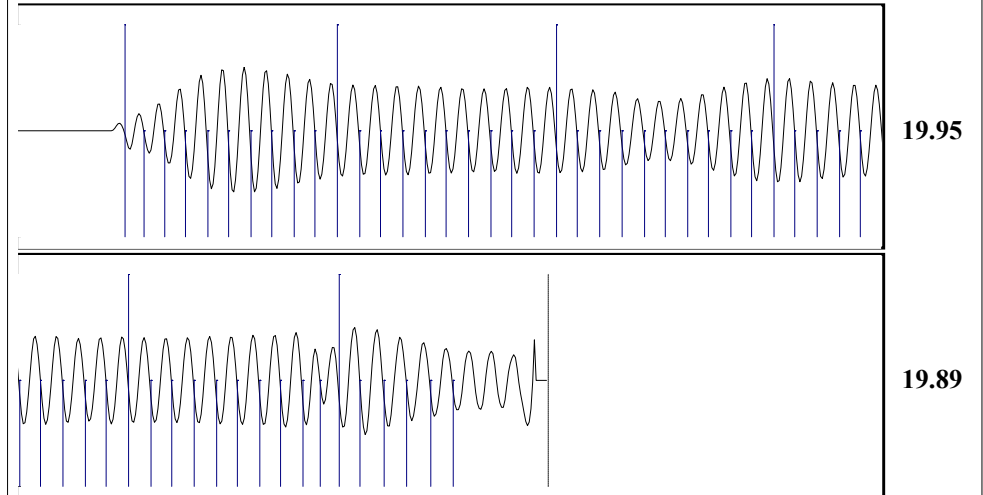


Change in Pressure 0.19 psi PT 8064
 Change in Time 1.00 min Range 0 - ? psi

Group: MyWells Well: Charlie Brown 1-24 (acquired on: 08/13/24 13:45:36)

Production		Potential		Casing Pressure		Static	
Oil	- * -	- * -	BBL/D	6.6	psi (g)	Oil Column Height	MD 0 ft
Water	- * -	- * -	BBL/D	0.2	psi	Casing Pressure Buildup	1.00 min
Gas	0.0	- * -	Mscf/D	7.7	psi (g)	Gas/Liquid Interface Pressure	7.7 psi (g)
IPR Method		Vogel		Liquid Level Depth		Water Column Height	
PBHP/SBHP	- * -	- * -		2040.40	ft	MD	2751 ft
Production Efficiency	0.0			Pump Intake Depth		Static BHP	
Oil	40 deg.API			- * -	ft	1258.3	psi (g)
Water	1.05 Sp.Gr.H2O			Formation Depth			
Gas	0.72 Sp.Gr.AIR			4803.00	ft		
Acoustic Velocity		1263.41 ft/s					
Acoustic Test							

Group: MyWells Well: Charlie Brown 1-24 (acquired on: 08/13/24 13:45:36)



Acoustic Velocity 1263.41 ft/s Joints counted 55
 Joints Per Second 19.9275 jts/sec Joints to liquid level 64.3659
 Depth to liquid level 2040.4 ft Filter Width 17.7628 21.7628
 Automatic Collar Count Yes Time to 1st Collar 0.248 3.008

Conservation Division
District Office No. 1
210 E. Frontview, Suite A
Dodge City, KS 67801



Phone: 620-682-7933
<http://kcc.ks.gov/>

Andrew J. French, Chairperson
Dwight D. Keen, Commissioner
Annie Kuether, Commissioner

Laura Kelly, Governor

08/15/2024

Michael Reilly
Grand Mesa Operating Company
1700 N WATERFRONT PKWY BLDG 600
WICHITA, KS 67206-5514

Re: Temporary Abandonment
API 15-033-21688-00-01
CHARLIE BROWN 1-24
SE/4 Sec.24-33S-16W
Comanche County, Kansas

Dear Michael Reilly:

"Your temporary abandonment (TA) application for the well listed above has been approved. In accordance with K.A.R. 82-3-111 the TA status of this well will expire 08/15/2025.

- * If you return this well to service or plug it, please notify the District Office.
- * If you sell this well you are required to file a Transfer of Operator form, T-1.
- * If the well will remain temporarily abandoned, you must submit a new TA application, CP-111, before 08/15/2025.

You may contact me at the number above if you have questions.

Very truly yours,

Michael Maier"