

KANSAS CORPORATION COMMISSION
OIL & GAS CONSERVATION DIVISION

TEMPORARY ABANDONMENT WELL APPLICATION

OPERATOR: License#
Name:
Address 1:
Address 2:
City: State: Zip:
Contact Person:
Phone:
Contact Person Email:
Field Contact Person:
Field Contact Person Phone:

API No. 15-
Spot Description:
Sec. Twp. S. R.
GPS Location: Lat, Long
Datum: NAD27, NAD83, WGS84
County: Elevation:
Lease Name: Well #:
Well Type: Oil, Gas, OG, WSW, Other
SWD Permit #: ENHR Permit #:
Gas Storage Permit #:
Spud Date: Date Shut-In:

Table with 7 columns: Conductor, Surface, Production, Intermediate, Liner, Tubing. Rows include Size, Setting Depth, Amount of Cement, Top of Cement, Bottom of Cement.

Casing Fluid Level from Surface: How Determined? Date:
Casing Squeeze(s): to w / sacks of cement, to w / sacks of cement. Date:
Do you have a valid Oil & Gas Lease? Yes No
Depth and Type: Junk in Hole at Tools in Hole at Casing Leaks: Yes No Depth of casing leak(s):
Type Completion: ALT. I ALT. II Depth of: DV Tool: w / sacks of cement Port Collar: w / sack of cement
Packer Type: Size: Inch Set at: Feet
Total Depth: Plug Back Depth: Plug Back Method:

Geological Data:

Table with 4 columns: Formation Name, Formation Top, Formation Base, Completion Information. Rows 1 and 2.

UNDER PENALTY OF PERJURY I HEREBY ATTEST THAT THE INFORMATION CONTAINED HEREIN IS TRUE AND CORRECT TO THE BEST OF MY KNOWLEDGE

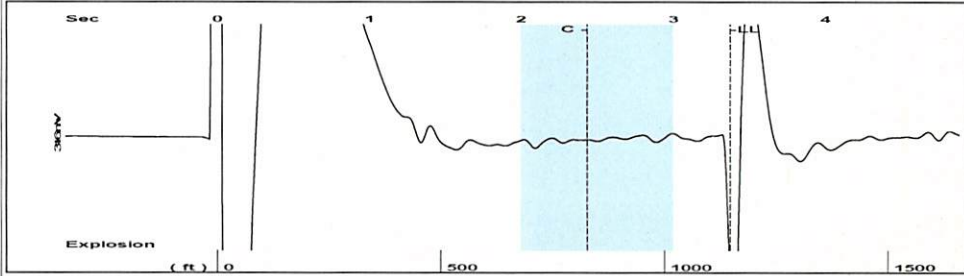
Submitted Electronically

Do NOT Write in This Space - KCC USE ONLY
Date Tested: Results: Date Plugged: Date Repaired: Date Put Back in Service:
Review Completed by: Comments:
TA Approved: Yes Denied Date:

Mail to the Appropriate KCC Conservation Office:

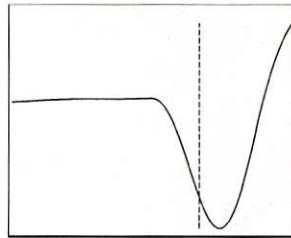
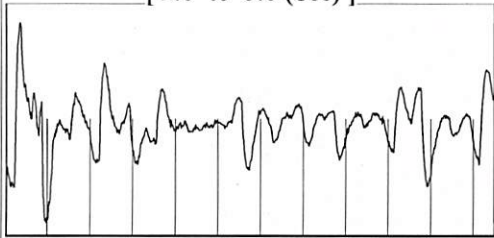
Table with 3 columns: District Office #, Address, Phone. Rows 1-4.

Group: 3G Production, LLC Well: Luders 8 (acquired on: 08/14/24 15:29:18 )



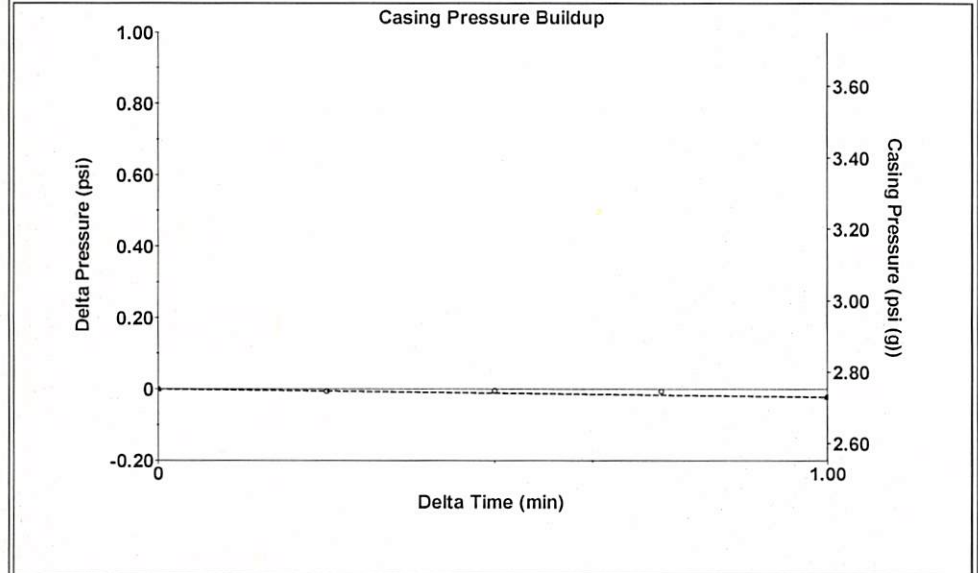
Filter Type High Pass Automatic Collar Count Yes Time 3.374 sec  
 Manual Acoustic Velo 722.919 ft/s Manual JTS/sec 11.4025 Joints 36.2017 Jts  
 Depth 1147.59 ft

[ 2.0 to 3.0 (Sec) ]



Analysis Method: Automatic

Group: 3G Production, LLC Well: Luders 8 (acquired on: 08/14/24 15:29:18 )



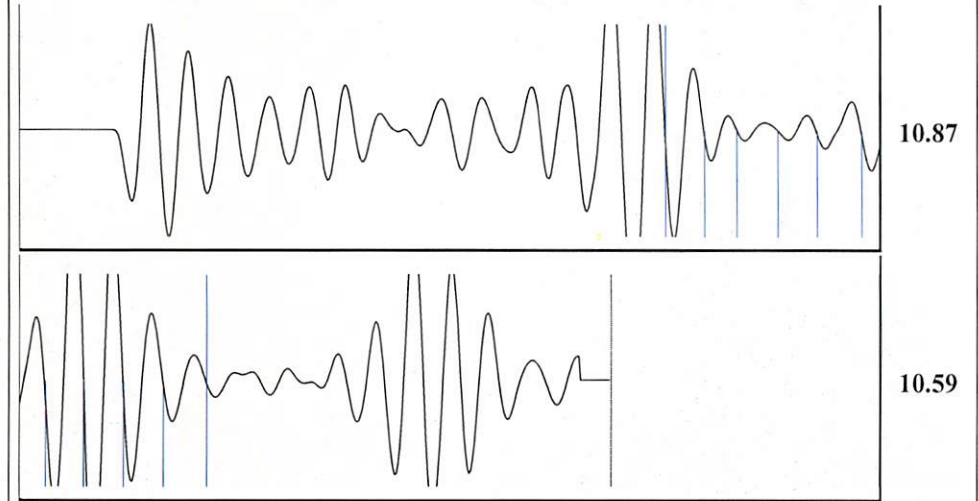
Change in Pressure -0.02 psi PT 15469  
 Change in Time 1.00 min Range 0 - ? psi

Group: 3G Production, LLC Well: Luders 8 (acquired on: 08/14/24 15:29:18 )

Production Current	Potential	Casing Pressure	Producing
Oil -*- BBL/D	-*- BBL/D	2.8 psi (g)	Annular Gas Flow 0 Mscf/D
Water -*- BBL/D	-*- BBL/D	Casing Pressure Buildup 1.00 min	% Liquid 100 %
Gas -*- Mscf/D	-*- Mscf/D	Gas/Liquid Interface Pressure 3.7 psi (g)	
IPR Method Vogel		Liquid Level Depth 1147.59 ft	
PBHP/SBHP -*-		Tubing Intake Depth 4200.00 ft	
Production Efficiency 0.0		Formation Depth 4200.00 ft	
Oil 40 deg.API		Tubing Intake 1391.4 psi (g)	
Water 1.05 Sp.Gr.H2O		Producing BHP 1391.4 psi (g)	
Gas 1.27 Sp.Gr.AIR		Static BHP -*- psi (g)	
Acoustic Velocity 680.258 ft/s			
Formation Submergence			
Total Gaseous Liquid Column HT (TVD) 3052 ft			
Equivalent Gas Free Liquid HT (TVD) 3052 ft			
Acoustic Test			



Group: 3G Production, LLC Well: Luders 8 (acquired on: 08/14/24 15:29:18 )



Acoustic Velocity 680.258 ft/s Joints counted 10  
 Joints Per Second 10.7296 jts/sec Joints to liquid level 36.2017  
 Depth to liquid level 1147.59 ft Filter Width 9.40251 13.4025  
 Automatic Collar Count Yes Time to 1st Collar 1.5 2.432

Conservation Division  
District Office No. 1  
210 E. Frontview, Suite A  
Dodge City, KS 67801



Phone: 620-682-7933  
<http://kcc.ks.gov/>

Andrew J. French, Chairperson  
Dwight D. Keen, Commissioner  
Annie Kuether, Commissioner

Laura Kelly, Governor

08/15/2024

Kenneth C Gates  
Iuka-Carmi Development LLC  
PO BOX 847  
PRATT, KS 67124-0847

Re: Temporary Abandonment  
API 15-151-22164-00-00  
LUDERS B 8  
SW/4 Sec.07-27S-12W  
Pratt County, Kansas

Dear Kenneth C Gates:

"Your temporary abandonment (TA) application for the well listed above has been approved. In accordance with K.A.R. 82-3-111 the TA status of this well will expire 08/15/2025.

- \* If you return this well to service or plug it, please notify the District Office.
- \* If you sell this well you are required to file a Transfer of Operator form, T-1.
- \* If the well will remain temporarily abandoned, you must submit a new TA application, CP-111, before 08/15/2025.

You may contact me at the number above if you have questions.

Very truly yours,

Michael Maier"