

KANSAS CORPORATION COMMISSION
OIL & GAS CONSERVATION DIVISION

TEMPORARY ABANDONMENT WELL APPLICATION

OPERATOR: License#
Name:
Address 1:
Address 2:
City: State: Zip:
Contact Person:
Phone:
Contact Person Email:
Field Contact Person:
Field Contact Person Phone:

API No. 15-
Spot Description:
Sec. Twp. S. R.
GPS Location: Lat: Long:
Datum: NAD27 NAD83 WGS84
County: Elevation:
Lease Name: Well #:
Well Type: Oil Gas OG WSW Other:
SWD Permit #: ENHR Permit #:
Gas Storage Permit #:
Spud Date: Date Shut-In:

Table with 7 columns: Conductor, Surface, Production, Intermediate, Liner, Tubing. Rows include Size, Setting Depth, Amount of Cement, Top of Cement, Bottom of Cement.

Casing Fluid Level from Surface: How Determined? Date:
Casing Squeeze(s): to w / sacks of cement, to w / sacks of cement. Date:
Do you have a valid Oil & Gas Lease? Yes No
Depth and Type: Junk in Hole at Tools in Hole at Casing Leaks: Yes No Depth of casing leak(s):
Type Completion: ALT. I ALT. II Depth of: DV Tool: w / sacks of cement Port Collar: w / sack of cement
Packer Type: Size: Inch Set at: Feet
Total Depth: Plug Back Depth: Plug Back Method:

Geological Data:

Table with 4 columns: Formation Name, Formation Top, Formation Base, Completion Information. Rows 1 and 2.

UNDER PENALTY OF PERJURY I HEREBY ATTEST THAT THE INFORMATION CONTAINED HEREIN IS TRUE AND CORRECT TO THE BEST OF MY KNOWLEDGE

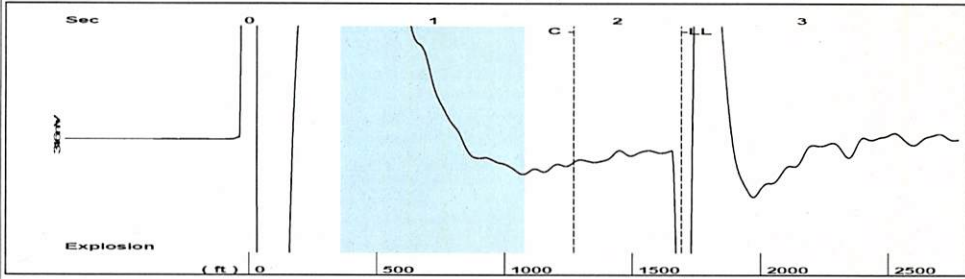
Submitted Electronically

Do NOT Write in This Space - KCC USE ONLY
Date Tested: Results: Date Plugged: Date Repaired: Date Put Back in Service:
Review Completed by: Comments:
TA Approved: Yes Denied Date:

Mail to the Appropriate KCC Conservation Office:

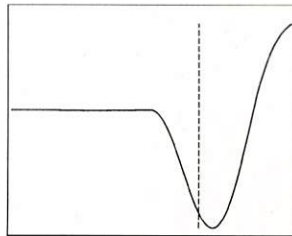
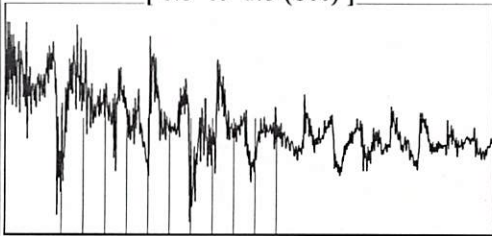
Table with 3 columns: District Office, Address, Phone. Rows 1-4.

Group: 3G Production, LLC Well: ICHU 20 (acquired on: 08/14/24 15:48:18)



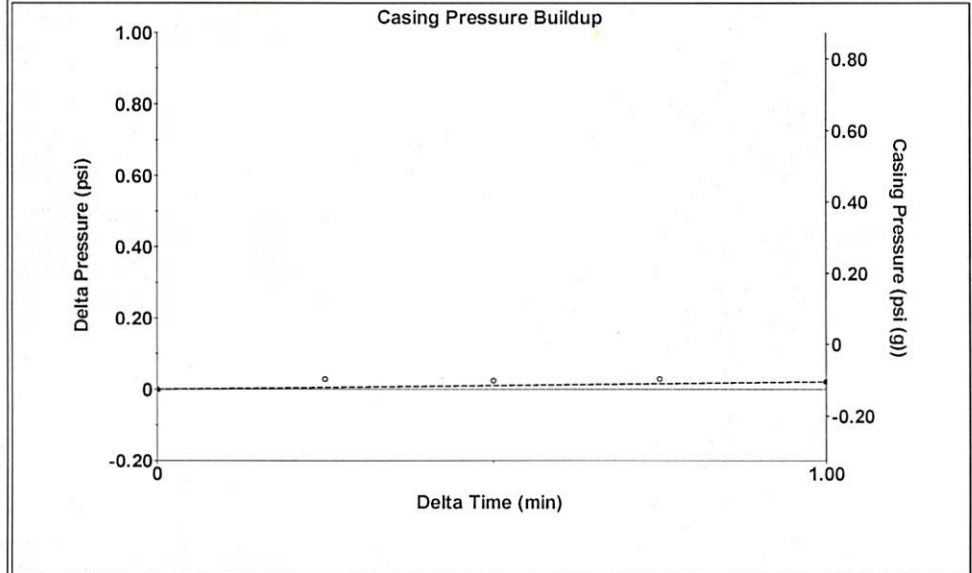
Filter Type High Pass Automatic Collar Count Yes Time 2.349 sec
 Manual Acoustic Velo 1434.39 ft/s Manual JTS/sec 22.6244 Joints 53.3864 Jts
 Depth 1692.35 ft

[0.5 to 1.5 (Sec)]



Analysis Method: Automatic

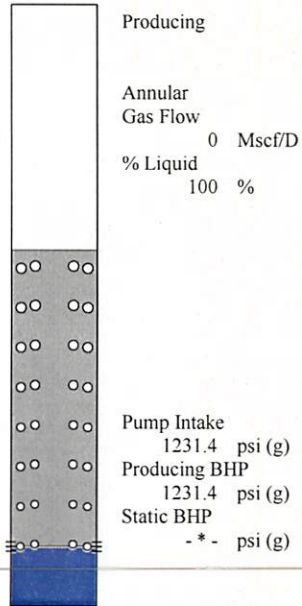
Group: 3G Production, LLC Well: ICHU 20 (acquired on: 08/14/24 15:48:18)



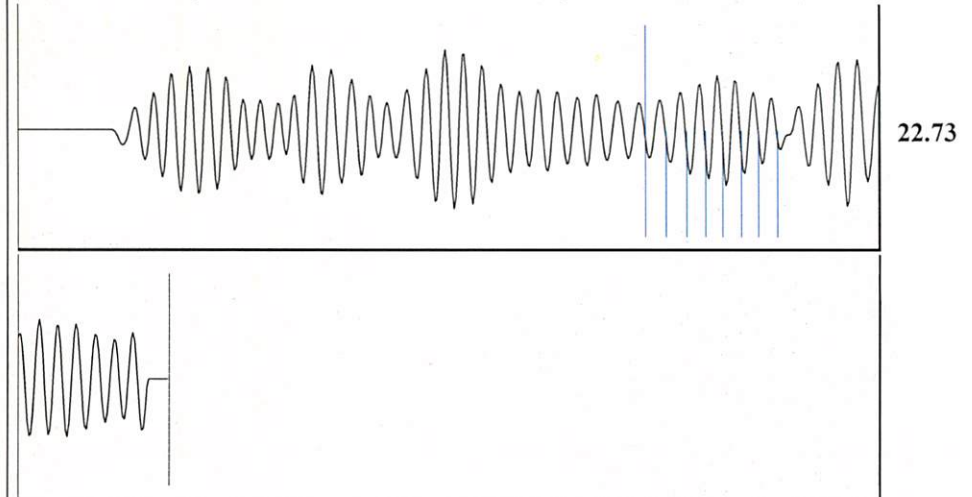
Change in Pressure 0.02 psi PT 15469
 Change in Time 1.00 min Range 0 - ? psi

Group: 3G Production, LLC Well: ICHU 20 (acquired on: 08/14/24 15:48:18)

Production	Potential	Casing Pressure
Oil -*- BBL/D	-*- BBL/D	-0.1 psi (g)
Water -*- BBL/D	-*- BBL/D	Casing Pressure Buildup
Gas -*- Mscf/D	-*- Mscf/D	0.0 psi
		1.00 min
IPR Method Vogel		Gas/Liquid Interface Pressure
PBHP/SBHP -*-		0.4 psi (g)
Production Efficiency 0.0		
		Liquid Level Depth
Oil 40 deg.API		1692.35 ft
Water 1.05 Sp.Gr.H2O		
Gas 0.58 Sp.Gr.AIR		Pump Intake Depth
		4400.00 ft
Acoustic Velocity 1440.91 ft/s		Formation Depth
		4400.00 ft
Formation Submergence		
Total Gaseous Liquid Column HT (TVD)	2708 ft	
Equivalent Gas Free Liquid HT (TVD)	2708 ft	
Acoustic Test		



Group: 3G Production, LLC Well: ICHU 20 (acquired on: 08/14/24 15:48:18)



Acoustic Velocity	1440.91 ft/s	Joints counted	7
Joints Per Second	22.7273 jts/sec	Joints to liquid level	53.3864
Depth to liquid level	1692.35 ft	Filter Width	20.6244
Automatic Collar Count	Yes	Time to 1st Collar	1.456 1.764

Conservation Division
District Office No. 1
210 E. Frontview, Suite A
Dodge City, KS 67801



Phone: 620-682-7933
<http://kcc.ks.gov/>

Andrew J. French, Chairperson
Dwight D. Keen, Commissioner
Annie Kuether, Commissioner

Laura Kelly, Governor

08/19/2024

Kenneth C Gates
Iuka-Carmi Development LLC
PO BOX 847
PRATT, KS 67124-0847

Re: Temporary Abandonment
API 15-151-10205-00-01
ICHU 20
NE/4 Sec.07-27S-12W
Pratt County, Kansas

Dear Kenneth C Gates:

"Your temporary abandonment (TA) application for the well listed above has been approved. In accordance with K.A.R. 82-3-111 the TA status of this well will expire 08/19/2025.

- * If you return this well to service or plug it, please notify the District Office.
- * If you sell this well you are required to file a Transfer of Operator form, T-1.
- * If the well will remain temporarily abandoned, you must submit a new TA application, CP-111, before 08/19/2025.

You may contact me at the number above if you have questions.

Very truly yours,

Michael Maier"