

KANSAS CORPORATION COMMISSION
OIL & GAS CONSERVATION DIVISION

TEMPORARY ABANDONMENT WELL APPLICATION

OPERATOR: License#
Name:
Address 1:
Address 2:
City: State: Zip:
Contact Person:
Phone:
Contact Person Email:
Field Contact Person:
Field Contact Person Phone:

API No. 15-
Spot Description:
Sec. Twp. S. R.
GPS Location: Lat: Long:
Datum: NAD27 NAD83 WGS84
County: Elevation:
Lease Name: Well #:
Well Type: Oil Gas OG WSW Other:
SWD Permit #: ENHR Permit #:
Gas Storage Permit #:
Spud Date: Date Shut-In:

Table with 7 columns: Conductor, Surface, Production, Intermediate, Liner, Tubing. Rows include Size, Setting Depth, Amount of Cement, Top of Cement, Bottom of Cement.

Casing Fluid Level from Surface: How Determined? Date:
Casing Squeeze(s): to w / sacks of cement, to w / sacks of cement. Date:
Do you have a valid Oil & Gas Lease? Yes No
Depth and Type: Junk in Hole at Tools in Hole at Casing Leaks: Yes No Depth of casing leak(s):
Type Completion: ALT. I ALT. II Depth of: DV Tool: w / sacks of cement Port Collar: w / sack of cement
Packer Type: Size: Inch Set at: Feet
Total Depth: Plug Back Depth: Plug Back Method:

Geological Data:

Table with 4 columns: Formation Name, Formation Top, Formation Base, Completion Information. Rows 1 and 2.

UNDER PENALTY OF PERJURY I HEREBY ATTEST THAT THE INFORMATION CONTAINED HEREIN IS TRUE AND CORRECT TO THE BEST OF MY KNOWLEDGE

Submitted Electronically

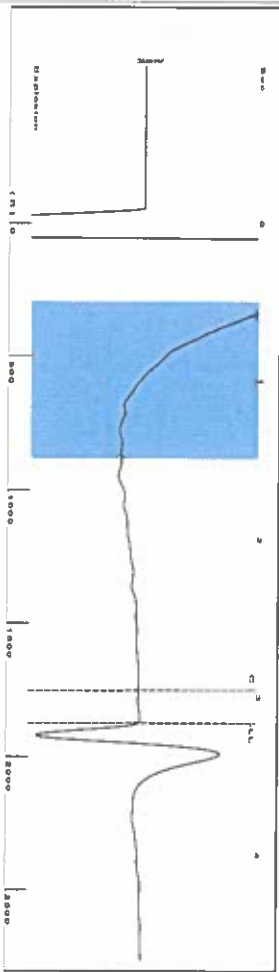
Do NOT Write in This Space - KCC USE ONLY
Date Tested: Results: Date Plugged: Date Repaired: Date Put Back in Service:
Review Completed by: Comments:
TA Approved: Yes Denied Date:

Mail to the Appropriate KCC Conservation Office:

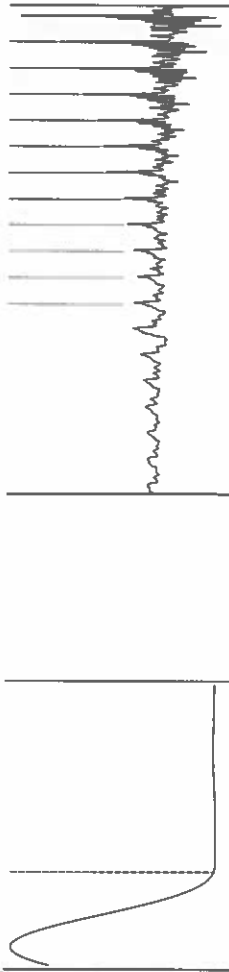
Table with 3 columns: District Office, Address, Phone. Rows for District Office #1, #2, #3, #4.

Slot @ 200' JTK

Group: Liberal Wells Well: Liberal 6 (acquired on: 08/20/24 08:34:53)



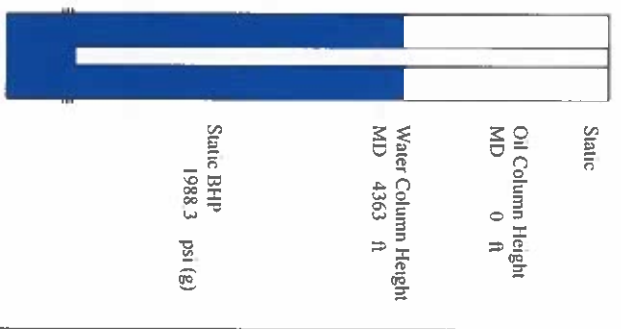
Filter Type High Pass  
 Manual Acoustic Velocity 176.25 f/s  
 Automatic Collar Count Yes  
 Manual JTS/sec 18.5529  
 Time 3.164 sec  
 Joints 59.1181 J/s  
 Depth 1874.04 ft



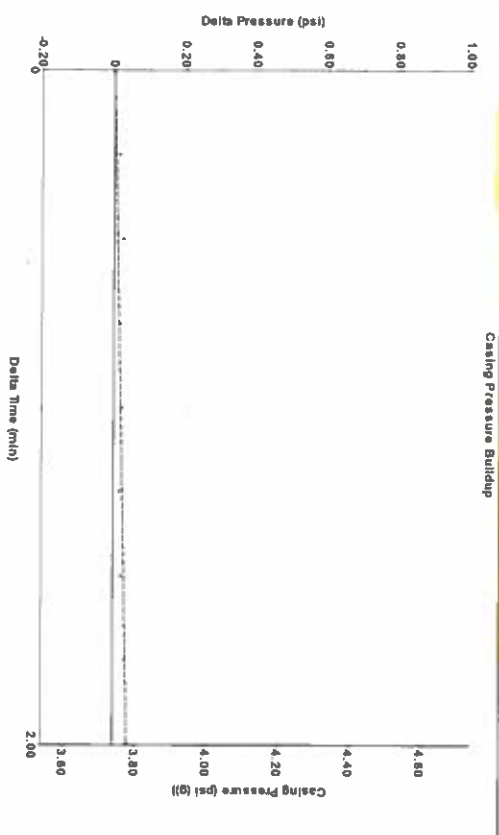
Analysis Method: Automatic

Group: Liberal Wells Well: Liberal 6 (acquired on: 08/20/24 08:34:53)

Production	Potential	Casing Pressure	Static
Current	-*- BBL/D	3.7 psi (g)	Oil Column Height
Water	-*- BBL/D	Casing Pressure Buildup	MD 0 ft
Gas	-*- Misc/D	0.0 psi	Water Column Height
IPR Method	Vogel	2.00 min	MD 4363 ft
PBHP/SBHP	-*-	Gas/Liquid Interface Pressure	
Production Efficiency	0.0	4.7 psi (g)	
Oil	37 deg API	Liquid Level Depth	
Water	1.05 Sp.Gr:H2O	1874.04 ft	
Gas	0.79 Sp.Gr:AIR	Pump Intake Depth	
Acoustic Velocity	1184.6 f/s	6160.00 ft	
		Formation Depth	
		6250.00 ft	

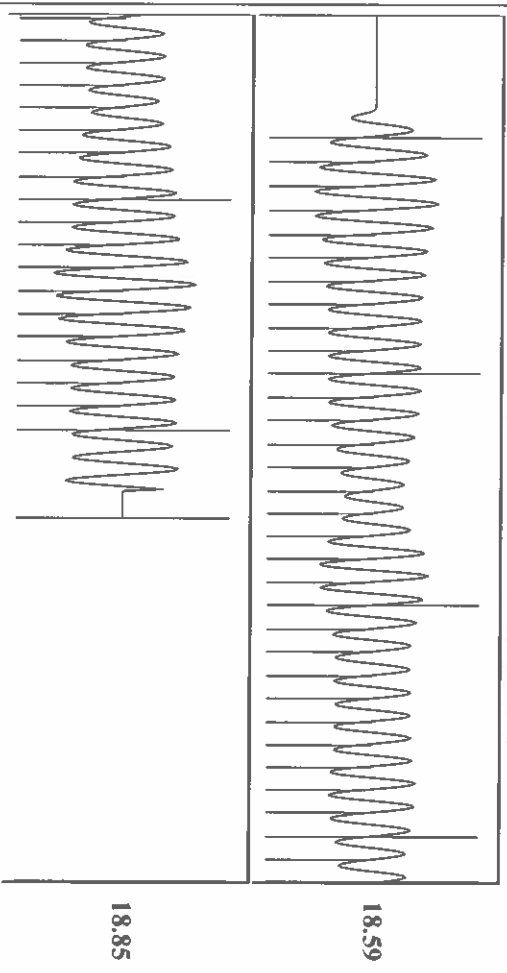


Group: Liberal Wells Well: Liberal 6 (acquired on: 08/20/24 08:34:53)



Change in Pressure 0.04 psi  
 Change in Time 2.00 min  
 P111249 Range  
 0 - 7 psi

Group: Liberal Wells Well: Liberal 6 (acquired on: 08/20/24 08:34:53)



Acoustic Velocity 1184.6 f/s  
 Joints Per Second 18.6846 JTS/sec  
 Depth to liquid level 1874.04 ft  
 Automatic Collar Count Yes

Joints counted 50  
 Joints to liquid level 59.1181  
 Filler Width 16.5529  
 Time to 1st Collar 0.284

08/22/2024

IdaniaMedina  
Merit Energy Company, LLC  
13727 NOEL ROAD, SUITE 1200  
DALLAS, TX 75240-7362

Re: Temporary Abandonment  
API 15-175-20545-00-00  
LIBERAL AIRPORT 6  
NW/4 Sec.36-34S-34W  
Seward County, Kansas

Dear IdaniaMedina:

"Your temporary abandonment (TA) application for the well listed above has been approved. In accordance with K.A.R. 82-3-111 the TA status of this well will expire 08/22/2025.

- \* If you return this well to service or plug it, please notify the District Office.
- \* If you sell this well you are required to file a Transfer of Operator form, T-1.
- \* If the well will remain temporarily abandoned, you must submit a new TA application, CP-111, before 08/22/2025.

You may contact me at the number above if you have questions.

Very truly yours,

Michael Maier"