

KANSAS CORPORATION COMMISSION
OIL & GAS CONSERVATION DIVISION

TEMPORARY ABANDONMENT WELL APPLICATION

OPERATOR: License#
Name:
Address 1:
Address 2:
City: State: Zip:
Contact Person:
Phone:
Contact Person Email:
Field Contact Person:
Field Contact Person Phone:

API No. 15-
Spot Description:
Sec. Twp. S. R.
feet from N / S Line of Section
feet from E / W Line of Section
GPS Location: Lat: , Long:
Datum: NAD27 NAD83 WGS84
County: Elevation: GL KB
Lease Name: Well #:
Well Type: (check one) Oil Gas OG WSW Other:
SWD Permit #: ENHR Permit #:
Gas Storage Permit #:
Spud Date: Date Shut-In:

Table with 7 columns: Conductor, Surface, Production, Intermediate, Liner, Tubing. Rows include Size, Setting Depth, Amount of Cement, Top of Cement, Bottom of Cement.

Casing Fluid Level from Surface: How Determined? Date:
Casing Squeeze(s): to w / sacks of cement, to w / sacks of cement. Date:
Do you have a valid Oil & Gas Lease? Yes No
Depth and Type: Junk in Hole at Tools in Hole at Casing Leaks: Yes No Depth of casing leak(s):
Type Completion: ALT. I ALT. II Depth of: DV Tool: w / sacks of cement Port Collar: w / sack of cement
Packer Type: Size: Inch Set at: Feet
Total Depth: Plug Back Depth: Plug Back Method:

Geological Date:

Table with 4 columns: Formation Name, Formation Top, Formation Base, Completion Information. Rows 1 and 2.

UNDER PENALTY OF PERJURY I HEREBY ATTEST THAT THE INFORMATION CONTAINED HEREIN IS TRUE AND CORRECT TO THE BEST OF MY KNOWLEDGE

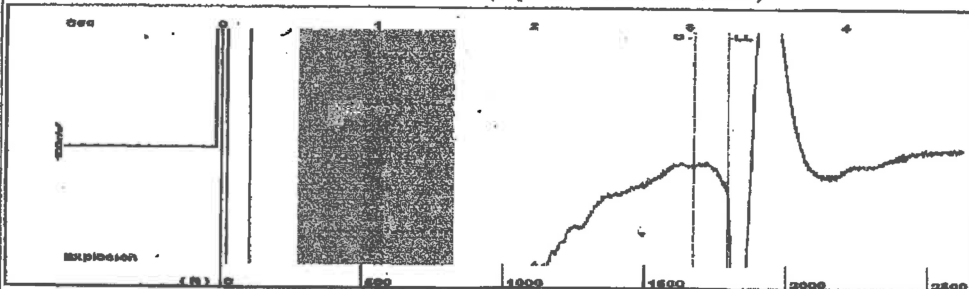
Submitted Electronically

Do NOT Write in This Space - KCC USE ONLY
Date Tested: Results: Date Plugged: Date Repaired: Date Put Back in Service:
Review Completed by: Comments:
TA Approved: Yes Denied Date:

Mail to the Appropriate KCC Conservation Office:

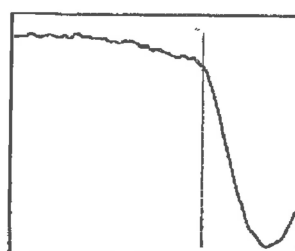
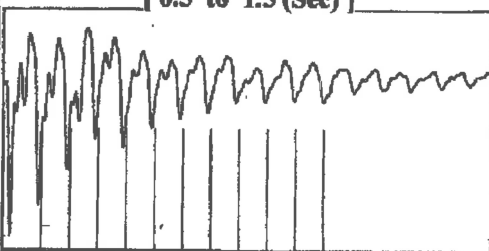
Table with 3 columns: District Office, Address, Phone. Rows for District Office #1, #2, #3, #4.

Group: Belpre Well: Schartz 1-12 (acquired on: 03/07/23 12:30:09)



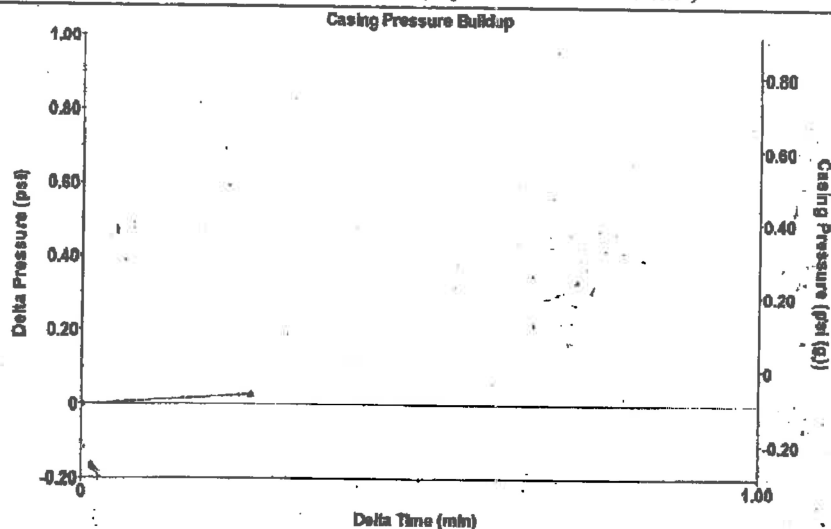
Filter Type High Pass Automatic Collar Count Yes Time 3.25 sec  
 Manual Acoustic Velo 1098.79 ft/s Manual JTS/sec 17.331 Joints 56.5217 Jts  
 Depth 1791.74 ft

[ 0.5 to 1.5 (Sec) ]



Analysis Method: Automatic

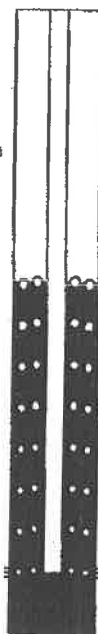
Group: Belpre Well: Schartz 1-12 (acquired on: 03/07/23 12:30:09)



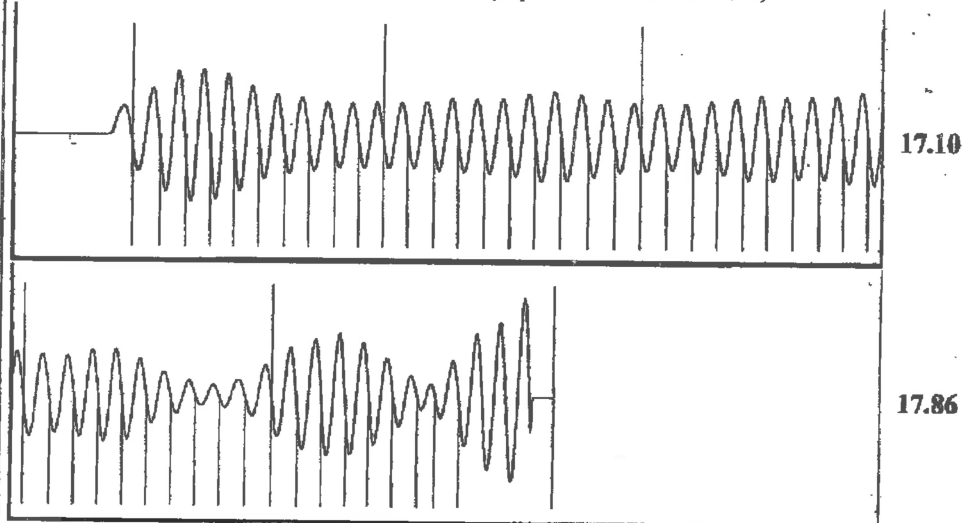
Change in Pressure 0.03 psi PT13440  
 Change in Time 0.25 min Range -0.2 - 1.0 psi

Group: Belpre Well: Schartz 1-12 (acquired on: 03/07/23 12:30:09)

<b>Production</b>	<b>Potential</b>	<b>Casing Pressure</b>	<b>Producing</b>
Current		-0.1 psi (g)	
Oil - * -	- * - BBL/D	Casing Pressure Buildup	Annular Gas Flow
Water - * -	- * - BBL/D	0.027 psi	1 Mscf/D
Gas - * -	- * - Mscf/D	0.25 min	% Liquid
		Gas/Liquid Interface Pressure	91 %
		0.7 psi (g)	
<b>IPR Method</b>	<b>Vogel</b>	<b>Liquid Level Depth</b>	
PBHP/SBHP	- * -	1791.74 ft	
Production Efficiency	0.0	<b>Pump Intake Depth</b>	
		4275.00 ft	
Oil 40 deg.API		<b>Formation Depth</b>	
Water 1.05 Sp.Gr.H2O		4272.00 ft	
Gas 0.87 Sp.Gr.AIR			
<b>Acoustic Velocity</b>	<b>1102.61 ft/s</b>		
		<b>Pump Intake</b>	
		756.4 psi (g)	
		<b>Producing BHP</b>	
		755.5 psi (g)	
		<b>Static BHP</b>	
		- * - psi (g)	
<b>Formation Submergence</b>			
Total Gaseous Liquid Column HT (TVD)	2483 ft		
Equivalent Gas Free Liquid HT (TVD)	2271 ft		
<b>Acoustic Test</b>			



Group: Belpre Well: Schartz 1-12 (acquired on: 03/07/23 12:30:09)



Acoustic Velocity 1102.61 ft/s Joints counted 48  
 Joints Per Second 17.3913 jts/sec Joints to liquid level 56.5217  
 Depth to liquid level 1791.74 ft Filter Widths 15.331 19.331  
 Automatic Collar Count Yes Time to 1st Collar 0.272 3.032

Conservation Division  
District Office No. 1  
210 E. Frontview, Suite A  
Dodge City, KS 67801



Phone: 620-682-7933  
<http://kcc.ks.gov/>

Andrew J. French, Chairperson  
Dwight D. Keen, Commissioner  
Annie Kuether, Commissioner

Laura Kelly, Governor

08/22/2024

Loveness Mpanje  
F. G. Holl Company L.L.C.  
9431 E CENTRAL STE 100  
WICHITA, KS 67206-2563

Re: Temporary Abandonment  
API 15-047-20522-00-00  
SCHARTZ 1-12  
SW/4 Sec.12-24S-17W  
Edwards County, Kansas

Dear Loveness Mpanje:

Your application for Temporary Abandonment (TA) for the above-listed well is denied for the following reasons(s):

**Shut-in Over 10 years**

Pursuant to K.A.R. 82-3-111, the well must be plugged, or returned to service, or obtain temporary abandonment status by 09/21/2024.

**This deadline does NOT override any compliance deadline given to you in any Commission Order.**

You may contact me if you have any questions.

Sincerely,  
Michael Maier  
KCC DISTRICT 1